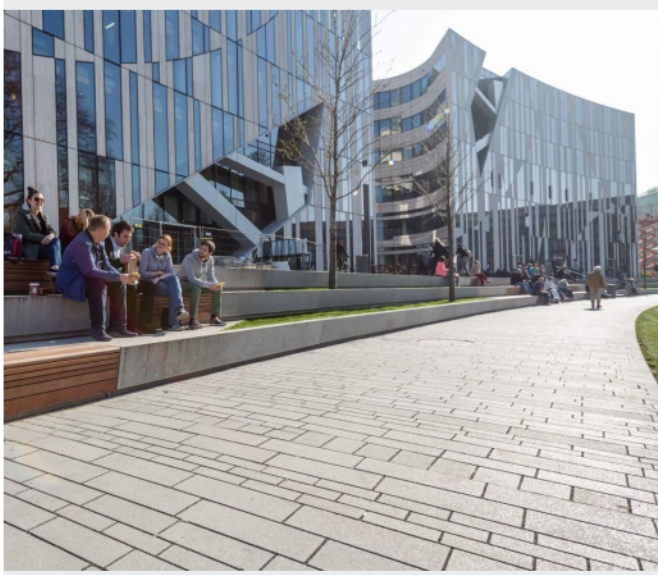


## Measurements

- ✓ Mixed size pavers:
- ✓ 64x16x8 cm - 175 kg/m<sup>2</sup>
- ✓ 48x16x8 cm - 175 kg/m<sup>2</sup>
- ✓ 48x12x8 cm - 175 kg/m<sup>2</sup>
- ✓ 36x12x8 cm - 175 kg/m<sup>2</sup>
- ✓ 28x12x8 cm - 175 kg/m<sup>2</sup>
- ✓ 64x16x12 cm - 265 kg/m<sup>2</sup>
- ✓ 48x16x12 cm - 265 kg/m<sup>2</sup>
- ✓ 48x12x12 cm - 265 kg/m<sup>2</sup>
- ✓ 36x12x12 cm - 265 kg/m<sup>2</sup>
- ✓ 28x12x12 cm - 265 kg/m<sup>2</sup>

CASADO opens up new perspectives for the design of paths and public spaces. Extra-long sizes provide the appearance of a well-designed floor. CASADO multi-size pavers can be installed in a multiple gauged width layout thanks to the 4 matched lengths and 2 different widths. The CASADO range is available in thickness of 8 or 12 cm and combine ideally with large-size SCADA...



48/16		64/16	
36/12	48/12	28/12	
64/16		48/16	
28/12	48/12	36/12	
48/16		64/16	
36/12	48/12	28/12	

## Colours and Finishings

- ✓ FINO
- ✓ PUR

## Handling



## Accessibility