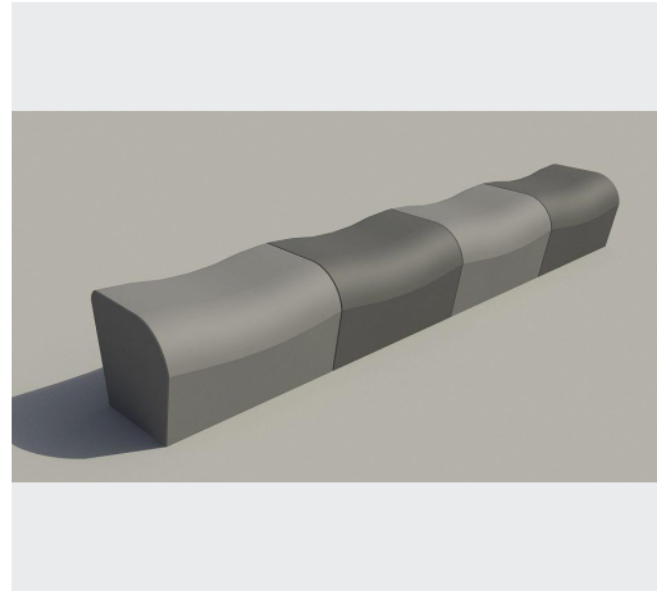


Seat Curva



Anchoring

- ✓ Free standing

Measurements

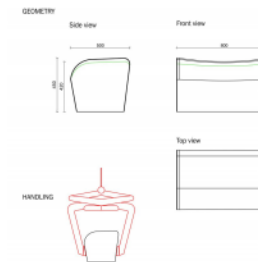
- ✓ 80x50x45 cm - 360 kg

Dented round seat Curva The Curva seating block in architectural concrete has a strongly rounded front and flat back. The upper surface is also rounded and has a dent so that a pleasant seating comfort is created. The seat can be placed separately as a design element or next to each other to create a long board. The curva seat block is available in our 3 finishes Ferro, Fino and Finerro...

Colours and Finishings

- ✓ FERRO
- ✓ FINO
- ✓ FINERRO

Handling



Accessibility

