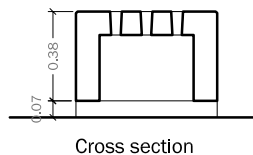
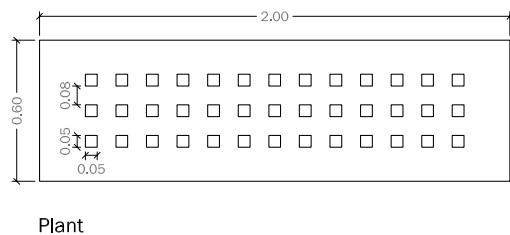
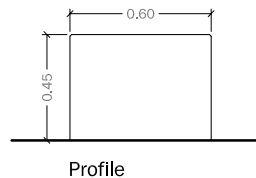
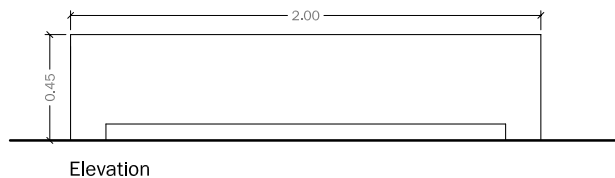
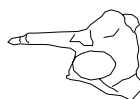
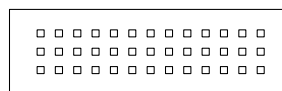
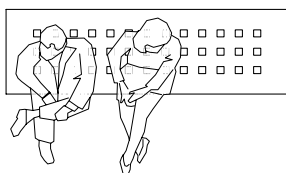
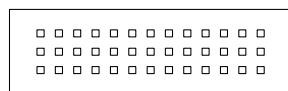


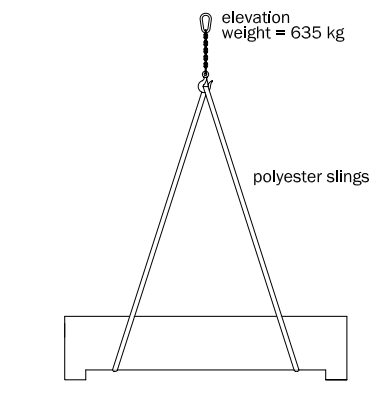
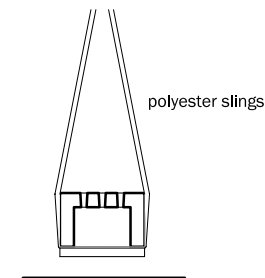
GEOMETRY



scale (in cm.) 0 50



POSITIONING



Fastening system
Base supported

BALI

Its "hollow structure" contrasts with the sensation of a "solid block" which is highlighted by its geometry. The design involves conical perforations in the seat base, showing a cavity suspended only by its two side supports in the interior.

patented model ©



MATERIAL : Architectural concrete
COLOUR : Beige, Grey, Black
TEXTURE : Stripped, Mixt plain-stripped
FINISH : Water repellent
WEIGHT : 635 Kg
INSTALLATION : Base supported
DESIGN : Internal team

