

Bootle Station– U Frame Stiffened Pratt Truss



Details

Client: Kier Construction Ltd-

Location: Bootle Oriel Station, Merseyside

Length: 27m

Width 2.45m

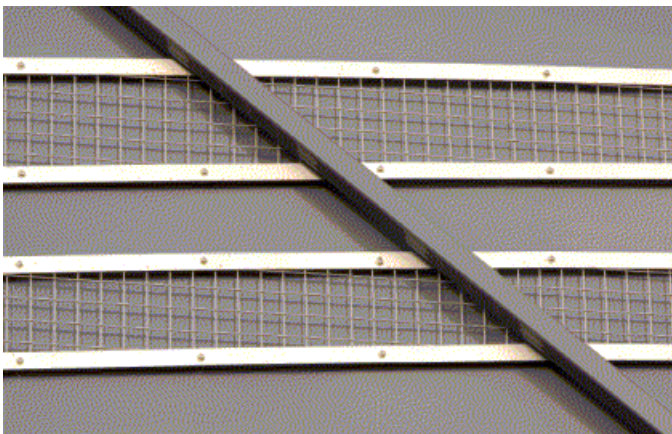
Form: U frame stiffened Pratt truss



Project Description

A steel truss railway footbridge with stepped access, designed, manufactured and installed at Bootle Oriel Station. Installation took place during a weekend, night time rail closure. The solid panel sides of the bridge had stainless steel feature panels and provision for lighting and service ducts down each side.

Many bridges need ramped or stair access to the main bridge span. The footbridge over the railway at Oriel Railway Station required steps at both sides. CTS can offer tailored solutions to meet the client requirements and deliver the complete superstructure package.



For further details please contact CTS Bridges

Tel: 01484 606416

email: enquiries@ctsbridges.co.uk

web: www.ctsbridges.co.uk