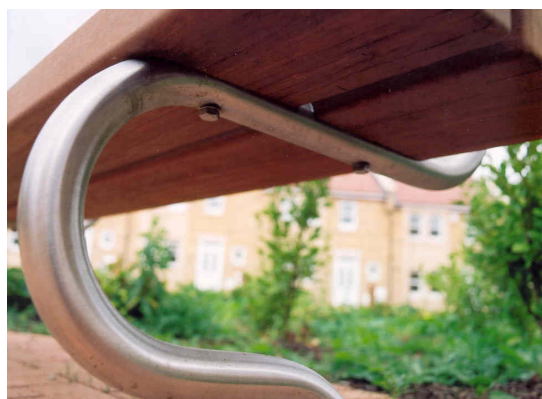


EXCEL SEAT

PRODUCT SPECIFICATION



- The Excel Seat is made from high quality Naturally Very Durable Hardwood and Stainless Steel. The simple, natural appearance and robust construction means this seat is perfect for a range of external spaces and landscapes.
- Supplied in one standard length of 1800mm, however custom lengths are available upon request.
- Seat width is 400mm (overall width including backrest 600mm) x 450mm high above ground level however custom seating heights are available upon request.
- The Excel Seat is available in a straight configuration.
- Supplied fully assembled with a choice of surface fixed (SF) or built-in 200mm (BI) below ground.
- Seats slats are 190mm wide x 90mm thick.
- Single and double backrests are available.
- Available with Stainless Steel armrests.
- A Stainless Steel 'trickstoppa' can be factory or retro-fitted to seating to deter skateboarders.
- To specify use product code EXCEL SEAT length, fixing, backrest, armrests.
- Available in FSC Certified Hardwood.



scan for the
woodscape
website



The mark of
responsible forestry

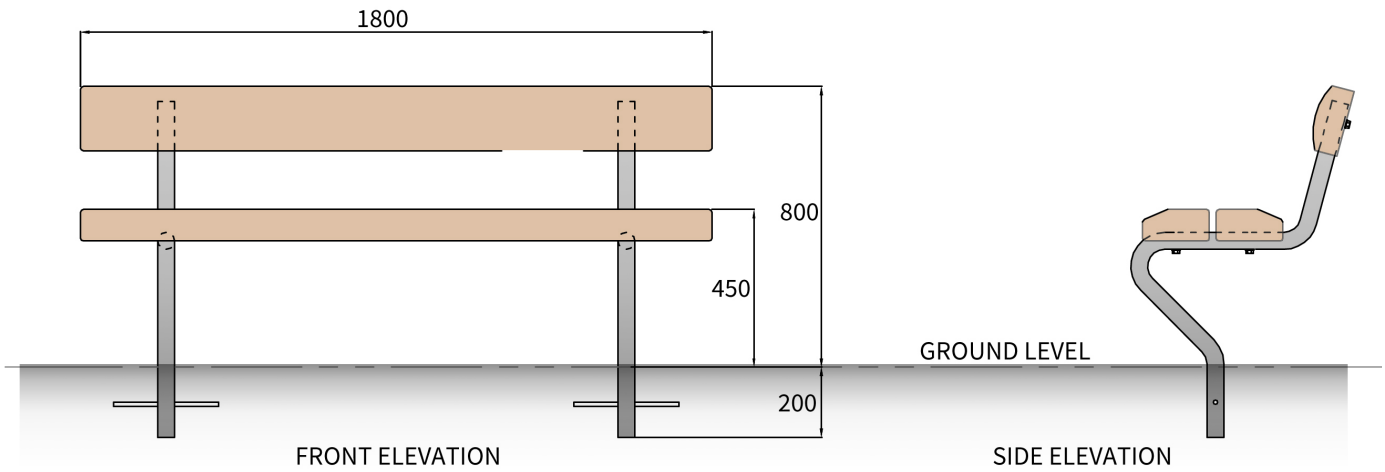
Woodscape products are manufactured from Naturally Very Durable Hardwoods, sourced from sustainable forests, as standard. As an FSC® certified supplier we can manufacture our products using FSC certified timber as required.

EXCEL SEAT

PRODUCT SPECIFICATION

Technical Data: Typical Excel Seat 1800mm, built-in below ground 200mm

Please contact Woodscape for standard or bespoke detailed customer drawings.



LENGTH	WIDTH	HEIGHT	SHAPE	FIXING	BACKREST	ARMRESTS
1800mm	400mm	450mm	straight	surface-fixed	single	single
2000mm				built-in	double	double
custom						