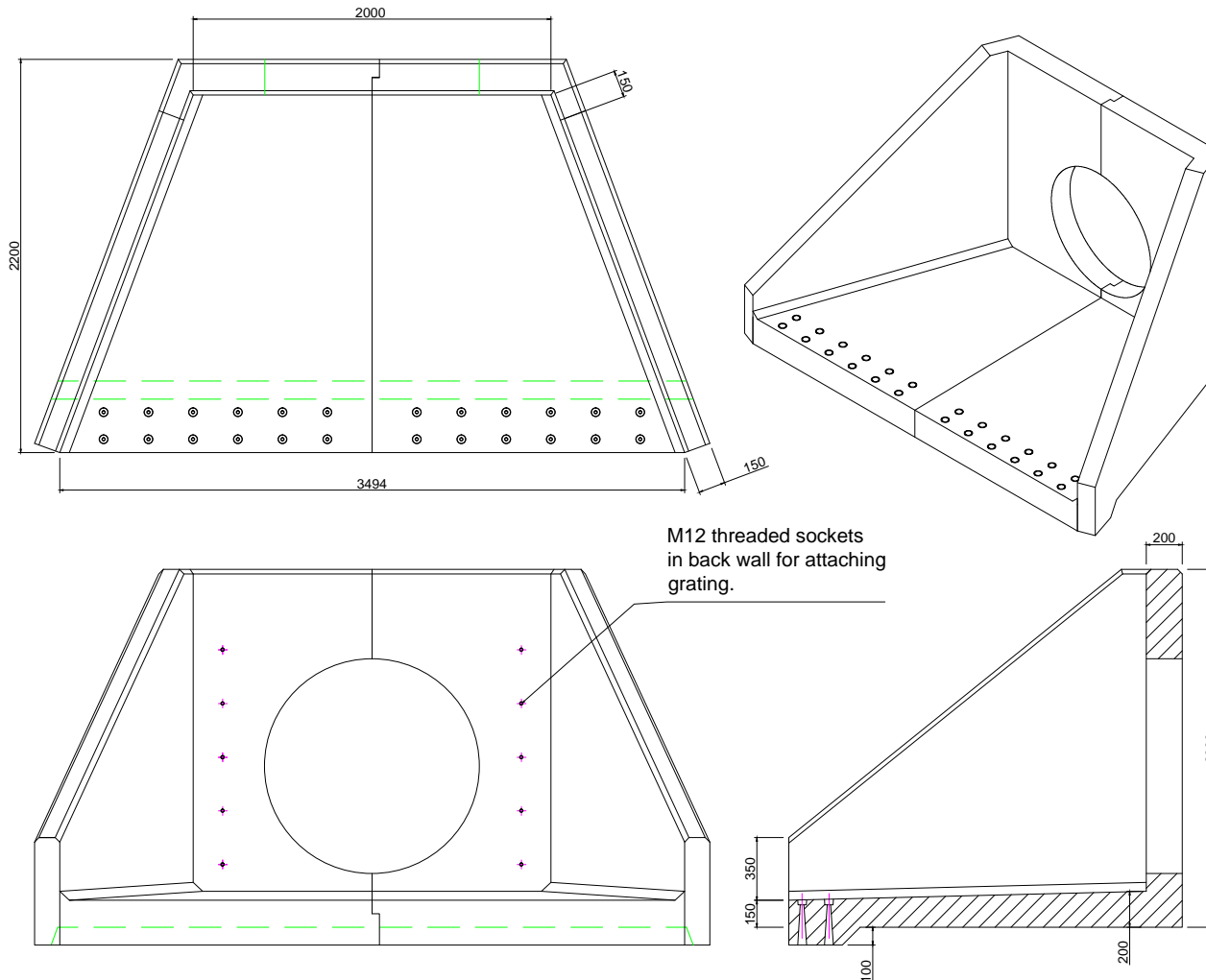


SFA20C Specification Information

- Opening in back wall cast to suit outside diameter of the pipework
- Invert level of pipe can be set to your specification
- There is a 50mm fall from the back wall of the headwall to the front of the spillway
- SFA20C suitable for pipework up to 1050mm ID Twin wall or Clay and 1050mm ID Concrete with Sewers for Adoption compliant grating, or up to 1200mm ID Twin wall or Clay and 1200mm ID Concrete without Sewers for Adoption compliant grating



Althon SFA20C Headwall Installation

Units should be bedded on minimum 100mm of semi-dry concrete.
 Material: Reinforced concrete
 Weight approximately 6730kg
 All dimensions in mm