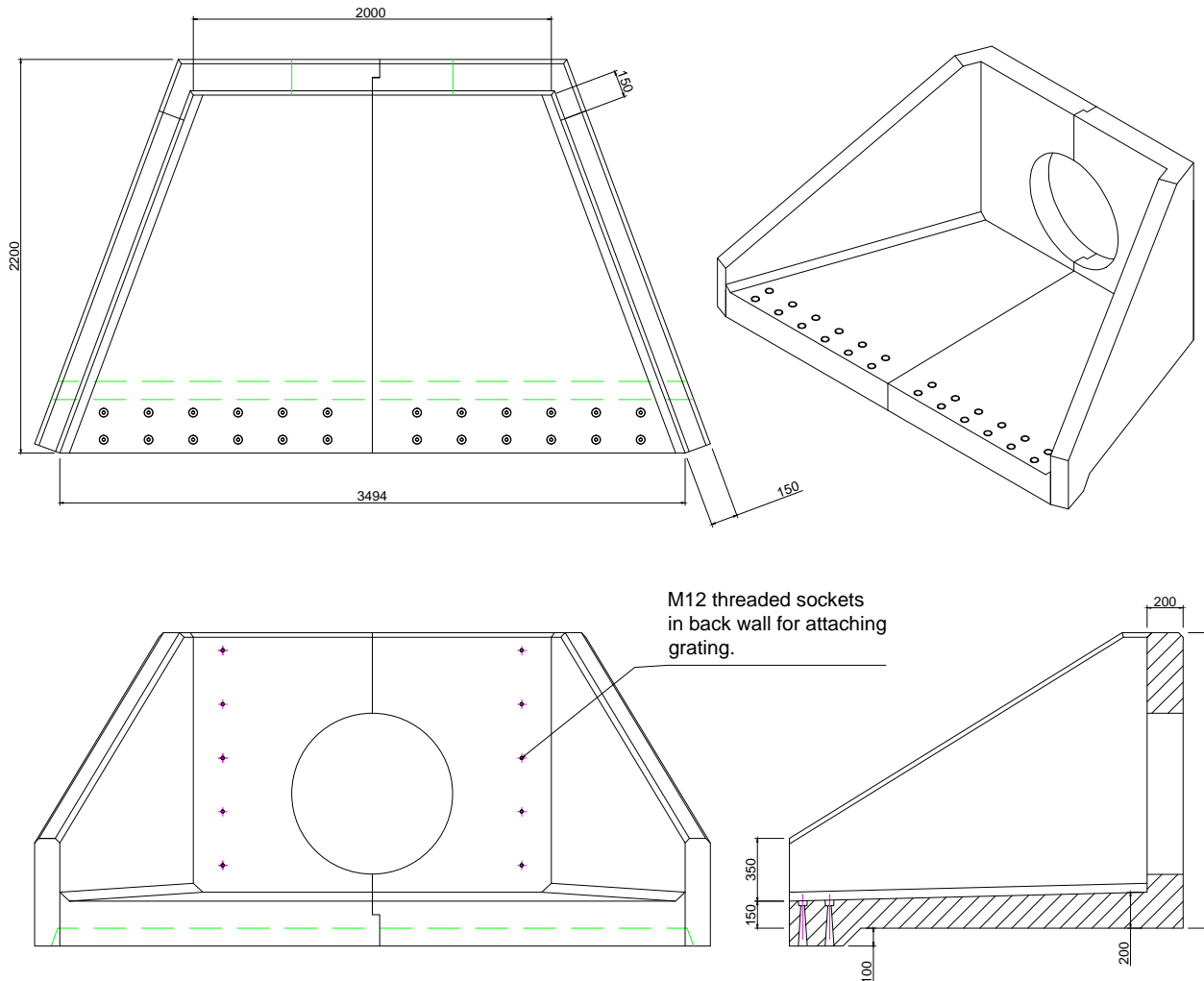


## ALTHON SFA20B HEADWALL

### SFA20B Specification Information

- Opening in back wall cast to suit outside diameter of the pipework
- Invert level of pipe can be set to your specification
- There is a 50mm fall from the back wall of the headwall to the front of the spillway
- SFA20B suitable for pipework up to 900mm ID Twin wall or Clay and 900mm ID Concrete with Sewers for Adoption compliant grating, or up to 900mm ID Twin wall or Clay and 900mm ID Concrete without Sewers for Adoption compliant grating



### Althon SFA20B Headwall Installation

Units should be bedded on minimum 100mm of semi-dry concrete.  
 For full detailed installation instructions contact Althon Ltd,  
 01603 488700  
 Material: Reinforced concrete  
 Weight approximately 6070kg  
 All dimensions in mm