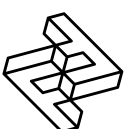


FACTORY FURNITURE

Cubit Planters

OPERATION & MAINTENANCE MANUAL



Introduction

Design

Design, shop drawings and development by Factory Furniture Ltd.

Manufacture

Factory Furniture manufactured components. Products are assembled in Factory workshops, checked and dispatched ready for installation. Replacement products or components thereof should be ordered direct from Factory Furniture Ltd.

Copyright

The design copyright for the product and drawing copyright remains the sole property of Factory Furniture Ltd.

General Specifications

Example configurations

0.7 x 0.5 x 0.45 / 0.9m Folded Planter

Metric length 710mm | width 500mm | height 450 or 900mm

Imperial length 2' 4" | width 1' 7½" | height 1' 5½" or 2' 11½"

Fixing Centres 450mm (1' 5½") x 350mm (1' 2")

Approx Weight 49kg (450mm) or 89kg (900mm)

Planter Capacity 140ltr (450mm) or 295ltr (900mm)

0.7 x 0.5 x 0.45 / 0.9m Stepped Planter

Metric length 710mm | width 500mm | height 450 or 900mm

Imperial length 2' 4" | width 1' 7½" | height 1' 5½" or 2' 11½"

Fixing Centres 450mm (1' 5½") x 270mm (10½")

Approx Weight 51kg (450mm) or 88kg (900mm)

Planter Capacity 130ltr (450mm) or 285ltr (900mm)

Ø1.5 x 0.45 / 0.9m Curved Planter

Metric length 1500mm | width 1500mm | height 450 or 900mm

Imperial length 4' 11" | width 4' 11" | height 1' 5½" or 2' 11½"

Fixing Centres 1270mm (4' 2") x 1270mm (4' 2")

Approx Weight 96kg (450mm) or 170kg (900mm)

Planter Capacity 690ltr (450mm) or 1475ltr (900mm)

Detailed Material & Finish Specifications

Planter Wall Modules

- Planter wall modules manufactured from lasercut Corten steel sheet (*all welded construction*). A mild steel option is available.
- Corten steel assemblies are left untreated. Mild steel assemblies are hot dip galvanised and polyester powder coated (*colour grey as standard or to customer specification*).
- Assemblies are bolted together using M10 bolts and locknuts to form planter.

General Maintenance

(Recommended Schedule & Guidelines)

Daily/Weekly/Monthly (or as adopted)

Visual checks of planter - check over for superficial or physical damage.

Three Monthly

Clean all items as detailed below check all fixings are seated correctly.

Six Monthly

Secure all fixings; full clean as detailed below.

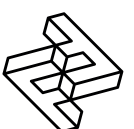
Specific Maintenance Details

Corten Steel

Clean as required (but at least every three months) with warm soapy water.

Polyester Powder Coated & Galvanised

For general cleaning using a damp cloth and warm soapy water only. Scourers and abrasive cleaners are NOT suitable for this type of finish and may damage it. Before using any cleaning agents to remove graffiti etc. try on a small, inconspicuous area first to avoid causing more unsightly damage.



Repairs

Corten Steel

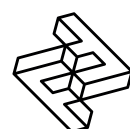
There is no need to repair light damage (scratches, chips etc.) to the rust coloured layer on the surface of the Corten steel. This layer will naturally reform within a short period of time in an external environment.

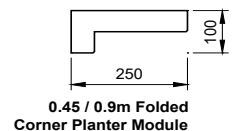
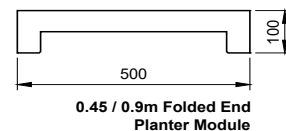
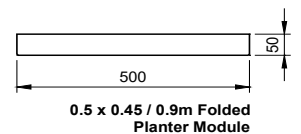
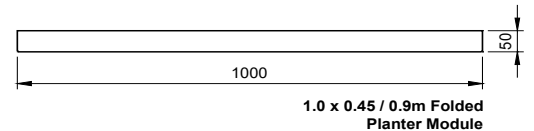
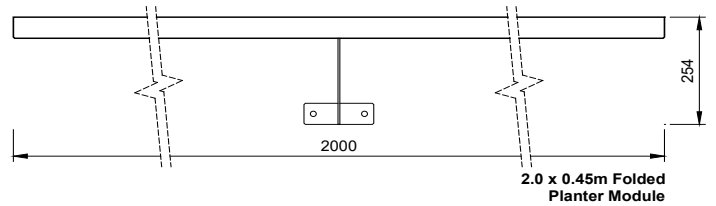
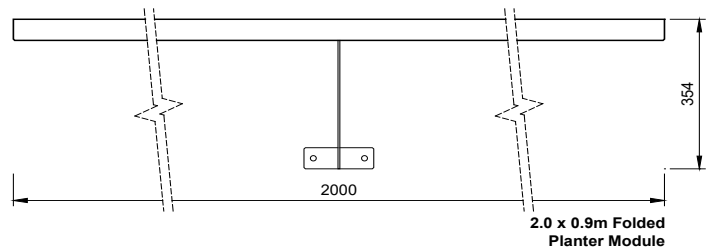
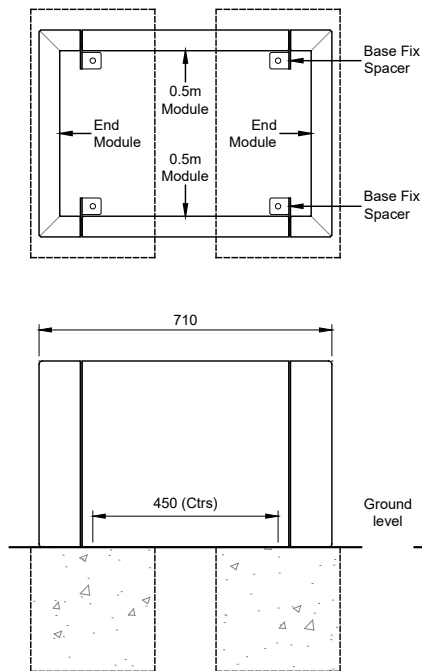
Polyester Powder Coated & Galvanised Surfaces

For light damage (scratches, chips etc.) repair using touch-up paint to match original colour (available from Factory Furniture Ltd). Paint application should be carried out in accordance with approved methods detailed by the paint manufacturer. Please note that it is advisable to use professional painters to achieve best results when touching up larger areas. Products for respraying larger areas are available from Factory Furniture Ltd.

Heavy Damage

In the event of serious damage to any component, replacements should be ordered from Factory Furniture Ltd. In this event (or if the product needs to be disassembled for any reason), please contact Factory Furniture for detailed technical advice.





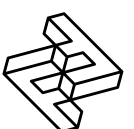
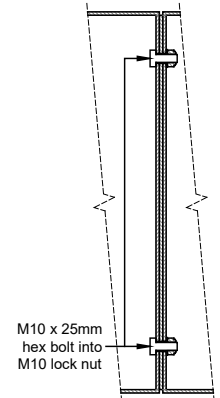
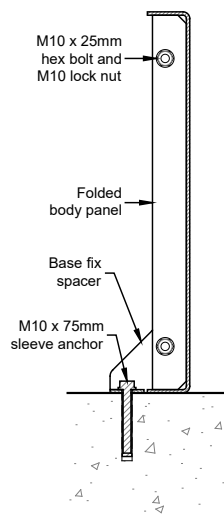
Installation Instructions

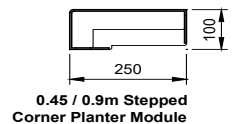
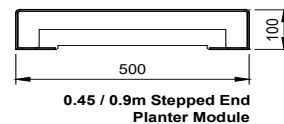
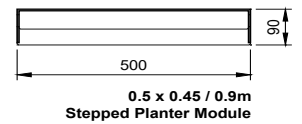
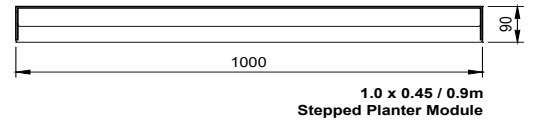
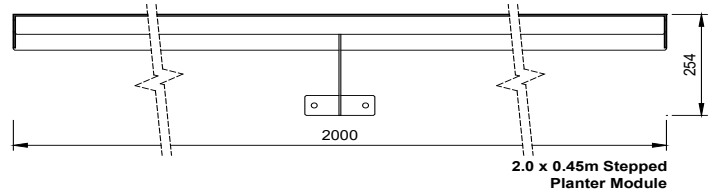
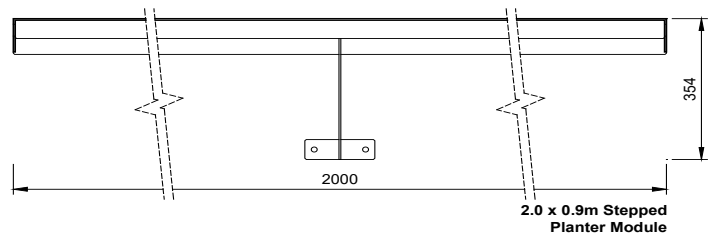
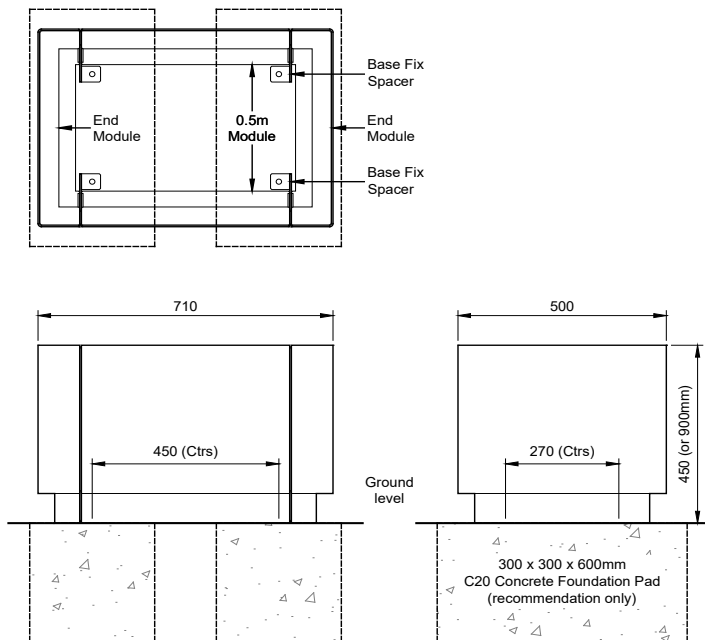
All installation works to be carried out by competent personnel - install as complete unit.

0.7 x 0.5m Folded Planter (example only)

Cubit Planter (Folded)

1. If necessary assemble planter using wall modules, spacers and M10 bolts and nuts provided.
2. Install suitable foundation pads (see illustration or to suit planter for larger planter assemblies) with top face at ground level.
3. Position planter in correct orientation with planter central on foundation pads.
4. Mark hole positions through base.
5. Remove the planter; drill holes $\text{\O}12\text{mm} \times 90\text{mm}$ deep (or as bolt manufacturer's recommendations)
6. Clear debris from holes.
7. Reposition planter and fix to foundation pads using zinc-coated M10 x 75mm sleeve anchors tightened to 50Nm (or as per manufacturer's instruction).
8. Check level and reinstate ground if necessary





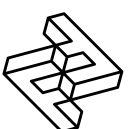
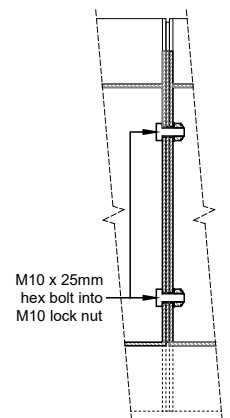
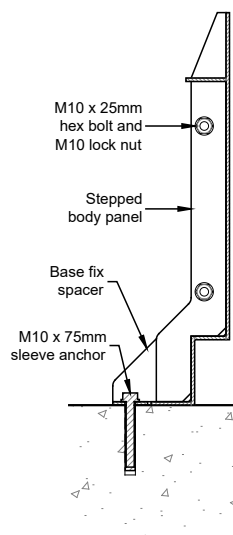
Installation Instructions

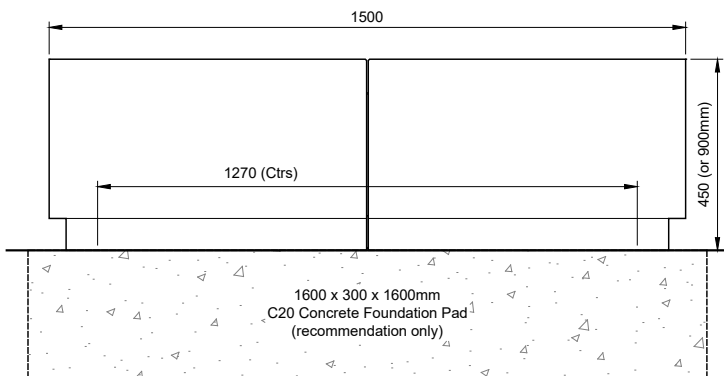
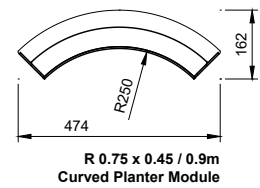
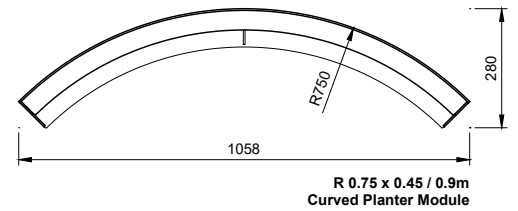
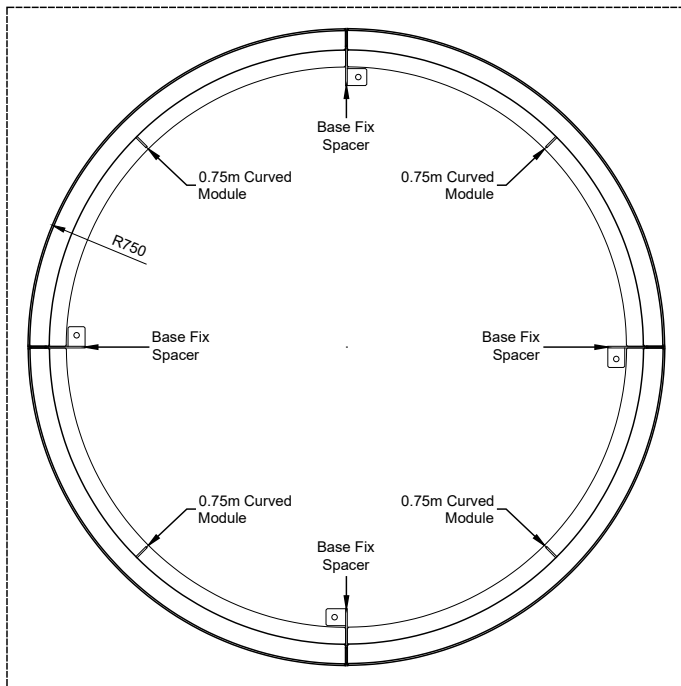
All installation works to be carried out by competent personnel - install as complete unit.

0.7 x 0.5m Stepped Planter (example only)

Cubit Planter (Stepped)

1. If necessary assemble planter using wall modules, spacers and M10 bolts and nuts provided.
2. Install suitable foundation pads (see illustration or to suit planter for larger planter assemblies) with top face at ground level.
3. Position planter in correct orientation with planter central on foundation pads.
4. Mark hole positions through base.
5. Remove the planter; drill holes $\text{\O}12\text{mm} \times 90\text{mm}$ deep (or as bolt manufacturer's recommendations)
6. Clear debris from holes
7. Reposition planter and fix to foundation pads using zinc-coated M10 x 75mm sleeve anchors tightened to 50Nm (or as per manufacturer's instruction).
8. Check level and reinstate ground if necessary





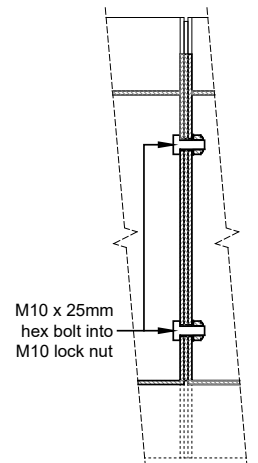
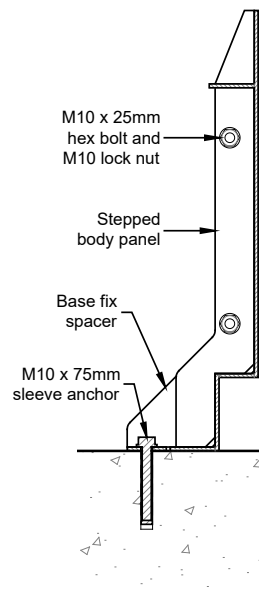
Installation Instructions

All installation works to be carried out by competent personnel - install as complete unit.

Ø1.5m Curved Planter (example only)

Cubit Planter (Curved)

1. If necessary assemble planter using wall modules, spacers and M10 bolts and nuts provided.
2. Install suitable foundation pads (see illustration or to suit planter for larger planter assemblies) with top face at ground level.
3. Position planter in correct orientation with planter central on foundation pads.
4. Mark hole positions through base.
5. Remove the planter; drill holes $\text{Ø}12\text{mm}$ x 90mm deep (or as bolt manufacturer's recommendations)
6. Clear debris from holes
7. Reposition planter and fix to foundation pads using zinc-coated M10 x 75mm sleeve anchors tightened to 50Nm (or as per manufacturer's instruction).
8. Check level and reinstate ground if necessary



5 Pioneer Road, Faringdon,
Oxfordshire SN7 7BU
+44 (0)1367 242731
hello@factoryfurniture.co.uk

