

IMPORTANT:

To avoid any delay, additional costs, or requested alterations when supplying artwork, please read the following specifications carefully.

Requested artwork file format:

*** File format: Jpeg**

To eliminate the risk of print errors, we request that all artwork files are supplied in jpeg format.

If you are unable to supply a jpeg we can convert your file, however this may incur additional costs.
(see proof notes overleaf)

*** Resolution: 300dpi**

*** Colour: CMYK**

*** 100% actual reproduction size**

*** No bleed**

*** No crop or registration marks**

Standard n-viroTM printing

Standard n-viroTM trays allow for full colour printing onto pre-prepared white stock in sizes A4, A3, A2, A1. Any requirement to print to a coloured stock or a different size than that mentioned may require specific file formats and pre-flight checks. Please call to discuss before submitting any artwork.

Tray margin:

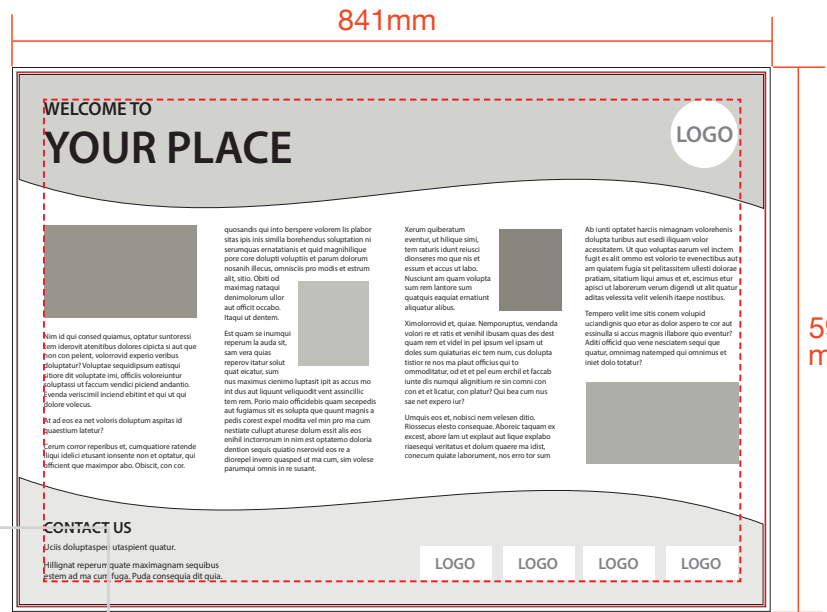
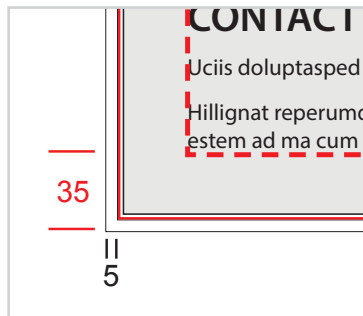
For n-viroTM graphic trays an allowance of 5mm of non-printable space needs to be included in all artwork to allow for the rolled edge of the tray. (see picture below and specification overleaf)



When creating artworks* please make sure they conform to the diagram overleaf. If anything is unclear please contact us for further information.

* Required margins

- White area to allow for rolled edge of tray (5mm)
- Printable area
- Recommended area for live content (text, logos, photos etc.)



Example shown above is of an A1 graphic panel, the maximum printable area, making allowance for the rolled edge is 831mm x 584mm - please apply same margins to ALL 'A' sized artworks

Supplying artwork:

Please supply your artwork via one of the following methods

* CD



* USB Flash Drive



* email



(Attachments up to 10 Mbytes in size)

* large file internet transfer



via: [WeTransfer.com](https://www.wetransfer.com) (recommended)

General notes

Proofs

FWDP cannot accept liability for any errors in the finished print if final version proofs are not supplied with customers artwork, or if the customer has not requested to see full size printed proofs for approval prior to progressing to manufacture. If we have had to convert your file to a compatible file format we may request that you see a hard copy proof and this may incur additional costs.

Colour Matching

Due to variations in printer calibration and substrate type, we cannot guarantee an exact colour match to client supplied proofs, either in our own proofs or the finished article. Should you wish to achieve an exact colour match*, you should inform the studio at the outset, and be aware additional costs may be incurred.

* Although every effort will be made to achieve accurate colour matching, in certain circumstances this may not be possible.

Fitzpatrick Woolmer Design & Publishing Limited

Unit 7 Lakeside Park, Neptune Close, Rochester, Kent, ME2 4LT
 t: 01634 711 771 e: info@fwdp.co.uk w: fwdp.co.uk

NVTSAS02 – n-viro Tray Supplied Artwork Specification, Iss 2



By Appointment to His Majesty The King
 Manufacturer of Signs and Wayfinding
 Fitzpatrick Woolmer Design & Publishing Ltd, Kent