

**IMPORTANT:**

To avoid any delay, additional costs, or requested alterations when supplying artwork, please read the following specifications carefully.

**Requested artwork file format:**

**\* File format: Jpeg**

To eliminate the risk of print errors, we request that all artwork files are supplied in jpeg format.

If you are unable to supply a jpeg we can convert your file, however this may incur additional costs. (see proof notes overleaf)

**\* Resolution: 300dpi**

**\* Colour: CMYK**

**\* 100% actual reproduction size**

**\* No bleed**

**\* No crop or registration marks**

**Standard n-viro™ printing**

Standard n-viro™ prints allow for full colour printing onto pre-prepared white stock in sizes A4, A3, A2, A1, A0 and 1300mm x 1100mm. Any requirement to print to a coloured stock or a different size than that mentioned may require specific file formats and pre-flight checks. Please call to discuss before submitting any artwork.

**Frame overlap:**

For n-viro™ graphic panels that are going into one of our standard sign structures, an allowance needs to be made for a 15mm border that overlaps the edge of the artwork panel.

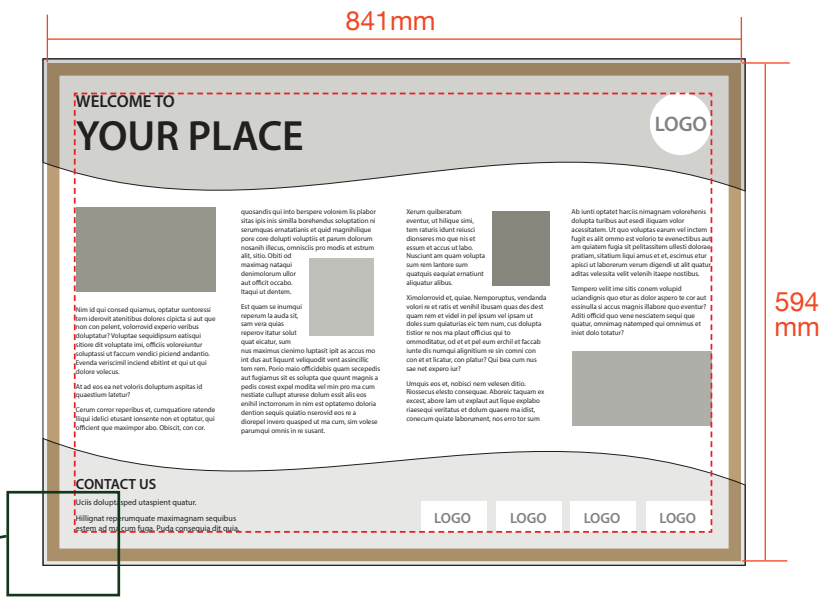
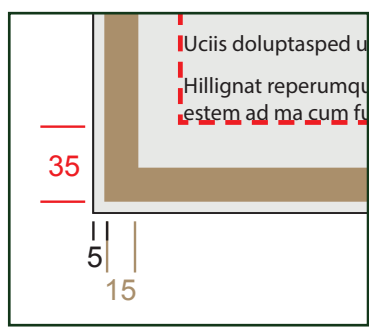
When creating artworks\* please make sure they conform to the diagram below (\*excludes artworks for Bowman™ option B - sign structures). If anything is unclear contact us for further information.

**Required margins**

== Bleed area [ 5mm ]

--- Recommended area for live content (text, logos, photos etc.)

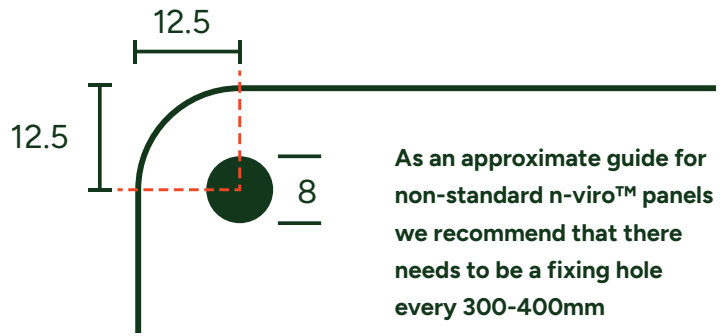
— Area of artwork hidden by the structure frame [ 15mm ] (the 'frame-overlap')



Example shown above is of an A1 graphic panel - please apply same margins to ALL 'A' sized artworks

## Fixing holes:

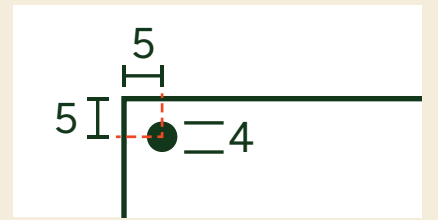
For panels requiring holes, our standard fixing holes are 8mm in diameter and are located as per the adjacent diagram. Please make an allowance for these when creating your artwork (*bearing in mind that the screw head will be approximately 10mm in diameter*). For any n-viro™ panel that requires specific fixing holes we will require a separate vector file showing the page size and the hole positions.



**For n-viro™ graphic panels that require non-standard fixing holes - bespoke requirements must be discussed prior to placing orders.**

## n-viro™ hanging holes

Please be aware that for production purposes all n-viro™ panels (*other than those with fixing holes as above*) have a 4mm diameter hole in two corners of one edge, as per the adjacent diagram.



## Supplying artwork:

Please supply your artwork via one of the following methods

### \* CD



### \* USB Flash Drive



### \* email



(Attachments up to 10 Mbytes in size)

### \* large file internet transfer



via: [WeTransfer.com](https://www.wetransfer.com)  
(recommended)

## General notes

### Proofs

FWDP cannot accept liability for any errors in the finished print if final version proofs are not supplied with customers artwork, or if the customer has not requested to see full size printed proofs for approval prior to progressing to manufacture. If we have had to convert your file to a compatible file format we may request that you see a hard copy proof and this may incur additional costs.

### Colour Matching

Due to variations in printer calibration and substrate type, we cannot guarantee an exact colour match to client supplied proofs, either in our own proofs or the finished article. Should you wish to achieve an exact colour match\*, you should inform the studio at the outset, and be aware additional costs may be incurred.

*\* Although every effort will be made to achieve accurate colour matching, in certain circumstances this may not be possible.*

## Fitzpatrick Woolmer Design & Publishing Limited

Unit 7 Lakeside Park, Neptune Close, Rochester, Kent, ME2 4LT  
t: 01634 711 771 e: [info@fwdp.co.uk](mailto:info@fwdp.co.uk) w: [fwdp.co.uk](http://fwdp.co.uk)

NVSAS02 – n-viro Supplied Artwork Specification, Iss 2 – 15/06/2026



By Appointment to His Majesty The King  
Manufacturer of Signs and Wayfinding  
Fitzpatrick Woolmer Design & Publishing Ltd, Kent