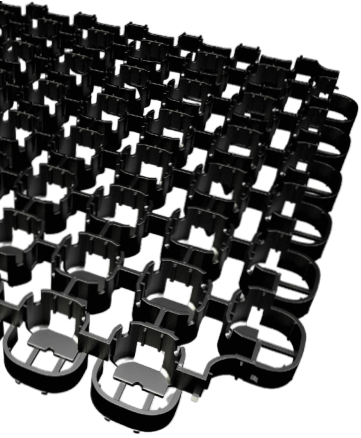


Bodpave™ 40

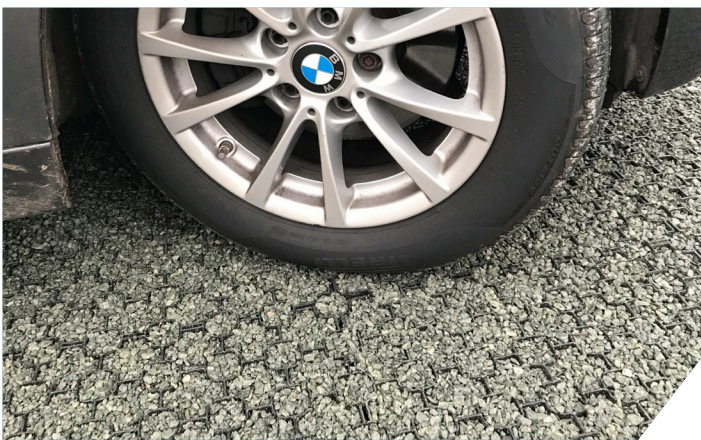
terram.com

Terram Bodpave™ is the original patented interlocking cellular porous plastic paving grid system for ground reinforcement. Manufactured in the UK from 100% UV stabilised recycled and recyclable polymers, it can be installed with either grass or gravel filled surface.



Applications

- Car and light vehicle parks
- Overspill / overflow grass car parks
- Walkways, disabled access routes & golf buggy paths
- Driveways and residential lawn parking
- Sustainable Urban Drainage Solution (SUDS) – source control



Features & Benefits



Suitable for cars and vans

Load bearing capacity up to 250t/SQM



No additional pinning

24 ground spikes per paver provides excellent shear connection and allows slopes up to 1:8 / 12% / 7



+25% Faster installation

Supplied as 4 pre-connected pavers (1m x 1m)



SUDS source control compliant

95% open surface structure



Suitable for hot and cold climates

HDPE expansion/contraction tolerant



50% Lower CO2 footprint

Made out of recycled and recyclable polymers



+250% stronger connections

Overlapping loop and snap fit connections give an excellent 100% lateral transfer of dynamic traffic loads.



100% Manufactured in the UK



+44 (0) 1621 874200
info@terram.com

terram.com
/terram

TERRAM[®]
A Magnera Brand

Unit Properties

Material	100% Recycled and Recyclable Polymers
Colour	Black or Green*
Dimensions	500mm x 500mm x 40mm + 20mm Ground Spike
Coverage	4 Units/SQM
Internal Cell Size	67mm (cruciform) & 46mm (round)
Structure	Rigid Walled, Cellular
Cell Wall Thickness	2.5mm - 5.0mm
Weight	1.125 kg/paver - (4.5 kg/SQM)
Compressive Strength*	< 250 Tonnes/SQM
Connection / Joint Strength*	7kN/m
Basal Support & Anti-shear	Integral 20mm Long Cross & T Section Ground Spikes (24 per paver)
Permeability / Open Cell	Top 95% / Base 65%
Connection	Overlapping Edge Loop & Cell Connection with Integral, Self-locking, Snap-fit Clips

*When using recycled polymers it is difficult to maintain colour consistency between individual units and batches. Virgin polymer may also be used when recycled green polymer is in short supply.

*Compression testing undertaken when units are filled with aggregate.

*Connection/joint testing of unfilled units.

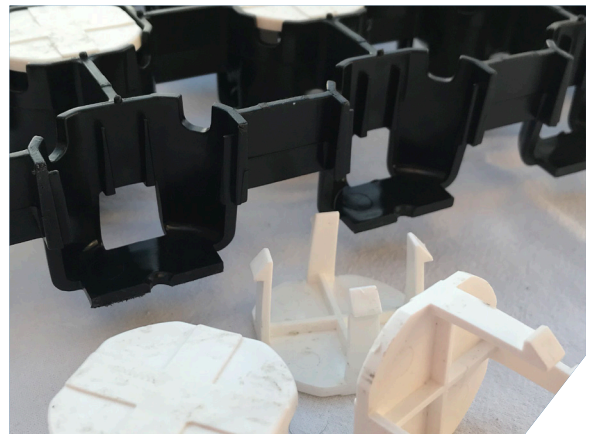
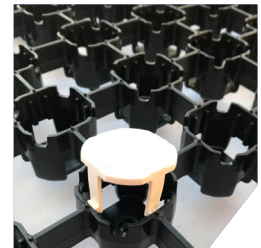
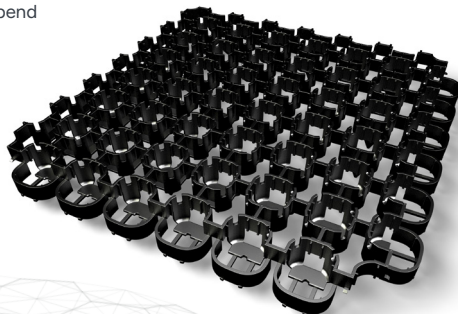
Pack Properties

Dimensions	1.2 x 1.0 x 2.4m Approximately
Gross Weight (Nominal)	285kg
Units per Pack	240 (60 SQM)

Durability Properties

Chemical Resistance	Excellent
UV Resistance	High
Toxicity	Non Toxic
Anticipated Design Life	10 Years*

*Long term durability will also depend upon maintenance, pavement construction and the intensity & frequency of traffic loading.



Packaging & Identification

Terram Bodpave units are supplied on pallets and shrink wrapped for stability.

Storage

Can be stored externally but **do not** stack.

Quality

Terram Bodpave units are supplied having met internal quality requirements in accordance with our Quality Management System which is certified to BS EN ISO 9001:2015.

Additional Information

Markers are available that can be used to delineate parking bays.