

# ENVIRONMENTAL DATA SHEET

## DIABOLO & DIABOLO BABY

### ▶ PRODUCT ENVIRONMENTAL DATA

#### MATERIALS

##### **Eco-friendly materials: 62.20%**

Average content of eco-friendly materials (recycled and bio-based) across the most representative play equipment of the range. [Details on page 2](#)

##### **Recyclable materials: 56.30%**

Average content of recyclable materials across the most representative play equipment of the range. [Details on page 2](#)

#### WARRANTIES

Find all the warranties for the materials in the range. [Details on page 3](#)

- Posts: lifetime warranty
- Panels: lifetime warranty

##### **REPAIRABILITY INDEX: 9.43/10**

The repairability index informs customers about the possibility of repairing the playground or sports equipment purchased. [Details on page 4](#)

##### **CARBON IMPACT: 4.07 kgCO<sub>2</sub>/kg**

Average value recorded in kilograms of CO<sub>2</sub> for one kilogram of equipment across the most representative play equipment of the range. [Details on pages 5 & 6](#)

### ▶ PROLUDIC ENVIRONMENTAL DATA

#### OUR CERTIFICATIONS

Details of all the company's certifications. [Details on page 7](#)

#### PROLUDIC ENVIRONMENTAL POLICY

Find out more about the Group's environmental policy. [Details on page 8](#)



# MATERIALS

## DIABOLO & DIABOLO BABY

### DEFINITIONS

**Eco-friendly materials:** sum of the recycled and bio-based materials

**Recycled materials:** made from recycled or waste materials, which helps reduce greenhouse gas emissions.

**Biosourced materials:** derived from biomass sources, including micro-organisms, plants, fungi and animals. These materials have a very low carbon footprint.

**Recyclable materials:** can be transformed to make new products.



Eco-friendly materials

**62.20%**



Recycled materials: **34.33%**

Biosourced materials: **27.87%**

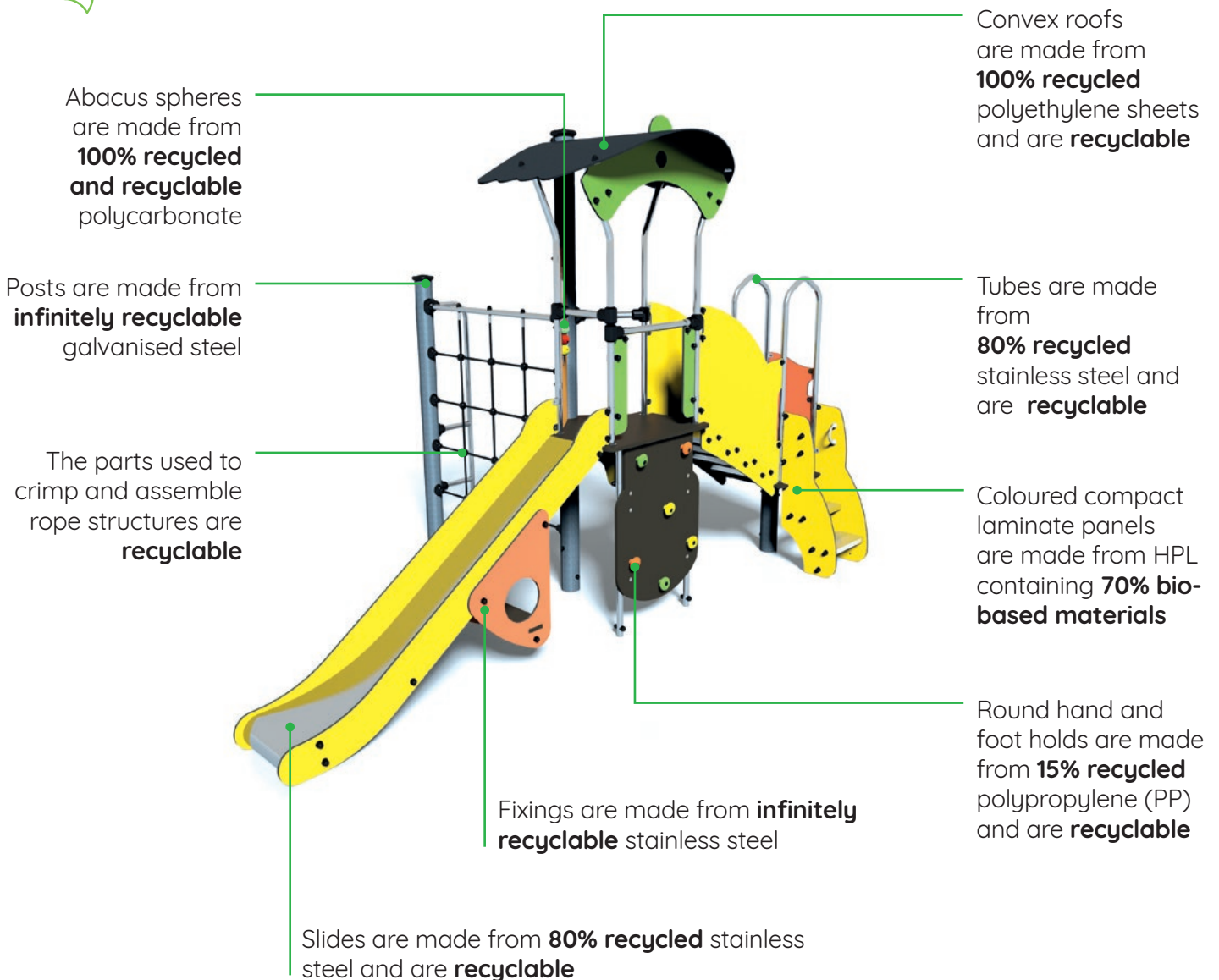


Recyclable materials

**56.30%**



### DETAILS BY MATERIAL



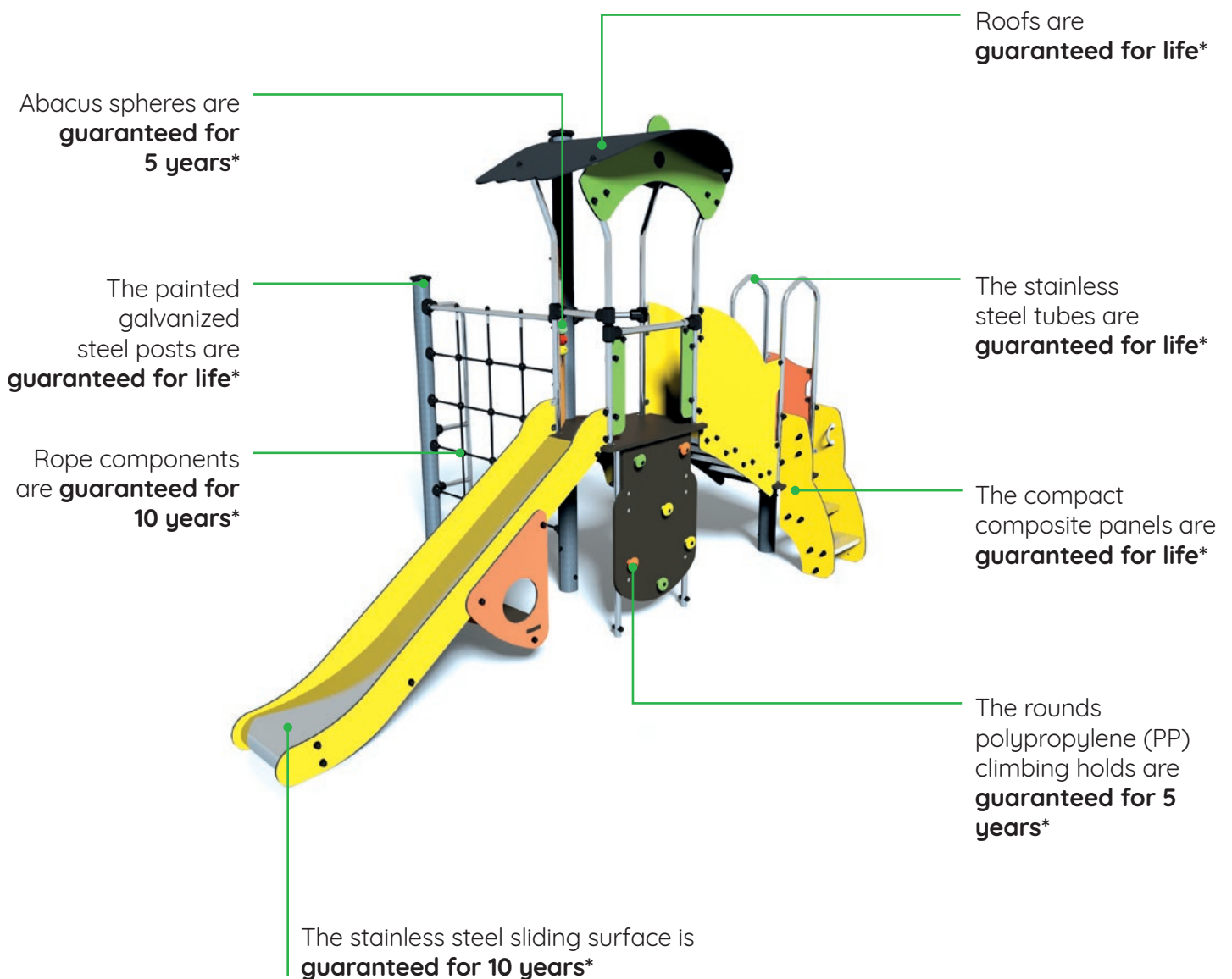
# WARRANTIES

## DIABOLO & DIABOLO BABY

In addition to using carefully selected materials and applying the highest manufacturing standards, Proludic provides extensive guarantees.

### WARRANTIES

Proludic is committed to providing durable, high-quality products.



\*Proludic guarantees the availability of spare parts, including for discontinued ranges, up to 10 years after the end of production.

# REPAIRABILITY INDEX

## DIABOLO & DIABOLO BABY



### REPAIRABILITY INDEX

9.43/10

The reparability index assesses the possibility of repairing an item of equipment based on five criteria:

**CRITERION 1:** DOCUMENTATION

**CRITERION 2:** ACCESS FOR DISMANTLING

**CRITERION 3:** AVAILABILITY OF SPARE PARTS

**CRITERION 4:** PRICE OF SPARE PARTS

**CRITERION 5:** TROUBLESHOOTING & AFTER-SALES SERVICE

The score informs customers about the possibility of repairing the equipment purchased.

We guarantee our customers a repairable product, with spare parts that are available for 20 years and delivered within 15 days.

This score stands out with our ability to identify the problem (and the part to be replaced) within 48 hours.



### DETAILS OF THE REPAIRABILITY INDEX

<b>CRITERION 1:</b> DOCUMENTATION	<b>1.1</b>	Duration for which the product's technical documentation will be available, including instructions on how to use and maintain the product	18.1/20 Very good	94.3/100 or <b>9.43/10</b>
<b>CRITERION 2:</b> ACCESS FOR DISMANTLING	<b>2.1</b> <b>2.2</b> <b>2.3</b>	Ease for disassembling the parts Tools required Characteristics of the fixings	17.3/20 Good	
<b>CRITERION 3:</b> AVAILABILITY OF SPARE PARTS*	<b>3.1, 3.2</b> <b>3.3, 3.4</b>	Duration for which spare parts are available Delivery times for spare parts	20/20 Excellent	
<b>CRITERION 4:</b> PRICE OF SPARE PARTS	<b>4</b>	Ratio between the price of the spare parts and the price of the new equipment	20/20 Excellent	
<b>CRITERION 5:</b> TROUBLESHOOTING & AFTER-SALES SERVICE	<b>5.1</b> <b>5.2</b>	Troubleshooting & handling of the problem Proludic after-sales service	18.9/20 Very good	



# CARBON IMPACT

## DIABOLO & DIABOLO BABY

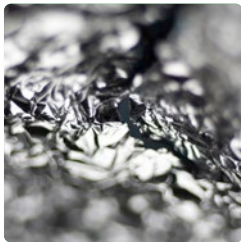
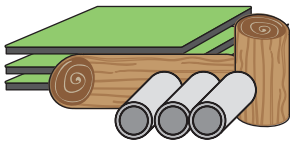


4.07 kgCO<sub>2</sub>/kg\*

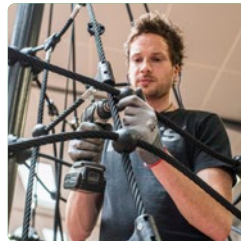
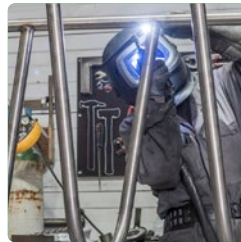
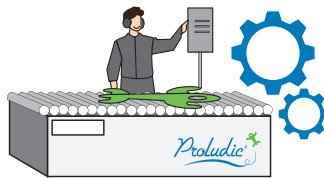
Our carbon impact evaluates a product's footprint, from extracting the raw materials through to manufacturing and preparing the product for shipment from the factory (cradle-to-gate concept). The method used to calculate the carbon impact is certified by Bureau Veritas (see next page).



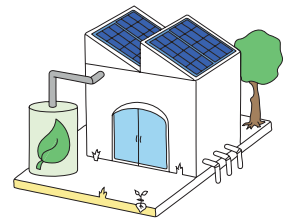
### RAW MATERIALS



### MANUFACTURING



### FACTORY GATE



\*Average value in kilograms of CO<sub>2</sub> for 1 kilogram of equipment across the most representative play equipment of the range.



**Proludic S.A.S**  
181 rue des Entrepreneurs  
37210 Vouvray  
France



## **Verification of method for CO<sub>2</sub> calculation, using an ERP software system for Proludic S.A.S playgrounds**

Data version no. 2024-01-29

The method and data for CO<sub>2</sub> calculation, using an ERP software system, are in compliance with the principles of a carbon footprint impact according to the GHG protocol (Greenhouse Gas Protocol).

The method is in conformity with ISO 14067:2018. A verification of the method has been done through presentation of the data, modelling, and results based on product samplings from various ranges such as multi-play equipment, swings, springers, and rope structures.

**Date: 29. January 2024 | Valid until: 29. January 2026**

**Verified by:**

Julie Marie Vejsgaard Larsen, LCA & EPD Consultant

Waldemar Corydon Hemdrup, LCA & EPD Consultant

Verification based on report: Verification of a method for CO<sub>2</sub> calculation using an ERP software system for Proludic S.A.S playgrounds version 1.0, prepared by: Bureau Veritas HSE, Denmark: Julie M. V. Larsen and Waldemar Corydon Hemdrup.

**Publication date: 29. January 2024**

**By Bureau Veritas HSE**  
[www.bureauveritas.dk](http://www.bureauveritas.dk)  
+45 7731 1000



# OUR CERTIFICATIONS

**Proludic is committed to providing the best possible service to its customers and users.**

Our actions are guided by a sustainable development and continual improvement strategy. As a testament to this commitment, Proludic has obtained endorsement from the relevant certification bodies that its management system, products, services and processes comply with applicable regulations, as well as national and international standards.

## RECOGNISED QUALITY



### ISO 14001

Proludic's commitment to the environment has been certified since 2006. Proludic does everything in its power to combine superior technical performance with respect for the environment, such as reducing resource use during manufacturing, improving processes for managing industrial waste, and minimising waste at the production site.

### ISO 9001

Since 2001, ISO 9001 certification of Proludic's quality management system has been renewed every year. Behind this endorsement, Proludic's ambition remains unchanged, i.e. demonstrate its ability to retain the confidence of its customers and users by delivering an effective end-to-end service.

## A CERTIFIED ENVIRONMENTAL APPROACH

Since 2015, Proludic has certified its chain of custody and guarantees that its wood is sourced from sustainably managed forests. PEFC certification ensures traceability across every stage of the wood transformation cycle, from the forest to the finished product.



## ENDORSED COMPLIANCE WITH STANDARDS



TÜV certification guarantees that Proludic's equipment has passed a rigorous safety inspection and complies with national, regional and international regulations. As such, you can rest assured that you are buying a product that has been inspected, tested and certified.

# PROLUDIC ENVIRONMENTAL POLICY

Since day one, Proludic has actively pursued a policy that prioritises quality and promotes social responsibility. We are working to reduce the environmental impact of our products and improve their sustainability, while guaranteeing local presence across all our activities.

## Environmental mission:

“True to our values, we are taking tangible action to maximise the service life of our designs and reduce their environmental impact.”

**We are striving to tackle global warming for future generations.**

### PILLAR 1 Sustainability

Offer playgrounds, equipment and solutions that are capable of standing the test of time and withstanding all weather conditions!

### PILLAR 2 Fight against climate change

Reduce our carbon emissions by taking action across the entire product lifecycle, from sourcing through to production, transport and installation.

### PILLAR 3 A commitment to local presence

Ensure that we are close to our customers and partners at every level and at each stage of the value chain, while guaranteeing that our designs are tailored to the local area and its needs.



All our environmental policy indicators can be found on our website and in our brochure:

