



SEEDS & SCIENCE

# MASTERLINE®

Amenity grass seed mixtures  
Wild flowers • Fertilisers 2026

# MASTERLINE®

The Professional Choice



## CONTENTS

Introduction	2 - 3
Mixture Selector	4 - 5
Seeding Green Solutions	6
Sustainable Turf Solutions from DLF	7
Microclover®	8
GroMax	9
4turf® Tetraploid	10 - 11
Grass Seed Mixtures	12 - 23
Disease Tolerance	24 - 27
Grass Seed Mixtures	28 - 37
DLF Select Turf Quality Seed	38 - 39
Wildflower Mixtures	40 - 60
Colour Boost	61 - 71
Management Guidelines	72 - 73
Fertiliser	74 - 75
Hydroseeding Products	76 - 77
Useful Data	78
Contacts	79

  
**MASTERLINE®**  
- THE PROFESSIONAL CHOICE -

## When you deal with seed from DLF, you have science on your side.

Research and development are at the heart of our business. Based on trends, needs and wants of the marketplace our worldwide research and breeding network develop new and better performing varieties to be used in mixtures for a wide range of purposes and climatic conditions. Before we release new seed to the market, we test its suitability in a variety of climates and different soil types. The data tells us how your seed will perform.

We are the world's largest producer and distributor of grass seed with a global network. From our offices in Denmark, Holland, the UK, Ireland, France, Germany, Poland, Czech Republic, Russia, China, New Zealand, Canada, USA, Uruguay and South Africa, we cover the world.

### NEW VARIETIES AND BETTER RETURNS, SEASON AFTER SEASON

Growers of grass seed are always looking ahead for better performing varieties. In this constant push for improvement, we lead the way. By devoting so much time and resources to R&D, we release a stream of new and enhanced seed varieties. We give you something fresh and exciting to offer your customers each season. Our history of seed development has created a diverse portfolio. It contains seeds for just about any grass user or set of environmental circumstances. With DLF's seeds and science behind you, you can give your customers exactly what they need.



# MIXTURE SELECTOR

	PM5	PM10	PM13	PM15	PM20	PM25	PM25R	PM26	PM27	PM28	PM29	PM35	PM36	PM40
AIRPORT														
ATHLETICS														
BOWLING GREEN	█	█											█	
CARAVAN PARKS									█					
COASTAL SITES														
CONTAMINATED SITES														
CRICKET OUTFIELD														
CRICKET SQUARE												█	█	
DRIVING RANGE														
DRY SOILS								█	█		█			
ECONOMY														
EMBANKMENTS						█	█	█	█		█			
FERTILITY BUILDING														
FINE LAWNS	█				█									
FOOTBALL														
GALLOPS/POLO														
GOLF FAIRWAY			█		█									█
GOLF GREEN	█	█	█	█										
GOLF ROUGH						█								
GOLF TEE			█		█								█	█
HARD WEARING LAWN														
LANDFILL														
LANDSCAPE GENERAL								█	█		█			
LOW MAINTENANCE						█	█	█	█					
PADDOCKS														
ROAD VERGE									█					
RUGBY														
SHADE														
TENNIS COURT												█	█	
WETLAND										█				
PAGE NUMBER	12	12	13	13	14	14	15	15	16	16	17	17	18	18



# TURF TO REDUCE YOUR ENVIRONMENTAL IMPACT

## BETTER-PERFORMING TURF REDUCES YOUR INPUTS

For more than 30 years, our breeding and product development has created more resilient varieties adapted to local climates. Our turf solutions, such as 4turf®, ProNitro®, 4salt and Microclover®, are designed for maximum performance from minimal resource input. They show increasing resilience to a changing climate, increased disease pressure, and increasingly severe droughts and floods.

Their ability to thrive with less input from you reduces your own impact on the climate and environment.

## TURF TO HELP MEET THE UN SUSTAINABLE-DEVELOPMENT GOALS

All turf is green, but some turf are greener than most. These are the turf solutions that align with the UN's sustainable development goals (SDGs) for a better and more sustainable future for all in 2030.

These greener, more resilient turf solutions need fewer resources (water, fertiliser, pesticide) throughout their lives - from establishment to day-to-day maintenance. By choosing these turf solutions from DLF, you'll be doing your bit to help meet UN SDGs 6, 11, 13 and 15.



**SEEDING  
GREEN  
SOLUTIONS**

# SUSTAINABLE TURF SOLUTIONS FROM DLF

Turf plays a major part in recreational and leisure activities. Sports pitches and landscape solutions are key areas where professional turf managers can choose turf solutions from DLF that help them contribute to some of the UN's 17 SDGs.

## **4TURF® – FOR LOW-INPUT MANAGEMENT**

Super resilient 4turf® tetraploid perennial ryegrasses are ideal for the sports and amenity sector. With its exceptional disease tolerance and winter hardiness, 4turf® needs less maintenance and fewer chemical inputs. The drought tolerance of 4turf® keeps professional pitches, parks and landscapes looking greener for longer, and reduces the need for irrigation.

## **PRONITRO® – NEEDS LESS WATER TO GERMINATE AND ESTABLISH**

ProNitro® is a persistent, low-input, flexible and sustainable solution for professional pitches, parks and landscaping. Our ProNitro® seed coating with hydroactive water management technology ensures better use of the water in the soil surrounding each seed. This efficient method of increasing a seed's access to water means that it needs up to 15% less water for successful germination and establishment. At the same time, the precisely targeted fertiliser in the seed coat reduces leaching and eliminates the need for seed-bed fertiliser.

## **4SALT – FOR BETTER GROWTH WHEN THE WATER QUALITY VARIES**

4salt turf varieties have a high tolerance to salt. If you are not able to irrigate with potable water, your turf can suffer. Non-potable water can contain salt and other substances which can compromise turf growth and quality. By including 4salt varieties in your mixture, your turf will stay green and healthy, no matter the water quality.

## **MICROCLOVER® – THE NATURAL NITROGEN-FIXER**

Microclover® fulfils the desire for a more sustainable use of nitrogen. Since clover has the ability to fix nitrogen from the air, its inclusion in a turf mixture provides your turf with a natural supply of nitrogen. Microclover® from DLF is an economic and reliable source of home-grown fertiliser. Microclover® goes well with turf species, providing a dense, uniform appearance and creating a more drought tolerant turf that stays green, longer.

Turf from DLF does more than help to meet the UN SDGs. It also works to protect your turf from some of the other environmental challenges that we face, such as soil erosion, water run-off, and air pollution. In so many ways, these are sustainable solutions.

## **DLF TURF SOLUTIONS HELP TO ACHIEVE THE FOLLOWING UN SUSTAINABLE DEVELOPMENT GOALS**

### **6 CLEAN WATER AND SANITATION**

Clean water is a scarce resource. We offer turf solutions that can withstand irrigation with non-potable water, drought tolerant grasses that need less water, and more disease tolerant grasses that need less herbicides and fungicides that can potentially seep into groundwater. These turf solutions use less water and support sustainable water management.

### **11 SUSTAINABLE CITIES AND COMMUNITIES**

Population growth demands new ways of thinking about cities and the urban environment. Turf creates green urban spaces offering great value in terms of health, exercise, and recreation. Turf also helps to reduce the temperature, clean the air and support the goal of better air quality.

### **13 CLIMATE ACTION**

A changing climate and rising temperatures are the results of continued emissions of greenhouse gasses. We have developed turf solutions for sports and recreational areas that have increased resilience and adaptability, and require less maintenance to help reduce CO<sub>2</sub> emissions.

### **15 LIFE ON LAND**

Earth's ecosystems are under pressure, making sustainable management essential. We have developed turf varieties that need less fertiliser and pesticides, yet still show a consistently high quality. These varieties help you provide more sustainable management of your green areas.

# MICROCLOVER®

## The natural nitrogen-fixer for sustainable turf management

### MICROCLOVER® MAKES TURF MANAGEMENT EASIER

Turf managers want healthy, green turf all year round. But local legislation often puts restraints on the use of water and fertiliser, which makes turf management more difficult, more costly and compromises quality. Microclover® can ease the problem of keeping your turf green, lush and sustainable.

Microclover® is a legume with the natural ability to fix nitrogen from the air. To make the most of this ability, we developed our unique small leaved Microclover® specifically for use with turf.

### INCREASED DROUGHT TOLERANCE

Microclover® grows low between your turf plants, maintaining an even distribution, while supplying your turf with all the nitrogen it needs.

Microclover® blends in well with turf species to provide a dense, uniform appearance, and a more drought-tolerant turf that stays green longer.

### SUSTAINABLE TURF MANAGEMENT WITH MICROCLOVER®

By adding Microclover® to your turf mixture, your turf has its own built-in fertiliser. As the clover grows between its companion turf plants, it feeds them with nitrogen. It can do this because Microclover® develops root nodules that convert atmospheric nitrogen into a natural fertiliser. The process of nitrogen release continues throughout the growing season until the first frosts.

The nitrogen is available when and where it is needed, without risk of leaching or of fertiliser burning in the field. Since Microclover® can generate as much as

180 kg N per ha per year, this natural route to nitrogen fixing can significantly reduce your need for artificial fertiliser. The competitiveness of Microclover® is also beneficial. The plant quickly fills gaps to lock out weeds and reduce the need for herbicides. Since herbicides may harm Microclover®, they're best avoided.

### INCREASE THE WEAR-TOLERANCE OF YOUR TURF

The appearance of turf containing Microclover® is superior to that of traditional turf. The Microclover® fertilises the field to increase its wear tolerance. At the same time it weaves its stolons into the turf, spreading and integrating evenly for a harmonious visual look. In so many ways Microclover® improves the performance of even the highest ranking, wear tolerant varieties.



## Improved visual appearance

During drought and cold weather, clover stays green for much longer than grasses do. Pitches, courses or fields containing Microclover® look greener earlier and later in the year. Summer colour is better too because the deep rooting system of Microclover® makes it tolerant to drought.

When mown low, the tiny leaves and short stems of Microclover® look – from a distance – like ordinary turf. They provide a good visual fit with your turf mixture.



## Microclover® Mixtures

**PM26**  
**ECOSWARD**

See page 15

**PM27**  
**ECOSWARD PLUS**

See page 16

# GROMAX

Biostimulants assist the seedlings' ability to take advantage of the soil's own inherent reserves of nutrient by stimulating the soil's microflora, resulting in improved root growth and establishment.

GroMax is a dry formulation of natural humates and humic acids, seaweed extract, a proprietary blend of natural sugars (sucrose), vitamins (B complex & K), soluble potash and buffering agents. The product is compatible with most micronutrients, fertilisers and pesticides.



## INGREDIENT SUMMARY

### HUMIC ACIDS

- Rich in auxin type substances which enhance antioxidant synthesis – important in increasing plant metabolism under stress conditions
- Serve as an important high carbon food source for soil microorganisms
- Improve the permeability of cell wall membranes in roots, allowing more rapid absorption of essential nutrients

### SEAWEED EXTRACT

- Contains high levels of cytokinins which promote cell division and lateral root growth and delay the ageing process of plant tissue
- Stimulates root growth after damage by disease or root feeding insects, or under conditions of temperature, water or salt stress

### SUCROSE

- Serves as a high energy food source for plant and soil microorganisms

### B COMPLEX & K VITAMINS

- Act as important catalysts to enhance and drive plant metabolism. Vitamin B1 is widely used as a rooting aid

### AMINO ACIDS

- Form the building blocks of proteins – essential for plant growth and metabolism

### POTASSIUM

- Plays a vital role in disease resistance and overall hardiness of grass plants

**GroMax**

# 4TURF® TETRAPLOID

## Resilient turf for year-round use

### 4TURF® WITHSTANDS THE STRESSES OF SPORTS AND LEISURE

4turf® is a unique range of tetraploid perennial ryegrass varieties developed for year-round resilience. 4turf® varieties are fast establishing, deep rooting, resilient, and tolerant to stress. Their ability to quickly generate a large root mass ensures good performance against the stresses of drought, cold, and disease. Turf grown from 4turf® seed stays greener for longer.

### FOUR SETS OF CHROMOSOMES FOR BETTER PERFORMANCE

4turf® varieties perform better because they have four sets of chromosomes, whereas perennial ryegrass, in its natural state, has just two sets. The doubling of chromosomes creates bigger cells with more chloroplasts. Each cell contains more chlorophyll and produces more sugars.

The boost in chlorophyll gives you healthy, high energy plants. They are more stress-tolerant and recover faster after periods of extreme temperature and disease attack. They're more sustainable too because you need only a minimal input of fertiliser and water to maintain your turf.

4turf® tetraploid seeds are bigger than diploid seeds. A larger seed size gives you better seed-to-soil contact for faster, stronger establishment and more playing hours.

### SECURE MORE PLAYING HOURS – EVEN DURING DROUGHT

4turf® performs better during a drought. The improved root-system structure makes 4turf® more effective at exploiting natural water reserves and need less watering. Your turf stays greener for longer, which reduces the risk of damage to your pitch, course, or landscape during dry periods.

- Fast establishment
- Better drought tolerance
- Better cold tolerance
- Exceptional disease tolerance

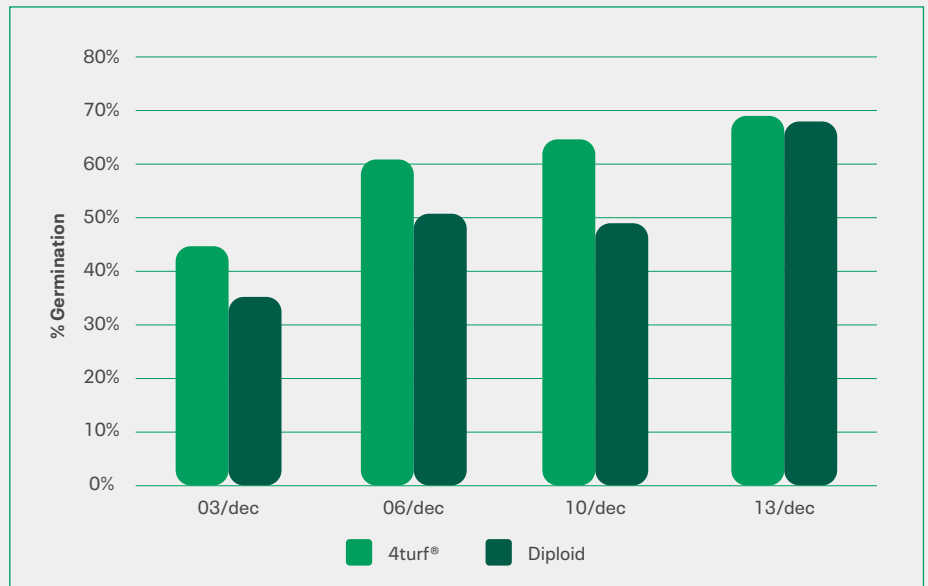
When the rain does return, 4turf® varieties recover faster. Drought trials conducted in France's Loire Valley prove that 4turf® tetraploid varieties are significantly more drought tolerant than diploids.

### RESILIENT, LOW-MAINTENANCE TURF FOR ANY USE

4turf® is a high quality solution for turf managers. It makes the establishment or renovation of your pitch, course, or field

more successful. Quick establishment prevents weeds from developing, while proven disease tolerance is a result of stronger and more resilient genetics. The result is a low-maintenance turf that needs less overseeding and herbicides to stay green and healthy throughout a long season of use.

### GERMINATION AT 4°C – SOWING DATE NOVEMBER 21ST



"After the positive noises I heard from England, we started to use mixtures with 4turf® for reseeding and overseeding both the hybrid and the traditional sports pitches of Ajax. And with clear results! The rapid establishment and growth of 4turf® ensures a good competition with unwanted weed development. Which means less time and energy is wasted to avoid this. A higher disease tolerance contributes to a reduced disease pressure. The salt tolerance ensures that it continues to grow well even with the use of salinity water. Also, the diploid and tetraploid grasses are hardly distinguishable by colour, even the fineness of leaves of 4turf® has improved over the years. The combination of tetraploid and diploid grass ensures a nice and evenly closed pitch. After working for two years with 4turf® I am very satisfied with the results."

Martin Brummel · Grounds Manager, AFC Ajax · The Netherlands

“ The rapid establishment and growth of 4turf® ensures a good competition with unwanted weed development. Which means less time and energy is wasted to avoid this



### EXCELLENT WINTER GROWTH AND HARDINESS

4turf® shows exceptional winter performance. During cold weather, 4turf® stays active, and the seeds still germinate even at 4°C. As a result, you can sow earlier in the spring or overseed later in the autumn. Tough cold-weather trials in Finland proved superior winter hardiness in several 4turf® varieties. 4turf® is also the top performer for winterhardiness within independent official SCANTURF trials.

### GREEN TURF ALL YEAR ROUND

4turf® looks good throughout the year. The turf is a deeper dark-green than traditional perennial ryegrass varieties. At the same time, its improved year-round stress-tolerance gives you a healthy and thriving turf with better resistance to weed invasion and turf diseases. Fast establishment extends the 4turf® playing season. Your newly sown turf becomes greener and playable sooner, and for longer, compared to traditional varieties of perennial ryegrass.



# PM5

## ECONOMY GREEN



This traditional 80:20 mixture offers good results at a reasonable price.

### GOLF AND BOWLING GREENS

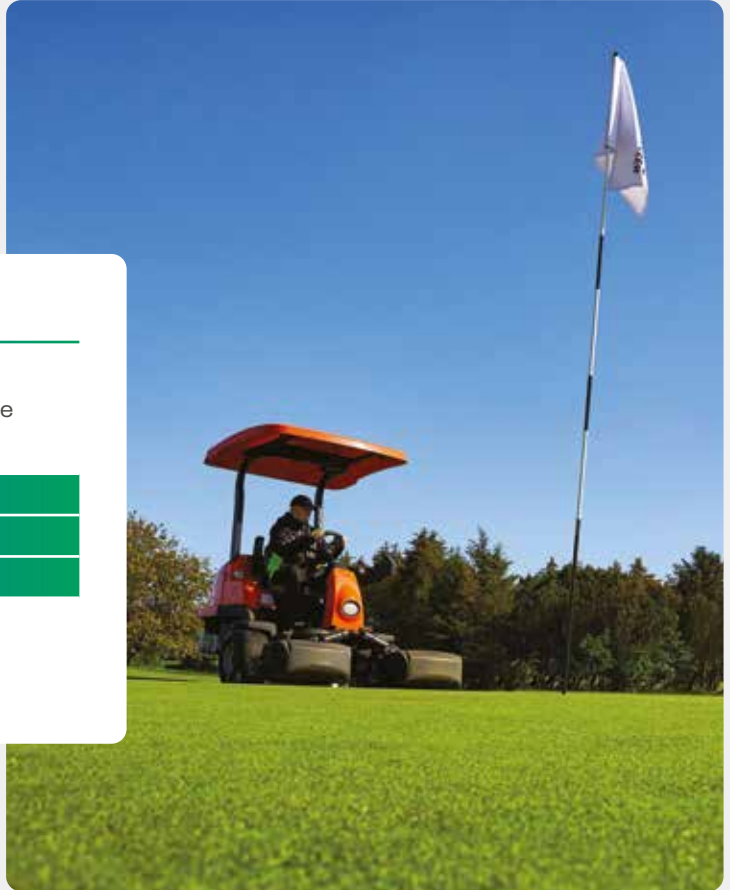
40%	<b>Wagner</b>	Chewings Fescue
40%	<b>Pinafore</b>	Slender Creeping Red Fescue
20%	<b>Jorvik</b>	Browntop Bent

**Sowing rate: 35g/m<sup>2</sup>**

**Overseeding: 25g/m<sup>2</sup>**

**Mowing height: down to 5mm**

**GroMax** treated



# PM10

## TRADITIONAL GREEN



An ideal mixture for greens renovation providing rapid germination, a fine putting surface and excellent year round colour.

### GOLF AND BOWLING GREENS

25%	<b>Highnote</b>	Chewings Fescue
15%	<b>Orionette</b>	Chewings Fescue
20%	<b>Sarolea</b>	Slender Creeping Red Fescue
20%	<b>Absolom</b>	Slender Creeping Red Fescue
10%	<b>Jorvik</b>	Browntop Bent
10%	<b>Arrowtown</b>	Browntop Bent

**Sowing rate: 35g/m<sup>2</sup>**

**Overseeding: 25g/m<sup>2</sup>**

**Mowing height: down to 5mm**

**GroMax** treated



# PM13

## FINE FESCUE



A high quality fine fescue mixture designed for the renovation of greens, tees and fairways. The mix will establish quickly and has excellent year round colour and disease resistance. Especially useful for over sowing early and late in the season when following a sustainable golf management programme. Now benefiting from top rated Absolom slender creeping red fescue.



### HIGH QUALITY GREENS, TEES AND FAIRWAYS - FESCUE OVERSEEDING

35%	<b>Caldris</b>	Chewings Fescue
15%	<b>Bogart</b>	Chewings Fescue
30%	<b>Absolom</b>	Slender Creeping Red Fescue
20%	<b>Pinafore</b>	Slender Creeping Red Fescue

**Sowing rate:** 35-50g/m<sup>2</sup>

**Overseeding:** 15-25g/m<sup>2</sup>

**Mowing height:** down to 5mm

**GroMax** treated

# PM15

## GREEN ALLBENT



An all browntop mixture, ideal for over sowing of existing greens. Top rated cultivars for greens use, this combination provides excellent year round colour and disease resistance.



### HIGH QUALITY HARD WEARING LAWN

50%	<b>Arrowtown</b>	Browntop Bent
25%	<b>Teetop</b>	Browntop Bent
25%	<b>Cleek</b>	Browntop Bent

**Sowing rate:** 10g/m<sup>2</sup>

**Overseeding:** 5g/m<sup>2</sup>

**Mowing height:** down to 4mm

**GroMax** treated

# PM20

## FINETURF



A mixture of only the best species ensures the production of a truly first class fine turf sward. An important pre-requisite is a clean seed bed free from coarse species so that the full benefits of the short fine varieties can be seen.

### TEES, FAIRWAYS AND HIGH QUALITY FINE LAWNS (WITHOUT RYEGRASS)

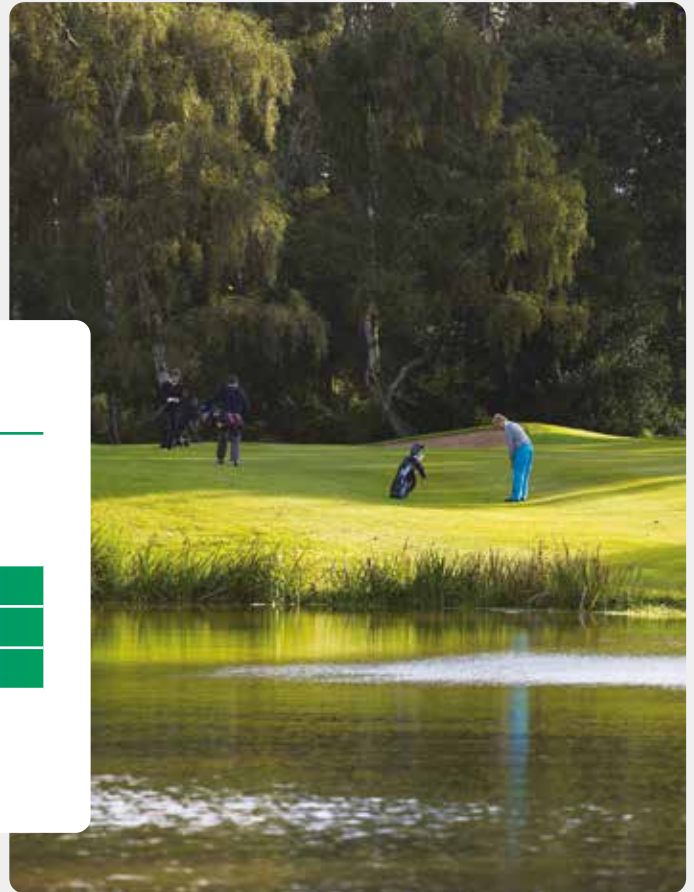
20%	<b>Wagner</b>	Chewings Fescue
20%	<b>Pinafore</b>	Slender Creeping Red Fescue
60%	<b>Sergei</b>	Strong Creeping Red Fescue

**Sowing rate:** 35-50g/m<sup>2</sup>

**Overseeding:** 15-25g/m<sup>2</sup>

**Mowing height:** down to 10mm

**GroMax** treated



# PM25

## GRO-SLOW



This is a reduced maintenance mix that is naturally low growing and attractive. Using fine grasses that are very tolerant of dry and infertile conditions, reducing the need for additional applications of water and fertiliser. The addition of Crested dogstail to the mix ensures a quick germination and green up of the sward.

### LOW MAINTENANCE/POOR SOILS/ EMBANKMENTS/GOLF ROUGH

10%	<b>Pinafore</b>	Slender Creeping Red Fescue
45%	<b>Maxima</b>	Strong Creeping Red Fescue
30%	<b>Dumas</b>	Hard Fescue
10%		Crested Dogstail
5%	<b>Jorvik</b>	Browntop Bent

**Sowing rate:** 25-50g/m<sup>2</sup> 4g/m<sup>2</sup> when sowing with wild flora

**Overseeding:** 15-25g/m<sup>2</sup>

**Mowing height:** 20mm or twice/year to approx 100mm

**Unmown height:** approx 150-200mm (excluding flower heads) depending on fertility

**GroMax** treated

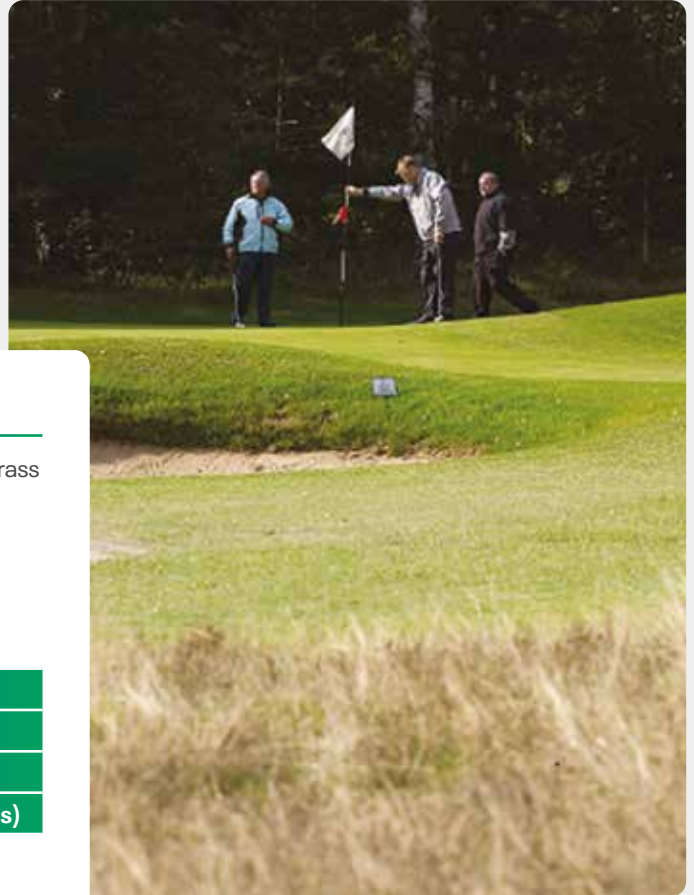


# PM25R

## GRO-SLOW PLUS



The addition of Double 4turf® tetraploid rye grass to our standard low maintenance mixture is suitable when rapid establishment is also required. 4turf® has a more open habit, perfect to allow the finer grasses to establish & offers improved drought tolerance and a stronger root system



### LOW MAINTENANCE/POOR SOILS/EMBANKMENTS

15%	<b>Double</b>	4turf® Tetraploid Perennial Ryegrass
10%	<b>Pinafore</b>	Slender Creeping Red Fescue
40%	<b>Maxima</b>	Strong Creeping Red Fescue
20%	<b>Dumas</b>	Hard Fescue
10%		Crested Dogstail
5%	<b>Jorvik</b>	Brown-top Bent

**Sowing rate: 25-50g/m<sup>2</sup>**

**Overseeding: 15-25g/m<sup>2</sup>**

**Mowing height: 20mm or twice/year to approx 100mm**

**Unmown height: approx 150-200mm (excluding flower heads)**

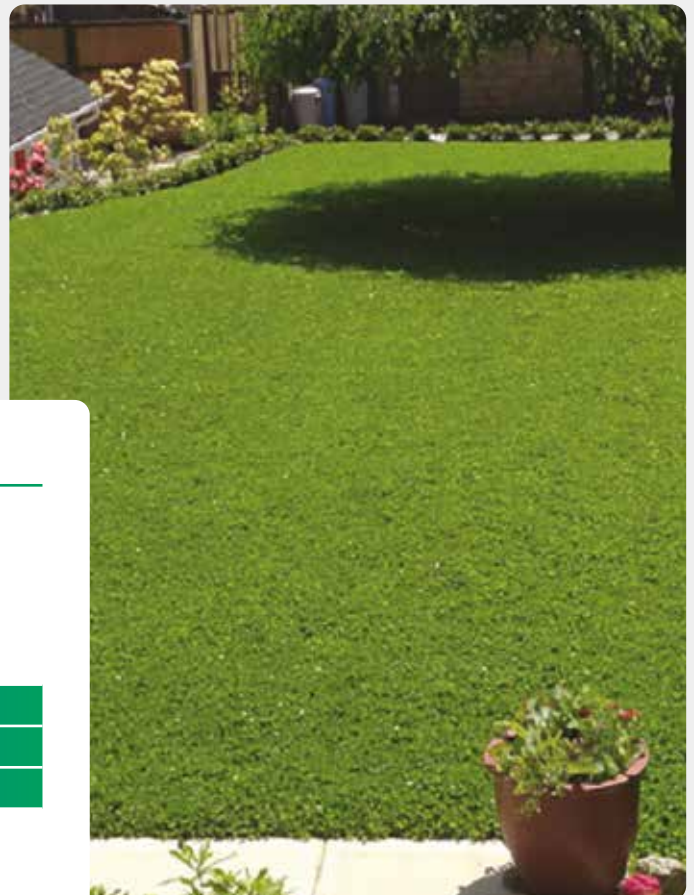


# PM26

## ECOSWARD



Ecosward mixtures have been developed to reduce input costs and be kind to the environment by eliminating the need for excessive fertiliser, water and herbicide. Adding Microclover to the mixture naturally fixes nitrogen for the grasses while significantly increasing drought tolerance and disease resistance. Produces a visually attractive, dark green turf.



### LOW MAINTENANCE LANDSCAPE MIX WITH CLOVER

20%	<b>Wagner</b>	Chewings Fescue
15%	<b>Pinafore</b>	Slender Creeping Red Fescue
50%	<b>Sergei</b>	Strong Creeping Red Fescue
10%	<b>Miracle</b>	Smooth Stalked Meadow Grass
5%		Microclover

**Sowing rate: 25g/m<sup>2</sup>**

**Overseeding: 25g/m<sup>2</sup>**

**Mowing height: 13-25mm**

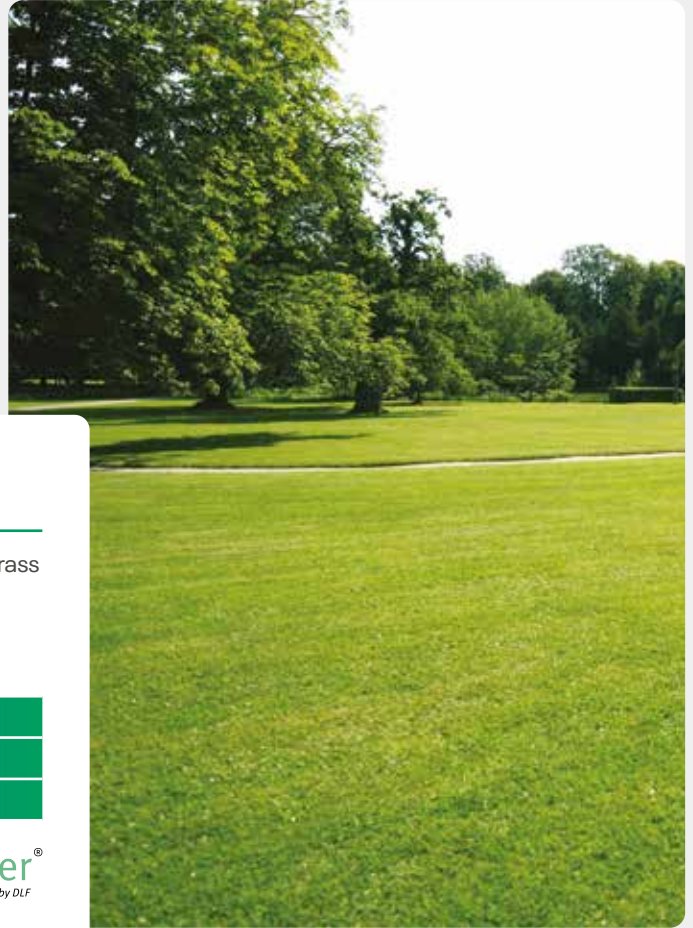


# PM27

## ECOSWARD PLUS



Ecosward mixtures have been developed to reduce input costs and be kind to the environment by eliminating the need for excessive fertiliser, water and herbicide. Adding Microcover to the mixture naturally fixes nitrogen for the grasses while significantly increasing drought tolerance and disease resistance. Produces a visually attractive, dark green, hard wearing turf. Especially suitable for reinforced paving systems. High carbon capture mixture.



### LOW MAINTENANCE LANDSCAPE MIX WITH CLOVER INCLUDING RYEGRASS

<b>50%</b>	<b>Double</b>	4turf® Tetraploid Perennial Ryegrass
<b>35%</b>	<b>Sergei</b>	Strong Creeping Red Fescue
<b>10%</b>	<b>Wagner</b>	Chewings Fescue
<b>5%</b>		Microclover

**Sowing rate: 25g/m<sup>2</sup>**

**Overseeding: 25g/m<sup>2</sup>**

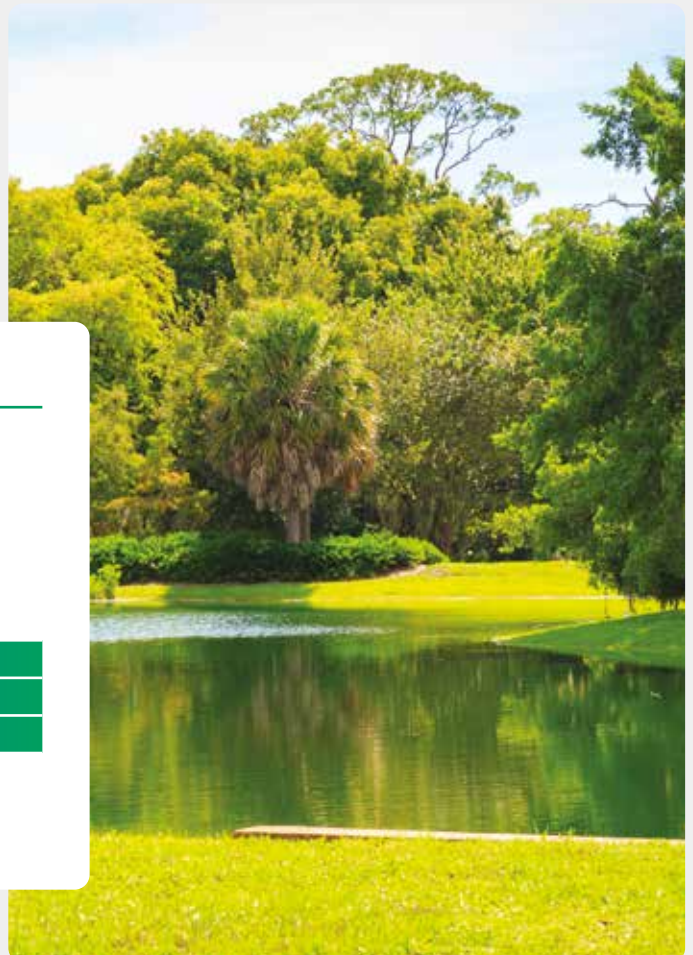
**Mowing height: 13-25mm**



# PM28

## WETLAND

Capable of withstanding prolonged wet conditions on heavy or light soils. When conditions allow the mixture can also be mown down to produce an attractive sward.



### DAMP AND WATERLOGGED SOILS

<b>10%</b>	<b>Miracle</b>	Smooth Stalked Meadow Grass
<b>20%</b>	<b>Maxima</b>	Strong Creeping Red Fescue
<b>10%</b>	<b>Esquire</b>	Perennial Ryegrass
<b>10%</b>	<b>Teno</b>	Small Leaved Timothy
<b>10%</b>		Crested Dogstail
<b>40%</b>	<b>Essential</b>	Tall Fescue

**Sowing rate: 25-35g/m<sup>2</sup>**

**Overseeding: 25g/m<sup>2</sup>**

**Mowing height: as required**



# PM29

## ALL SEASON

The All Season mixture takes advantage of the significant advances DLF have made in the breeding of turf type tall fescues with regard to fineness of leaf and shoot density, providing an attractive, hard wearing, low maintenance alternative to ryegrass mixtures. Tall fescue has roots which will penetrate the root zone to depths of over 1m, the mix will cope with extremes of heat, drought and occasional waterlogging.

### DROUGHT TOLERANCE

25%	<b>Debussy</b>	Tall Fescue
75%	<b>Essential</b>	Tall Fescue

**Sowing rate:** 25-35g/m<sup>2</sup>

**Overseeding:** 25g/m<sup>2</sup>

**Mowing height:** down to 10mm

**GroMax** treated



# PM35

## UNIVERSAL

This mixture incorporating high quality turf type perennial ryegrass cultivars gives fast establishment, strong soil binding characteristics, fine dense appearance and high close mown wear tolerance. A versatile mix suitable for any close mown situation under wear.



### CRICKET SQUARES, TEES AND TENNIS COURTS

35%	<b>Claudine</b>	Perennial Ryegrass
35%	<b>Chardin</b>	Perennial Ryegrass
10%	<b>Absolom</b>	Slender Creeping Red Fescue
20%	<b>Sarolea</b>	Slender Creeping Red Fescue

**Sowing rate:** 35-50g/m<sup>2</sup>

**Overseeding:** 25-50g/m<sup>2</sup>

**Mowing height:** down to 5mm

**GroMax** treated



# PM36

## WICKET



The combination of these highly rated close mown cultivars, gives excellent performance with regard to speed of establishment, density and resistance to wear, under close mown conditions.

### CRICKET WICKET, TENNIS AND TEES RENOVATION

50%	<b>Chardin</b>	Perennial Ryegrass
30%	<b>Chloe</b>	Perennial Ryegrass
10%	<b>Monroe</b>	Perennial Ryegrass
10%	<b>Claudine</b>	Perennial Ryegrass

**Sowing rate: 35-75g/m<sup>2</sup>**

**Overseeding: 25-75g/m<sup>2</sup>**

**Mowing height: down to 5mm**

**GroMax** treated



# PM40

## TEE AND FAIRWAY



A traditional 100% fescue fairway mixture which delivers a fine dense playing surface with improved drought tolerance and disease resistance under a sustainable management program. Now benefitting from top rated Rossinante strong creeping red fescue with unparalleled shoot density and visual merit, and Dumas hard fescue for increased drought and disease tolerance.

### TEES, FAIRWAYS AND CRICKET OUTFIELDS (WITHOUT RYEGRASS)

25%	<b>Sergei</b>	Strong Creeping Red Fescue
20%	<b>Rossinante</b>	Strong Creeping Red Fescue
20%	<b>Absolom</b>	Slender Creeping Red Fescue
20%	<b>Wagner</b>	Chewings Fescue
10%	<b>Highnote</b>	Chewings Fescue
5%	<b>Dumas</b>	Hard Fescue

**Sowing rate: 35-50g/m<sup>2</sup>**

**Overseeding: 15-25g/m<sup>2</sup>**

**Mowing height: down to 12mm**

**GroMax** treated



# PM45

## TEE AND FAIRWAY PLUS



An excellent mixture for the rapid renovation of tees and fairways. The addition of Chardin perennial ryegrass, combined with fine fescues, ensures a dense, hard wearing surface which repairs easily from divoting. Now benefitting from top rated Sergei strong creeping red fescue with unparalleled shoot density and visual merit.

### TEES, FAIRWAYS, CRICKET OUTFIELDS AND DRIVING RANGES (WITH RYEGRASS)

35%	<b>Chardin</b>	Perennial Ryegrass
35%	<b>Sergei</b>	Strong Creeping Red Fescue
20%	<b>Highnote</b>	Chewings Fescue
10%	<b>Absolom</b>	Slender Creeping Red Fescue

**Sowing rate:** 35-50g/m<sup>2</sup>

**Overseeding:** 15-25g/m<sup>2</sup>

**Mowing height:** down to 12mm

**GroMax** treated



# PM50

## QUALITY LAWN



An excellent mixture, fine in appearance and hard wearing with excellent colour. The improved new cultivars ensure, a shade tolerant, low maintenance turf, with good disease resistance, keeping future maintenance costs to the minimum. The inclusion of our unique 4turf® tetraploid ryegrass Fabian deliver fast establishment, improved colour, increased drought tolerance and incredible disease resistance. A very successful mixture for both private and local authority use, on housing and industrial developments where a high quality and durable turf is called for.

### HIGH QUALITY HARD WEARING LAWN

10%	<b>Fabian</b>	4turf® Tetraploid Perennial Ryegrass
20%	<b>Claudine</b>	Perennial Ryegrass
10%	<b>Chloe</b>	Perennial Ryegrass
40%	<b>Sergei</b>	Strong Creeping Red Fescue
10%	<b>Wagner</b>	Chewings Fescue
10%	<b>Pinafore</b>	Slender Creeping Red Fescue

**Sowing rate:** 35-50g/m<sup>2</sup>

**Overseeding:** 15-25g/m<sup>2</sup>

**Mowing height:** down to 10mm

**GroMax** treated

**4turf®**  
by DLF



# PM51

## GREENSCAPE



A hard wearing mixture that will establish rapidly. Ideal for general purpose landscaping and lawns. Our unique Double 4turf® Tetraploid ryegrass delivers fast establishment, improved colour, increased drought tolerance and incredible disease resistance. Improved performance and reduced management costs.  
**Contains only STRI UK listed cultivars.**

### HARD WEARING LAWNS (WITH RYEGRASS)

20%	<b>Double</b>	4turf® Tetraploid Perennial Ryegrass
20%	<b>Esquire</b>	Perennial Ryegrass
60%	<b>Maxima</b>	Strong Creeping Red Fescue

**Sowing rate:** 35-50g/m<sup>2</sup>

**Overseeding:** 25-50g/m<sup>2</sup>

**Mowing height:** down to 13mm

**GroMax** treated

**4turf®**  
by DLF



# PM52

## FINE LAWNS (WITHOUT RYEGRASS)

An economical, fine textured mixture, containing both chewings and slender creeping red fescue reduces maintenance, suitable for landscaping and lawns.  
**Contains only STRI UK listed cultivars.**

### FINE LAWNS (WITHOUT RYEGRASS)

20%	<b>Wagner</b>	Chewings Fescue
30%	<b>Pinafore</b>	Slender Creeping Red Fescue
50%	<b>Maxima</b>	Strong Creeping Red Fescue

**Sowing rate:** 35-50g/m<sup>2</sup>

**Overseeding:** 25-50g/m<sup>2</sup>

**Mowing height:** down to 13mm

**GroMax** treated



# PM60

## GREENSHADE



A top quality mixture designed to produce an excellent wear tolerant turf under shaded conditions. Sabrena 1 rough stalked meadow grass germinates rapidly, providing an exceptionally fine, dense, green growth year round. To ensure successful results, do not mow too closely and feed regularly.



### SHADED CONDITIONS (WITHOUT RYEGRASS)

10%	<b>Sabrena 1</b>	Rough Stalked Meadow Grass
30%	<b>Wagner</b>	Chewings Fescue
20%	<b>Pinafore</b>	Slender Creeping Red Fescue
40%	<b>Sergei</b>	Strong Creeping Red Fescue

**Sowing rate:** 35-50g/m<sup>2</sup>

**Overseeding:** 25-50g/m<sup>2</sup>

**Mowing height:** down to 25mm

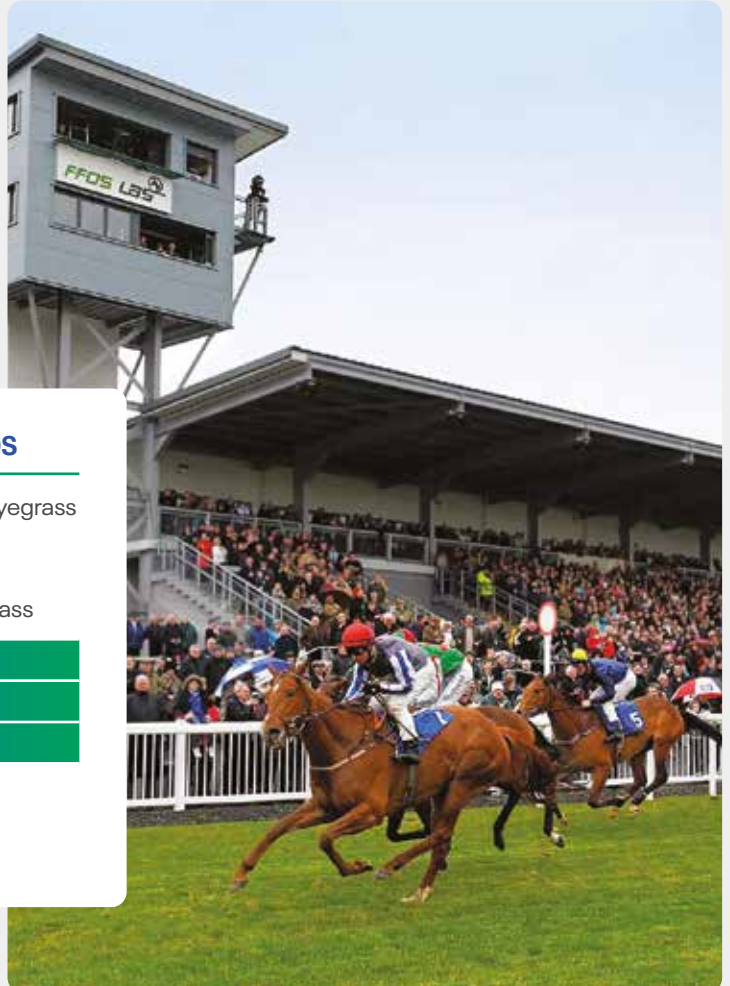
**GroMax** treated

# PM65

## HEAVY WEAR



This mixture is designed for new courses/grounds and end of season renovation. The deeper root system, improved colour and incredible disease resistance of Tetragame 4turf® tetraploid ryegrass combined with the improved wear tolerance of the diploid ryegrasses deliver a high performance turf.



### WINTER SPORTS, RACE COURSES AND POLO GROUNDS

30%	<b>Tetragame</b>	4turf® Tetraploid Perennial Ryegrass
30%	<b>Columbine</b>	Perennial Ryegrass
30%	<b>Monroe</b>	Perennial Ryegrass
10%	<b>Yvette</b>	Smooth Stalked Meadow Grass

**Sowing rate:** 35-50g/m<sup>2</sup>

**Overseeding:** 25-50g/m<sup>2</sup>

**Mowing height:** 75-100mm

**GroMax** treated

**4turf®**  
by DLF

# PM70

## RECREATION

A versatile mixture that will produce a very hard wearing sward with a high shoot density suitable for winter and summer games. The introduction of unique 4turf® tetraploid ryegrass delivers the fastest possible establishment, especially important for the rapid renovation of worn turf, plus improved disease resistance and improved drought tolerance thanks to the deeper root system. The perfect mixture to bring your venue back to life following that summer tournament or festival.

### SPORTS FIELDS, TEES AND FAIRWAYS AND HARD WEARING LANDSCAPE TURF

10%	<b>Tetragame</b>	4turf® Tetraploid Perennial Ryegrass
25%	<b>Double</b>	4turf® Tetraploid Perennial Ryegrass
25%	<b>Esquire</b>	Perennial Ryegrass
10%	<b>Chardin</b>	Perennial Ryegrass
30%	<b>Sergei</b>	Strong Creeping Red Fescue

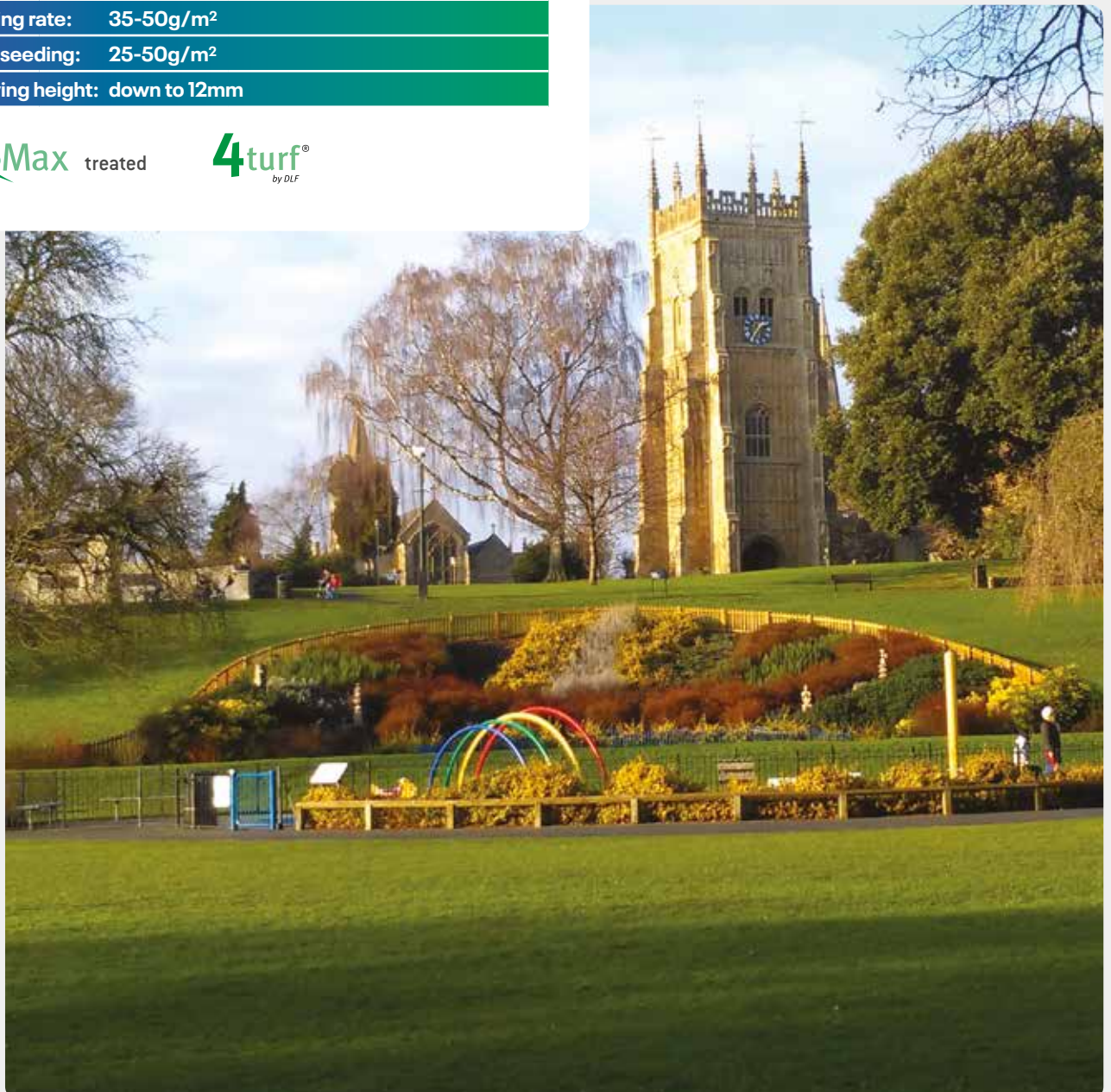
**Sowing rate:** 35-50g/m<sup>2</sup>

**Overseeding:** 25-50g/m<sup>2</sup>

**Mowing height:** down to 12mm

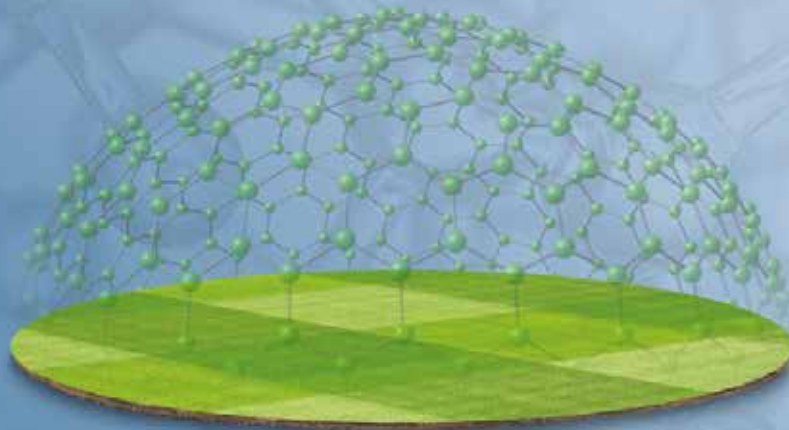
**GroMax** treated

**4turf®**  
by DLF



# DISEASE WATCH BY DLF

Safeguard your turf by choice  
- not by chance



As climate change brings more hot and humid weather, the severity and geographic range of fungal diseases are increasing. Disease control has become a greater challenge for many turf managers as they seek to reduce pesticide use. Diseases pose a significant threat to the health and vitality of turfgrass, affecting both the visual appearance and its ability to withstand environmental stresses and maintain optimal functionality.

At DLF, we're committed to developing pioneering management solutions for turf managers utilising the knowledge and expertise of our global research network. As part of this, we have implemented an industry-leading 'Disease Watch' programme. By gathering input across Europe, we can monitor and understand the shifting disease landscape. Utilising this information, we develop screening programs to assess the disease resistance in our grass portfolio.

Based on this, we can create mixtures with the broadest resistance – designed to make the safeguarding of your turf a proactive choice and give turf managers increased peace of mind. Specifically, under the spotlight has been brown patch and grey leaf spot. Both diseases cause serious problems on

football stadiums around Europe, especially during the renovation phase where they attack young seedlings. By conducting these screenings, we have been able to identify the varieties with the broadest disease resistance.

Safeguard your turf health by choice, not by chance with DLF.



## DID YOU KNOW THAT..

Each year, DLF conducts a survey to gather end-user input regarding the challenges they are facing in terms of turf diseases? The input is used to create solutions that meet the needs of turf managers.



# BROWN-PATCH RESISTANT VARIETIES FROM DLF

Choosing varieties with high brown patch resistance gives you better pitch quality, more playing hours and a reduced reliance on fungicides. 4turf® varieties and several outstanding diploid varieties have proven to be highly resistant to brown patch.

Brown patch is becoming more common across Europe. The disease tends to occur during hot, moist summers, where it causes severe damage and dramatic reductions in pitch quality. In the worst cases, it can lead to the loss of an entire pitch.



↗ Brown-patch attack in a newly established perennial ryegrass pitch

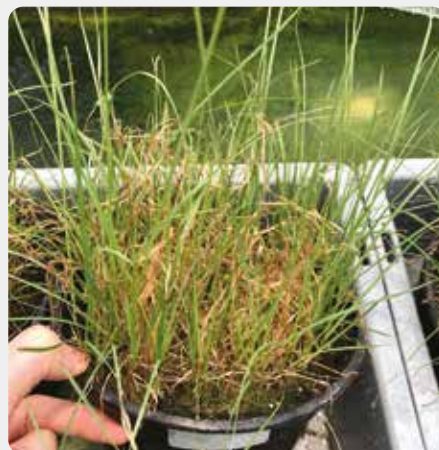


## WHAT IS BROWN PATCH?

Brown patch is a turfgrass foliar disease caused by *Rhizoctonia* spp. The fungus can attack all cool season turfgrasses, but is most devastating to perennial ryegrass, bentgrass and tall fescue. Attacks are triggered by hot, humid conditions especially if the turf has been overstimulated with nitrogen.



↗ High disease resistance



↗ Average disease resistance

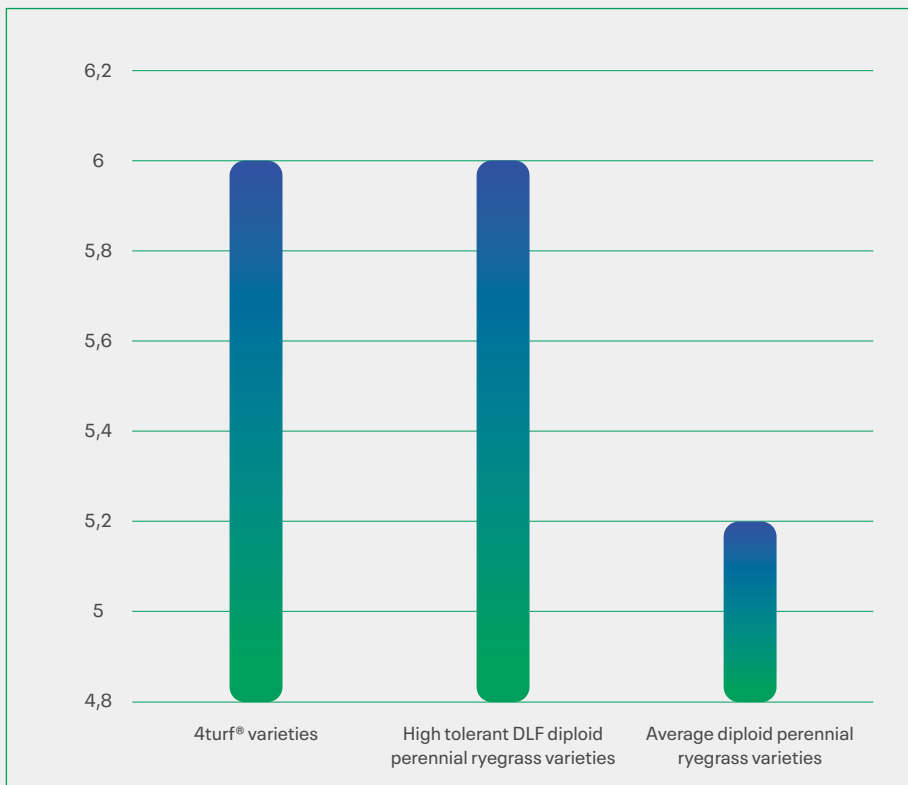


↗ Low disease resistance

# UNIQUE SCREENING FACILITY



## AVERAGE BROWN-PATCH RESISTANCE SCORE



DLF has developed a unique greenhouse screening method to identify the most brown patch-resistant perennial ryegrass varieties. Within the greenhouse, our scientists test turf varieties against a highly virulent fungal isolate. The results of these screenings show significant differences in levels of brown patch resistance between perennial ryegrass varieties. 4turf® varieties are significantly more resistant to brown patch than most diploid perennial ryegrasses. In addition, we have identified a range of outstanding diploid perennial ryegrass varieties with high resistance. To reduce the risk of fungal attack and safeguard your turf against brown patch, choose varieties in your mixture with a proven resistance to the disease.

# GREY LEAF SPOT RESISTANT VARIETIES

Grey Leaf Spot (GLS) resistant varieties from DLF give you peace of mind and ensures that the chances of GLS attack are significantly minimised. During the last couple of years, we have seen an increased number of GLS incidents. GLS has been discovered in different locations across southern and central Europe, known to cause significant damage to stadium pitches.

## EXTENSIVE GREY LEAF SPOT SCREENING

DLF have conducted comprehensive GLS screening. Our rigorous assessment span three distinct locations: France, South America, and USA. The screening in France was done by CIRAD, an independent research institute. This multi-location approach, along with a diverse array of genetically different fungal isolates, provided us with a deeper understanding of GLS dynamics.

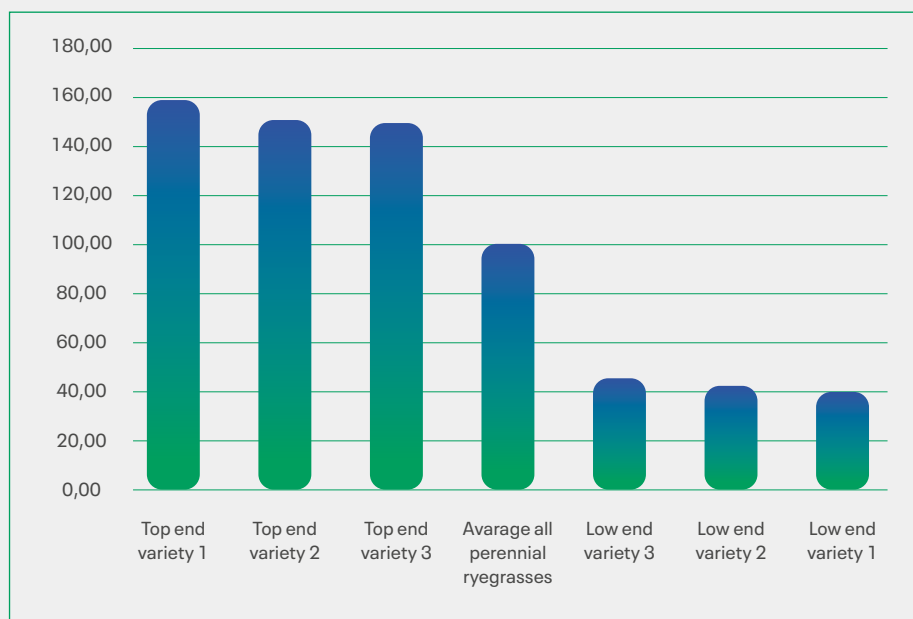
The results highlighted top performing diploid and 4turf® varieties.



### WHAT IS GREY LEAF SPOT?

Grey leaf spot is caused by the fungus *Pyricularia oryzae*. It is known to attack both cool and warm season grasses, primarily perennial ryegrass and tall fescue where seedlings up to 5 weeks are especially susceptible. The risk of infection is greater when the temperature and humidity is high and, in worst case scenarios, extensive blighting of the turfgrass and thin, weakened turf will result.

## GLS RESISTANCE SCORE AMONG PERENNIAL RYEGRASSES FROM DLF



With such a broad variety of fungal genotypes posing a significant threat to your turf, using mixtures with varieties proven to have high overall disease resistance, tested against several strains with different pathogenicity, is critical. This will help to retain a better quality pitch that can withstand the pressure of more playing hours with a reduced need for chemical inputs.

Our commitment to precision means that we can present you with the most GLS-resistant varieties from our portfolio. By subjecting grasses to rigorous testing against virulent fungal isolates, we provide turf managers with invaluable insights into disease-resistant varieties. To find out more about the screening speak to your local DLF representative.

# PM79

## PLAYING FIELD



The introduction of Double 4turf® tetraploid ryegrass from DLF delivers fast establishment, improved colour, drought tolerance, nitrogen efficiency and incredible disease resistance! A good quality, economical sports field renovation mixture.

**Contains only STRI UK listed cultivars. Delivers great results & value.**

### SPORTS FIELD RENOVATION

40%	<b>Double</b>	4turf® Tetraploid Perennial Ryegrass
40%	<b>Esquire</b>	Perennial Ryegrass
20%	<b>Cleopatra</b>	Perennial Ryegrass

**Sowing rate: 35-75g/m<sup>2</sup>**

**Overseeding: 25-75g/m<sup>2</sup>**

**Mowing height: down to 25mm**

**GroMax** treated

**4turf®**  
by DLF



# PM80

## RENOVATOR



An ideal mixture for the renovation of worn playing surfaces. Tetragame 4turf® tetraploid ryegrass introduces the latest genetics from DLF ensuring that PM 80 will establish rapidly with improved colour, drought tolerance, nitrogen efficiency and incredible disease resistance! The inclusion of Chardin perennial ryegrass provides excellent colour and shoot density. An ideal mixture for the renovation of worn playing surfaces.

### SPORTS FIELD RENOVATION

25%	<b>Tetragame</b>	4turf® Tetraploid Perennial Ryegrass
25%	<b>Chardin</b>	Perennial Ryegrass
30%	<b>Cleopatra</b>	Perennial Ryegrass
20%	<b>Columbine</b>	Perennial Ryegrass

Sowing rate: 35-75g/m<sup>2</sup>

Overseeding: 25-75g/m<sup>2</sup>

Mowing height: down to 25mm

**GroMax** treated

**4turf**  
by DLF



# PM81

## PREMIER RENOVATION



PM 81 4turf® incorporating top rated Gildara perennial ryegrass gives unrivalled sward density and wear tolerance PM 81 will establish rapidly with improved colour, drought tolerance, nitrogen efficiency and incredible disease resistance! A mixture suitable for new builds and the renovation of top performance winter sports pitches.

### SPORTS FIELD RENOVATION

30%	<b>Columbine</b>	Perennial Ryegrass
30%	<b>Eurodiamond</b>	Perennial Ryegrass
20%	<b>Europitch</b>	Perennial Ryegrass
20%	<b>Gildara</b>	Perennial Ryegrass

**Sowing rate: 35-75g/m<sup>2</sup>**

**Overseeding: 25-75g/m<sup>2</sup>**

**Mowing height: down to 25mm**

**GroMax** treated

# PM81

## 4TURF® PREMIER RENOVATION



PM 81 4turf® incorporating top rated Gildara perennial ryegrass gives unrivalled sward density and wear tolerance. Fabian & Tetragame 4turf® tetraploid ryegrass introduces the latest genetics from DLF ensuring that PM 81 will establish rapidly with improved colour, drought tolerance, nitrogen efficiency and incredible disease resistance! A mixture suitable for new builds and the renovation of top performance winter sports pitches.

### SPORTS FIELD RENOVATION

10%	<b>Tetragame</b>	4turf® Tetraploid Perennial Ryegrass
10%	<b>Fabian</b>	4turf® Tetraploid Perennial Ryegrass
30%	<b>Eurodiamond</b>	Perennial Ryegrass
10%	<b>Europitch</b>	Perennial Ryegrass
20%	<b>Gildara</b>	Perennial Ryegrass
20%	<b>Columbine</b>	Perennial Ryegrass

**Sowing rate: 35-75g/m<sup>2</sup>**

**Overseeding: 25-75g/m<sup>2</sup>**

**Mowing height: down to 25mm**

**GroMax** treated

**4turf®**  
by DLF



# PM82

## MICROCLOVER SPORT



Microclover Sport has been developed to improve turf quality and be kind to the environment through reduced herbicide, fertiliser use and lower carbon footprint. The Microclover is able to fix free nitrogen from the atmosphere. In independent trials Microclover Sport is proven to produce a sward with increased wear tolerance, disease resistance, colour and a higher visual merit, especially in drought or other high stress environments.

### SPORTS AND PLAYING FIELDS, REDUCED INPUT COSTS

30%	<b>Cleopatra</b>	Perennial Ryegrass
40%	<b>Double</b>	4turf® Tetraploid Perennial Ryegrass
25%	<b>Esquire</b>	Perennial Ryegrass
5%		Microclover

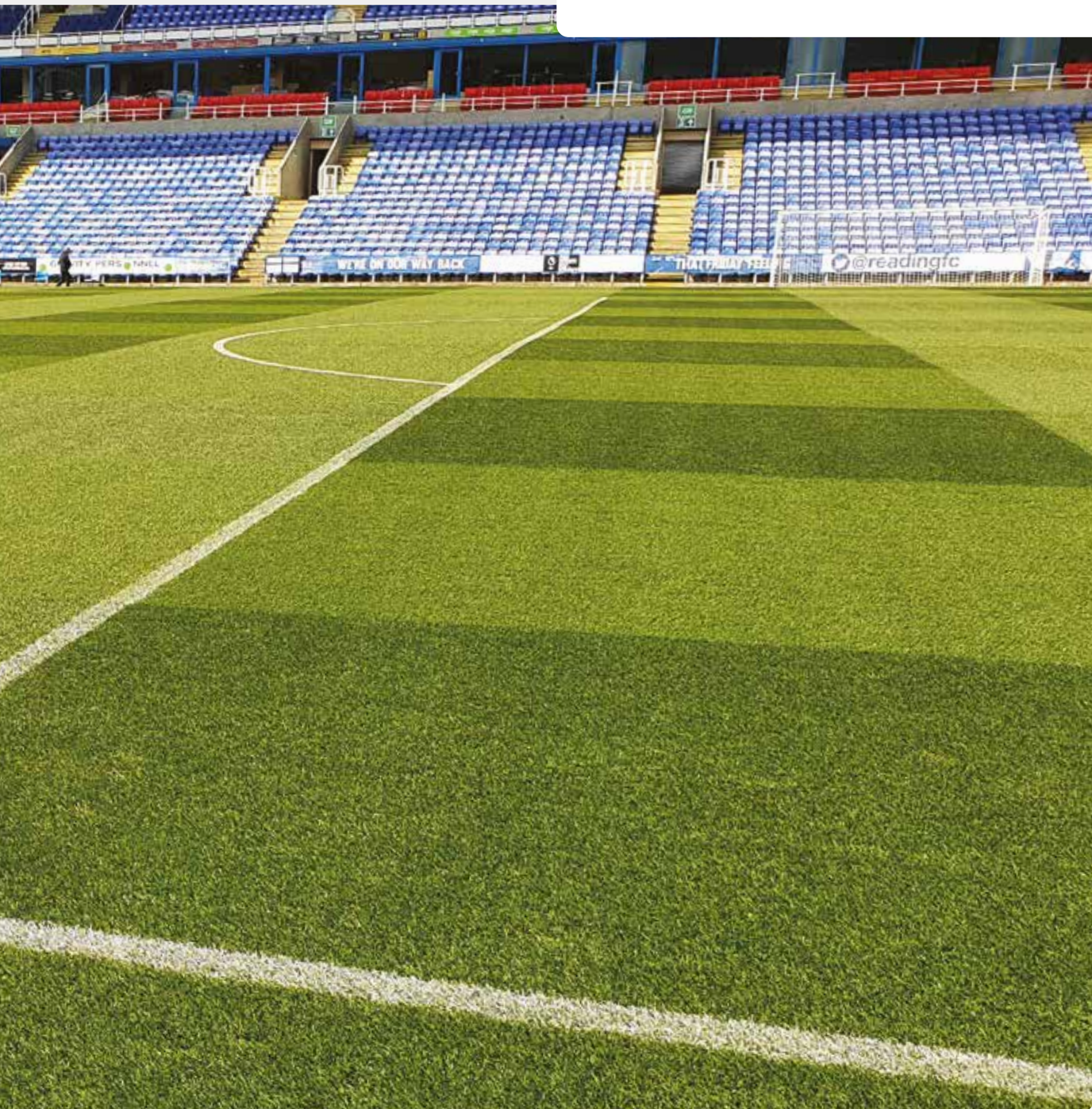
**Sowing rate:** 25-50g/m<sup>2</sup>

**Overseeding:** 15-50g/m<sup>2</sup>

**Mowing height:** down to 25mm

**GroMax** treated

**4turf®**  
by DLF

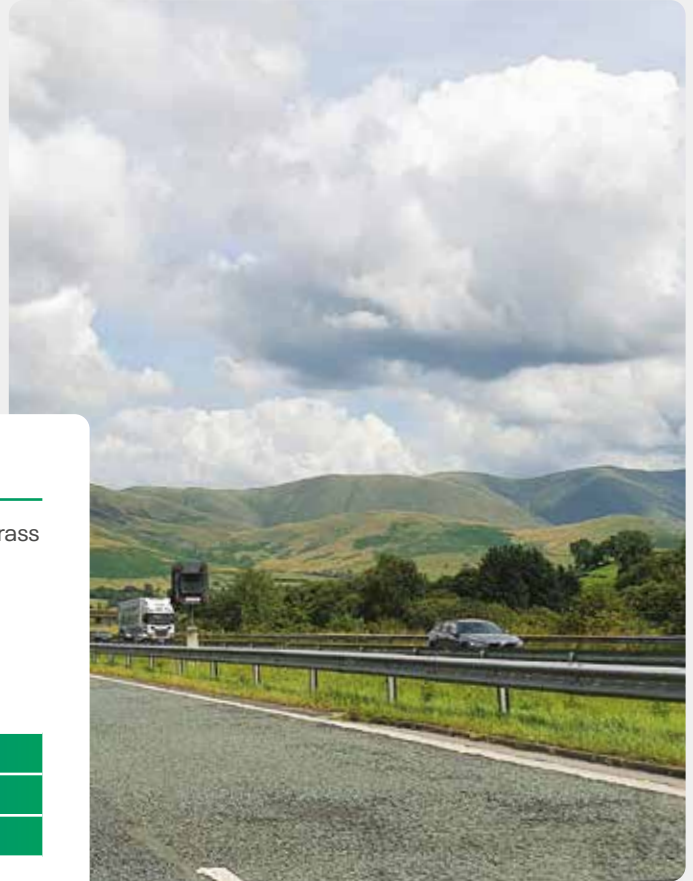


# PM85

## ROAD VERGE



This mixture is ideally suited for road verges where the soil may not be of the best quality and where quick establishment, short growth, and some salt and exhaust fume tolerance are called for. 4turf® perennial ryegrass ensures fast establishment, deeper rooting, improved drought tolerance and nitrogen efficiency. 4turf® perennial ryegrass also provides the perfect nurse crop. The inclusion of Pinafore slender creeping red fescue increases the mixture's tolerance to salinity.



### ROAD VERGES

25%	<b>Double</b>	4turf® Tetraploid Perennial Ryegrass
40%	<b>Maxima</b>	Strong Creeping Red Fescue
15%	<b>Pinafore</b>	Slender Creeping Red Fescue
15%	<b>Dumas</b>	Hard Fescue
2.5%	<b>Jorvik</b>	Browntop Bent
2.5%	<b>Rivendel</b>	Small White Clover

**Sowing rate: 10-20g/m<sup>2</sup>**

**Overseeding: 10g/m<sup>2</sup>**

**Mowing height: as necessary or twice/year to 75-100mm**

**GroMax** treated

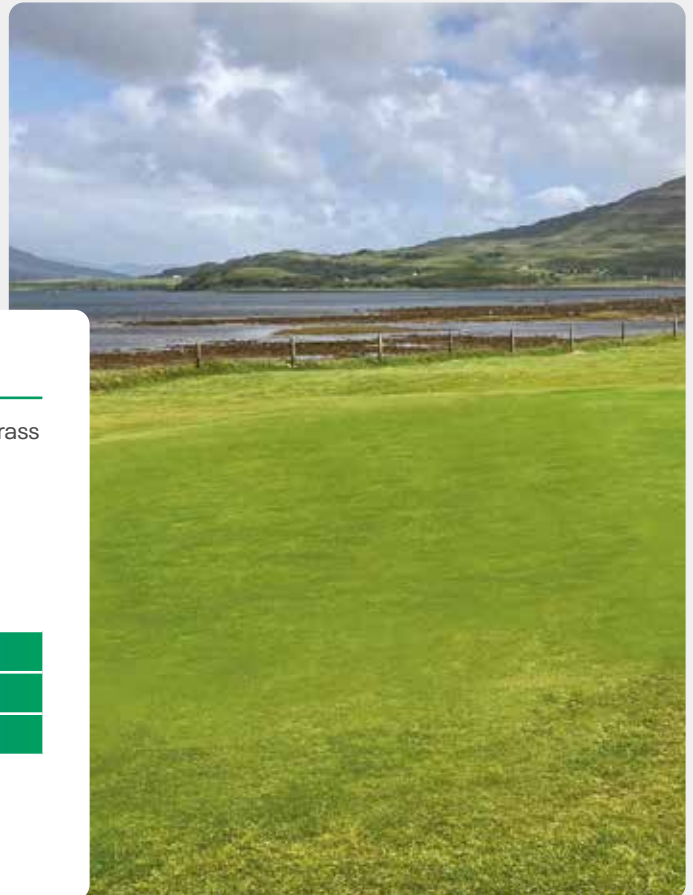
**4turf®**  
by DLF

# PM90

## COASTAL



The protection of our coastline is of paramount importance and the above mix is versatile enough to suit both flat and sloping aspects, able to produce a sward tolerant of salt laden winds. Double 4turf® tetraploid ryegrass is used for its rapid establishment and improved salt tolerance over standard diploid amenity rye grasses.



### COASTAL SITES

20%	<b>Double</b>	4turf® Tetraploid Perennial Ryegrass
25%	<b>Pinafore</b>	Slender Creeping Red Fescue
22%	<b>Maxima</b>	Strong Creeping Red Fescue
20%	<b>Dumas</b>	Hard Fescue
10%		Saltmarsh Grass
3%	<b>Kromi</b>	Creeping Bent

**Sowing rate: 35g/m<sup>2</sup>**

**Overseeding: 25g/m<sup>2</sup>**

**Mowing height: down to 12mm**

**GroMax** treated

**4turf®**  
by DLF

# PM95

## WITH RYE



Land reclamation mixture suitable for landfill/quarry sites and soil heaps. The cultivars chosen represent the best that are commercially available. The perennial ryegrass will establish quickly and act as a nurse crop whilst the broad range of adaptable low maintenance species provide excellent tolerance to environmental stresses.



### LAND RECLAMATION INFERTILE, DROUGHT, ACID TO ALKALINE

30%	<b>Double</b>	4turf® Tetraploid Perennial Ryegrass
25%	<b>Pinafore</b>	Slender Creeping Red Fescue
20%	<b>Dumas</b>	Hard Fescue
10%		Crested Dogstail
10%	<b>Jorvik</b>	Browntop Bent
2.5%		Small Leaved White Clover
2.5%		Birdsfoot Trefoil

**Sowing rate:** 10-20g/m<sup>2</sup>

**Overseeding:** 10g/m<sup>2</sup>

**Mowing height:** versatile, light grazing or mow as required down to 75mm

**GroMax** treated

**4turf**<sup>®</sup>  
by DLF

# PM105

## FERTILITY

PM 105 Pioneer mixture is ideally suited to land reclamation sites where short term cover is required or where fertility and soil structure needs to be improved.



### FERTILITY BUILDING PIONEER MIX

15%	Alsike White Clover
15%	Red Clover
25%	White Clover
20%	Yellow Trefoil
25%	Birdsfoot Trefoil

**Sowing rate:** 5g/m<sup>2</sup>

**GroMax** treated

# PRO FLORA 110

## FLORASCAPE

This mix contains a wide range of wild flowers, formulated to meet a demand for creating an economical, floristically diverse sward.

For full specification see Pro Flora section - page 60.

### LOW MAINTENANCE LANDSCAPE WITH WILD FLORA

5%	Browntop Bent
19%	Crested Dogstail
19%	Chewings Fescue
19%	Hard Fescue
9%	Smooth Stalked Meadow Grass
24%	Strong Creeping Red Fescue
5%	Wild Flora

**Sowing rate: 5-8g/m<sup>2</sup>, 50-80kg/ha**

**Mowing height: once or twice a year to no lower than 100mm**



# PM120

## SLOWGROWTH



The cultivar Claudine is the key to the mixture. Claudine has an excellent rating for slow regrowth, significantly reducing mowing costs. The new mixture is ideal for use in a variety of landscape situations, including, housing estates, road verges, parkland and play areas, establishing rapidly to provide a dense and attractive reduced maintenance surface.

### LANDSCAPE, PARKLAND AND PLAY AREAS

60%	<b>Claudine</b>	Perennial Ryegrass
35%	<b>Pinafore</b>	Slender Creeping Red Fescue
5%	<b>Jorvik</b>	Browntop Bent

**Sowing rate: 35-50g/m<sup>2</sup>**

**Overseeding: 25g/m<sup>2</sup>**

**Mowing height: 12-50mm as necessary**

**GroMax** treated



# PM125

## CLEARSKY

Authorities responsible for the safety of aircraft have been concerned with the danger of damage caused by aircraft striking birds while in flight. Methods of reducing this have been sought, which has brought about the introduction of "Long Grass Management". Tall fescue was found to be the most suitable species for a long grass policy due to its erect stiff habit of growth. It is a highly persistent, frost and drought resistant species, and when managed at an optimum mown height of 150mm, the most suited to long grass management. New turf type annual ryegrass Quickston provides the quickest germination and groundcover, and acts a nurse crop for the Tall fescue.

### AIRPORT LANDSCAPE AND BIRD STRIKE MIX

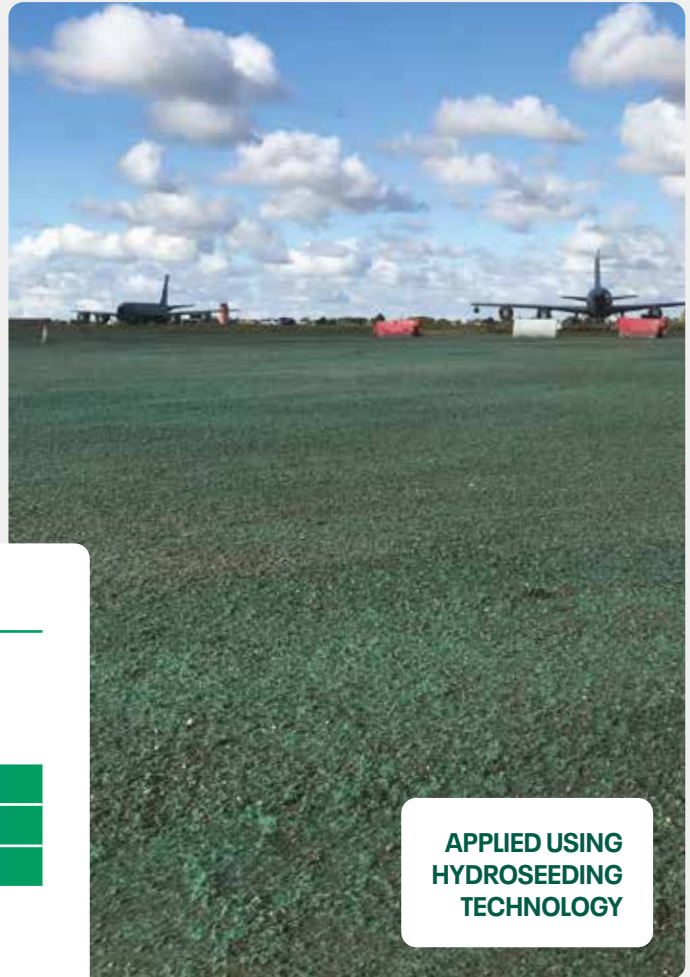
20%	<b>Debussy</b>	Tall Fescue
75%	<b>Essential</b>	Tall Fescue
5%	<b>Quickston</b>	Annual Ryegrass

Sowing rate: 20g/m<sup>2</sup>

Overseeding: 10g/m<sup>2</sup>

Mowing height: 150mm optimum height requirement

**GroMax** treated



APPLIED USING  
HYDROSEEDING  
TECHNOLOGY

# HORSEMAX

## Paddock

Long term horse grazing with an option to produce a quality hay crop. HorseMax Paddock is designed using diploid Perennial Ryegrasses, Timothy and Creeping Red Fescue. Sward density is a key consideration as both grazing and winter feed are often produced from the same area. Timothy is much favoured by horses and in particular gives hay a sweet smell and is very palatable. Creeping Red Fescue is key to binding the sward together and because of its growth habit quickly repairs the turf when damaged by hooves.

### Paddock, Grazing Mix

15%	<b>Agaska</b>	Intermediate Perennial Ryegrass
30%	<b>Nifty</b>	Intermediate Perennial Ryegrass
25%	<b>Swan</b>	Late Perennial Ryegrass
20%	<b>Maxima</b>	Creeping Red Fescue
10%	<b>Comer</b>	Timothy

Pack size: 10kg bag (37 - 50kg/Ha)

**GroMax** treated



# PRO TURF 1

## (WITH RYE)

The inclusion of Fabian 4turf® tetraploid ryegrass introduces the latest genetics from DLF, delivering fast establishment, improved colour, drought tolerance, nitrogen efficiency and incredible disease resistance!

A top class mixture providing a high quality, hard wearing turf. The inclusion of Chardin & Chloe ryegrass combines all of the benefits associated with modern turf perennials, incredible fineness of leaf, shoot density and exceptional visual merit.



### HIGH QUALITY LANDSCAPE TURF

- 10% Chardin** Perennial Ryegrass
- 10% Chloe** Perennial Ryegrass
- 5% Fabian** 4turf® Tetraploid Perennial Ryegrass
- 35% Sergei** Strong Creeping Red Fescue
- 10% Absolom** Slender Creeping Red Fescue
- 10% Highnote** Chewings Fescue
- 20% Yvette** Smooth Stalked Meadow Grass

<b>Sowing rate:</b>	<b>25g/m<sup>2</sup></b>
<b>Mowing height:</b>	<b>down to 20mm</b>
<b>Harvest:</b>	<b>6-12 months</b>

**GroMax** coating available



# PRO TURF 2

## (WITH RYE)

The inclusion of Fabian 4turf® tetraploid ryegrass introduces the latest genetics from DLF, delivering fast establishment, improved colour, drought tolerance, nitrogen efficiency and incredible disease resistance!

A top class mixture providing a high quality, hard wearing turf. The inclusion of Chardin combines all of the benefits associated with modern turf perennials, incredible fineness of leaf and shoot density. The high proportion of creeping red fescue provides a rhizomatous root structure increasing root strength, making the resultant turf more resistant to damage when lifting.



### HIGH QUALITY LANDSCAPE TURF

- 15% Chardin** Perennial Ryegrass
- 10% Fabian** 4turf® Tetraploid Perennial Ryegrass
- 45% Sergei** Strong Creeping Red Fescue
- 20% Absolom** Slender Creeping Red Fescue
- 10% Highnote** Chewings Fescue

<b>Sowing rate:</b>	<b>25g/m<sup>2</sup></b>
<b>Mowing height:</b>	<b>down to 20mm</b>
<b>Harvest:</b>	<b>6-12 months</b>

**GroMax** coating available

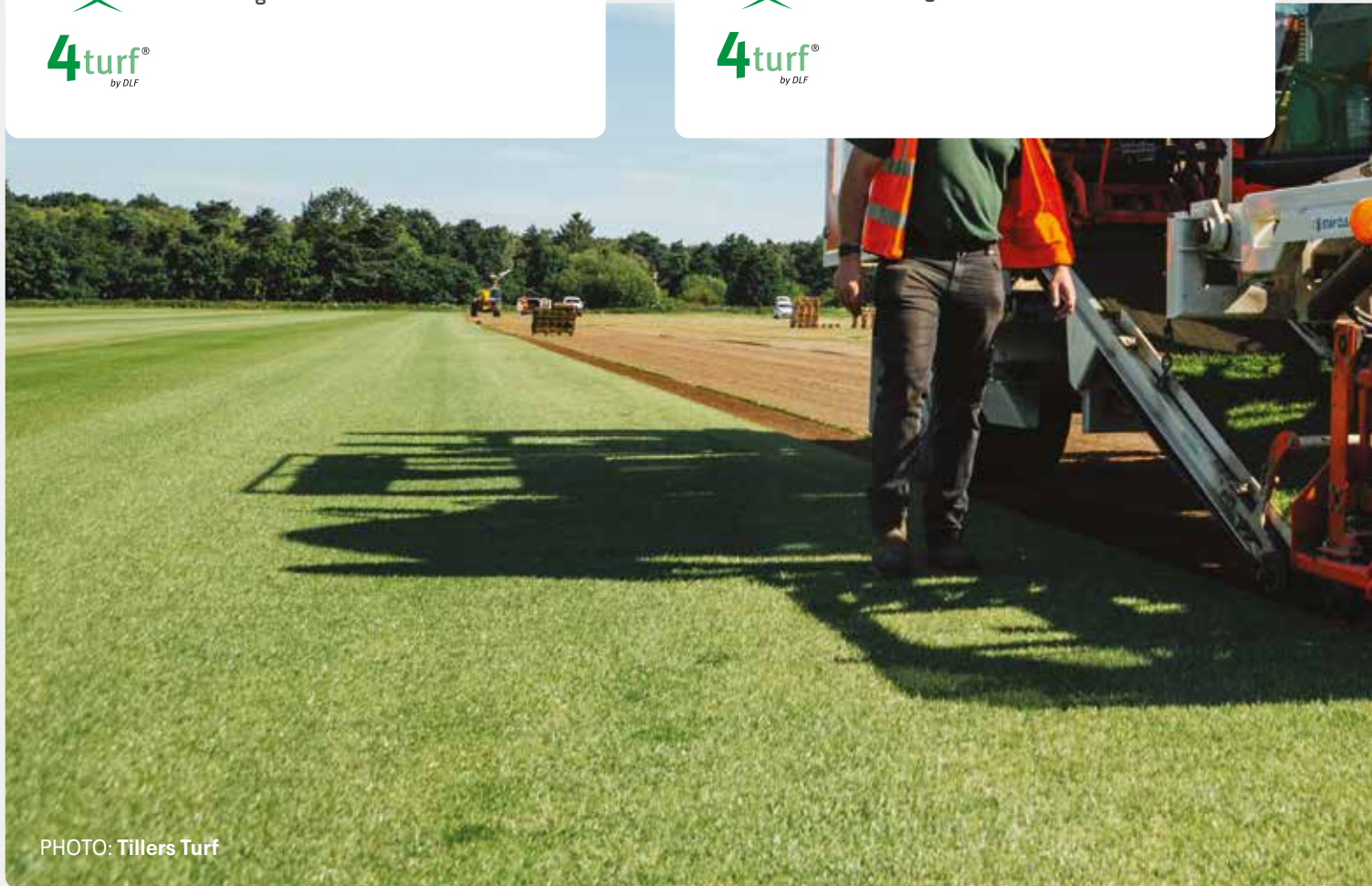


PHOTO: Tillers Turf

# PRO TURF 3

## (WITH RYE ECONOMY)

The inclusion of Double 4turf® tetraploid ryegrass introduces the latest genetics from DLF, delivering fast establishment, improved colour, drought tolerance, nitrogen efficiency and incredible disease resistance!

A good, general purpose turf mixture, which will establish quickly and provide a hardwearing landscape turf, which will not be too demanding with regard to maintenance. Tetraploid rye grass provides improved colour, drought tolerance and disease resistance.



### LANDSCAPE TURF

<b>30% Double</b>	4turf® Tetraploid Perennial Ryegrass
<b>45% Sergei</b>	Strong Creeping Red Fescue
<b>10% Absolom</b>	Slender Creeping Red Fescue
<b>15% Wagner</b>	Chewings Fescue

**Sowing rate:** 25g/m<sup>2</sup>

**Mowing height:** down to 20mm

**Harvest:** 6-12 months

**GroMax** coating available

**4turf®**  
by DLF

# PRO TURF 4

## (WITHOUT RYE)

A mixture of the best varieties ensures the production of a truly first class traditional lawn turf. An important pre requisite is a clean seed bed, free from coarse species, so that the full benefit of the short, fine varieties can be seen.



### FINE TURF

<b>25% Seroa</b>	Slender Creeping Red Fescue
<b>25% Absolom</b>	Slender Creeping Red Fescue
<b>25% Highnote</b>	Chewings Fescue
<b>25% Bogart</b>	Chewings Fescue

**Sowing rate:** 25g/m<sup>2</sup>

**Mowing height:** 15-25mm

**Harvest:** 6-12 months

**GroMax** coating available



**PURITY YOU CAN RELY ON**



# GUARANTEED SEED PURITY YOU CAN RELY ON

## THE PUREST SEED ON THE MARKET

To give you the purest seed on the market we had to set new standards of quality control – to define levels of purity that exist nowhere else.

For our most demanding level of purity – our superior quality, S-grade – we applied a tenfold increase to the standard sample size. DLF Select S-grade seed is for customers who demand the extraordinary.

Our DLF Select 00-grade gives you the highest purity and quality based on a standard seed sample of 2500 seeds. The 00 grade has 0,0% contamination of other seeds, giving you a 100% clean seed sample.

Our professional grade A offers a significant improvement in quality over standard EU-certified seed. It is free of coarse grasses and has a low level of Poa species.

## A STABLE AND RELIABLE SOURCE OF HIGH-PERFORMANCE, HIGH-PURITY TURF SEED

DLF is a world leader in the supply of high-performance seed to turf managers for whom quality and purity are essential. Our turf seed has been chosen for four of the world's most high-profile football tournaments, for international golf championships such as the Phoenix Open, and by many of the world's leading turf producers.

The market is becoming ever-more demanding as customer needs and expectations increase. A changing climate and tougher weed-control regulations make high standards of purity ever harder to achieve. DLF Select is our response to this market need. DLF Select brings stability to the high-purity seed market. You now have regular access to the highest-purity seed stocks you demand.

## QUALITY GRADES

Quality category code	Specification
S1	10x analysis 0 other seeds
S2	10x analysis 0 Poa trivialis Max TR* Poa annua 0 coarse grasses
00	Standard purity analysis 0,0% other seeds
00X	Standard purity analysis Max 0,5% Vulpia sp. 0,0% other seed
A1	Standard purity analysis Max 0,5% Vulpia sp. Max 0,1% other seeds Max TR Poa annua 0,0% Poa trivialis 0,0% coarse grasses
A2	Standard purity analysis Max 0,5% Vulpia sp. Max 0,2% other seeds Max 0,1% Poa annua + Poa trivialis 0,0% coarse grasses
EU	According to EU rules and standards



\* The exact number of seeds accepted must be agreed upon between customer and DLF



**1 PLANNING**

From sowing of field to harvesting seed takes up to two years. So we plan each season's production two years ahead. Through early planning of varieties and quantities – and by working closely with customers – we ensure the availability of pure seed.



**2 SELECTED GROWERS**

Preparing weed-free fields for production of DLF Select involves weed control in the years before production starts. For DLF Select we choose our most experienced growers who devote their cleanest fields to the growing of the purest crops.



**3 FIELD MANAGEMENT**

Our growers need exceptional field-management skills to grow a crop of DLF Select seeds. The fields require constant and careful monitoring and flawless weed control. Naturally we pay our growers well to compensate for the extra time and effort they put in.



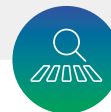
**6 SEPARATE STORAGE**

DLF Select seed is stored separately from other seed at the farm, and clearly marked to make it easily identifiable when we bring it in for cleaning.



**5 HARVEST**

As harvest approaches, our field consultants and the growers inspect the fields. If they find weeds or other grasses in the field or along the borders, they isolate these areas from the rest of the harvest. When the harvesters move in, they collect only clean seed.



**4 DLF INSPECTION**

During the growing season, our DLF field consultants join the growers on their field inspections. They offer advice on growth and treatments.



**7 SPECIALISED CLEANING LINES**

Specialised cleaning lines ensure optimal cleaning. If any weed seed or other grass seeds are found, they are cleaned out at this stage.



**8 TRAINED CLEANING OPERATORS**

Trained cleaning operators monitor the cleaning process to make sure all impurities are cleaned out.



**9 ANALYSIS**

The cleaned seed lot is analysed and labelled with the appropriate quality grade.



**12 READY TO BE SHIPPED**

Each bag of DLF Select seeds gets its own distinctive DLF Select sticker, ready for shipment to our customers.



**11 PACKAGING**

Batches of super-clean DLF Select seeds are bagged, labelled, and stored at our warehouse.



**10 CAMERAS**

To improve the process, we have cameras by the cleaning lines to analyse seed samples. If they spot contaminants we adjust the machines to keep only clean seed in the box.

# WILD FLORA

## Wildflower mixtures suitable for amenity landscaping and habitat recreation

In order to meet with the increasing demand for conservation mixtures we have formulated eighteen seed mixtures, each designed to recreate a site specific habitat.



# IN-HOUSE PRODUCTION FOR NATIVE ORIGIN WILD FLOWERS FROM DLF

In order to meet with the increasing demand for conservation mixtures, DLF have formulated the Pro Flora range of high quality wild flower mixtures, each designed to recreate a particular habitat – including wetland or dry grassland mixtures, and mixtures composed specifically for acid soils, coastal areas and shaded spots.

### BRINGING WILD FLOWER PRODUCTION BACK TO INKBERROW

DLF have recently moved their wildflower production to their UK head office in Inkberrow. This move back to head office means all aspects of the business including production, sales and mixing facilities have been connected – all while offering an impressive facility for customers to come and visit. Overseeing the in-house production is Wildflower Production Manager, Klaas Vincent Broersma and Wild Flower Assistant Manager Charlie Bex.



### SCALING PRODUCTION WITHOUT COMPROMISING QUALITY

Continual investments in equipment, seed cleaning equipment and seed storage have allowed DLF to scale up to **30 hectares** of wild flower seed production at Inkberrow, with close to **50 different species** grown on site. This ensures DLF can continue to produce the cleanest and highest quality seed mixtures.

### SEED TRACEABILITY AND WILD GENETICS

Seed traceability, seed purity and seed viability remain key focus points for production. To ensure traceability and keep the wildflowers as close to their wild origins as possible, DLF collect seed samples from established meadows and undisturbed sites.

This is done in collaboration with the help of local farmers and landowners who are seeing the benefits of the work DLF does with nature. This method of seed collection has facilitated the creation of a traceable seed library, retaining the details and wild genetics of the wildflower seeds.

## PRECISION SOWING AND HARVESTING

Seed is sown using a precision drill and GPS steering, which enables a follow up run with a tractor mounted hoe to take out weeds between the rows.

After a (hopefully successful!) growing season, comes harvest – either done by hand on smaller crops or by small scale combine. Designed to be self-cleaning, these combines help to keep the fields and seed clean from mixing with previously harvested crops.

## DRYING, CLEANING AND STORAGE

After harvesting, the seed is slowly conditioned using ambient air in DLF's purpose built drying facility. Using ambient air ensures the seed isn't dried out too rapidly, retaining its viability. From here, the cleaning process can begin.

The first step is the pre-clean – taking out the bulky material like sticks and chaff. After pre-cleaning, seed is stored in boxes for fine cleaning in winter. DLF have a variety of cleaning machines that can separate seed by size, weight, length and even shape. This stage is critical to ensure the customer achieves the results they want from their plants. DLF are incredibly proud that seed is cleaned to **99.8% purity**.

The cleaned seed is then bagged up and put into humidity-controlled cold stores, where it enters dormancy to ensure its viability remains as high as it can be.



## FROM SEED COLLECTION TO SCALED PRODUCTION

After collecting the samples, the seed is multiplied where trials can then take place to assess the viability of the plants and understand their growing habits. With the fresh seed harvested from these experimental areas, production can then be scaled up to meet customer requirements.

Every year, different species are researched and trialled to further bolster the variety and availability of species in DLF's wildflower seed mixtures in the future.



## MIXTURES DESIGNED FOR REAL ENVIRONMENTS

Pro flora mixtures are designed with specific environments in mind, composed of native-origin wild flowers and low maintenance grass species which help the wild flowers to flourish while keeping more aggressive weeds at bay.

**Klaas conclude**



**Having our own seed production in house allows us to keep complete control over seed quality and ensures that our customers get the best native wild flower seed possible. We are incredibly proud to work with all types of customer and environment – recovering spaces sustainably and supporting biodiversity and ecology.**

# PRO FLORA RANGE



## ORIGIN

The wild flowers used in the Wild Flora range are guaranteed to be UK Native Origin.

## TECHNICAL SUPPORT

Our experienced team is available to provide advice on mixture selection and site management. For larger projects site visits followed by a written report are available.

## CONTRACT GROWING SERVICE

DLF Seeds has many years experience in the contract production of wild flower seed and plants. This is particularly relevant where extremely large quantities or unusual/rare species are required.

## SPECIAL MIXTURE SERVICE

Whilst our standard mixtures will cater for most situations we are always pleased to advise upon and produce mixtures to your own specification.



# PRO FLORA 1

## CORNFIELD ANNUALS

%	COMMON NAME	SPECIES	HEIGHT CM	COLOUR	PERIOD
<b>20% WILD FLOWERS:</b>					
50	Corn Cockle	Agrostemma githago	60-120	Purple	June - Aug
25	Corn Flower	Centurea cyanus	30-60	Blue	June - Aug
10	Corn Marigold	Chrysanthemum segetum	15-45	Yellow	June - Oct
10	Corn Poppy	Papaver rhoeas	30-60	Red	June - Sept
5	Corn Chamomile	Anthemis arvensis	15-50	White	June - July
<b>80% GRASSES:</b>					
30	Red Fescue	Festuca rubra	15-90		
25	Crested Dogstail	Cynosurus cristatus	5-75		
20	Hard Fescue	Festuca trachyphylla	15-70		
10	Sheeps Fescue	Festuca ovina	20-60		
5	Browntop Bent	Agrostis capillaris	10-70		
10	Smooth Stalked Meadow Grass	Poa pratensis	10-90		

Sowing rate: 5g/m<sup>2</sup>



# PRO FLORA 2

## ACID SOILS

%	COMMON NAME	SPECIES	HEIGHT CM	COLOUR	PERIOD
<b>20% WILD FLOWERS:</b>					
1	<b>Betony</b>	<i>Stachys officianlis</i>	30-80	Purple	June - Sept
1	<b>Birdsfoot Trefoil</b>	<i>Lotus corniculatus</i>	5-40	Yellow	June - Aug
9	<b>Black Knapweed</b>	<i>Centaurea nigra</i>	30-80	Purple	June - Sept
1	<b>Common Cats Ear</b>	<i>Hypochaeris radicata</i>	15-60	Yellow	June - Sept
1	<b>Devils Bit Scabious</b>	<i>Succisa pratensis</i>	20-80	Lilac	July - Sept
2	<b>Foxglove</b>	<i>Digitalis purpurea</i>	50-150	Purple	June - Sept
5	<b>Fragrant Agrimony</b>	<i>Agrimonia procera</i>	40-150	Yellow	June - Aug
5	<b>Greater Birdsfoot Trefoil</b>	<i>Lotus uliginosus</i>	50-60	Yellow	June - Aug
2	<b>Heath Bedstraw</b>	<i>Galium saxatile</i>	0-30	White	June - Sept
11	<b>Lady's Bedstraw</b>	<i>Galium verum</i>	50-80	Yellow	June - Sept
11	<b>Meadow Buttercup</b>	<i>Ranunculus acris</i>	30-100	Yellow	May - Sept
5	<b>Meadow Vetchling</b>	<i>Lathyrus pratensis</i>	80-100	Yellow	May - Aug
6	<b>Oxeye Daisy</b>	<i>Leucanthermum vulgare</i>	20-100	White	May - Oct
7	<b>Salad Burnet</b>	<i>Sanguisorba minor</i>	30-90	Yellow	May - Aug
2	<b>Sheeps Sorrel</b>	<i>Rumex acetosella</i>	30-100	Pink	May - June
3	<b>Sneezewort</b>	<i>Achillea ptarmica</i>	20-150	White	July - Sept
6	<b>Sorrel</b>	<i>Rumex acetosa</i>	30-100	Pink	May - July
8	<b>Tufted Vetch</b>	<i>Vicia cracca</i>	100-200	Purple	June - Aug
6	<b>Yarrow</b>	<i>Achillea millefolium</i>	20-45	White	June - Oct
8	<b>Yellow Rattle</b>	<i>Rhianthus minor</i>	15-40	Yellow	May - Aug
<b>80% GRASSES:</b>					
5	<b>Browntop Bent</b>	<i>Agrostis capillaris</i>	10-70		
3	<b>Sweet Vernal Grass</b>	<i>Anthoxanthum odoratum</i>	10-100		
38	<b>Crested Dogstail</b>	<i>Cynosurus cristatus</i>	5-75		
4	<b>Wavy Hairgrass Grass</b>	<i>Deschampsia flexuosa</i>	20-100		
10	<b>Sheeps Fescue</b>	<i>Festuca ovina</i>	20-60		
40	<b>Chewings Fescue</b>	<i>Festuca rubra commutata</i>	20-100		

Sowing rate: 5g/m<sup>2</sup>



# PRO FLORA 3

## DAMP SOILS

%	COMMON NAME	SPECIES	HEIGHT CM	COLOUR	PERIOD
<b>20% WILD FLOWERS:</b>					
1	Autumn Hawkbit	Leontodon autumnalis	30-50	Yellow	Aug - Oct
2	Betony	Stachys officianlis	30-80	Purple	June - Sept
2	Birdsfoot Trefoil	Lotus corniculatus	5-40	Yellow	June - Aug
11	Black Knapweed	Centaurea nigra	30-80	Purple	June - Sept
2	Great Burnet	Sanguisorba officinalis	40-90	Red	June - Sept
10	Meadow Buttercup	Ranunculus acris	30-100	Yellow	May - Sept
1	Meadow Cranesbill	Geranium pratense	30-60	Blue	June - Sept
4	Meadow Vetchling	Lathyrus pratensis	80-100	Yellow	May - Aug
3	Musk Mallow	Malva moschata	30-80	Pink	May - Aug
8	Ox-Eye Daisy	Leucanthemum vulgare	20-100	White	May - Oct
3	Red Campion	Silene dioica	50-80	Red	May - Sept
1	Rough Hawkbit	Leontodon hispidus	20-40	Yellow	June - Sept
5	Salad Burnet	Sanguisorba minor	30-90	Yellow	May - Aug
14	Selfheal	Prunella vulgaris	5-20	Purple	June - Sept
6	Sorrel	Rumex acetosa	30-100	Pink	May - July
7	Tufted Vetch	Vicia cracca	100-200	Purple	June - Aug
3	White Campion	Silene alba	30-100	White	May - Sept
7	Yarrow	Achillea millefolium	20-45	White	June - Oct
10	Yellow Rattle	Rhianthus minor	15-40	Yellow	May - Aug

### 80% GRASSES:

5	Browntop Bentgrass	Agrostis capillaris	10-70
15	Chewings Fescue	Festuca rubra commutata	20-90
19	Crested Dogstail	Cynosurus cristatus	5-75
6	Golden Oatgrass	Trisetum flavescens	20-80
6	Meadow Foxtail	Alopecurus pratensis	30-120
19	Sheeps Fescue	Festuca ovina	5-60
20	Slender Creeping Red Fescue	Festuca rubra litoralis	20-100
10	Smooth Stalked Meadow Grass	Poa pratensis	10-90

Sowing rate: 5g/m<sup>2</sup>



# PRO FLORA 4

## CALCAREOUS SOILS

%	COMMON NAME	SPECIES	HEIGHT CM	COLOUR	PERIOD
<b>20% WILD FLOWERS:</b>					
1	Betony	Stachys officianlis	30-80	Purple	June - Sept
1	Birdsfoot Trefoil	Lotus corniculatus	5-40	Yellow	June - Aug
3	Bladder Champion	Silene vulgaris	20-60	White	May - Sept
1	Cluster Bellflower	Campanula glomerata	15-50	Blue	June - Oct
4	Common Agrimony	Agrimonia eupatoria	50-80	Yellow	June - Aug
1	Common St Johns Wort	Hypericum perforatum	30-100	Yellow	June - Sept
1	Cowslip	Primula veris	10-30	Yellow	April - June
2	Dark Mullein	Verbascum nigrum	110-130	Yellow	June - Oct
4	Dropwort	Filipendula vulgaris	60-80	White	June - Aug
5	Greater Knapweed	Centaurea scabiosa	50-90	Purple	July - Aug
1	Hairy St Johns Wort	Hypericum hirsutum	30-100	Yellow	July - Aug
2	Hoary Plantain	Plantago media	10-40	Lilac	May - Aug
6	Kidney Vetch	Anthyllis vulnearia	15-30	Yellow	May - Aug
9	Lady's Bedstraw	Galium verum	50-80	Yellow	June - Sept
8	Meadow Buttercup	Ranunculus acris	30-100	Yellow	May - Sept
5	Musk Mallow	Malva moschata	30-80	Pink	May - Aug
8	Ox-Eye Daisy	Leucanthermum vulgare	20-100	White	May - Oct
5	Red Champion	Silene dioica	50-80	Red	May - Nov
4	Salad Burnet	Sanguisorba minor	30-90	Yellow	May - Aug
4	Selfheal	Prunella vulgaris	5-20	Purple	June - Sept
2	Small Scabious	Scabiosa columbaria	20-45	Lilac	June - Aug
8	Tufted Vetch	Vicia cracca	100-200	Purple	June - Aug
4	Vipers Gloss	Echium vulgare	30-100	Blue	June - Aug
4	White Champion	Silene alba	30-100	White	May - Sept
1	Wild Basil	Clinopodium vulgare	30-60	Pink	July - Sept
5	Wild Carrot	Daucus carota	30-100	White	June - Sept
1	Wild Marjoram	Origanum vulgare	20-80	Pink	June - Sept
<b>80% GRASSES:</b>					
5	Browntop Bentgrass	Agrostis capillaris	10-70		
10	Smooth Stalked Meadow Grass	Poa pratensis	10-90		
22	Crested Dogstail	Cynosurus cristatus	5-75		
4	Golden Oatgrass	Trisetum flavescens	20-80		
1	Quaking Grass	Briza media	15-75		
21	Hard Fescue	Festuca trachyphylla	15-70		
12	Sheeps Fescue	Festuca ovina	5-60		
20	Slender Creeping Red Fescue	Festuca rubra litoralis	20-100		
5	Smaller Catstail	Phleum bertolonii	10-50		

Sowing rate: 5g/m<sup>2</sup>



# PRO FLORA 5

## WET SOILS

%	COMMON NAME	SPECIES	HEIGHT CM	COLOUR	PERIOD
<b>20% WILD FLOWERS:</b>					
1	Betony	Stachys officianlis	30-80	Purple	June - Sept
11	Black Knapweed	Centaurea nigra	30-80	Purple	June - Sept
1	Devils Bit Scabious	Succisa pratensis	20-80	Lilac	July - Sept
2	Gipsywort	Lycopus europaeus	30-100	White	July - Sept
2	Greater Birdsfoot Trefoil	Lotus uliginosus	5-40	Yellow	June - Oct
1	Great Burnet	Sanguisorba officinalis	40-90	Red	June - Sept
1	Marsh Woundwort	Stachys palustris	20-100	Pink	July - Sept
11	Meadow Buttercup	Ranunculus acris	30-100	Yellow	May - Sept
6	Meadowsweet	Filipendula ulmaria	50-150	White	June - Aug
9	Ox-Eye Daisy	Leucanthernum vulgare	20-100	White	May - Oct
1	Pepper Saxifrage	Silaum silus	50-75	White	June - Aug
4	Purple Loosestrife	Lythrum salicaria	5-100	Purple	July - Sept
3	Ragged Robin	Lychnis flos-cuculi	30-80	Red	May - June
8	Salad Burnet	Sanguisorba minor	30-90	Yellow	May - Aug
8	Selfheal	Prunella vulgaris	5-20	Purple	June - Sept
2	Sneezewort	Achillea ptarmica	20-150	White	July - Sept
6	Tufted Vetch	Vicia cracca	100-200	Purple	June - Aug
10	Yellow Flag Iris	Iris psudacorus	60-120	Yellow	May - July
13	Yellow Rattle	Rhinanthus minor	15-40	Yellow	May - Aug

### 80% GRASSES:

4	Browntop Bentgrass	Agrostis capillaris	10-70		
20	Chewings Fescue	Festuca rubra commutata	20-90		
19	Crested Dogstail	Cynosurus cristatus	5-75		
6	Meadow Foxtail	Alopecurus pratensis	30-120		
2	Pendulas Sedge	Carex pendula	80-150		
5	Sheeps Fescue	Festuca ovina	5-60		
25	Slender Creeping Red Fescue	Festuca rubra litoralis	20-100		
10	Smooth Stalked Meadow Grass	Poa pratensis	10-90		
1	Soft Rush	Juncus effusus	20-70		
4	Sweet Vernal Grass	Anthoxanthum odoratum	10-100		
4	Tufted Hairgrass	Deschampsia caespitosa	20-200		

Sowing rate: 5g/m<sup>2</sup>



# PRO FLORA 6

## DRY SOILS

%	COMMON NAME	SPECIES	HEIGHT CM	COLOUR	PERIOD
<b>20% WILD FLOWERS:</b>					
1	Autumn Hawkbit	Leontodon autumnalis	10-60	Yellow	Aug - Oct
4	Birdsfoot Trefoil	Lotus corniculatus	5-40	Yellow	June - Aug
9	Black Knapweed	Centaurea nigra	30-80	Purple	June - Sept
2	Black Medick	Medicago lupulina	15-50	Yellow	May - Sept
3	Bladder Champion	Silene vulgaris	20-60	White	May - Sept
1	Bulbous Buttercup	Ranunculus bulbosus	15-35	Yellow	May - Sept
1	Clustered Bellflower	Campanula glomerata	15-50	Blue	June - Oct
3	Common St Johns Wort	Hypericum perforatum	30-100	Yellow	June - Sept
9	Common Agrimony	Agrimony eupatoria	30-60	Yellow	July - Sept
1	Cowslip	Primula veris	5-10	Yellow	April - June
5	Field Scabious	Knautia arvensis	30-90	Lilac	July - Sept
2	Hoary Plantain	Plantago media	10-40	Lilac	May - Aug
5	Kidney Vetch	Anthyllis vulneria	15-30	Yellow	May - Aug
2	Great Mullein	Verbascum thapsus	40-200	Yellow	July - Sept
9	Lady's Bedstraw	Galium verum	50-80	Yellow	June - Sept
1	Musk Mallow	Malva moschata	20-80	Pink	July - Oct
6	Ox-Eye Daisy	Leucanthernum vulgare	20-100	White	May - Oct
9	Salad Burnet	Sanguisorba minor	30-90	Yellow	May - Aug
2	Sheeps Sorrel	Rumex acetosella	30-100	Pink	May - June
5	Vipers Bugloss	Echium vulgare	30-100	Blue	June - Aug
2	Wild Carrot	Daucus carota	30-100	White	June - Sept
7	Yarrow	Achillea millefolium	20-45	White	June - Oct
11	Yellow Rattle	Rhianthus minor	15-40	Yellow	May - Aug

### 80% GRASSES:

5	Browntop Bentgrass	Agrostis capillaris	10-70		
25	Chewings Fescue	Festuca rubra commutata	20-90		
21	Crested Dogstail	Cynosurus cristatus	5-75		
4	Golden Oatgrass	Trisetum flavescens	20-80		
5	Sheeps Fescue	Festuca ovina	5-60		
25	Slender Creeping Red Fescue	Festuca rubra litoralis	20-100		
5	Smaller Catstail	Phleum bertolonii	10-50		
10	Smooth Stalked Meadow Grass	Poa pratensis	10-90		

Sowing rate: 5g/m<sup>2</sup>



# PRO FLORA 7

## HEDGEROW AND LIGHT SHADE

%	COMMON NAME	SPECIES	HEIGHT CM	COLOUR	PERIOD
<b>20% WILD FLOWERS:</b>					
1	Betony	Stachys officianlis	30-80	Purple	June - Sept
4	Black Knapweed	Centaurea nigra	30-80	Purple	June - Sept
8	Common Agrimony	Agrimony eupatoria	30-60	Yellow	July - Sept
2	Common St Johns Wort	Hypericum perforatum	30-120	Yellow	June - Sept
5	Filed Scabious	Knautia arvensis	30-90	Lilac	July - Sept
2	Foxglove	Digitalis purpurea	50-150	Purple	June - Sept
2	Greater Mullein	Verbascum thapsus	40-200	Yellow	July - Sept
1	Hairy St Johns Wort	Hypericum hirsutum	30-100	Yellow	July - Aug
10	Hedge Bedstraw	Galium mollugo	30-160	White	June - Sept
1	Hedge Cranesbill	Geranium pyrenaicum	20-40	Pink	June - Aug
4	Hedge Garlic	Alliaria petiolata	90-125	White	May - Aug
1	Hedge Woundwort	Stachys sylvatica	30-100	Red	July - Aug
1	Musk Mallow	Malva moscata	30-80	Pink	May - Aug
1	Nettle Leaved Bellflower	Campanula trachelium	40-80	Blue	July - Sept
6	Ox-Eye Daisy	Leucanthemum vulgare	20-100	White	May - Oct
12	Red Campion	Silene dioica	50-80	Red	May - Nov
13	Selfheal	Prunella vulgaris	5-20	Purple	June - Sept
3	Small Teasel	Dipsacus pilosus	50-120	White	July - Sept
8	Tufted Vetch	Vicia cracca	100-200	Purple	June - Aug
1	Upright Hedge Parsley	Torilis japonica	80-100	White	July - Aug
1	Wild Basil	Clinopodium vulgare	30-60	Pink	July - Sept
3	Wild Garlic	Allium ursinum	15-50	White	April - June
5	Wood Avens	Geum urbanum	40-60	Yellow	May - June
2	Wood Sage	Teucrium scorodonia	20-30	Yellow	July - Sept
3	Yarrow	Achillea millefolium	20-45	White	June - Oct

### 80% GRASSES:

5	Browntop Bentgrass	Agrostis capillaris	10-70
25	Chewings Fescue	Festuca rubra commutata	20-90
20	Crested Dogstail	Cynosurus cristatus	5-75
20	Sheeps Fescue	Festuca ovina	5-60
15	Slender Red Fescue	Festuca rubra litoralis	20-100
5	Tufted Hairgrass	Deschampsia caespitosa	20-200
10	Rough Stalked Meadow Grass	Poa trivialis	15-90

Sowing rate: 5g/m<sup>2</sup>



# PRO FLORA 8

## LEGACY COUNTRY MEADOW (GENERAL PURPOSE)

%	COMMON NAME	SPECIES	HEIGHT CM	COLOUR	PERIOD
<b>20% WILD FLOWERS:</b>					
2	Birdsfoot Trefoil	Lotus corniculatus	5-40	Yellow	Aug - Oct
12	Black Knapweed	Centaurea nigra	30-80	Purple	June - Sept
6	Black Medick	Medicago lupulina	15-50	Yellow	May - Sept
4	Ladys Bedstraw	Galium verum	50-80	Yellow	May - Sept
12	Meadow Buttercup	Ranunculus acris	30-100	Yellow	May - Sept
1	Musk Mallow	Malva moschata	30-80	Pink	May - Aug
10	Ox-Eye Daisy	Leucanthemum vulgare	20-100	White	May - Oct
5	Ribwort Plantain	Plantago lanceolata	5-50	Brown	May - Sept
11	Red Campion	Silene dioica	50-80	Red	May - Sept
5	Salad Burnet	Sanguisorba minor	30-90	Yellow	May - Aug
12	Self Heal	Prunella vulgaris	5-20	Purple	June - Sept
10	White Campion	Silene alba	30-100	White	May - Sept
5	Wild Carrot	Daucus carota	30-100	White	June - Sept
5	Yarrow	Achillea millefolium	20-45	White	June - Oct

### 80% GRASSES:

5	Browntop Bent	Agrostis capillaris	10-70		
25	Red Fescue	Festuca rubra	15-90		
20	Crested Dogstail	Cynosaurus cristatus	5-75		
20	Chewings Fescue	Festuca commutata	20-90		
20	Hard Fescue	Festuca trachyphylla	15-70		
10	Smooth Stalked Meadow Grass	Poa pratensis	10-90		

Sowing rate: 5g/m<sup>2</sup>



# PRO FLORA 9

## HERITAGE GENERAL PURPOSE

%	COMMON NAME	SPECIES	HEIGHT CM	COLOUR	PERIOD
<b>10% WILD FLOWERS:</b>					
4	<b>Agrimony</b>	Agrimonia eupatoria	50-80	Yellow	June - Aug
1	<b>Birdsfoot Trefoil</b>	Lotus corniculatus	5-40	Yellow	June - Aug
7	<b>Black Knapweed</b>	Centaurea nigra	30-80	Purple	June - Sept
2	<b>Common Mallow</b>	Malva sylvestris	60-120	Mauve	June - Oct
12	<b>Corncockle</b>	Agrostemma githago	60-120	Purple	June - Aug
5	<b>Corn Feverfew</b>	Matricaria perforata	10-80	White	April - Nov
1	<b>Cowslip</b>	Primula veris	10-30	Yellow	April - June
2	<b>Field Poppy</b>	Papaver rhoeas	30-60	Red	June - Sept
1	<b>Foxglove</b>	Digitalis purpurea	50-150	Purple	June - Sept
1	<b>Great Mullein</b>	Verbascum thapsus	10-150	Yellow	June - Aug
2	<b>Hedge Bedstraw</b>	Galium mollugo	30-160	White	June - Sept
2	<b>Hoary Plantain</b>	Plantago media	10-40	Lilac	May - Aug
3	<b>Lady's Bedstraw</b>	Galium verum	50-80	Yellow	June - Sept
5	<b>Salad Burnet</b>	Sanguisorba minor	20-90	Yellow	May - Sept
4	<b>Meadow Buttercup</b>	Ranunculus acris	30-100	Yellow	May - Sept
1	<b>Musk Mallow</b>	Malva moschata	20-80	Pink	July - Oct
5	<b>Oxeye Daisy</b>	Leucanthemum vulgare	20-100	White	May - Oct
1	<b>Ragged Robin</b>	Lychnis flos-cuculi	30-80	Red	May - June
3	<b>St Johns Wort</b>	Hypericum perforatum	30-100	Yellow	June - Sept
8	<b>Red Campion</b>	Silene dioica	60-80	Red	May - Nov
5	<b>Ribwort Plantain</b>	Plantago lanceolata	5-50	Brown	May - Sept
4	<b>Salad Burnet</b>	Sanguisorba minor	15-40	Red	May - Sept
5	<b>Selfheal</b>	Prunella vulgaris	5-20	Purple	June Sept
1	<b>Wild Carrot</b>	Daucus carota	30-100	White	June - Sept
2	<b>Wild Clary</b>	Salvia verbanaca	40-80	Blue	May - Sept
6	<b>Wild Parsnip</b>	Pastinaca sativa	30-150	Yellow	May - Sept
4	<b>White Campion</b>	Silene alba	30-100	White	May - Sept
2	<b>Wood Avens</b>	Geum urbanum	40-60	Yellow	May - June
1	<b>Yarrow</b>	Achillea millefolium	20-45	White	June - Oct

### 90% GRASSES:

1	<b>Sweet Vernal Grass</b>	Anthoxanthum odoratum	10-100
2	<b>Meadow Foxtail</b>	Alopercurus pratense	30-120
10	<b>Crested Dogstail</b>	Cynosurus cristatus	5-75
8	<b>Smooth Stalked Meadow Grass</b>	Poa pratensis	10-90
15	<b>Slender Red Fescue</b>	Festuca rubra litoralis	20-100
5	<b>Browntop Bentgrass</b>	Agrostis capillaris	10-70
10	<b>Sheeps Fescue</b>	Festuca ovina	5-60
35	<b>Chewings Fescue</b>	Festuca rubra commutata	20-90
4	<b>Salt Marsh Grass</b>	Pucinnella distans	10-60
2	<b>Yellow Oatgrass</b>	Trisetum flavescens	20-80
8	<b>Rough Stalked Meadow Grass</b>	Poa trivialis	20-100

Sowing rate: 5g/m<sup>2</sup>

# PRO FLORA 10

## GENERAL PURPOSE PLUS ANNUALS

%	COMMON NAME	SPECIES	HEIGHT CM	COLOUR	PERIOD
<b>10% WILD FLOWERS:</b>					
2	Birdsfoot Trefoil	Lotus corniculatus	5-40	Yellow	Aug - Oct
8	Black Knapweed	Centaurea nigra	30-80	Purple	June - Sept
4	Black Medick	Medicago lupulina	15-50	Yellow	May - Sept
10	Corn Cockle	Agrostemma githago	60-120	Purple	June - Aug
5	Corn Flower	Centaurea cyanus	30-60	Blue	June - Aug
5	Corn Marigold	Chrysanthemum segetum	15-45	Yellow	June - Oct
4	Corn Poppy	Papaver rhoeas	30-60	Red	June - Sept
3	Ladys Bedstraw	Galium verum	50-80	Yellow	June - Sept
10	Meadow Buttercup	Ranunculus acris	30-100	Yellow	May - Sept
1	Musk Mallow	Malva moschata	20-80	Pink	May - Aug
10	Ox-Eye Daisy	Leucanthemum vulgare	20-100	White	May - Oct
8	Ribwort Plantain	Plantago lanceolata	5-50	Brown	May - Sept
10	Red Campion	Silene dioica	30-100	Red	May - Sept
11	Self Heal	Prunella vulgaris	5-20	Purple	June - Sept
5	White Campion	Silene alba	30-100	White	May - Sept
4	Yarrow	Achillea millifolium	20-45	White	June - Oct

### 90% GRASSES:

5	Browntop Bent	Agrostis capillaris	10-70
25	Red Fescue	Festuca rubra	15-90
20	Crested Dogs Tail	Cynosurus cristatus	5-75
20	Chewings Fescue	Festuca commutata	30-120
20	Hard Fescue	Festuca trachyphylla	15-70
10	Smooth Stalked Meadow Grass	Poa pratensis	10-90

Sowing rate: 5g/m<sup>2</sup>



# PRO FLORA 11

## WOODLAND AND HEAVY SHADE

%	COMMON NAME	SPECIES	HEIGHT CM	COLOUR	PERIOD
<b>20% WILD FLOWERS:</b>					
10	Blue Bell	Hyacinthoides non-scripta	10-40	Blue	April - June
6	Common Agrimony	Agrimonia eupatoria	10-50	Yellow	June - Sept
2	Cow Parsley	Anthriscus sylvestris	10-50	White	May - June
4	Foxglove	Digitalis purpurea	50-150	Purple	June - Sept
1	Hairy St Johns Wort	Hypericum hirsutum	30-100	Yellow	July - Aug
10	Hedge Bedstraw	Galium mollugo	30-160	White	June - Sept
8	Hedge Garlic	Alliaria petiolata	90-125	White	May - Aug
1	Hedge Woundwort	Stachys sylvatica	30-100	Red	July - Aug
3	Lesser Burdock	Arctium minus	50-150	Purple	July - Sept
8	Meadowsweet	Filipendula ulmaria	50-150	White	June - Aug
1	Nettle-Leaved Bellflower	Campanula trachelium	40-80	Blue	July - Sept
4	Ragged Robin	Lychnis flos-cuculi	30-80	Red	May - June
10	Red Campion	Silene dioica	50-80	Red	May - Nov
12	Selfheal	Prunella vulgaris	5-20	Purple	June - Sept
5	Tufted Vetch	Vicia cracca	100-200	Purple	June - Aug
1	Wild Angelica	Angelica sylvestris	50-200	White	July - Sept
1	Wild Basil	Clinopodium vulgare	30-60	Pink	July - Sept
3	Wild Garlic	Allium ursinum	15-50	White	April - June
1	Wood Anemone	Aemone nemorosa	5-20	Purple	Mar - May
6	Wood Avens	Geum urbanum	50-70	Yellow	June - Aug
3	Wood Sage	Teucrium scorodonia	20-30	Yellow	July - Sept

### 80% GRASSES:

5	Browntop Bentgrass	Agrostis capillaris	10-70
25	Chewings Fescue	Festuca rubra commutata	20-90
20	Crested Dogstail	Cynosurus cristatus	5-75
10	Sheeps Fescue	Festuca ovina	5-60
15	Slender Creeping Red Fescue	Festuca rubra litoralis	20-100
5	Tufted Hairgrass	Deschampsia caespitosa	20-200
20	Wood Meadowgrass	Poa nemoralis	15-90

Sowing rate: 5g/m<sup>2</sup>



# PRO FLORA 12

## WATER MARGIN AND POND EDGES

%	COMMON NAME	SPECIES	HEIGHT CM	COLOUR	PERIOD
<b>20% WILD FLOWERS:</b>					
3	Common Agrimony	Agrimonia eupatoria	10-50	Yellow	June - Sept
1	Common Fleabane	Pulicaria dysenterica	30-80	Yellow	July - Sept
5	Gipsy Wort	Lycopus europaeus	30-100	White	June - Sept
2	Great Burnet	Sanguisorba officinalis	40-90	Red	June - Sept
5	Greater Birdsfoot Trefoil	Lotus uliginosus	5-40	Yellow	Aug - Sept
1	Hemp Agrimony	Eupatorium cannabinum	30-180	Pink	July - Sept
1	Marsh Bedstraw	Galium palustre	20-60	White	June - Aug
1	Marsh Woundwort	Stachys palustris	50-180	Purple	June - Aug
11	Meadow Buttercup	Ranunculus acris	30-100	Yellow	May - Sept
10	Meadowsweet	Filipendula ulmaria	50-150	White	June - Aug
6	Purple Loosestrife	Lythrum salicaria	50-100	Purple	July - Sept
3	Ragged Robin	Lychnis flos-cuculi	30-80	Red	May June
9	Salad Burnet	Sanguisorba minor	20-90	Yellow	May - Sept
11	Self Heal	Prunella vulgaris	5-20	Purple	June - Sept
2	Sneezewort	Achillea ptarmica	20-150	White	July - Sept
5	Sorrel	Rumex acetosa	10-60	Red	Mar - Sept
1	Square Stemmed St J. Wort	Hypericum tetrapterum	30-60	Yellow	July - Sept
7	Tufted Vetch	Vicia cracca	100-200	Purple	June - Aug
2	Water Avens	Geum rivale	60-80	Pink	April - July
14	Yellow Flag Iris	Iris pseudacorus	60-120	Yellow	May - July

### 80% GRASSES:

5	Browntop Bentgrass	Agrostis capillaris	10-70		
1	Soft Rush	Juncus effusus	20-70		
32	Crested Dogstail	Cynosurus cristatus	5-75		
10	Meadow Foxtail	Alopecurus pratensis	30-120		
1	Pendulas Sedge	Carex pendula	60-180		
7	Rough Stalked Meadow Grass	Poa trivialis	20-100		
10	Sheeps Fescue	Festuca ovina	5-60		
25	Slender Creeping Red Fescue	Festuca rubra litoralis	20-100		
4	Sweet Vernal	Anthoxanthum odoratum	10-100		
5	Tufted Hairgrass	Deschampsia caespitosa	20-200		

Sowing rate: 5g/m<sup>2</sup>



# PRO FLORA 13

## SPECIES RICH LAWN AND LANDSCAPE

%	COMMON NAME	SPECIES	HEIGHT CM	COLOUR	PERIOD
<b>20% WILD FLOWERS:</b>					
2	Autumn Hawkbit	Leontodon autumnalis	30-50	Yellow	Aug - Oct
7	Black Knapweed	Centaurea nigra	30-80	Purple	June - Sept
5	Black Medick	Medicago lupulina	15-50	Yellow	May - Sept
5	Birdsfoot Trefoil	Lotus corniculatus	5-40	Yellow	June - Aug
1	Bulbous Buttercup	Ranunculus bulbosus	15-35	Yellow	May - Aug
0.5	Common Daisy	Bellis perennis	0-5	White	May - Oct
1.5	Common Cat's-ear	Hypochaeris radicata	15-60	Yellow	June - Sept
1	Cowslip	Primula veris	10-30	Yellow	April - June
1	Field Pansy	Viola arvensis	10-39	Yellow Violet	April - Oct
3	Hoary Plantain	Plantago media	5-30	Lilac	May - Aug
8	Kidney Vetch	Anthyllis vulneraria	15-30	Yellow	May - Aug
12	Lady's Bedstraw	Galium verum	50-80	Yellow	June - Sept
14	Meadow Buttercup	Ranunculus acris	30-100	Yellow	May - Sept
2	Red Clover	Trifolium pratense	20-60	Red Purple	May - Oct
1	White Clover	Trifolium repens	20-50	White	May - Oct
9	Oxeye Daisy	Leucanthemum vulgare	20-100	White	May - Oct
2	Ribwort Plantain	Plantago lanceolata	5-50	Brown	May - Sept
1	Rough Hawkbit	Leontodon hispidus	20-40	Yellow	June - Sept
15	Selfheal	Prunella vulgaris	5-20	Purple	June - Sept
4	Sorrel	Rumex acetosa	30-100	Pink	May - July
5	Yarrow	Achillea millefolium	20-45	White	June - Oct

### 80% GRASSES:

4	Browntop Bent	Agrostis capillaris	10-70
27	Crested Dogstail	Cynosurus cristatus	5-75
25	Sheeps Fescue	Festuca ovina	5-60
20	Slender Creeping Red Fescue	Festuca rubra litoralis	20-100
5	Small Timothy	Phleum bertolonii	10-50
15	Smooth Stalked Meadow Grass	Poa pratensis	10-90
4	Sweet Vernal Grass	Anthoxanthum odoratum	10-100

Sowing rate: 5g/m<sup>2</sup>



# PRO FLORA 14

## TALL HERB AND TUSSOCK

%	COMMON NAME	SPECIES	HEIGHT CM	COLOUR	PERIOD
<b>20% WILD FLOWERS:</b>					
8	Black Knapweed	<i>Centaurea nigra</i>	30-80	Purple	June - Sept
9	Common Agrimony	<i>Agrimony eupatoria</i>	30-60	Yellow	July - Sept
3	Cow Parsley	<i>Anthriscus sylvestris</i>	40-150	White	April - June
3	Greater Knapweed	<i>Centaurea scabiosa</i>	50-90	Purple	July - Aug
10	Hedge Bedstraw	<i>Galium mollugo</i>	30-160	White	June - Sept
5	Lesser Burdock	<i>Arctium minus</i>	50-150	Purple	July - Sept
3	Musk Mallow	<i>Malva moschata</i>	20-80	Pink	May - Aug
6	Ox-Eye Daisy	<i>Leucanthemum vulgare</i>	20-100	White	May - Oct
5	Ribwort Plantain	<i>Plantago lanceolata</i>	5-50	Brown	May - Sept
11	Red Campion	<i>Silene dioica</i>	30-100	Red	May - Sept
8	Salad Burnet	<i>Sanguisorba minor</i>	20-90	Yellow	May - Sept
9	Self Heal	<i>Prunella vulgaris</i>	5-20	Purple	June - Sept
1	Small Teasel	<i>Dipsacus pilosus</i>	50-120	White	July - Sept
7	Teasel	<i>Dipsacus fullonum</i>	50-200	Pale Purple	July - Sept
3	Tufted Vetch	<i>Vicia cracca</i>	100-200	Purple	June - Aug
5	Wild Carrot	<i>Daucus carota</i>	30-100	White	June - Sept
4	Yarrow	<i>Achillea millifolium</i>	20-45	White	June - Oct

### 80% GRASSES:

12	Cocksfoot	<i>Dactylis glomerata</i>	15-140
25	Crested Dogs Tail	<i>Cynosurus cristatus</i>	5-75
10	Meadow Fescue	<i>Festuca pratensis</i>	30-120
3	Meadow Foxtail	<i>Alopecurus pratensis</i>	30-120
10	Sheeps Fescue	<i>Festuca ovina</i>	5-60
14	Red Fescue	<i>Festuca rubra</i>	15-90
8	Tall Fescue	<i>Festuca arundinacea</i>	45-200
5	Tall Oat Grass	<i>Arrhenatherum elatius</i>	50-150
10	Timothy	<i>Phleum pratense</i>	40-150
3	Yorkshire Fog	<i>Holcus lanatus</i>	20-100

Sowing rate: 5g/m<sup>2</sup>



# PRO FLORA 15

## POLLINATOR

%	COMMON NAME	SPECIES	HEIGHT CM	COLOUR	PERIOD
<b>20% WILD FLOWERS:</b>					
4.5	Birdsfoot Trefoil	Lotus corniculatus	5-40	Yellow	June - Sept
15	Black Knapweed	Centaurea nigra	30-80	Purple	June - Aug
2	Common Evening Primrose	Oenothera biennis	100-150	Yellow	June - Sept
1	Devils Bit Scabious	Succisa pratensis	20-80	Lilac	July - Sept
1	Field Scabious	Knautia arvensis	30-90	Lilac	July - Sept
2	Great Mullein	Verbascum thapsus	10-150	Yellow	June - Aug
5	Kidney Vetch	Anthyllis vulneraria	15-30	Yellow	May - Aug
7	Meadow Buttercup	Ranunculus acris	30-100	Yellow	May - Sept
9	Oxeye Daisy	Leucanthemum vulgare	20-100	White	May - Oct
2.5	Red Clover	Trifolium pratensis	10-30	Red	May - Aug
1	Rough Hawkbit	Leontodon hispidus	20-40	Yellow	June - Sept
20	Sainfoin	Onobrychis viciifolia	30-60	Pink	May - Sept
14	Selfheal	Prunella vulgaris	5-20	Blue	June - Sept
4	Tufted Vetch	Vicia cracca	100-200	Blue	June - Aug
3	Vipers Bugloss	Echium vulgare	30-100	Blue	June - Aug
7	Wild Carrot	Daucus carota	30-100	White	June - Sept
2	Wild Clary	Salvia verbenaca	40-80	Blue	May - Sept

### 80% GRASSES:

5	Browntop Bent	Agrostis capillaris	10-70
34	Chewings Fescue	Festuca rubra commutata	30-120
35	Crested Dogstail	Cynosurus cristatus	5-75
3	Meadow Foxtail	Alopecurus pratensis	30-120
20	Smooth Stalked Meadow Grass	Poa pratensis	10-90
3	Sweet Vernal Grass	Anthoxantomum odoratum	10-100

Sowing rate: 5g/m<sup>2</sup>



# PRO FLORA 16

## COASTAL

%	COMMON NAME	SPECIES	HEIGHT CM	COLOUR	PERIOD
<b>20% WILD FLOWERS:</b>					
5	Birdsfoot Trefoil	Lotus corniculatus	5-40	Yellow	June - Sept
1	Bladder Champion	Silene vulgaris	20-60	White	May - Sept
15	Black Knapweed	Centaurea nigra	30-80	Purple	June - Aug
0.5	Catsear	Hypochaeris radicata	15-60	Yellow	June - Sept
1	Common St Johns Wort	Hypericum perforatum	30-100	Yellow	June - Sept
1.5	Evening Primrose	Oenothera biennis	50-120	Yellow	June - Sept
2	Greater Knapweed	Centaurea scabiosa	50-90	Purple	July - Aug
2	Great Mullein	Verbascum thapsus	10-150	Yellow	June - Aug
7.5	Kidney Vetch	Anthyllis vulnearia	15-30	Yellow	May - Aug
3	Ladys Bedstraw	Galium verum	50-80	Yellow	June - Sept
13	Oxeye Daisy	Leucanthemum vulgare	20-100	White	May - Oct
0.5	Red Clover	Trifolium pratensis	10-30	Red	May - Aug
10	Ribwort Plantain	Plantago lanceolata	5-50	Brown	May - Sept
0.5	Sea Champion	Silene uniflora	15-30	White Blue	May - July
0.5	Sea Holly	Eryngium	30-120	White Blue	June - Aug
0.5	Sea Kale	Crambe maritima	75-100	White	May - July
15	Selfheal	Prunella vulgaris	5-20	Blue	June - Sept
2	Sorrel	Rumex aetosa	30-100	Pink	May - July
5	Sheeps Sorrel	Rumex acetosella	10-45	Red	June - Aug
2.5	Vipers Bugloss	Echium vulgare	30-100	Blue	June - Aug
1	Wild Clary	Salvia verbenaca	40-80	Blue	May - Sept
5	Wild Carrot	Daucus carota	30-100	White	June - Sept
6	White Champion	Silene alba	30-100	White	May - Sept

### 80% GRASSES:

19	Crested Dogtail	Cynosurus cristatus	10-70
6	Creeping Bent	Agrostis stolonifera	10-70
18	Sheeps Fescue	Festuca ovina	5-60
25	Slender Creeping Red Fescue	Festuca rubra litoralis	30-120
12	Small Timothy	Phleum bertolonii	20-50
10	Saltmarsh Grass	Puccinellia maritima	5-80
10	Smooth Stalked Meadow Grass	Poa pratensis	10-90

Sowing rate: 5g/m<sup>2</sup>



# PRO FLORA 17

## SUDS ONEMIX



%	COMMON NAME	SPECIES	HEIGHT CM	COLOUR	PERIOD
<b>20% WILD FLOWERS:</b>					
3.5	Agrimony	Agrimonia eupatoria	5-40	Yellow	June - Sept
1.5	Betony	Stachys officinalis	30-80	Purple	June - Sept
7.5	Black Knapweed	Centaurea nigra	30-80	Purple	June - Aug
6	Black Medick	Medicago lupulina	15-50	Yellow	May - Sept
1.5	Bladder Campion	Silene vulgaris	20-60	White	May - Sept
0.5	Common St Johns Wort	Hypericum perforatum	30-100	Yellow	June - Sept
0.05	Cowslip	Primula veris	10-30	Yellow	April - June
0.15	Devils Bit Scabious	Succisa pratensis	20-80	Lilac	July - Sept
1	Field Scabious	Knautia arvensis	30-90	Lilac	July - Sept
0.2	Greater Burnet	Sanguisorba officinalis	40-90	Red	June - Sept
1	Gypsywort	Lycopus europaeus	30-100	White	June - Sept
5	Kidney Vetch	Anthyllis vulnearia	15-30	Yellow	May - Aug
6	Ladys Bedstraw	Galium verum	50-80	Yellow	June - Sept
5	Meadow Buttercup	Ranunculus acris	30-100	Yellow	May - Sept
2	Meadow Sweet	Filipendula ulmaria	50-150	White	June - Aug
4.5	Musk Mallow	Malva moschata	20-80	Pink	May - Aug
5	Oxeye Daisy	Leucanthemum vulgare	20-100	White	May - Oct
0.5	Purple Loosetrife	Lythrum salicaria	50-100	Purple	July - Sept
0.5	Ragged Robin	Silene flos-cuculi	30-100	Red	May - Sept
7.5	Red Campion	Silene dioica	30-100	Red	May - Sept
6	Salad Burnet	Sanguisorba minor	30-100	Red	May - Sept
2.5	Sheeps Sorrel	Rumex acetosella	10-45	Red	June - Aug
2.5	Sorrel	Rumex acetosa	30-100	Pink	May - June
6	Tufted Vetch	Vicia cracca	100-200	Blue	June - Aug
2.5	Vipers Bugloss	Echium vulgare	30-100	Blue	June - Aug
5	White Campion	Silene latifolia	30-100	White	May - Sept
4	Wild Carot	Daucus carota	30-100	White	June - Sept
0.1	Wild Marjoram	Origanum vulgare	20-80	Pink	June - Sept
2.5	Yarrow	Achillea millefolium	20-45	White	June - Oct
5	Yellow Flag Iris	Iris pseudacorus	60-120	Yellow	May - July
5	Yellow Rattle	Rhinanthus minor	15-40	Yellow	May - Aug

### 80% GRASSES:

5	Browntop Bent	Agrostis capillaris	10-70
30	Crested Dogstail	Cynosurus cristatus	5-75
6	Rough Stalked Meadow Grass	Poa trivialis	5-60
6	Smooth Stalked Meadow Grass	Poa pratensis	10-90
18	Strong Creeping Red Fescue	Festuca rubra rubra	15-90
5	Meadow Foxtail	Alopecurus pratensis	30-120
25	Slender Creeping Red Fescue	Festuca rubra litoralis	20-100
2.5	Sweet Vernal Grass	Anthoxanthum odoratum	10-100
2.5	Tufted Hair-Grass	Deschampsia cespitosa	20-200

Sowing rate: 5g/m<sup>2</sup>



### NEW FOR 2026

Sustainable Drainage Systems often require different mixes for wet zones, margins and dry upper banks.

**Pro Flora 17 SUDS OneMix** contains a species mix that will withstand fluctuating water levels, extended dry spells and nutrient-poor soils - ideal for swales, attenuation ponds and infiltration basins. All helping with BNG to create an ecological uplift.

# PRO FLORA 110

## GENERAL PURPOSE (ECONOMY PLUS ANNUALS)

%	COMMON NAME	SPECIES	HEIGHT CM	COLOUR	PERIOD
<b>5% WILD FLOWERS:</b>					
2	Birdsfoot Trefoil	Lotus corniculatus	5-40	Yellow	Aug - Oct
8	Black Knapweed	Centaurea nigra	30-80	Purple	June - Sept
4	Black Medick	Medicago lupulina	15-50	Yellow	May - Sept
10	Corn Cockle	Agrostemma githago	60-120	Purple	June - Aug
5	Corn Flower	Centaurea cyanus	30-60	Blue	June - Aug
5	Corn Marigold	Chrysanthemum segetum	15-45	Yellow	June - Oct
4	Corn Poppy	Papaver rhoeas	30-60	Red	June - Sept
3	Ladys Bedstraw	Galium verum	50-80	Yellow	June - Sept
10	Meadow Buttercup	Ranunculus acris	30-100	Yellow	May - Sept
1	Musk Mallow	Malva moschata	20-80	Pink	May - Aug
10	Ox-Eye Daisy	Leucanthemum vulgare	20-100	White	May - Oct
8	Ribwort Plantain	Plantago lanceolata	5-50	Brown	May - Sept
10	Red Campion	Silene dioica	30-100	Red	May - Sept
11	Self Heal	Prunella vulgaris	5-20	Purple	June - Sept
5	White Campion	Silene alba	30-100	White	May - Sept
4	Yarrow	Achillea millifolium	20-45	White	June - Oct

### 95% GRASSES:

5	Browntop Bent	Agrostis capillaris	10-70
25	Red Fescue	Festuca rubra	15-90
20	Crested Dogs Tail	Cynosurus cristatus	5-75
20	Chewings Fescue	Festuca commutata	30-120
20	Hard Fescue	Festuca trachyphylla	15-70
10	Smooth Stalked Meadow Grass	Poa pratensis	10-90

Sowing rate: 5g/m<sup>2</sup>



# COLOUR BOOST

**Intense colourful flower experiences are the idea behind our Colour Boost Range.**

The exciting new range of mixtures have been designed to create enhanced, attractive amenity spaces. Also providing an essential food source and habitat for many species of animals and invertebrates, especially pollinating insects.



The Colour Boost range of mixtures all have a specific use depending on site and required longevity of the sowing.

With increasing pressure on local authority and golf course budgets, coupled with demands to reduce emissions generated by repeated maintenance operations and the desire to improve and create habitats, sowing a Colour Boost mixture is the natural choice.

Sowing a Colour Boost mixture brings many cost savings for the commercial user compared to more traditional bedding schemes. The mixtures are sown directly onto the final recipient site, requiring little irrigation, fertiliser/chemical application or maintenance throughout the season. This provides a substantial saving over the production, installation and maintenance costs of a traditional bedding scheme.

# CARNIVAL

## A STUNNING CELEBRATION OF BRIGHT AND BOLD ANNUALS

Designed to create a robust and attractive display in any park, public open space or golf course. This flower mixture will provide a dazzling annual display. Quick to establish with a long flowering period from 8 weeks after sowing up until the first frosts.

COMMON NAME	SPECIES	COLOUR
Paper Daisy	Helipterum (acroclinium) roseum	White/Pink/Purple
Pheasants Eye	Adonis aestivalis	Red/Orange
Pot Marigold	Calendula officinalis pacific beauty	Red/Orange/Yellow
Pot Marigold	Calendula officinalis fiesta gitana	Orange/Yellow
Centaurea Cyanus	Cornflower	Blue/Pink/White
Painted Daisy	Chrysanthemum carinatum	Red/Orange/Pink/Yellow
Cosmos	Cosmos bipinnatus (dwarf)	Pink/Purple
Dwarf Morning Glory	Convolvulus tricolor	Blue/Purple/Pink/White
Chinese Forget Me Not	Cynoglossum amabile	Blue
California Poppy	Eschscholzia californica	Multi-Colour Mix
Fineflower	Gilia leptantha	Blue/Pink
Godetia	Clarkia amoena	Pink/White
Baby's Breath	Gypsophila elegans	Red/White
Candytuft	Iberis amara	White
Candytuft	Iberis umbellate	Blue/Pink/Purple
Love-In-A-Mist	Nigella damascene	Blue/Pink/Purple/White
Corn Poppy	Papaver rhoeas	Red

**Sowing rate: 3-5g/m<sup>2</sup>**



# FLORAL CARPET

## LOWER GROWING SUMMER ANNUALS

Low-Growing seasonal annuals mixture, designed to create a robust and attractive display in areas where final growing height is of paramount importance. This is particularly relevant when sowing near visibility splays and sight lines on road junctions. This dwarf flower mixture will provide rich blooms throughout the season, perfect for enhancing any street scene. Quick to establish with a long flowering period from 8 weeks after sowing up until the first frosts.

COMMON NAME	SPECIES	COLOUR
Sweet Alyssum	Lobularia maritima	Lilac/White
Dwarf Morning Glory	Convolvulus tricolor	Blue/Purple/Pink/White
Cornflower	Centaurea cyanus	Blue/Pink/White
California Poppy	Eschscholzia californica	Orange/Yellow
Farewell To Spring	Godetia grandiflora	Pink/Red/White
Virginia Stocks	Malcomia maritima	Lilac/Pink/White
Flax	Linum annum	Blue/Red
Love-In-A-Mist	Nigella damascena	Blue/Pink/Purple/White
Mexican Marigold	Tagetes patula	Orange/Red
China Aster	Callistephus sinensis	Multi-Colour Mix
Pot Marigold	Calendula officinalis	Orange/Yellow
Candytuft	Iberis umbellata	Blue/Pink/Purple/White
Lobelia	Lobelia pendula	Multi-Colour Mix
Baby Blue Eyes	Nemophila insignis	Blue
Phlox Drummondii	Drummonds phlox	Multi-Colour Mix

Sowing rate: 3-5g/m<sup>2</sup>



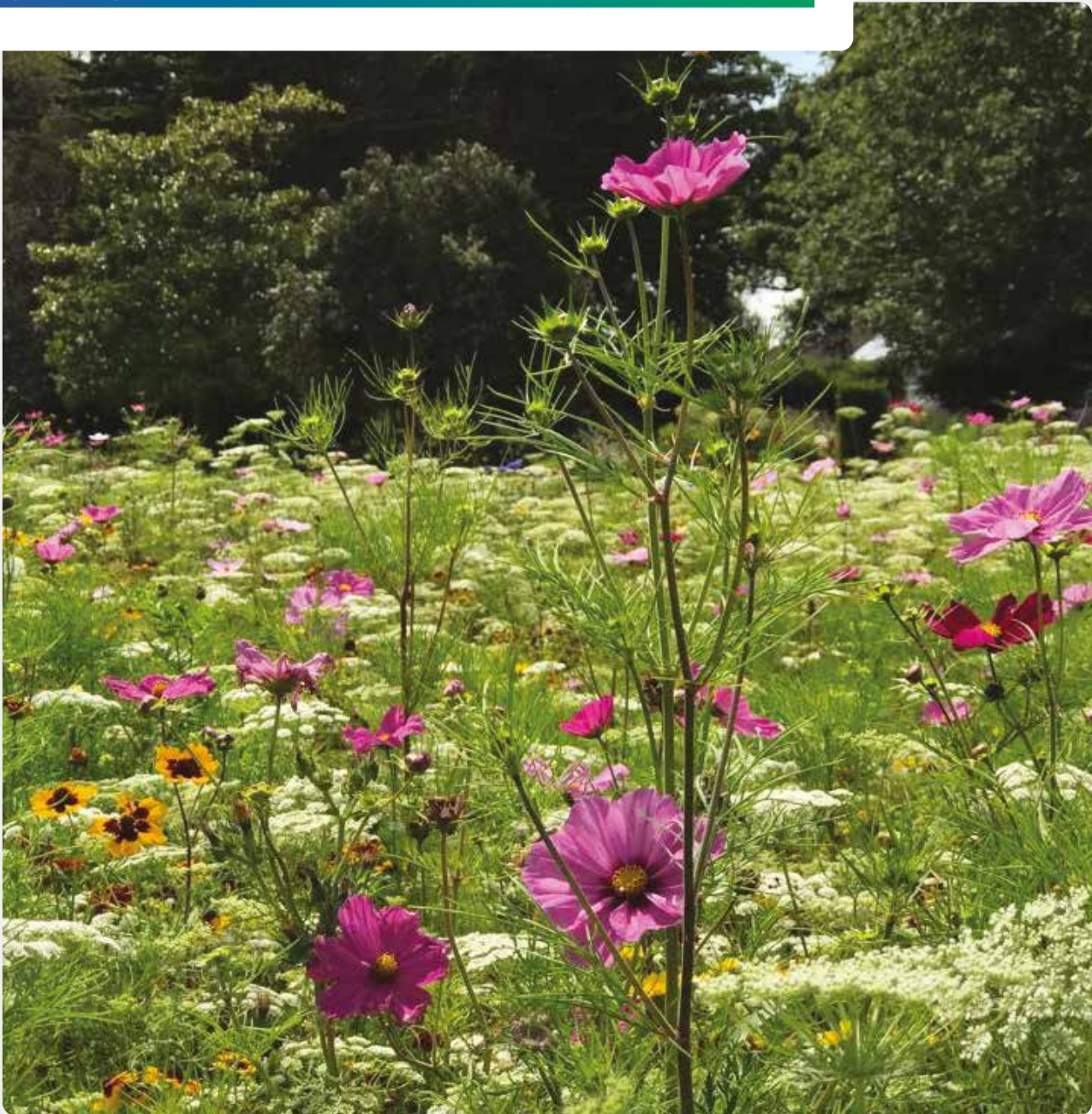
# SKYSCRAPER

## LIGHT THE SKY WITH THIS TALLER GROWING MIX

A taller growing mixture containing classics such as Cosmos and Zinnia. Created for areas where a larger or more open surrounding environment requires a taller growing mixture to deliver the same impact. The taller more robust nature of this mixture also provides fantastic shelter and a habitat for small mammals, invertebrates and pollinating insects.

COMMON NAME	SPECIES	COLOUR
<b>Cornflower</b>	<i>Centaurea cyanus</i>	Blue/Pink/White
<b>Cosmos</b>	<i>Cosmos bipinnatus</i>	Pink/Purple
<b>Corn Marigold</b>	<i>Chrysanthemum segetum</i>	Yellow
<b>Tickseed</b>	<i>Coreopsis tinctoria</i>	Yellow/Red
<b>Mexican Sunflower</b>	<i>Tithonia speciosa</i>	Orange/Red
<b>Garden Zinnia</b>	<i>Zinnia elegans</i>	Red/Yellow/Pink
<b>Mexican Marigold</b>	<i>Tagetes erecta</i>	Yellow/Orange

**Sowing rate: 3-5g/m<sup>2</sup>**



# BIODIVERSITY

## DELIVER COLOUR AND LIFE WITH THIS MIX FOR WILDLIFE

Seasonal Annuals, Biennials and Perennials designed to attract a host of varied fauna including pollinating insects. The composition of species is wide and ensures a good adaptability to different growing conditions. The colour scheme of the mix changes during the season depending on which species are in bloom at the time.

COMMON NAME	SPECIES	COLOUR
<b>PERENNIAL:</b>		
Alpine Forget-Me-Not	<i>Mysotis alpestris</i>	Blue/Pink
Yarrow	<i>Achillea millefolium</i>	White
Musk Mallow	<i>Malva moschata</i>	Pink
Sweet William	<i>Dianthus barbatus</i>	White/Pink/Purple
Purple Coneflower	<i>Echinacea purpurea</i>	Purple
Meadowsweet	<i>Filipendula vulgaris</i>	White
Shasta Daisy	<i>Leucanthemum maximum</i>	White/Yellow
Soapwort	<i>Saponaria ocymoides</i>	Pink

<b>ANNUALS:</b>		
Pot Marigold	<i>Calendula officinalis</i>	Yellow/Orange
Corncockle	<i>Agrostemma githago</i>	Mauve
Common Bugloss	<i>Borago officinalis</i>	Blue

<b>BIENNIALS:</b>		
Wallflower	<i>Cherianthus cheirii</i>	Orange/Yellow
Vipers Bugloss	<i>Echium vulgare</i>	Blue
Foxglove	<i>Digitalis purpurea</i>	Purple
Black Medic	<i>Medicago lupulina</i>	Yellow
Canterbury Bells	<i>Campanula medium</i>	Blue

**Sowing rate: 3-5g/m<sup>2</sup>**



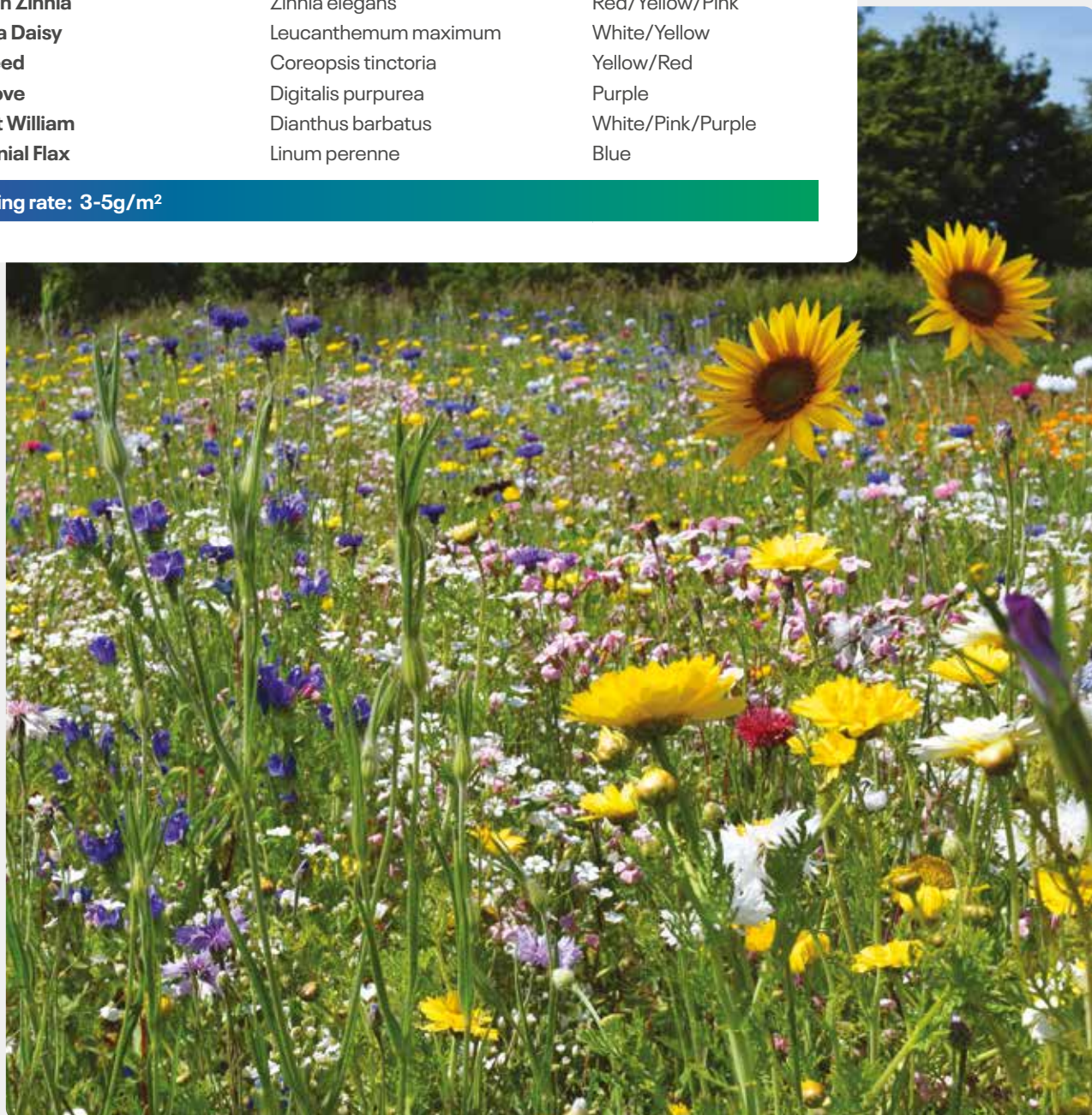
# HONEY BEE & BUTTERFLY

## FLOWERS POPULAR WITH PRECIOUS POLLINATORS

Designed specifically with key pollinators in mind, a really attractive mixture doing a vital job in providing a nectar source for our bee population and other pollinating insects. This mixture will provide a spectacular display in year 1 with species such as Foxglove and Sweet William flowering in year 2 if the mixture is left.

COMMON NAME	SPECIES	COLOUR
<b>Common Bugloss</b>	Borago officinalis	Blue
<b>Cornflower</b>	Centaurea cyanus	White/Blue/Pink/Red
<b>Cosmos</b>	Cosmos bipinnatus	Pink/Purple
<b>Cosmos</b>	Cosmos sulphureus	Orange
<b>California Poppy</b>	Eschscholzia californica	Multi/Colour Mix
<b>Dwarf Sunflower</b>	Helianthus annuus	Yellow
<b>Godetia</b>	Clarkia (godetia) amoena	Pink/White
<b>Black-Eyed Susan</b>	Rudbeckia hirta	Yellow/Red
<b>Garden Zinnia</b>	Zinnia elegans	Red/Yellow/Pink
<b>Shasta Daisy</b>	Leucanthemum maximum	White/Yellow
<b>Tickseed</b>	Coreopsis tinctoria	Yellow/Red
<b>Foxglove</b>	Digitalis purpurea	Purple
<b>Sweet William</b>	Dianthus barbatus	White/Pink/Purple
<b>Perennial Flax</b>	Linum perenne	Blue

**Sowing rate: 3-5g/m<sup>2</sup>**



# BLUSH

## A MIX TO APPEAL TO THE HEART IN TONES OF ROSES AND RED

Pale pinks through to deep reds, Colour Boost Blush provides a beautifully warm mix of flowers from this colour palette. Designed for great succession flowering from late spring through to well into the Autumn.

COMMON NAME	SPECIES	COLOUR
Summer Pheasant's Eye	<i>Adonis aestivalis</i>	Dark Red
Corn Cockle	<i>Agrostemma githago</i>	Purple
Love-Lies-Bleeding	<i>Amaranthus caudatus</i>	Red
China Aster	<i>Callistephus chinensis</i>	Pink/Purple
Corn Flower	<i>Centaurea cyanus</i>	Blue
Spider Flower	<i>Cleome spinosa</i>	Pink
Garden Cosmos	<i>Cosmos bipinnatus</i>	Pink
Forking Larkspur	<i>Delphinium consolida</i>	Dark Blue/Purple
California Poppy	<i>Eschscholzia californica</i>	Red/Orange/Yellow
Strawberry Fields Globe Amaranth	<i>Gomphrena haageana</i>	Red
Showy Baby's Breath	<i>Gypsophila elegans</i>	White/Pink
Pink Sunray	<i>Helipterum manglesii</i>	Pink
Rose Mallow	<i>Lavatera trimestris</i>	Pink
Red Flax	<i>Linum grandiflorum</i>	Red
Night Scented Stock	<i>Matthiola longipetala</i>	Lilac
Marvel Of Peru	<i>Mirabilis jalapa</i>	Yellow/Pink/White
Corn Poppy	<i>Papaver rhoeas</i>	Red
Wild Clary	<i>Salvia horminum</i>	Purple
Cowherb	<i>Saponaria vaccaria</i>	Pink
Youth-And-Age	<i>Zinnia elegans</i>	Pink/Purple/Yellow/Orange

**Sowing rate: 3-5g/m<sup>2</sup>**



# CLASSICAL

## A MIX OF BEAUTIFUL BLUES AND WONDERFUL WHITES

Deep blues through to pure whites gives this trusted colour combination an everlasting appeal. This mixture works especially well in a more formal setting, or providing the transition between a formal and informal landscape.

COMMON NAME	SPECIES	COLOUR
Sweet Alyssum	<i>Alyssum maritimum</i>	White
Queen Anne's Lace	<i>Ammi majus</i>	White
Cornflower	<i>Centaurea cyanus</i>	White
Creeping Daisy	<i>Chrysanthemum paludosum</i>	White
Garden Cosmos	<i>Cosmos bipinnatus</i>	White
California Poppy	<i>Eschscholzia californica</i>	White
Candytuft	<i>Iberis amara</i>	White
Love In A Mis	<i>Nigella damascena</i>	White
Soapwort	<i>Saponaria vaccaria</i>	White
Common Zinnia	<i>Zinnia elegans</i>	White
Common Bugloss	<i>Borago officinalis</i>	Blue
Cornflower	<i>Centaurea cyanus</i>	Blue
Larkspur	<i>Delphinium grandiflorum</i>	Blue
Dragonhead	<i>Dracocephalum moldavicum</i>	Blue
Purple Bugloss	<i>Echium plantagineum</i>	Blue
Flax	<i>Linum usitatissimum</i>	Blue
Love In A Mist	<i>Nigella damascena</i>	Blue
Blue Tansy	<i>Phacelia tanacetifolia</i>	Blue
Annual Sage	<i>Salvia horminum</i>	Blue
Common Vetch	<i>Vicia sativa</i>	Blue

Sowing rate: 3-5g/m<sup>2</sup>



# CHAMELEON

## EVER-CHANGING MIX OF BOLD COLOUR THROUGHOUT THE SEASON

A brilliantly diverse mixture of over 40 species and subspecies providing a fantastic range of colours and forms. This mixture is constantly changing throughout the growing season. Summer Chameleon has been a consistent performer on our trial grounds giving a fantastic show throughout the season.

COMMON NAME	SPECIES	COLOUR
Fossflower	<i>Ageratum houstonianum</i>	Blue
Sweet Alyssum	<i>Alyssum martima procumbens</i>	Purple/Pink
Love-Lies-Bleeding	<i>Amaranthus caudatus</i>	Red
Bishop's Weed	<i>Ammi majus</i>	White
Dill	<i>Anethum graveolens</i>	Yellow
Snapdragon	<i>Antirrhinum maximum</i>	Yellow/Pink/White
Borage	<i>Borago officinalis</i>	Blue
Pot Marigold	<i>Calendula officinalis</i>	Orange
China Aster	<i>Callistephus chinensis</i>	Pink/Purple
Safflower	<i>Carthamus tinctorius</i>	Yellow/Orange
Corn Flower	<i>Centaurea cyanus</i>	Blue
Mediterranean Stock	<i>Cheiranthus maritimus</i>	Pink/Lilac
Painted Daisy (Tricolour)	<i>Chrysanthemum carinatum</i>	Pink/Yellow/White
Elegant Clarkia	<i>Clarkia elegans</i>	Pink/Purple
Purple Chinese Houses	<i>Collinsia bicolor</i>	Purple
Dwarf Morning Glory	<i>Convolvulus tricolor</i>	Blue/White/Yellow
Garden Cosmos	<i>Cosmos bipinnatus</i>	Pink
Chinese Hound's Tongue	<i>Cynoglossum amabile</i>	Blue
Garden Dahlia	<i>Dahlia variabilis</i>	Pink/Purple
Doubtful Knight's Spur	<i>Delphinium ajacis</i>	Blue/Pink/White
Sweet William	<i>Dianthus barbatus</i>	Red/White
Purple Viper's Bugloss	<i>Echium plantagineum</i>	Purple
Foothill Poppy	<i>Eschscholtzia caespitosa</i>	Yellow
Farewell To Spring	<i>Godetia hybrida</i>	Pink/White
Showy Baby's Breath	<i>Gypsophila elegans rose</i>	Pink
Common Sunflower	<i>Helianthus annuus</i>	Yellow
Strawflower	<i>Helichrysum bract.Monstrosa</i>	Yellow/Pink/White
Candytuft	<i>Iberis amara</i>	White
Balsam	<i>Impatiens balsamina</i>	Pink/Lilac
Rose Mallow	<i>Lavatera trimestris</i>	Pink
Moroccan Toadflax	<i>Linaria maroccana</i>	Purple
Lupin	<i>Lupinus hartwegii</i>	Pink/Purple/White/Blue
Mallow Wort	<i>Malope trifida grandiflora</i>	Pink/White
Mayweed	<i>Matricaria eximia</i>	White/Yellow
Hoary Stock	<i>Matthiola incana</i>	Pink/White/Lilac
Bells Of Ireland	<i>Moluccella laevis</i>	Green
Love-In-A-Mist	<i>Nigella damascena</i>	Blue/Pink/White/Purple
Yellow Fennel Flower	<i>Nigella orientalis</i>	Yellow
Black Eyed Susan	<i>Rudbeckia hirta</i>	Yellow/Brown
Cowherb	<i>Saponaria vaccaria</i>	Pink
Sweet Scabious	<i>Scabiosa atropurpurea</i>	Pink/Lilac/Purple
Starflower Pincushions	<i>Scabiosa stellata</i>	White
Monarch Of The Veld	<i>Venidium fastuosum</i>	Orange/White
Youth-And-Age	<i>Zinnia elegans</i>	Pink/Purple/Yellow/Orange

Sowing rate: 3-5g/m<sup>2</sup>

# POPPY

## THE EPITOME OF REMEMBRANCE AND REFLECTION

Creating an evocative image in drifts of bright red. Whether it's just for show or creating a display to remember those hero's no longer with us, the simple poppy makes a great choice. Poppy can often do best if autumn sown.

COMMON NAME	SPECIES	COLOUR
-------------	---------	--------

Corn Poppy	Papaver rhoeas	Red
------------	----------------	-----

Sowing rate: 1g/m<sup>2</sup>



# REHOFIX BULKING GRANULES:

## THE PERFECT PARTNER TO PRO FLORA & COLOUR BOOST MIXTURES

Rehofix Bulking Granules offer a practical and effective solution to one of the most common challenges in establishing species-rich flowering areas: accurately sowing seed mixtures at very low rates.

Wildflower and species-rich mixes often require application rates of just a few grams per square metre. While ideal for successful establishment, these low rates can make machine calibration difficult and increase the risk of human error. Over-application not only wastes valuable seed but can also become costly. Under-application on the other hand, may lead to thin, patchy establishment that fails to deliver the desired visual or ecological impact.

### ADD VOLUME, NOT HASSLE

Rehofix Bulking Granules are designed to eliminate these issues by adding volume to the seed mix, making it easier to handle and distribute evenly. Their light, natural colour acts as a clear visual marker during sowing, helping operators avoid overlapping or over sowing - especially useful when working across large or irregularly shaped areas. Because the granules are 100% plant-based, they naturally decompose into the soil after application, contributing to a clean, sustainable sowing process without leaving behind any unwanted residue.

### REHOFIX FOR PRO FLORA & COLOUR BOOST

Rehofix is a particularly effective sowing partner for the Pro Flora and Colour Boost ranges. For a standard Pro Flora mixture containing grasses and sown at 5 g/m<sup>2</sup>, mixing one part seed with three parts Rehofix Bulking Granules will deliver a total application rate of approximately 20 g/m<sup>2</sup>. This added bulk not only makes calibration simpler but also ensures a more uniform spread across the site.

**For 100% wildflower Pro Flora mixtures**—which are typically applied at the much lower rate of 1–1.5 g/m<sup>2</sup>—Rehofix becomes even more valuable. To achieve the same overall application target of around 20 g/m<sup>2</sup>, mix one part seed with fifteen parts Rehofix Bulking Granules. This provides enough volume for precise sowing while protecting against the common error of over sowing these highly concentrated mixes.

**For Colour Boost mixtures** sown at 3–5 m<sup>2</sup> mix one part Colour Boost with four parts Rehofix Bulking Granules to achieve the same overall application target of around 20 g/m<sup>2</sup>. Rehofix Bulking Granules can be ordered alongside your chosen flower mixture for convenience and are supplied in 20 kg bags. By improving accuracy, reducing waste, and simplifying the sowing process, they provide an indispensable tool for anyone aiming to establish vibrant, species rich landscapes with confidence.



# MANAGEMENT GUIDELINES

## SITE PREPARATION

The aim is to produce a firm weed-free tilth. Subsoils often provide a weed-free, low nutrient status seed bed, and are therefore suitable for wild flora. It is occasionally necessary to remove the topsoil in areas of high fertility, as these soils tend to promote the growth of more vigorous grasses and pernicious weeds. Treat existing vegetation with a systemic herbicide prior to seed bed cultivation, taking note of any site constraints and manufacturer's instructions first.

1. Treat with herbicide, cultivate the site and allow to remain fallow if practical. A repeat herbicide application may be necessary
2. Remove topsoil if applicable
3. Cultivate to 10cm
4. Create a surface tilth

## SOWING

Sowing can take place throughout most of the year, providing a good tilth can be prepared, however the months of March/April and August/September are generally the most suitable for Pro Flora. Colour Boost is generally most suited to a spring sowing, however autumn sowing can prove successful.

1. Regularly mix seed to ensure even species distribution, drill or broadcast
2. Sow at 5g/m<sup>2</sup> for mixtures with grass or 0.5-1.0g/m<sup>2</sup> for pure wild flower mixtures
3. Bulk up small seeding rates with Rehofix MK 1500 Bulking Granules
4. Rake or harrow - mix seed into soil (depth approx 0.5cm) Cambridge roll to firm seed bed

**PRO**Flora 

Colour**BOOST** 



## WILD FLOWER MAINTENANCE

### FIRST YEAR

In the first year control the weeds and reduce competition from grasses. Cut the sward to a height of 5-7cm every two months or when the sward reaches 15cm. Remove all the cuttings. Dig out or spot treat any perennial weeds.

### FUTURE MAINTENANCE

Cut to 5-7cm during March/April and remove cuttings. A second cut should take place at the end of the flowering season during August/October. Remove all cuttings. Further cuts in the autumn period to remove untidy growth may be required.

## MAINTENANCE SUMMARY

### FIRST YEAR

**First cut** 5cm March/April  
(Spring Seeding 1st cut in May).

Cut every 2 months or when sward reaches 15cm

**Final cut** September/October.

Remove all cuttings.

### FUTURE YEARS

**First cut** 5-7cm March/April

**Second cut** 5-7cm August/October

Remove all cuttings.



## CORNFIELD ANNUALS

Cut once flowering period is over - September/October

Weed treat ground if necessary, cultivate and re-seed spring or autumn.

## COLOUR BOOST ANNUALS

Cut once flowering period is over - September/October

Weed treat ground if necessary, cultivate and re-seed spring or autumn.

## COLOUR BOOST BIENNIALS AND PERENNIALS

Hand weed/spot treat as required.

Cut and remove dead top growth before the next spring.

# FERTILISER

THE PRO FERT RANGE OF FERTILISERS HAS BEEN SPECIALLY FORMULATED WITH THE LANDSCAPER AND TURF MANAGER IN MIND.

All products are supplied in easy to handle 20kg bags.



# PRO FERT 1

## PRE-SEED FERTILISER

**USE:** Mainly in pre-seed situations (spring and autumn) to promote a healthy and vigorous root system. Can also be used as an economical feed for existing turf.

### ANALYSIS

**6 : 9 : 6**

Application Rates: 35-70g/m<sup>2</sup>

# PRO FERT 2

## PRE-SEED FERTILISER

**USE:** Mainly pre-seed situations (spring and autumn), or as a spring dressing on outfield sports turf. The plant nutrient ratio of 1: 1.5: 1 is well recognised.

### ANALYSIS

**10 : 15 : 10**

Application Rates: 35-50g/m<sup>2</sup>

# PRO FERT 3

## SPRING/SUMMER FERTILISER

**USE:** An ideal pre-seed fertiliser or as a spring/summer feed to bring on established turf following the winter.

**APPLY:** between March and September.

### ANALYSIS

**12 : 6 : 6**

Application Rates: 50g/m<sup>2</sup>

# PRO FERT 4

## SPRING/SUMMER FERTILISER

A high nitrogen low phosphate fertiliser ideal for all amenity turf situations, this mini compound granule promotes a strong, dense and healthy turf with excellent colour.

**USE:** An ideal pre-seed fertiliser or as a spring/summer feed to bring on established turf following the winter.

**APPLY:** between March and September.

### ANALYSIS

**14 : 0 : 7 + 3MGO + 2FE**  
1-2MM MINI COMPOUND GRANULE

Application Rates: 50g/m<sup>2</sup>

# PRO FERT 6

## AUTUMN/WINTER FERTILISER

A low nitrogen fertiliser with high phosphate and potassium levels enhances root development (where levels are low). Maintains turf colour and improves disease resistance.

**USE:** An ideal autumn/winter fertiliser for established turf.

**APPLY:** September onwards until the end of the growing season.

### ANALYSIS

**3 : 12 : 12**  
2-4MM COMPOUND GRANULE

Application Rates: 50g/m<sup>2</sup>

# TERRA FWP

## HYDROSEEDING MULCH

Terra FWP is a high performance GREEN mulch for hydroseeding applications. It promotes accelerated growth through a combination of seed protection and improved hydration for nourishment. Manufactured from recycled wood fibre, Terra FWP is safe to handle, environmentally sound with an unlimited shelf life.

### RAPID GROWTH

Terra FWP holds 1200% its own weight in water. Its water retention capability ensures newly sprayed seed is provided with vital nourishment necessary for successful germination and establishment.

### SUPERIOR QUALITIES

Uniform grass cover is more achievable due to an even application of slurry containing the Terra FWP.

### ENVIRONMENT

Terra FWP is non-toxic and non-irritant. 100% biodegradable it decomposes to return precious nutrients to the soil.

**Application Rates: 100-180g/m<sup>2</sup>**

# GROWEB

## HYDROSEEDING MULCH

GroWeb Mulch is a blend of natural fibres. The purpose of mulch is to protect and nurture the seed. The fibres knit together when mixed with water, tackifier and fertiliser. Once sprayed onto the surface of the site they provide a protective and moisture retentive cover thus aiding the germination of the seed.

### RAPID GROWTH

GroWeb's mix of fibre provides excellent water absorption - up to 400% its own weight. Its strong mat holds moisture and promotes rapid seed growth for quick, quality results.

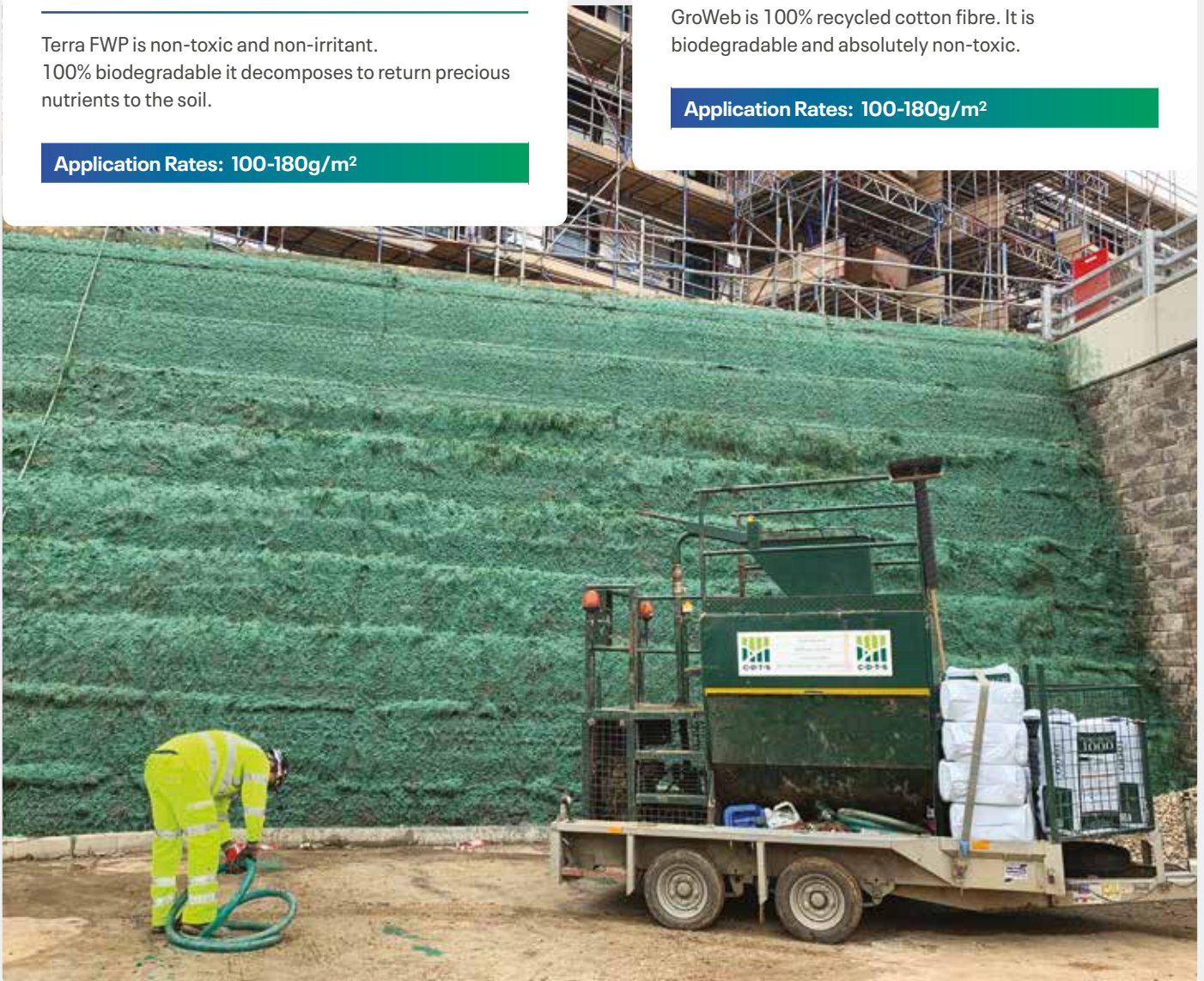
### SUPERIOR QUALITIES

GroWeb has a virtually neutral pH - ideal for establishing vegetation.

### ENVIRONMENT

GroWeb is 100% recycled cotton fibre. It is biodegradable and absolutely non-toxic.

**Application Rates: 100-180g/m<sup>2</sup>**



# GROWEB

## TACKIFIER

GroWeb Tackifier is a natural non-toxic powder made up of 99% natural colloids and 1% inhibitor. The purpose of GroWeb Tackifier is a gelling agent that when mixed with water, swells becoming highly viscous, binding the seed, fertiliser and mulch to the soil surface. GroWeb Tackifier helps protect the seed from wind erosion, water erosion and drought.

### ADVANTAGES OF USING GROWEB TACKIFIER

GroWeb Tackifier is a harmless powder which is easy to handle

GroWeb Tackifier is highly viscous and will assist erosion control by stabilising the soil and holding the other materials in place

GroWeb Tackifier is highly water absorbent and will retain water and re-wet

GroWeb Tackifier lubricates both the mulch and the moving parts of the hydraseeding machine

GroWeb Tackifier helps protect the seed from wind erosion, water erosion and drought

**Application Rates: 2-4g/m<sup>2</sup>**

# GROWEB

## SOIL & PLANT FERTILISER

Organic slow release fertiliser 8:7:7 and minerals, trace elements and natural growth stimulants. GroWeb Soil and Plant Conditioner is a concentrated liquid fertiliser. It is designed as a total replacement, one stop fertiliser.

### ADVANTAGES OF USING GROWEB FERTILISER

A predictable and safe fertiliser

Naturally occurring growth stimulants aid rapid germination

Good micro-organism activity encourages development of healthy sward

Steady Nitrogen release

Increased root depth means greater drought resistance

Organic activity releases locked up nutrients

Both naturally occurring growth stimulants are proven to contribute to recovery from shock as in adverse climatic conditions

**Application Rates: 30-40L per/ha**



# USEFUL DATA

## WEIGHT

lbs	to kilograms	divide by	2.205
kilograms	to lbs	multiply by	2.205
tons	to tonnes	multiply by	1.016
tonnes	to tons	divide by	1.016
cwts	to kilograms	multiply by	50.794
kilograms	to cwts	divide by	50.794

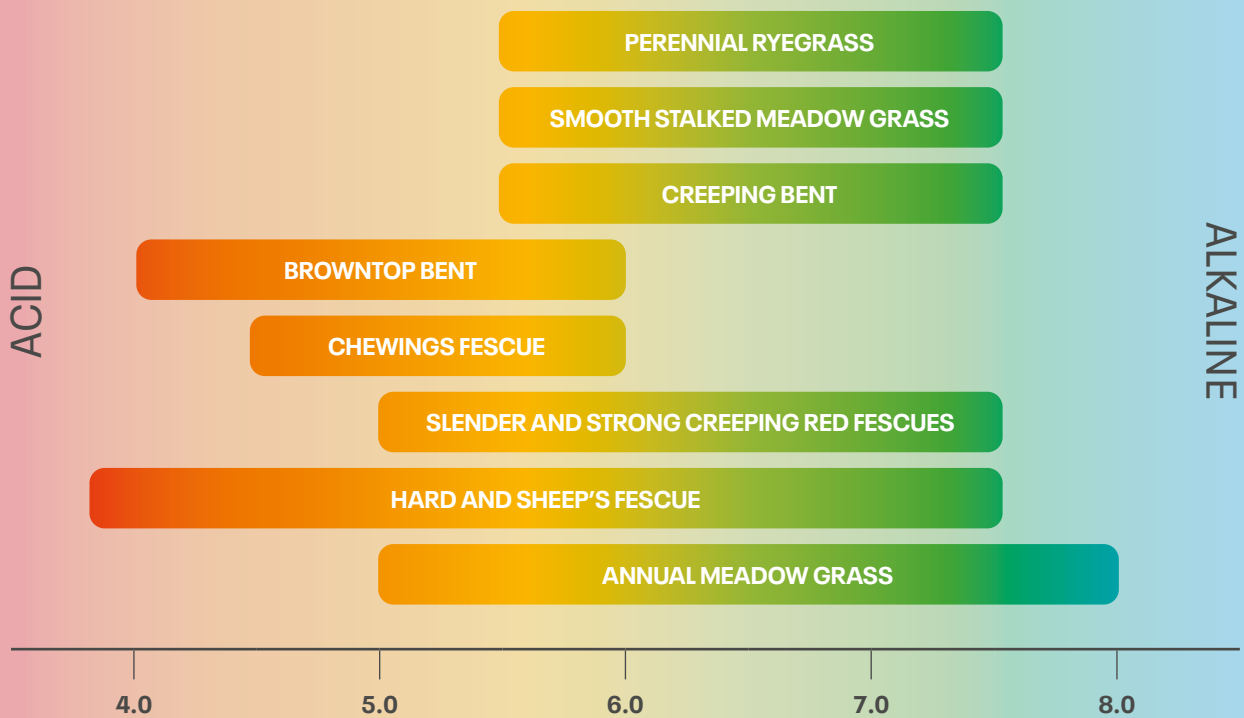
## AREA

acres	to hectares	divide by	2.471
hectares	to acres	multiply by	2.471
square yards	to square metres	multiply by	0.8361
square metres	to square yards	divide by	0.8361

## PITCH DIMENSIONS

	METRES (L X W)	AREA
Soccer	100 x 64	6,400m <sup>2</sup>
Rugby	100 x 69	6,900m <sup>2</sup>
Hockey	91.4 x 55	5,027m <sup>2</sup>
Cricket Square	30 x 23	690m <sup>2</sup>
Lawn Tennis	23.8 x 11	262m <sup>2</sup>
Bowls	40 x 40	1,600m <sup>2</sup>
Croquet	32 x 25.5	816m <sup>2</sup>
Golf Green		500m <sup>2</sup> /600m <sup>2</sup>
Golf Tee		250m <sup>2</sup> /500m <sup>2</sup>

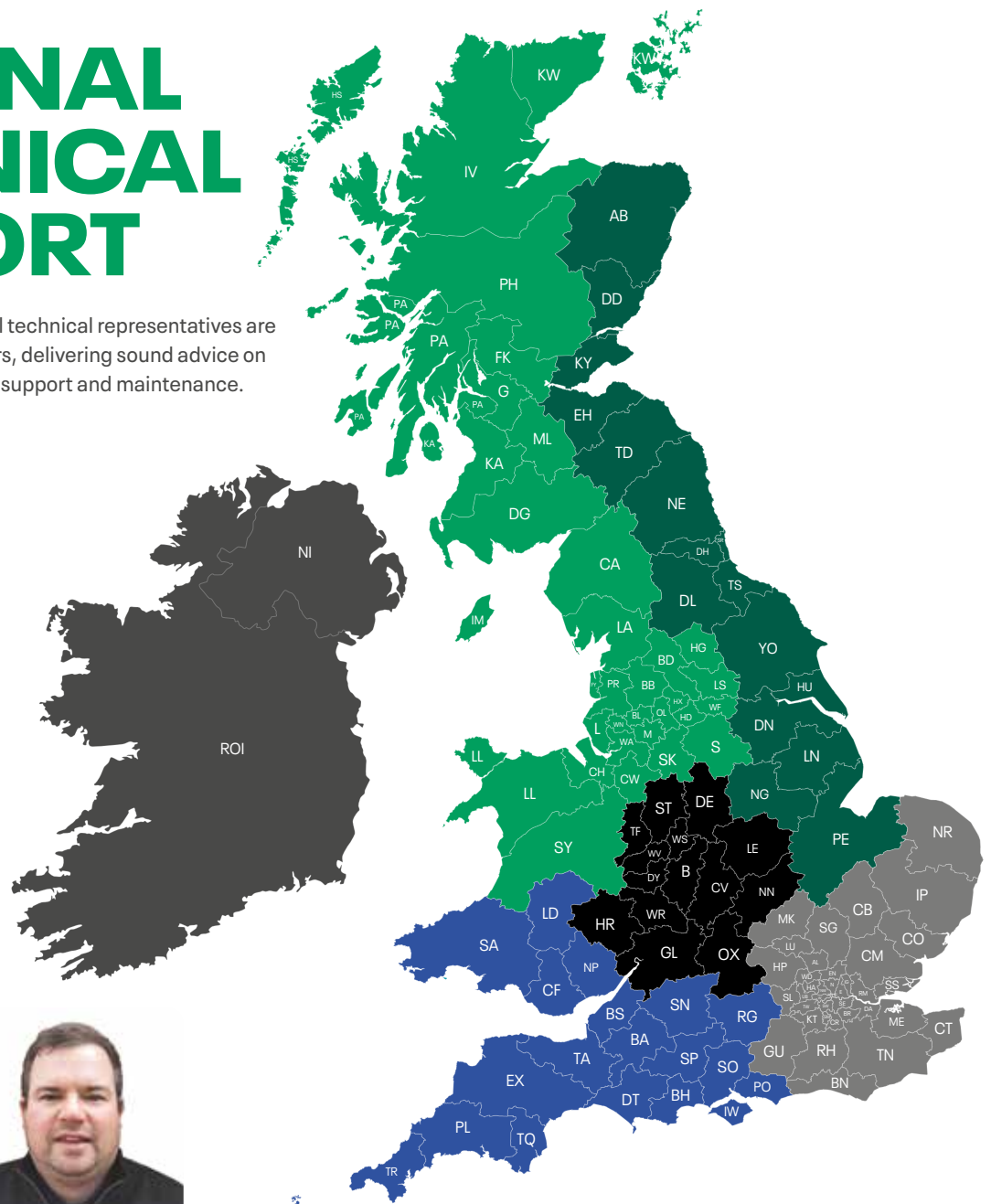
## SOIL PH AND TURF GROWTH



Soil pH. Table shows most suitable pH for grass species

# NATIONAL TECHNICAL SUPPORT

Our experienced team of regional technical representatives are available for Masterline customers, delivering sound advice on mixture & cultivar selection, field support and maintenance.



**Tom Dowling**

T : +353 (0) 87 160 1984  
E : thomas.dowling@dlf.com

IRELAND



**Stuart Yarwood**

M : 07801 459625  
E : stuart.yarwood@dlf.com

NORTH WEST



**Ben Morgan**

T : 07801 459623  
E : ben.morgan@dlf.com

NORTH EAST



**Ian Barnett**

M : 07814 669085  
E : ibarnett@dlf.co.uk

SOUTH WEST



**Matt Gresty**

T : 07767 278335  
E : matthew.gresty@dlf.com

MIDLANDS



**Craig Spooner**

M : 07824 906933  
E : cspooner@dlf.co.uk

SOUTH EAST

# SALES SUPPORT

## HEAD OFFICE

### DLF Seeds Ltd.

Thorn Farm  
Inkberrow  
Worcestershire  
WR7 4LJ

T : 01386 791102

E : amenity@dlf.co.uk

### DLF Seeds Ireland

Ballymountain  
Ferrybank  
Waterford  
X91V6YR

T : 051 897 060

E : info@dlfseeds.ie

# STRENGTH, ENERGY AND PERFORMANCE

It is our pleasure to present the Masterline® brand with our superior grass seed varieties. Our focus is on fine-leaved, dense varieties with outstanding disease, wear and drought tolerance.

By integrating the 4turf® concept in the Masterline® brand it is possible to prolong the season in both spring and autumn.

Our Masterline® mixtures are designed to comply with demanding professional usage and our mixtures are used for prestigious projects such as football stadiums, golf courses, parks and residential areas. Masterline® is the right solution, when only the best quality is acceptable.



#### Head Office

Thorn Farm  
Inkberrow  
Worcestershire  
WR7 4LJ

Tel: 01386 791102

#### Scotland

10 Westerton Road  
East Mains Industrial Estate  
Broxburn, West Lothian  
EH52 5AU

Tel: 01506 674800

#### Ireland

Ballymountain  
Ferrybank  
Waterford  
Ireland

Tel: +353 (0) 51 897 060

[www.dlf.co.uk](http://www.dlf.co.uk)

Disclaimer: Any information provided in this catalogue is given in good faith and to the best of our existing knowledge. Any advice should therefore be taken as a general guide only and not relied upon for all conditions and circumstances. We cannot accept any legal liability for information given in this publication. In any instance where there are shortages of specified species or cultivar we reserve the right to substitute with an equivalent.

All photos in this brochure are with copyright© of DLF.  
For use of photos please contact DLF.