

HeritageGuard

Description

Our HeritageGuard Railings have been designed to provide security whilst maintaining aesthetics in heritage environments. Combining traditional and sophisticated square, round or tubular infill with your choice of ornate finial tops to meet your security and aesthetic requirements.

The rails on many traditional railings can create a ladder effect, acting as climbing aids. HeritageGuard has narrow gaps between the verticals, with the rail set back which virtually eliminates climbing footholds.

To make attacking the fence difficult, HeritageGuard has narrow gaps between the verticals to make it difficult to fit a saw in to damage the fence and no visible fixings from the front side.

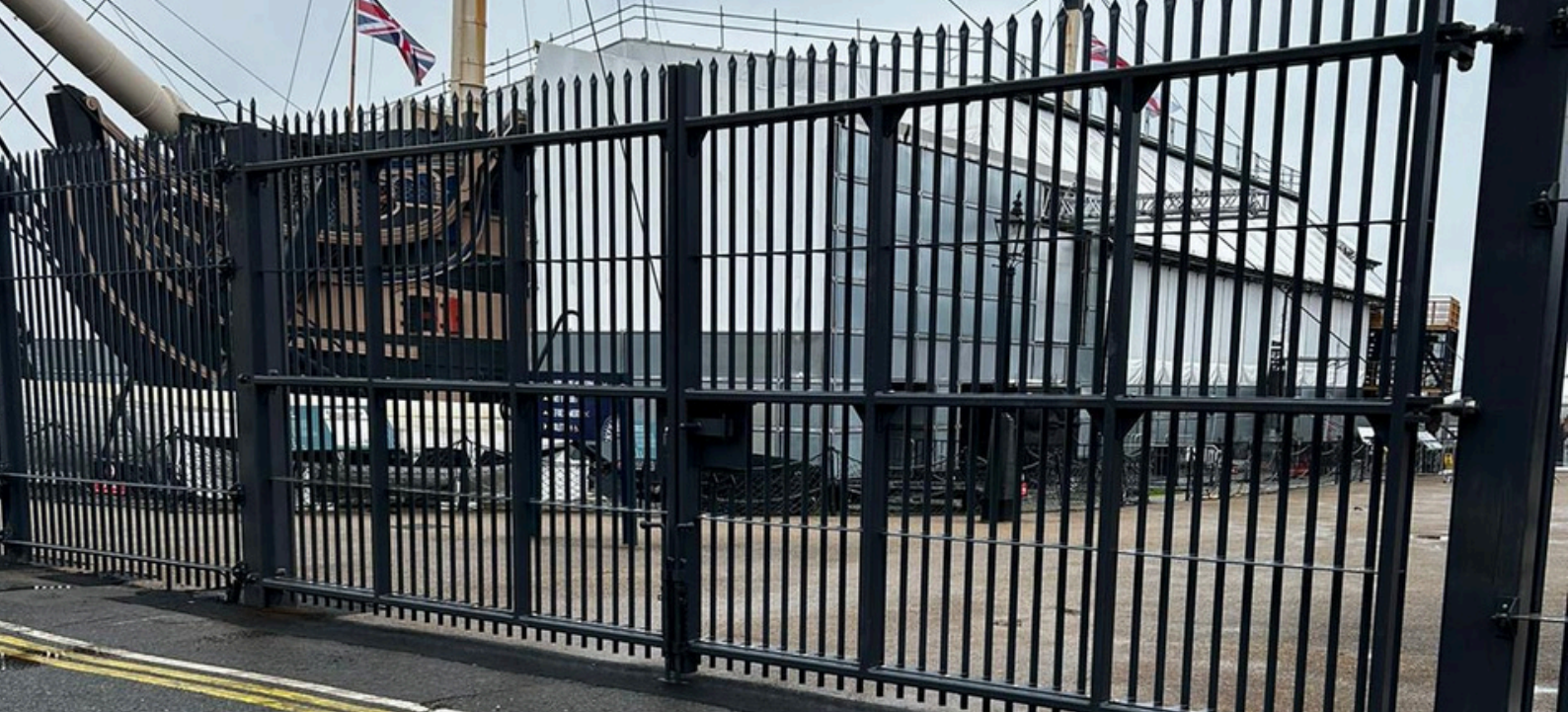
Manufactured using high quality, durable materials that are hot-dip galvanized to enhance lifespan. To be in keeping with the surroundings and history,

HeritageGuard is available with a range of elegant spear or forged heads.

Key Features

- Matching swing gates available
- Patent pending
- Set back rails and narrow gaps make it difficult to climb
- Choice of square, round or tubular fill
- Choice of spear or forged heads
- Concrete or base plated





Specifications

Fence Height (m)	Vertical Type	No. of rails	Post Centres (m)	Post Sections
2.4-3.0	30x30 SHS	4	2.75-3.0	120x120 SHS