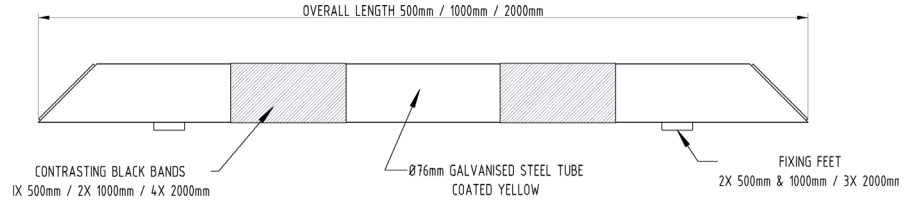
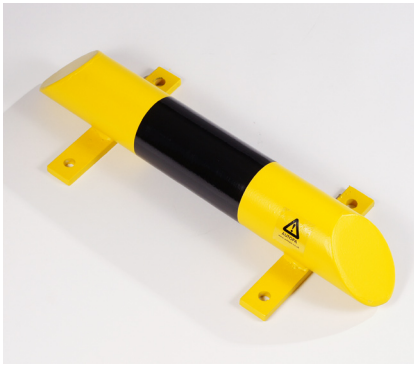




Black And Yellow Low Level Protection Rail



The AUTOPA range of Black & Yellow products are ideal for providing high visibility protection in both internal and external warehousing environments. All products in the range are galvanised mild steel, ensuring their longevity and are designed to take the knocks and bumps that occur in all warehouses.

The Low Level Protection Rail is made in 76mm outside diameter tube, is coated yellow with black reflective bands and is available in 500mm, 1,000mm & 2,000mm long versions (500 & 1,000 versions shown). The product is designed to be located in any location where a physical barrier is required to protect machinery, racking or similar.



<u>Part Number</u>	<u>Description</u>	<u>Weight (kg)</u>
138 177 905	500mm Black & Yellow - Bolt Down	4kg
138 177 910	1000mm Black & Yellow - Bolt Down	6kg
138 177 915	2000mm Black & Yellow - Bolt Down	12kg

Product details

- 3mm wall thickness
- 76mm diameter outside diameter tube
- Black bands - 150mm width
- 500mm complete with 1 reflective band
- 1000mm complete with 2 reflective bands
- 2000mm complete with 4 reflective bands

Installation & use

Bolt down to a suitable concrete surface.
Telescopic, removable and concrete in are supplied with welded fixing spikes to ensure firm ground anchorage into concrete.
Telescopic, removable and concrete in require a suitable excavated hole for installing into concrete.
Products are guaranteed for 12 months (if installed and used correctly).



www.autopa.co.uk
+44 (0)1788 550556

AUTOPA Limited
Cottage Leap, Rugby, Warwickshire CV21 3XP

