



8+



15



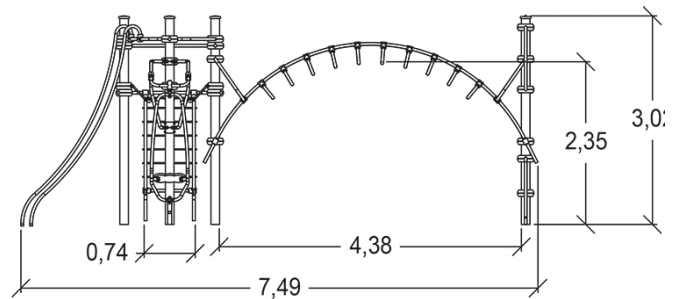
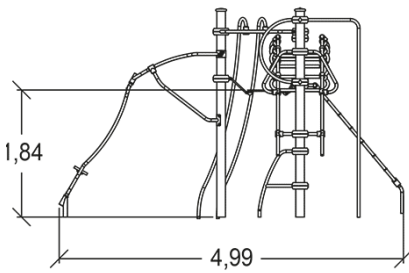
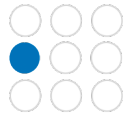
2,4m



1 = 7,92m
2 = 4,99m
3 = 3m



Physical inclusion
Sensory inclusion
Cognitive inclusion



Play value :

9

sliding



x2

meeting



x1

hanging



x1

balancing



x1

rotating



x1

climbing



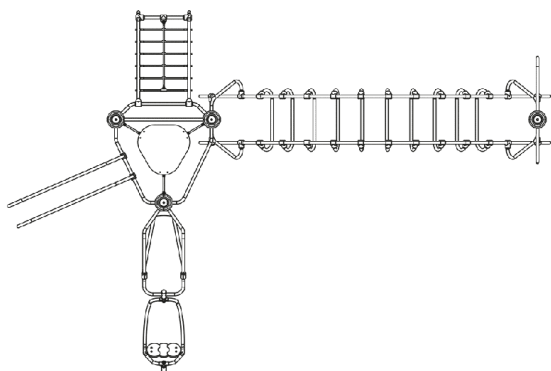
x2

getting across



x1



Components

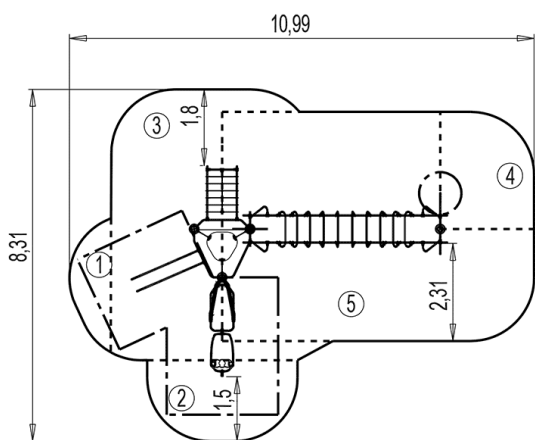


- ① Tour Delta
- ② Gyro
- ③ Speed slide
- ④ Delta Incline net
- ⑤ Great arch
- ⑥ Parrot mast

Installation of equipment

IMPORTANT: It is essential to refer to the installation instructions for information on the size of the safety areas.

-  Impact area (minimum normative surface)
-  Free space



Point de Référence
Setting Out Point
Punto de referencia
Bezugspunkt
Referentiepunt



1	0,60m	4m ²
2	0,70m	6m ²
3	1,95m	18,5m ²
4	2m	6m ²
5	2,4m	33m ²



2



14h00



0.4m³



67.5m²



322kg



53kg

EN
1176