

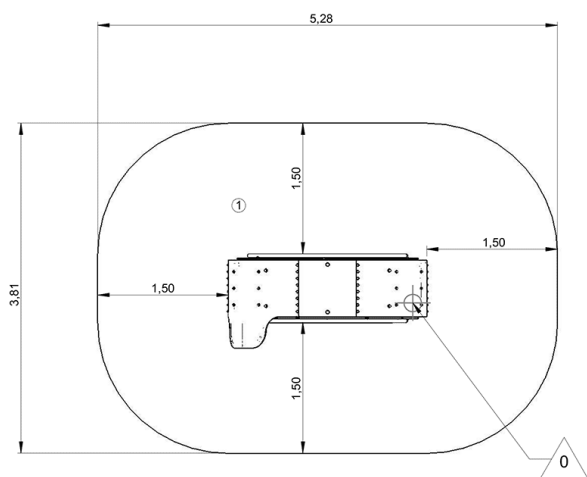






## Installation of equipment

**IMPORTANT:** It is essential to refer to the installation instructions for information on the size of the safety areas.

-  Impact area (minimum normative surface)
-  Free space



		
1	0,7m	18,5m <sup>2</sup>



2



4h00



0.5m<sup>3</sup>



18.5m<sup>2</sup>



363kg



319kg

EN  
1176