



3+



4



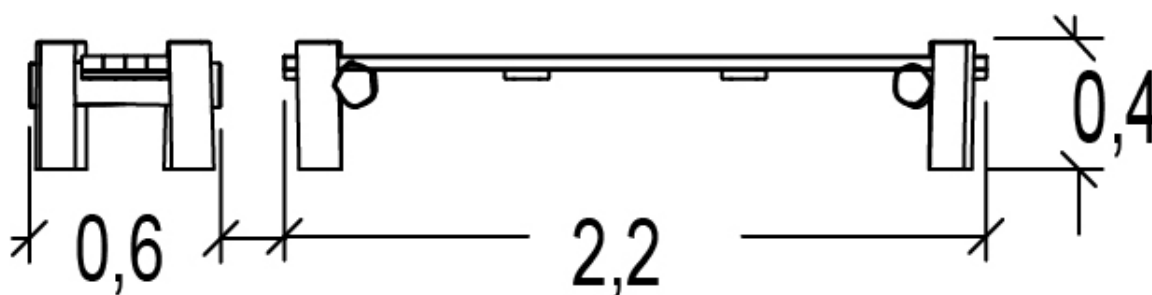
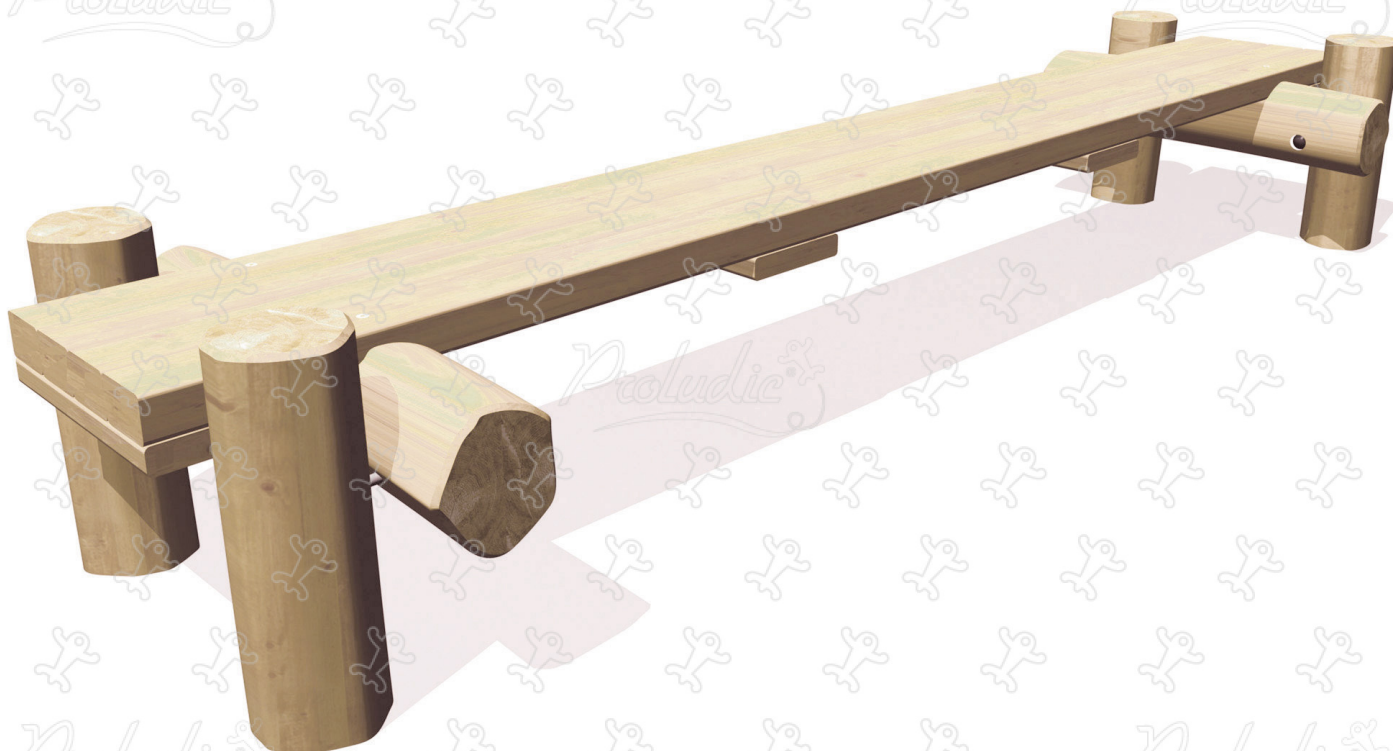
0,6m



1 = 2,2m  
2 = 0,6m  
3 = 0,4m



Physical inclusion  
Sensory inclusion  
Cognitive inclusion



**Play value :** **3**

meeting



x1

balancing



x1

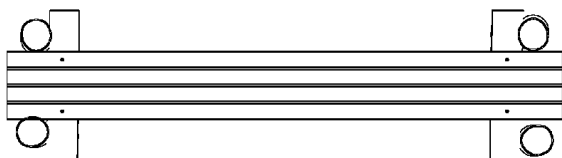
getting across



x1



## Components

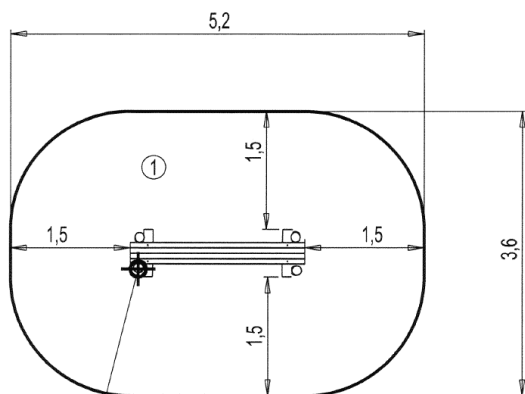
### 1 Bridge





## Installation of equipment

**IMPORTANT:** It is essential to refer to the installation instructions for information on the size of the safety areas.

-  Impact area (minimum normative surface)
-  Free space



Point de Référence  
Setting Out Point  
Punto de referencia  
Bezugspunkt  
Referentiepunt

1	 <0,6m	 17m <sup>2</sup>
---	---	--



2



00h50



0m<sup>3</sup>



17m<sup>2</sup>



81kg



17kg

EN  
1176