



3+



3



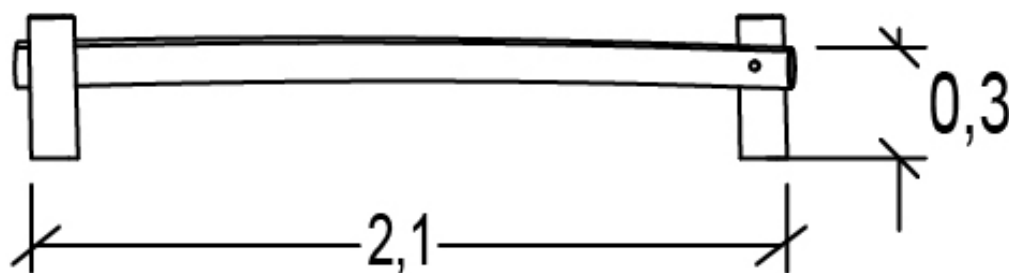
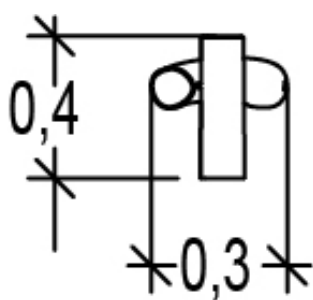
0,6m



1 = 2,1m
2 = 0,3m
3 = 0,4m



Physical inclusion
Sensory inclusion
Cognitive inclusion



Play value : **3**

meeting



x1

balancing



x1

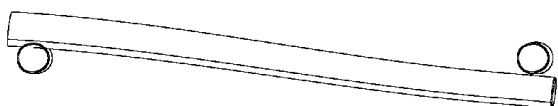
getting across



x1



Components

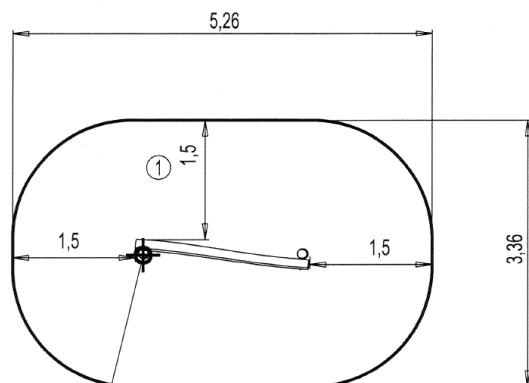
1 Balance Beam





Installation of equipment

IMPORTANT: It is essential to refer to the installation instructions for information on the size of the safety areas.

-  Impact area (minimum normative surface)
-  Free space



Point de Référence
Setting Out Point
Punto de referencia
Bezugspunkt
Referentiepunt

1	 <0,6m	 16m ²
---	--	---



2



00h50



0m³



16m²



44kg



17kg

EN
1176