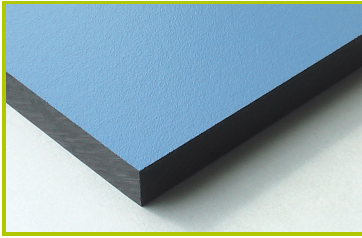




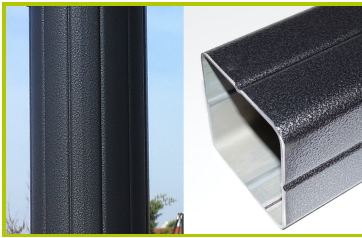
Medieval

(technical specification)

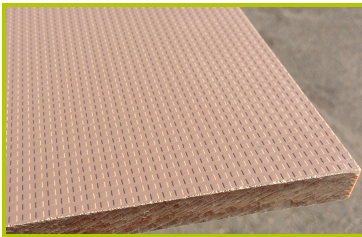
J4702-P



1- **The coloured panels** are made from a 13mm thick compact material (HPL). Robust in construction, it has excellent weather and vandal resistance properties.



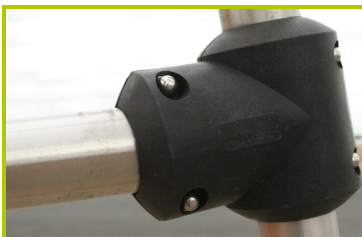
2- **The 95x95mm and 125mm diameter posts** are made of painted galvanised steel. The grained finish has a slightly undulating surface for increased scratch resistance.



3- **The platforms** are made from a 12.5mm thick textured and non-slip compact material (HPL).



4- **The tubes** are made of 40mm diameter stainless steel, guaranteeing lasting durability and reliability of the equipment.



5- **Injection moulded polyamide fixings** connect the posts with the platforms and the various play features. They are non-toxic, flameproof and U.V. resistant. The thickness of the polyamide makes the equipment both strong and vandal resistant.



6- **The tubular slide** is made of rotomoulded polyethylene.



7- The **Kayak slide** is made of rotomoulded polyethylene.



8- The **fixings** are made of stainless or plated steel and protected by anti-vandalism polyamide caps.