



# CASE STUDY

TREE ANCHORING

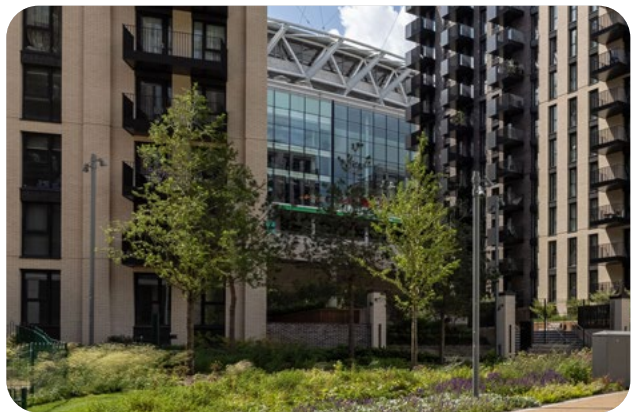


Canada Gardens, London

## OVERVIEW >>>>

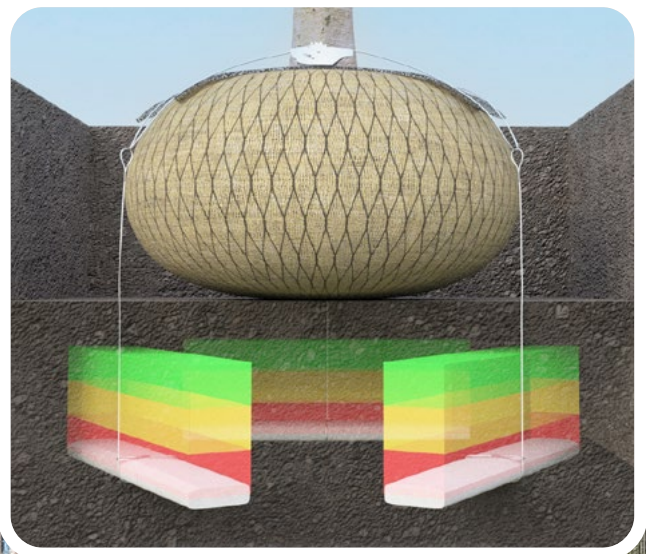
Canada Gardens, a remarkable landscaping project in London, showcases the expertise of Goddards (Landscape Contractors) Limited, an established company with over four decades of experience in both commercial and residential sectors. In 2021, their work on this project, designed by PRP Landscape, earned them a prestigious BALI National Landscape Award.

The site, known as 'Plot E03', is part of the broader Wembley Park masterplan and features a podium landscape on the fourth floor, overlooking a 160-space coach park with the iconic Wembley Stadium as its backdrop. Seven high-rise buildings surround this elevated oasis, creating a unique urban environment in the heart of Brent. The design brief called for a versatile space catering to families, pet owners, children and remote workers. To meet



these diverse needs, the landscape included summerhouses equipped with electricity and Wi-Fi, as well as BBQ and bar areas for entertainment. Encouraging sustainability and community engagement, the design incorporates allotments and raised beds for residents to grow their own produce.

Given the project's elevated location and the surrounding high-rise structures, careful consideration went into plant selection. The team chose heavy standard semi-mature air-potted trees, supplied by Lorenz von Ehren, and secured them using the Platipus Deadman Fixing System with Plati-Mat. These trees not only enhance the visual appeal of the space but also provide privacy, creating a multifunctional urban green space that enhances the quality of life for its residents.



**CONTACT OUR TEAM**

+44 (0) 1737 762300 | [info@platipus-anchors.com](mailto:info@platipus-anchors.com)  
[www.platipus-anchors.com](http://www.platipus-anchors.com)



©2018 PLATIPUS