



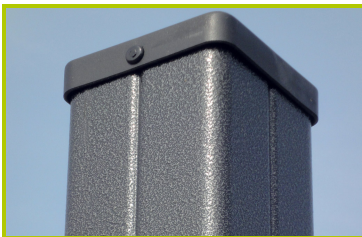
Aquatica

(technical specification)

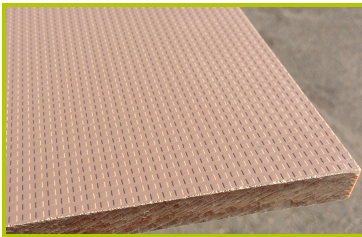
J1961



- 1- **The 125mm diameter posts** are made of painted galvanised steel. The two-tone grey grained finish has a slightly undulating surface for increased scratch resistance. The caps are made of injection moulded polyamide.



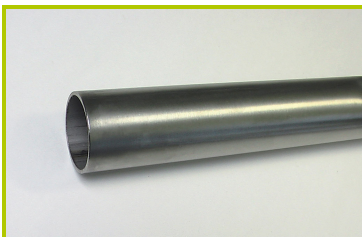
- 2- **The 95 x 95mm posts** are made of painted galvanised steel, ensuring robustness and durability. The caps are made of injection moulded polyamide.



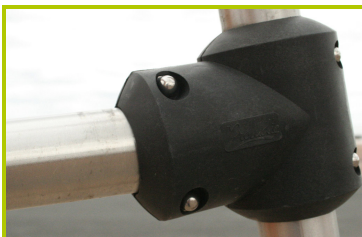
- 3- **The platforms** are made from a 12.5mm thick, textured, non-slip compact material (HPL). Further reinforcement is provided by galvanised steel supports, located on the underside of the platforms.



- 4- **The coloured panels** are made from a 13mm thick compact material (HPL). Robust in construction, it has excellent weather and vandal resistance properties.



- 5- **The tubes** are made of 40mm diameter stainless steel, guaranteeing lasting durability and reliability of the equipment.



- 6- **Injection moulded polyamide fixings** connect the posts with the platforms and the various play features. They are non-toxic, flameproof and U.V. resistant. The thickness of the polyamide makes the equipment both strong and vandal resistant.



7- **The 16mm diameter ropes** are made of galvanised steel cable covered with polyester. The cables are linked together and held in place by injected polyamide spheres.



8- **The sliding surfaces** are made of 2mm thick stainless steel, which is shaped, bent and rolled from one piece.



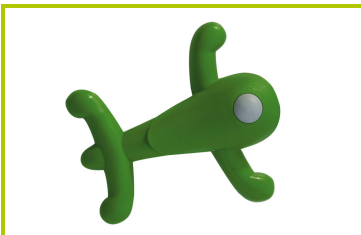
9- **The tunnel** is made of 100% recycled rotomolded polyethylene, 45cm in diameter (RAL 9005).



10-**The one-piece rail** is made of stainless steel, Ø 76.1mm, 3.6mm thick. The trolley is made of stainless steel ensuring its durability.



11-**The grip section of the stainless steel handle** is overmoulded with rubber to give a good grip.



12-**The climbing holds** are made of polypropylene. They are non-toxic, inflammable and shock and UV resistant.



13-**The fixings** are made of stainless or plated steel and protected by anti-vandalism polyamide caps.