

## Highway bridge parapets

All bridge parapet railing is designed to Department of Environment Technical Memorandum (Bridges) No. B.E.5. It conforms to BS 6779 and is manufactured using rectangular hollow section for high strength/weight ratio with limited deflection - the ideal combination for highway bridge parapet.

Design falls into the following categories:

**Group P1:** Vehicle parapets for bridges carrying motorways or roads to motorway standards.

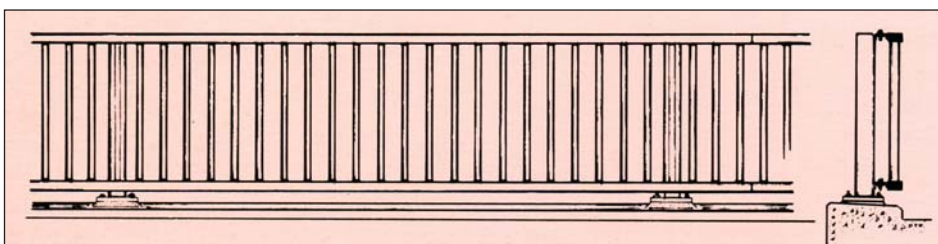
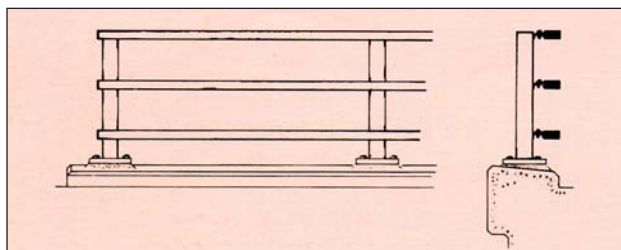
**High Containment:** Vehicle parapets for motorway or roads to motorway standards where "High Containment" of heavy vehicles in excess of P1 standards is desired.

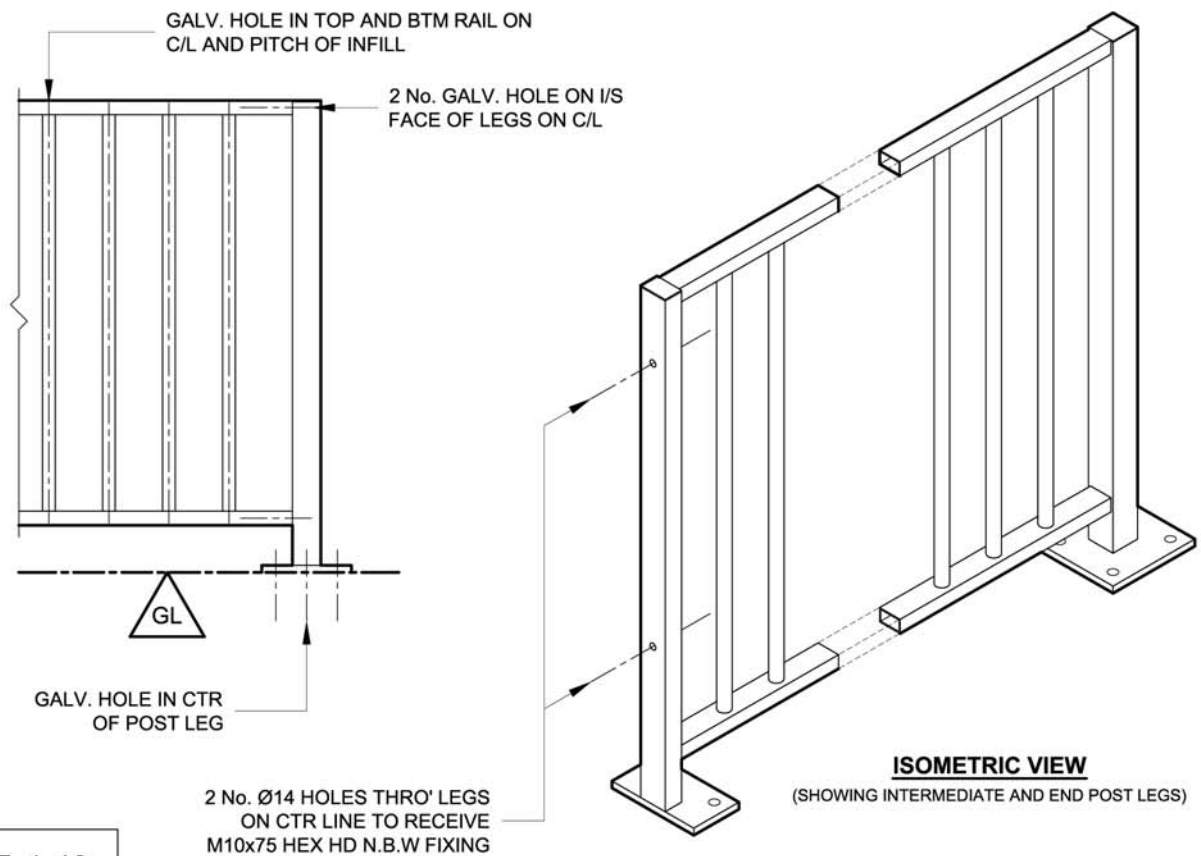
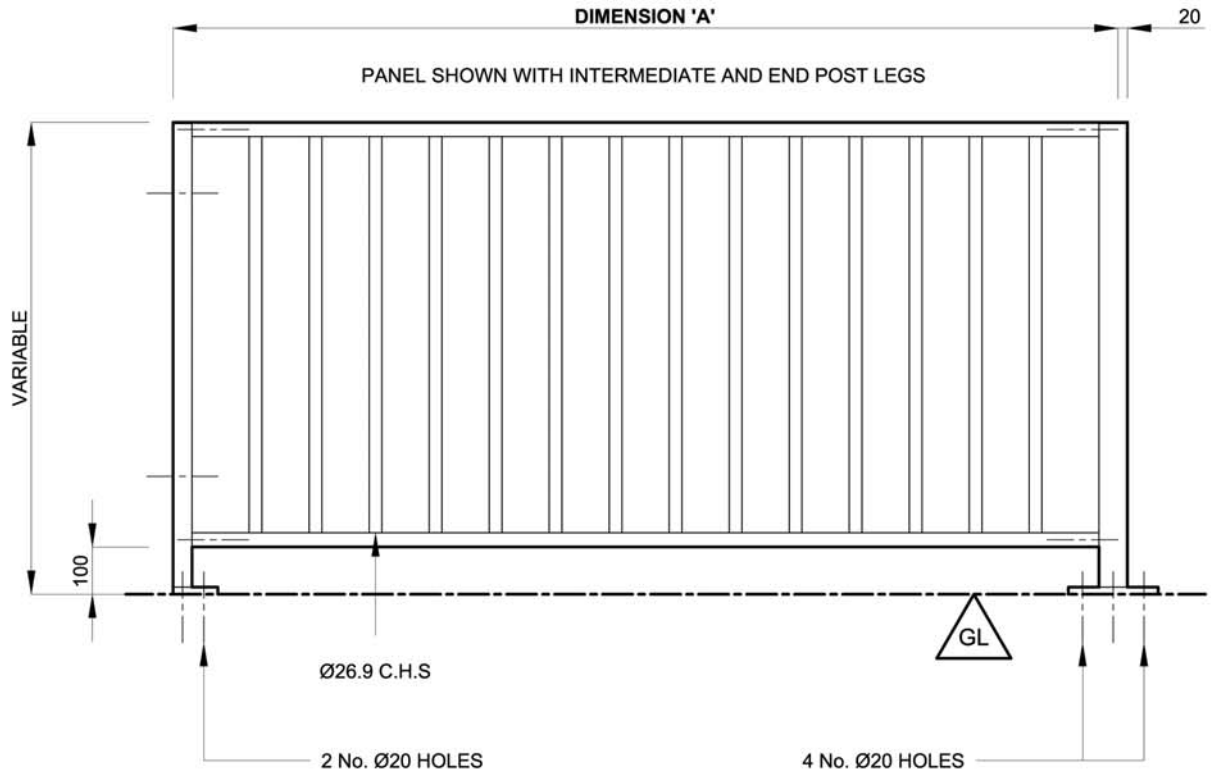
**Group P2:** Vehicle pedestrian parapets for bridges carrying all purpose roads; also accommodation bridges.

**Group P4:** Pedestrian parapets for use on footbridges.

**Group P5:** Variations of the P1, P2 and P4 parapet for bridges crossing over railways.

The standard finish on all types of highway bridge parapet is galvanised to BS 729 after manufacture, but if required the sections can be supplied in a primed condition for subsequent in-situ painting.





SF 4.40

**TECHNICAL NOTES:**

MATERIALS SPECIFICATIONS TO **BSEN10025/BSEN10219**  
VERTICAL BAR INFILL AND PITCHES TO **BS1722 Part 9**  
GALVANIZED FINISH TO **BSEN1461:1999**

**UNIT LENGTHS:**

GUARDRAIL PANELS ARE AVAILABLE IN STANDARD LENGTHS (SEE BELOW), AND CAN BE ORDERED IN NON STANDARD LENGTHS TO SUIT.

**STANDARD PANEL LENGTHS:** 1000mm, 1829mm (6'0"), 2000mm

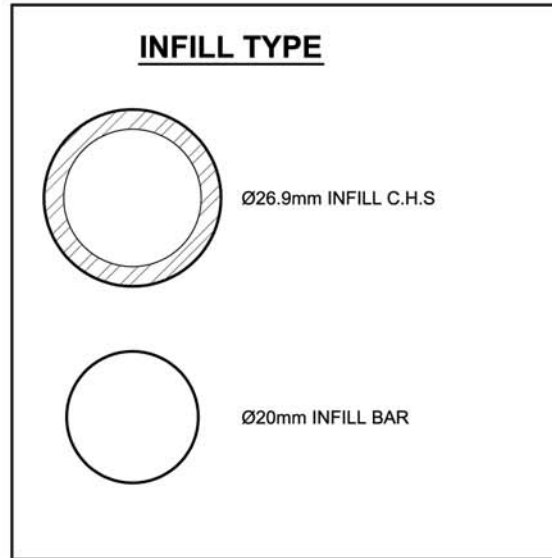
**PANEL INFILL AVAILABLE:**

STANDARD INFILL / STAGGERED INFILL (SEE BELOW)

FOR INFORMATION ON CHOOSING THE CORRECT INFILL PATTERN SEE SECTION 4.70

**ACCESSORIES:**

EACH PANEL WILL BE SUPPLIED WITH 4 No. M10x90 or M10x75  
N.B.W. FIXINGS AS APPROPRIATE.



**MATERIALS:**

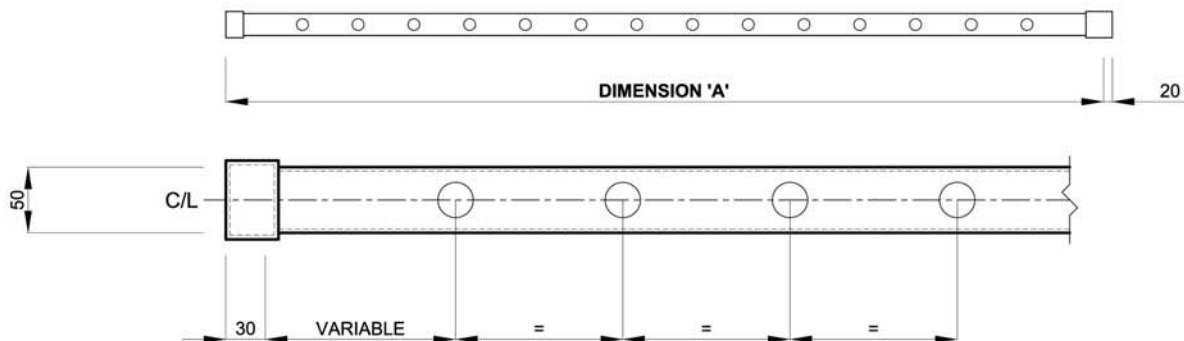
**PANEL SECTION:** 50x30 R.H.S

**INTERMEDIATE POST:** 60x40 R.H.S

**END POST:** 60x60 S.H.S

**BASE PLATES:** 200x200x15 & 200x100x15 DEPENDANT ON POST TYPE

**SECTION 'A-A' STANDARD INFILL PATTERN**



**WHEN SPECIFYING YOUR ORDER PLEASE USE THE FOLLOWING PRODUCT CODE MATRIX:**

- 1) (P4)
- 2) OVERALL PANEL LENGTH (DIM 'A' mm)
- 3) INFILL TYPE (Ø26.9 INFILL / Ø20 INFILL)
- 4) PANEL CONFIG (SINGLE PANEL / INTERMEDIATE PANEL / END PANEL)

**EXAMPLE:** "P4 (2000mm) Ø26.9 INFILL END PANEL "

SF 4.41