



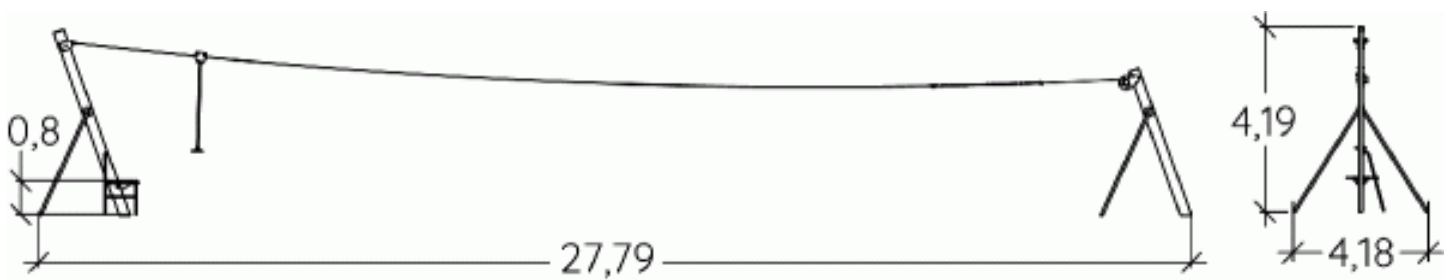
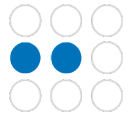
 **4+**
 **1**
 **1,4m**



 1 = 27,79m
 2 = 4,18m
 3 = 4,19m



Physical inclusion
Sensory inclusion
Cognitive inclusion



Play value : **3**

sliding



x1

meeting



x1

getting across

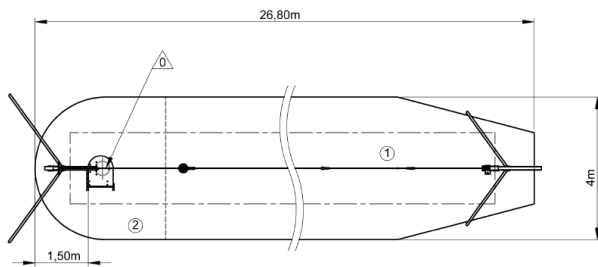


x1

Installation of equipment

IMPORTANT: It is essential to refer to the installation instructions for information on the size of the safety areas.

-  Impact area (minimum normative surface)
-  Free space



1	1m	89m ²
2	1,4m	13,5m ²



2



20h00



3m³



102.5m²



373kg



110kg

