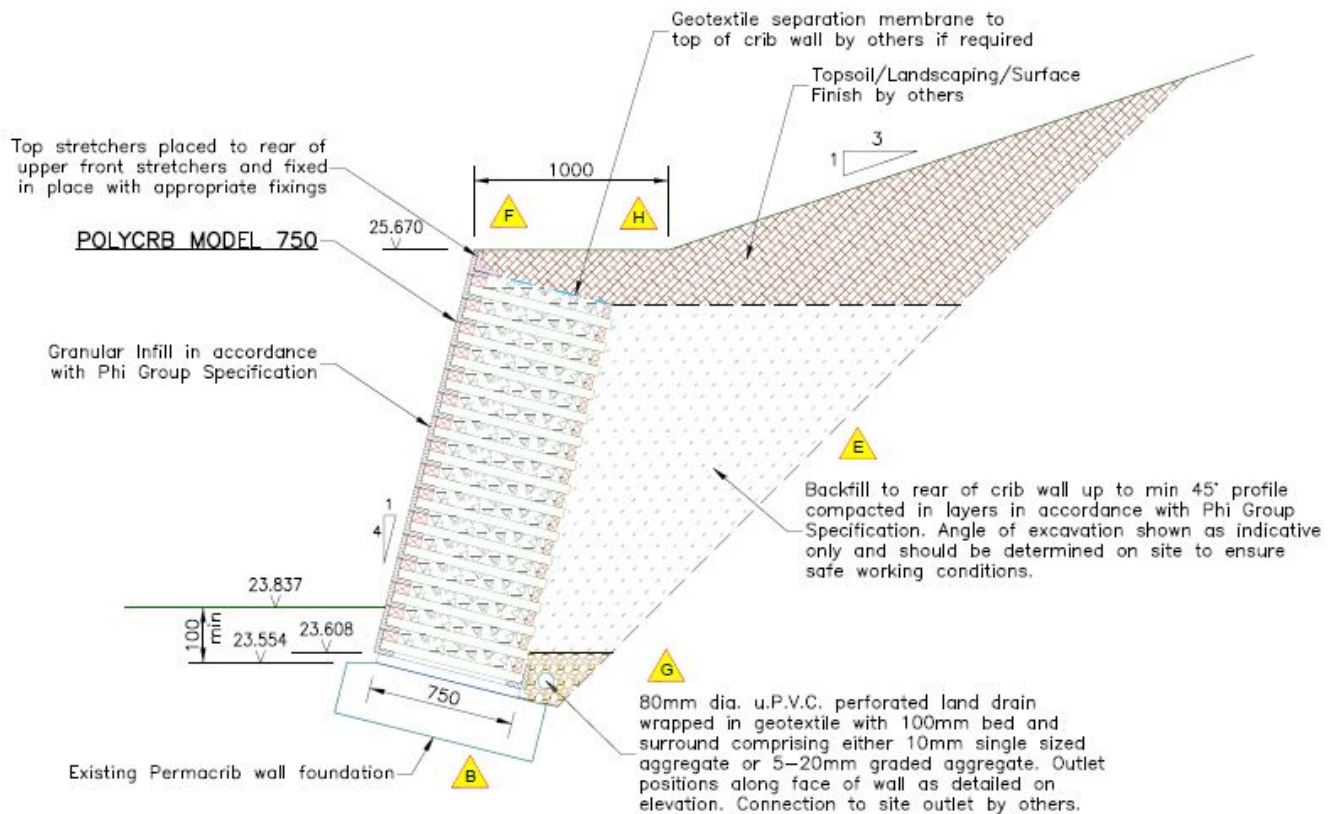


POLYCRIB

Plastic Crib Retaining Wall

The Polycrib recycled plastic crib retaining wall system is a gravity retaining wall and is as an eco-friendly alternative to many other retaining solutions, such as concrete. It is manufactured using waste plastic solely from the UK, so diverts tonnes of waste material from land fill. Phi Group has developed the Polycrib system to be as cost effective as possible, minimising the number of components required. As confirmed by the BBA technical approval process, the Polycrib retaining wall system has a desired service life of 120 years based and has BBA HAPAS certification, making it ideal for use in the harshest of environments.



Polycrib consists of four main elements:

1. Mass concrete foundation
2. Plastic header and stretcher components
3. Granular infill material
4. Granular backfill material

Advantages:

● Cost

Polycrib is a cost-effective alternative to traditional methods of retaining wall construction, using recycled plastic components which also makes it a more sustainable solution.

● Design

Phi Group will carry out a full design service in house using our bespoke software. Our designs are limited to the internal design of the retaining structure including the consideration of overturning, sliding and bearing failure modes. Design information will be supplied to you for incorporation into an overall slope design which is to be the responsibility of you, or a suitably qualified Geotechnical Engineer

● Construction

Polycrib is very quick to construct, with 100m² face area a week easily achievable with a three man gang. If a shorter programme is required then Phi Group have the resources to increase gang size and therefore output. All of our on-site labour is directly employed, so a complete design, supply and installation package is available for peace of mind.

● **Flexibility**

We can provide you with the most economic structure depth for the retained height, especially where retained height decreases over the length of the Polycrib wall. Variations in top of wall or foundation level can be easily accommodated.

● **Face Finish**

The Polycrib system is installed at a 4V:1H batter (76°), so is less imposing than a vertical structure. Phi Group recommend any planting be carried out from the base or top of the wall, to make ongoing maintenance of the vegetation easier. Climb prevention measures are available if required, that are typically installed for the bottom 2.0m of the structure. Various fencing can be accommodated to the top of the Polycrib wall, and will be assessed during our design.



Phi Group offers the full design, supply and construction package for the Polycrib plastic crib retaining wall system nationwide from our three regional offices. We deal with all project sizes and offer a free estimating service to assess the suitability of the Polycrib system and offer advice to add value to your project.

Typical Applications are:-

- Widely used across all sectors, including highways, residential, schools, warehouse and logistic developments, commercial & hospital developments.
- Typically used in a cut situation, but can also be used when raising levels on site.

Head Office

Montis Court
Bouncers Lane
Cheltenham
Gloucestershire GL52 5JG
T: 01242 707600
E: southern@phigroup.co.uk
W: www.phigroup.co.uk

Northern Office

7A Harewood Yard
Off Weardley Lane
Harewood, Leeds LS17 9LF
T: 0113 3607660
E: northern@phigroup.co.uk
W: www.phigroup.co.uk

Scottish Office

15 Pitreavie Court
Pitreavie Business Park
Queensferry Road
Dunfermline KY11 8UU
T: 01383 329400
E: scotland@phigroup.co.uk
W: www.phigroup.co.uk