

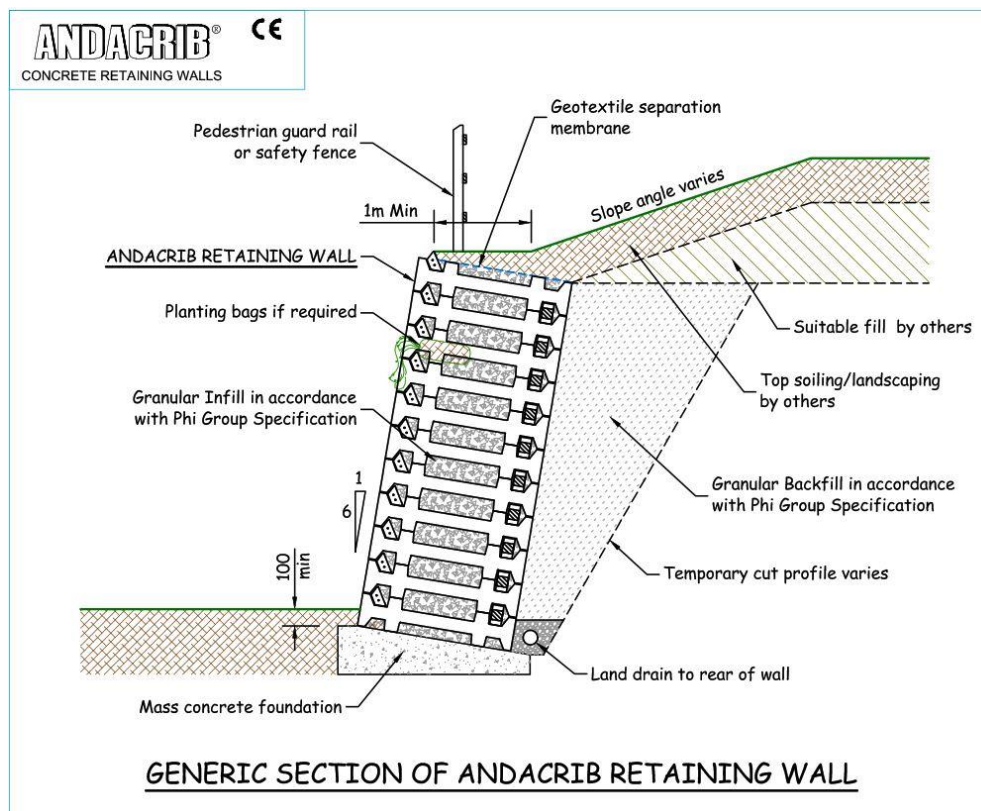
ANDACRIB

Concrete Crib Retaining Wall

The Andacrib concrete system is a cost effective and aesthetically pleasing alternative to traditional retaining walls. A key benefit of the Andacrib is the speed of installation. Once the starter units are cast on the foundation, the concrete units simply interlock together to form the framework which is then infilled and backfilled with a free draining granular material. All components are machine placed so there is little or no manual handling required.

Our Andacrib concrete system which is designed to both BS EN1997-1:2004 and BS EN1992-1-1:2004-Eurocode 2, is manufactured from 50 N/mm² concrete and has a design life of 120 years and holds the new UKCA mark.

The Andacrib system has been used extensively throughout the UK where a tough, durable and maintenance free solution is required.



Andacrib consists of four main elements:

1. Mass concrete foundation
2. Concrete header and stretcher components
3. Granular infill material
4. Granular backfill material

Advantages:

● **Cost**

Andacrib is a cost-effective alternative to traditional methods of retaining wall construction, using concrete components that are delivered to site, it is quick to construct so will save on programme and therefore cost.

● **Design**

Phi Group will carry out a full design service in house using the various Andacrib models. Our designs are limited to the internal design of the retaining structure including the consideration of overturning, sliding and bearing failure modes. Design information will be supplied to you for incorporation into an overall slope design which is to be the responsibility of you, or a suitably qualified Geotechnical Engineer.

● **Construction**

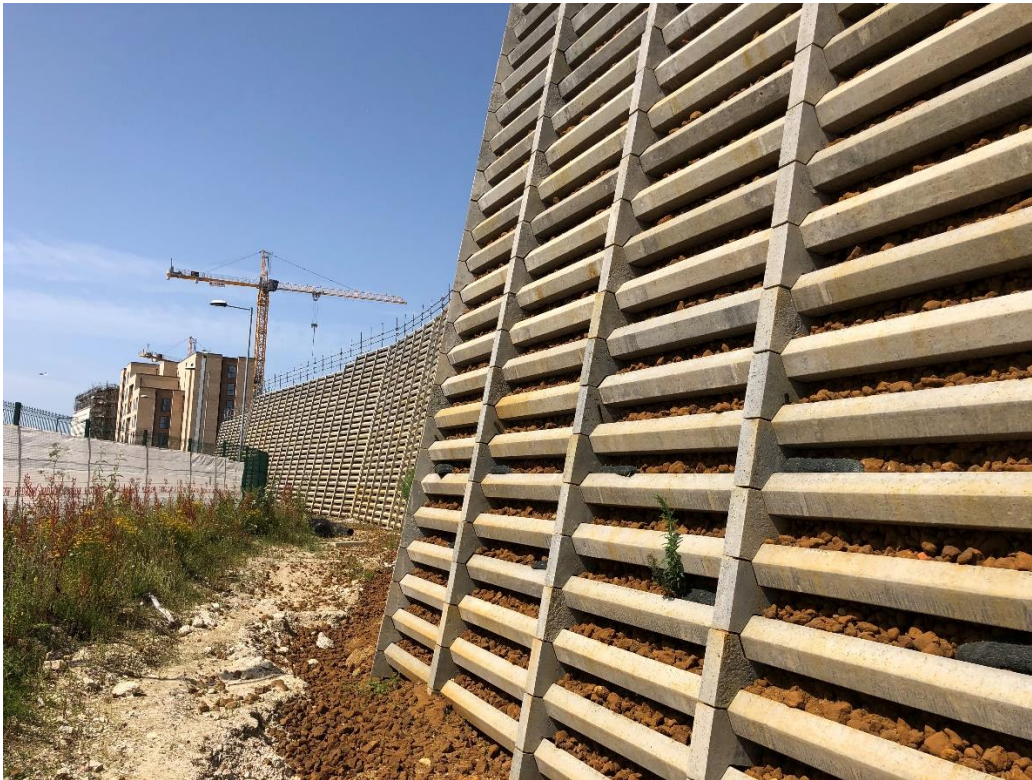
Andacrib is very quick to construct, with 120m² face area a week easily achievable with a three man gang. If a shorter programme is required then Phi Group have the resources to increase gang size and therefore output. All of our on-site labour is directly employed, so a complete design, supply and installation package is available for peace of mind.

● **Flexibility**

We have various model sizes available, so we can provide you with the most economic structure depth for the retained height, especially where retained height decreases over the length of the Andacrib wall. Course heights are 345mm and header stacks are 1800mm apart, so variations in top of wall or foundation level can be easily accommodated, with corners, angle changes and walls built on a radius all possible.

● **Face Finish**

The Andacrib system is installed at a 6V:1H batter (80.5°), so is less imposing than a vertical structure. Planting bags can be installed to provide landscaping to the front face. Climb prevention measures are available if required, that are typically installed for the bottom 2.0m of the structure. Various fencing can be accommodated to the top of the Andacrib wall, and will be assessed during our design.



Phi Group offers the full design, supply, and construction package on a nationwide basis from our three regional offices. We deal with all project sizes and offer a free estimating service to assess the suitability of the Andacrib system and offer advice to add value to your project.

Typical Applications are:-

- Ideal for highways and other infrastructure schemes where a 120 year design life is required.
- Widely used across all sectors, including residential, schools, warehouse and logistic developments, commercial & hospital developments.
- Typically used in a cut situation, but can also be used when raising levels on site.

Head Office

Montis Court
Bouncers Lane
Cheltenham
Gloucestershire GL52 5JG
T: 01242 707600
E: southern@phigroup.co.uk
W: www.phigroup.co.uk

Northern Office

7A Harewood Yard
Off Weardley Lane
Harewood, Leeds LS17 9LF
T: 0113 3607660
E: northern@phigroup.co.uk
W: www.phigroup.co.uk

Scottish Office

15 Pitreavie Court
Pitreavie Business Park
Queensferry Road
Dunfermline KY11 8UU
T: 01383 329400
E: scotland@phigroup.co.uk
W: www.phigroup.co.uk