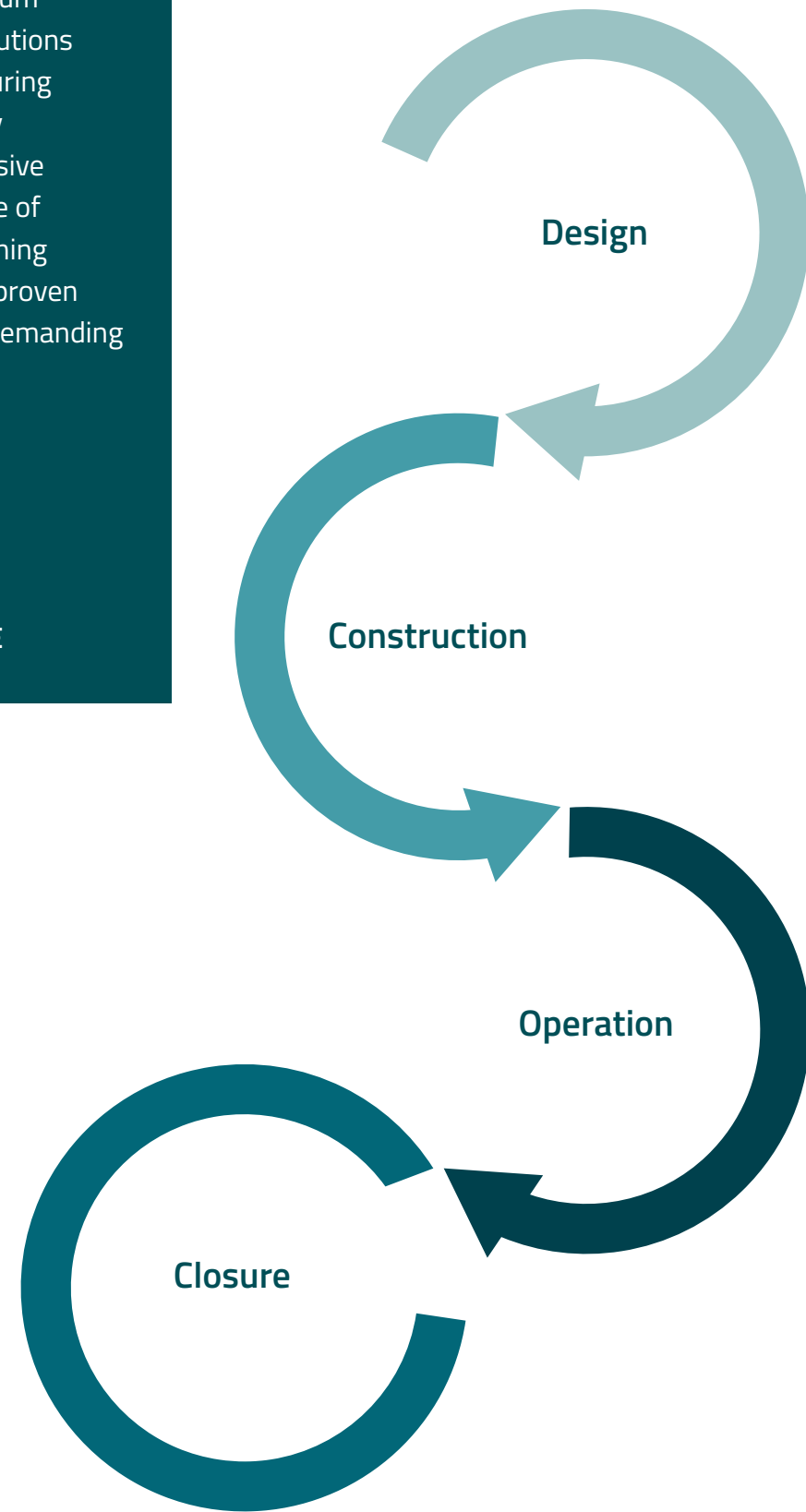


## EVERY STEP OF THE PROJECT

Maccaferri offers full-spectrum expertise and integrated solutions for landfill applications, ensuring sustainability and regulatory compliance. Our comprehensive approach covers every phase of landfill management, combining advanced technologies and proven systems to meet the most demanding environmental challenges.



DISCOVER MORE



**Maccaferri Ltd**  
 T: +(44) 01865 770 555  
 E: info.uk@maccaferri.com

[www.maccaferri.com/uk](http://www.maccaferri.com/uk)

**Republic of Ireland Maccaferri Partner - Geostrong**  
 T: +(353) 01885 1662  
 E: Sales@geostrong.net

[www.geostrong.net](http://www.geostrong.net)



[maccaferri.com/uk](http://maccaferri.com/uk)

# Engineering a Better Solution

Maccaferri's motto is 'Engineering a Better Solution'. We don't merely supply products, but work in partnership with our clients, offering technical expertise to deliver versatile, cost effective and environmentally sound solutions. We aim to build mutually beneficial relationships through the quality of our service and solutions.

### GLOBAL ENGINEERS

In the second half of the 19<sup>th</sup> century, we invented Gabions and dramatically changed the civil engineering landscape. We are still changing it today. We work every day to find better solutions for our clients at every degree of latitude and longitude. Our worldwide network grows through innovation and diversification of sectors of activity and through an increasing range of high quality and environmentally friendly products and applications.

### OFFICINE MACCAFERRI GROUP PROFILE

Founded in 1879, our Group soon became a worldwide reference in the design and development of advanced solutions, with offices in over 70 subsidiaries and 20 factories worldwide.

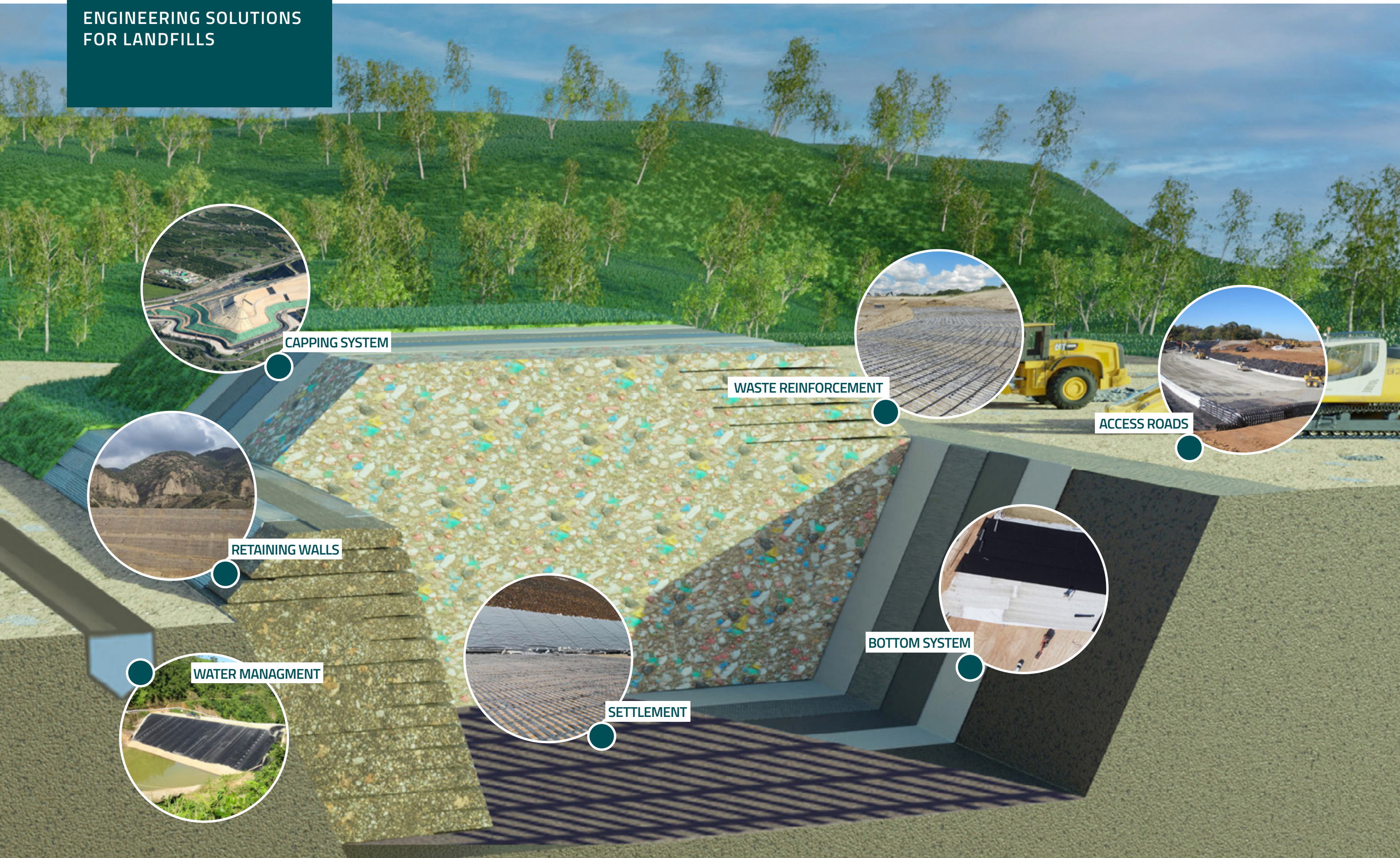
Our mission is to pursue excellence through continuous improvement, while delivering to customers engineered solutions that are innovative, advanced and environmentally friendly. We are committed to outstanding safety, quality and sustainability, to create value for all stakeholders as well as our communities.

- |                                      |   |                          |   |
|--------------------------------------|---|--------------------------|---|
| RETAINING WALLS & SOIL REINFORCEMENT | SOIL STABILIZATION & PAVEMENTS                              | DRAINAGE OF STRUCTURES   | FENCING & WIRE                          |
| HYDRAULIC WORKS                      | BASAL REINFORCEMENT   | TUNNELLING               | AQUACULTURE NETS/CAGES                  |
| ROCKFALL PROTECTION & SNOW BARRIERS  | COASTAL PROTECTION, MARINE STRUCTURES & PIPELINE PROTECTION | LANDSCAPE & ARCHITECTURE | CONCRETE FLOORING, PRECAST & OTHER USES |
| EROSION CONTROL                      | ENVIRONMENT, DEWATERING & LANDFILLS                         | SAFETY & NOISE BARRIERS  | INDUSTRIAL MANUFACTURING                |

The images represented are merely for illustrative purposes and are not to be considered as technical prescriptions or instructions of the products herein © Officine Maccaferri S.p.A.



# ENGINEERING SOLUTIONS FOR LANDFILLS



CAPPING SYSTEM



WASTE REINFORCEMENT



ACCESS ROADS



RETAINING WALLS



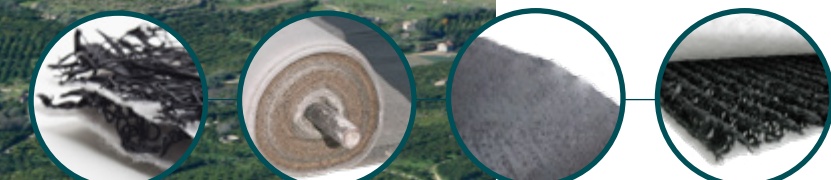
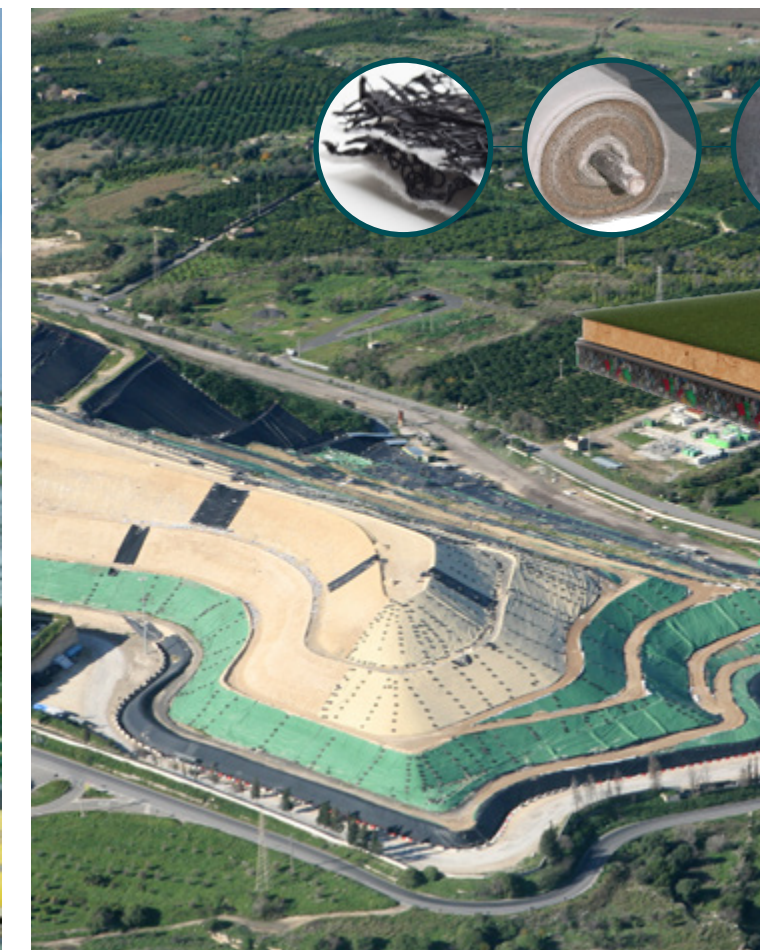
WATER MANAGEMENT



SETTLEMENT

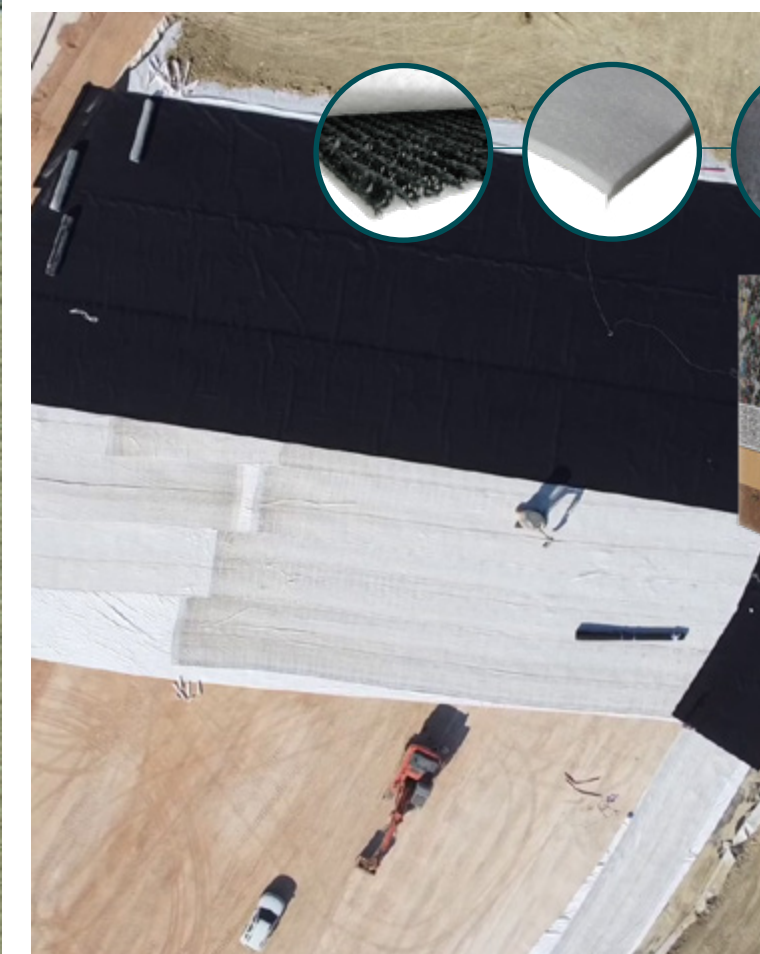


BOTTOM SYSTEM



CAPPING SYSTEM

Capping systems are essential for the proper closure and environmental protection of landfills. Maccaferri offers a complete range of solutions for landfill capping, ensuring long-term performance, stability, and sustainability.



BOTTOM LINING SYSTEM

Bottom lining systems are crucial to prevent leachate contamination and protect groundwater in landfill sites. Maccaferri provides comprehensive solutions for landfill lining, ensuring durability, and environmental compliance.