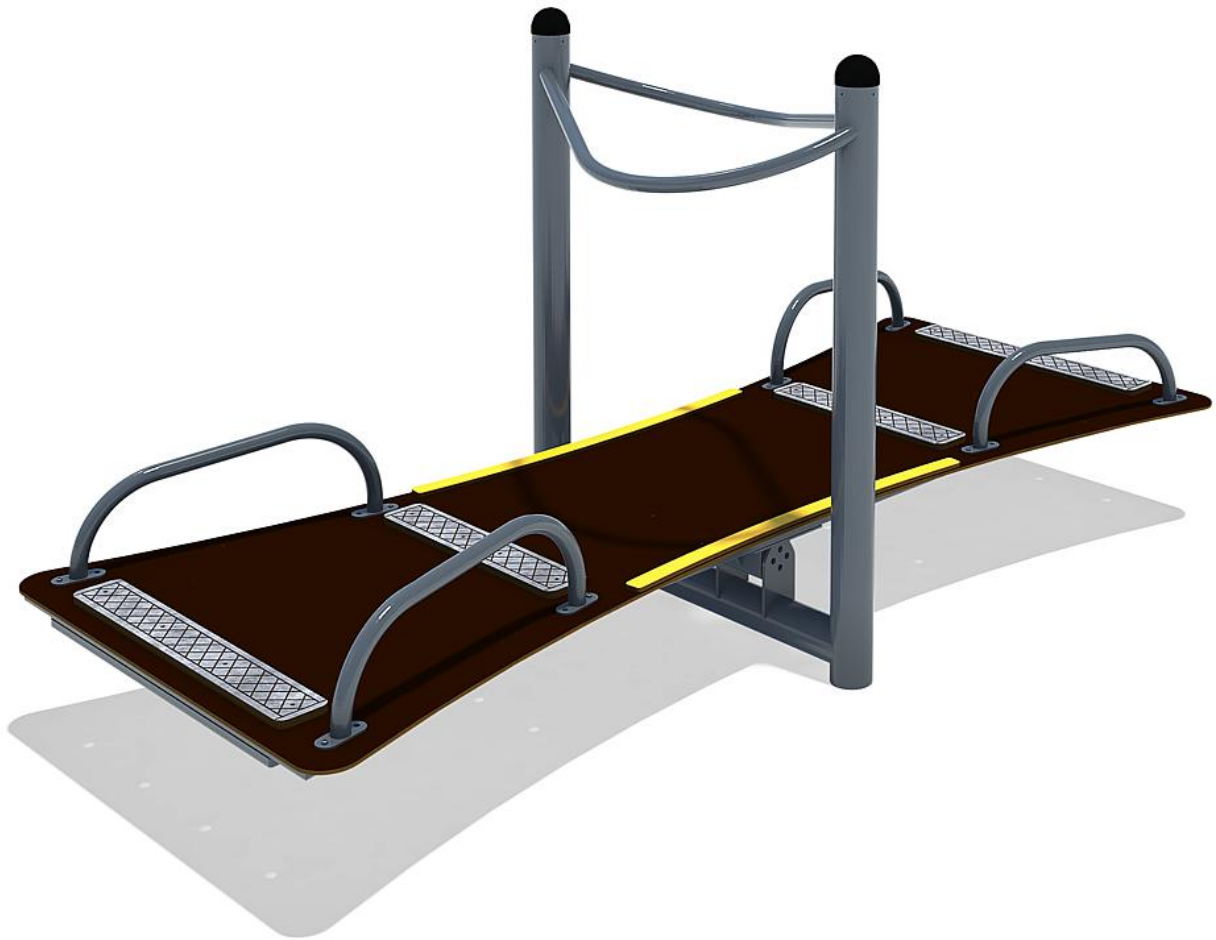


5 64 008 0

# Integration Seesaw metal



Age indication



Inclusion



Fitness



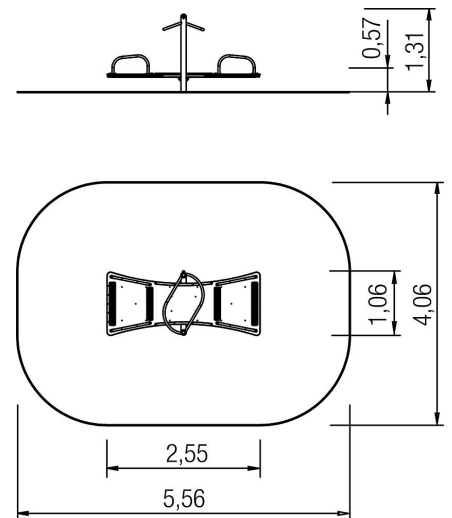
Speed



Social skills

## Scope of delivery

1x integration seesaw: steel galvanised and powder-coated, HPL






# Integration Seesaw metal



## Technical data

	Material	Steel powder., HPL
	Minimum space	5,56x4,06x2,37 m
	Impact protection net	21,0 m <sup>2</sup>
	Free falling height	57 cm
	Ground constitution GE/NL/B	at least concrete
	Ground constitution all except GE/NL/B	at least concrete
	Size	2,55x1,06x1,31 m

## Installation information

	Foundations	1x CF
	Fundamentlevel	ET 800
	CF concrete	0,50 m <sup>3</sup>