

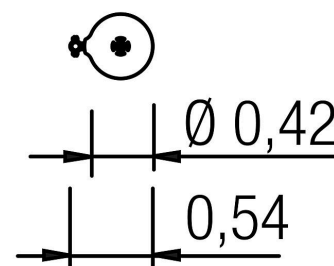
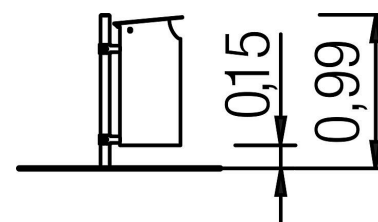
5 60 378 0

Waste bin Oxalis



Scope of delivery

1x waste bin Oxalis: powder-coated steel, stainless steel











5 60 378 0

Waste bin Oxalis



Technical data

	Material	Steel powder., stainless steel
	Minimum space	-
	Impact protection net	-
	Free falling height	-
	Ground constitution GE/NL/B	-
	Ground constitution all except GE/NL/B	-
	Size	0,54x0,99 m, 60 l
	Heaviest section	45 kg

Installation information

	Foundations	1 x CF
	Fundamentlevel	FL 3
	Assembly	1 person/1,5 h