



RECYCLED PLASTIC

FREESTANDING NOTICE BOARD

Our **recycled plastic notice boards** offer a durable, eco-friendly solution for public spaces. Combining the strength and weather resistance needed for outdoor use with a design that suits both traditional and modern settings, they're ideal for parks, schools, and community areas.

Available in single or double door options, each board features secure, lockable doors and is easy to maintain. Made from recycled materials, they provide long-lasting performance while supporting sustainability and responsible resource use.

Product features

- Wood effect recycled plastic and stainless steel construction
- 100% recyclable
- No maintenance required
- Can be supplied with or without a header board
- Robust locks
- Gas struts to support doors when open
- Tough 4mm clear polycarbonate window
- Magnetic back board – magnets included
- Vent holes to minimise condensation
- Standard sizes A2, A1 and A0
- 1 year manufacturer's warranty

Specification applies to the standard product. Our range of options usually allow us to accommodate any differences you may require. Please contact us and we will be happy to support you in developing this specification to meet your requirements.

Option delete/ update as appropriate

Manufacturer: Fitzpatrick Woolmer,
Unit 7 Lakeside Park, Neptune Close,
Rochester, Kent, ME2 4LT.
Tel: 01634 711 771
Email: info@fwdp.co.uk

Material: Polystyrene foam

Origin: UK

Certification: 100% recycled plastic waste

Finish: Cedar effect

Metal: Stainless steel

Grade: 304

Finish: Powdercoat to BS EN 12206:2021 Part 1

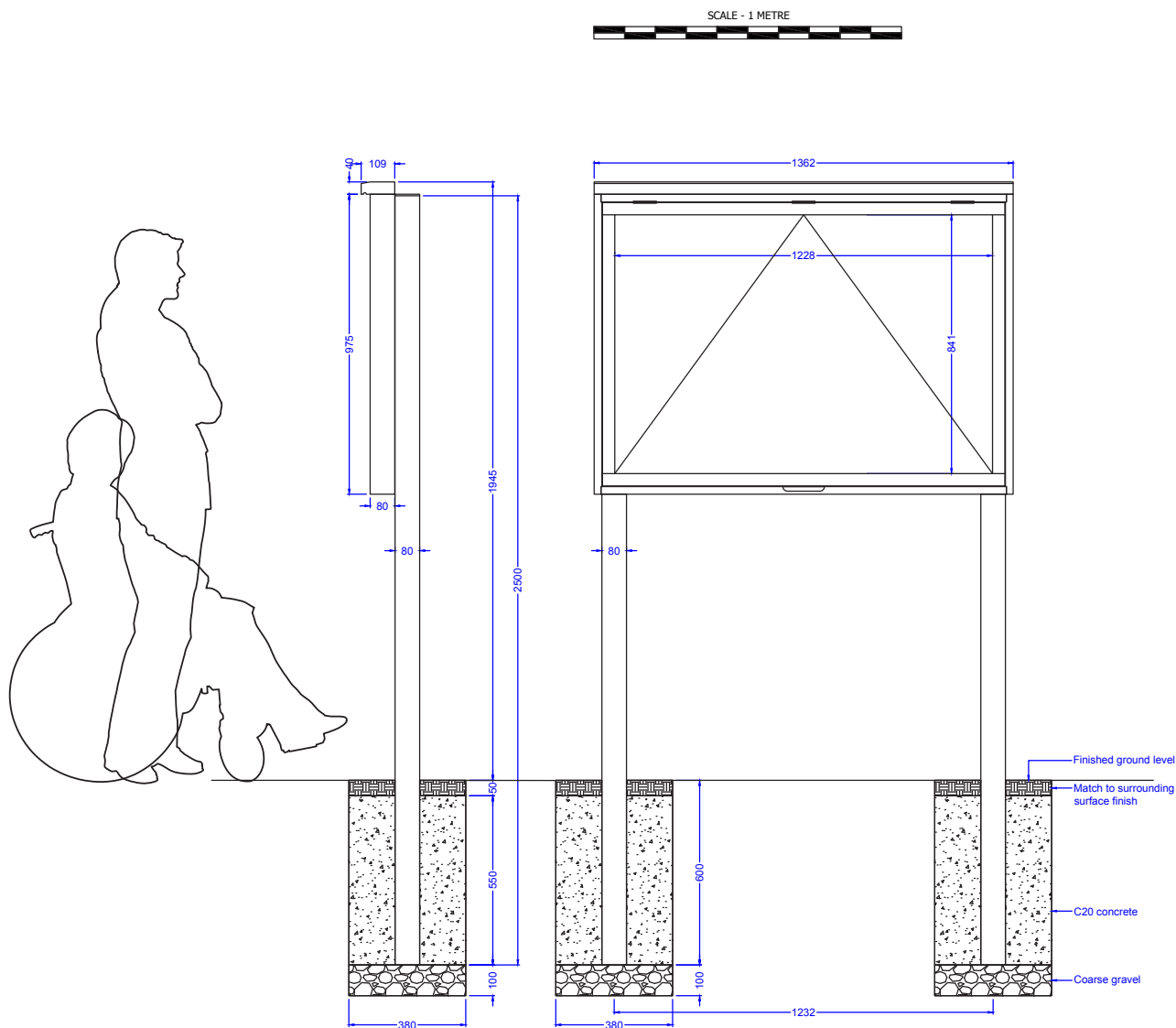
Colour: RAL 9005 Black

Weight: 69kg

Installation: Posts extend 600mm below ground level

Guarantee: One year manufacturer's warranty

Note:
All dimensions are indicative only.
Footing details are subject to
soil conditions and structural
engineers recommendations.



Specification applies to the standard product. Our range of options usually allow us to accommodate any differences you may require. Please contact us and we will be happy to support you in developing this specification to meet your requirements.

Option delete/ update as appropriate

Manufacturer: Fitzpatrick Woolmer,
Unit 7 Lakeside Park, Neptune Close,
Rochester, Kent, ME2 4LT.
Tel: 01634 711 771
Email: info@fwdp.co.uk

Material: Polystyrene foam

Origin: UK

Certification: 100% recycled plastic waste

Finish: Cedar effect

Metal: Stainless steel

Grade: 304

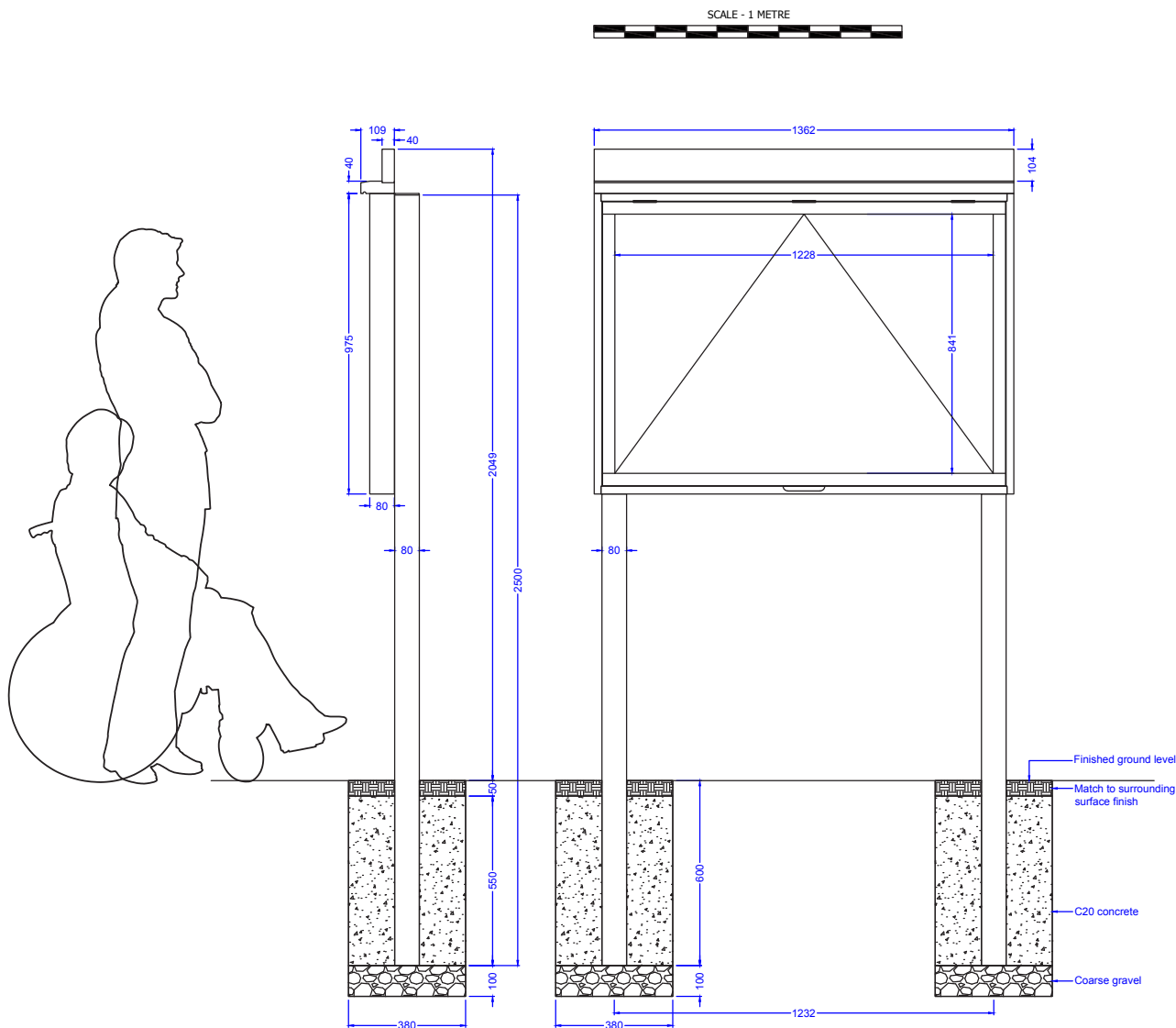
Finish: Powdercoat to BS EN 12206:2021 Part 1

Colour: RAL 9005 Black

Weight: 73kg

Installation: Posts extend 600mm below ground level

Guarantee: One year manufacturer's warranty



Note:
All dimensions are indicative only.
Footing details are subject to
soil conditions and structural
engineers recommendations.

Specification applies to the standard product. Our range of options usually allow us to accommodate any differences you may require. Please contact us and we will be happy to support you in developing this specification to meet your requirements.

Option delete/ update as appropriate

Manufacturer: Fitzpatrick Woolmer,
Unit 7 Lakeside Park, Neptune Close,
Rochester, Kent, ME2 4LT.
Tel: 01634 711 771
Email: info@fwdp.co.uk

Material: Polystyrene foam

Origin: UK

Certification: 100% recycled plastic waste

Finish: Cedar effect

Metal: Stainless steel

Grade: 304

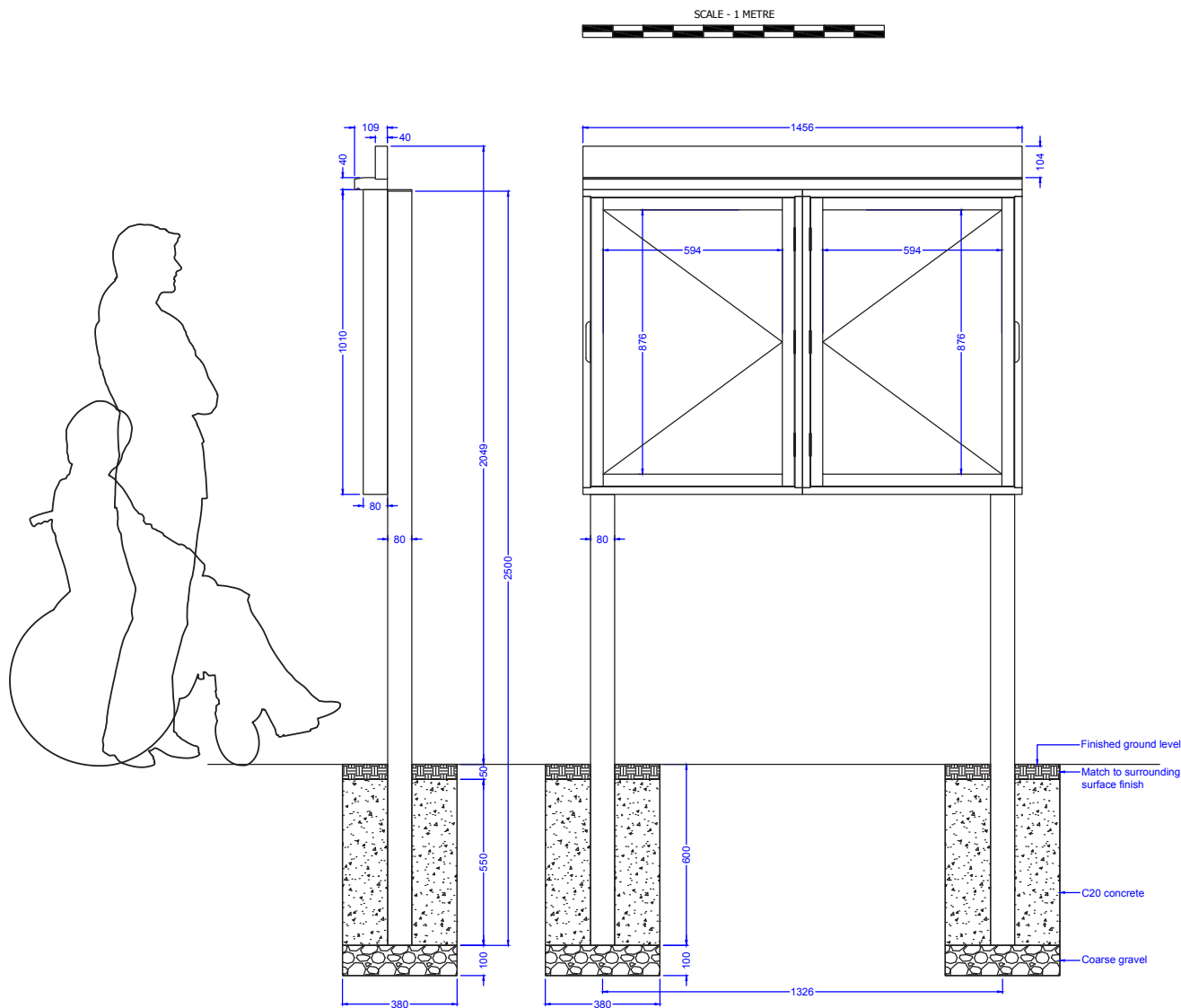
Finish: Powdercoat to BS EN 12206:2021 Part 1

Colour: RAL 9005 Black

Weight: 80kg

Installation: Posts extend 600mm below ground level

Guarantee: One year manufacturer's warranty



Note:
All dimensions are indicative only.
Footing details are subject to
soil conditions and structural
engineers recommendations.

Specification applies to the standard product. Our range of options usually allow us to accommodate any differences you may require. Please contact us and we will be happy to support you in developing this specification to meet your requirements.

Option delete/ update as appropriate

Manufacturer: Fitzpatrick Woolmer,
Unit 7 Lakeside Park, Neptune Close,
Rochester, Kent, ME2 4LT.
Tel: 01634 711 771
Email: info@fwdp.co.uk

Material: Polystyrene foam

Origin: UK

Certification: 100% recycled plastic waste

Finish: Cedar effect

Metal: Stainless steel

Grade: 304

Finish: Powdercoat to BS EN 12206:2021 Part 1

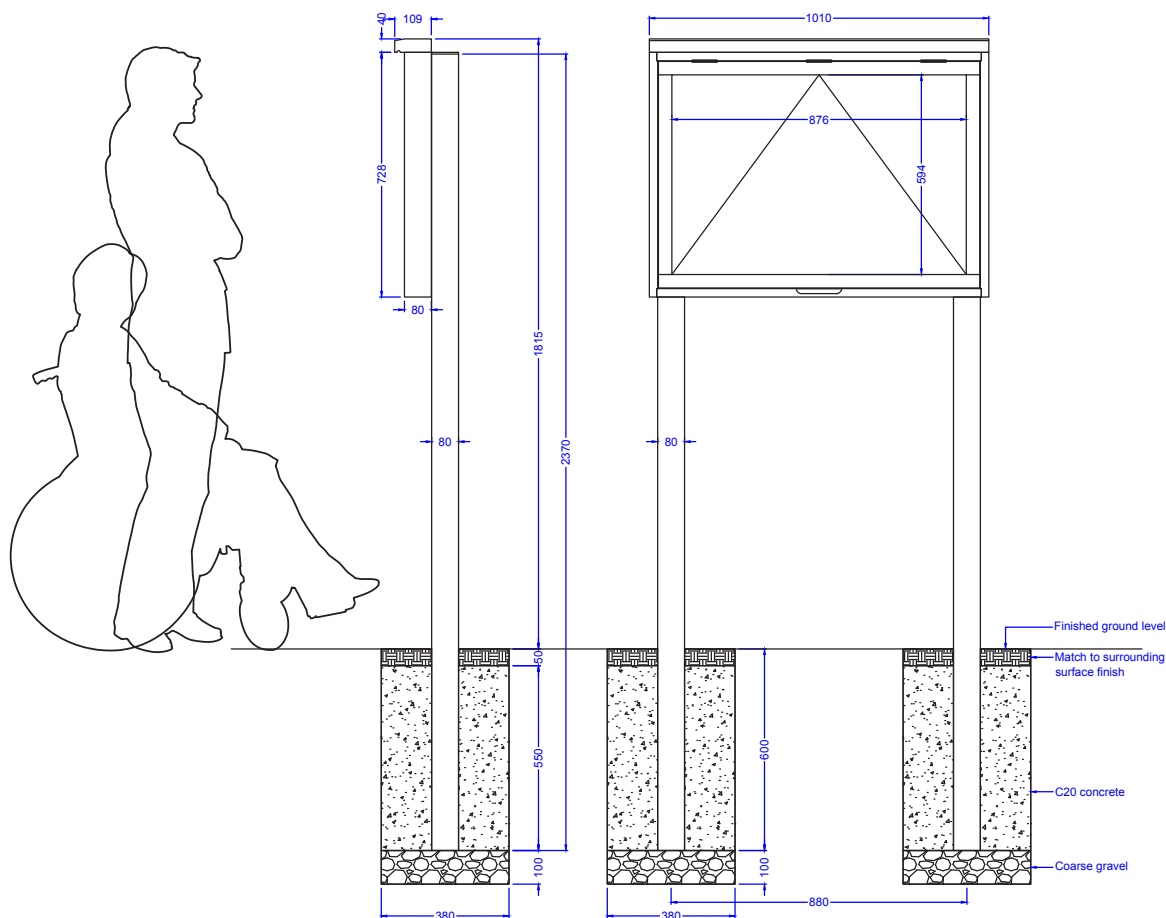
Colour: RAL 9005 Black

Weight: 51kg

Installation: Posts extend 600mm below ground level

Guarantee: One year manufacturer's warranty

SCALE - 1 METRE



Note:
All dimensions are indicative only.
Footing details are subject to
soil conditions and structural
engineers recommendations.

Specification applies to the standard product. Our range of options usually allow us to accommodate any differences you may require. Please contact us and we will be happy to support you in developing this specification to meet your requirements.

Option delete/ update as appropriate

Manufacturer: Fitzpatrick Woolmer,
Unit 7 Lakeside Park, Neptune Close,
Rochester, Kent, ME2 4LT.
Tel: 01634 711 771
Email: info@fwdp.co.uk

Material: Polystyrene foam

Origin: UK

Certification: 100% recycled plastic waste

Finish: Cedar effect

Metal: Stainless steel

Grade: 304

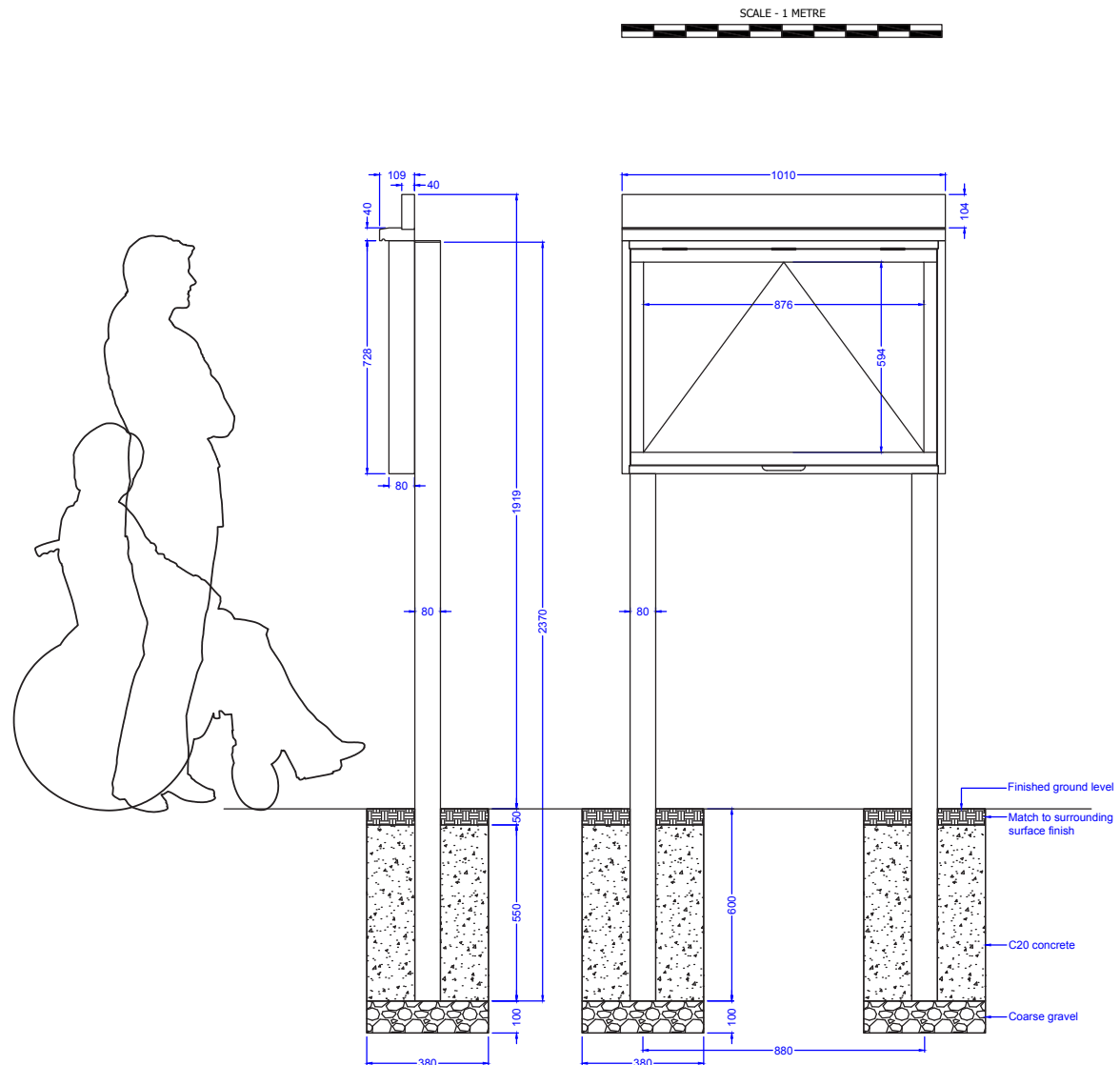
Finish: Powdercoat to BS EN 12206:2021 Part 1

Colour: RAL 9005 Black

Weight: 54kg

Installation: Posts extend 600mm below ground level

Guarantee: One year manufacturer's warranty



Note:
All dimensions are indicative only.
Footing details are subject to
soil conditions and structural
engineers recommendations.

Specification applies to the standard product. Our range of options usually allow us to accommodate any differences you may require. Please contact us and we will be happy to support you in developing this specification to meet your requirements.

Option delete/ update as appropriate

Manufacturer: Fitzpatrick Woolmer,
Unit 7 Lakeside Park, Neptune Close,
Rochester, Kent, ME2 4LT.
Tel: 01634 711 771
Email: info@fwdp.co.uk

Material: Polystyrene foam

Origin: UK

Certification: 100% recycled plastic waste

Finish: Cedar effect

Metal: Stainless steel

Grade: 304

Finish: Powdercoat to BS EN 12206:2021 Part 1

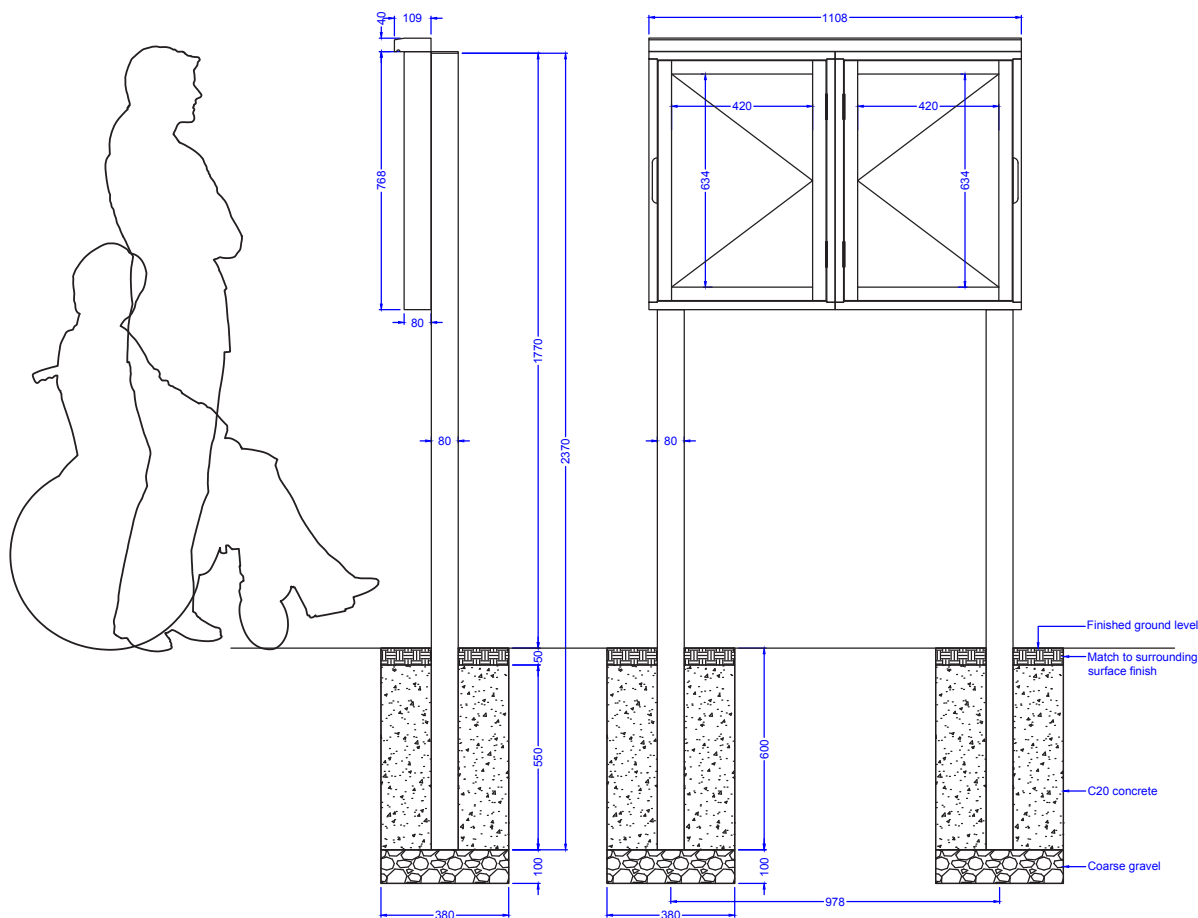
Colour: RAL 9005 Black

Weight: 57kg

Installation: Posts extend 600mm below ground level

Guarantee: One year manufacturer's warranty

SCALE - 1 METRE



Note:
All dimensions are indicative only.
Footing details are subject to
soil conditions and structural
engineers recommendations.

Specification applies to the standard product. Our range of options usually allow us to accommodate any differences you may require. Please contact us and we will be happy to support you in developing this specification to meet your requirements.

Option delete/ update as appropriate

Manufacturer: Fitzpatrick Woolmer,
Unit 7 Lakeside Park, Neptune Close,
Rochester, Kent, ME2 4LT.
Tel: 01634 711 771
Email: info@fwdp.co.uk

Material: Polystyrene foam

Origin: UK

Certification: 100% recycled plastic waste

Finish: Cedar effect

Metal: Stainless steel

Grade: 304

Finish: Powdercoat to BS EN 12206:2021 Part 1

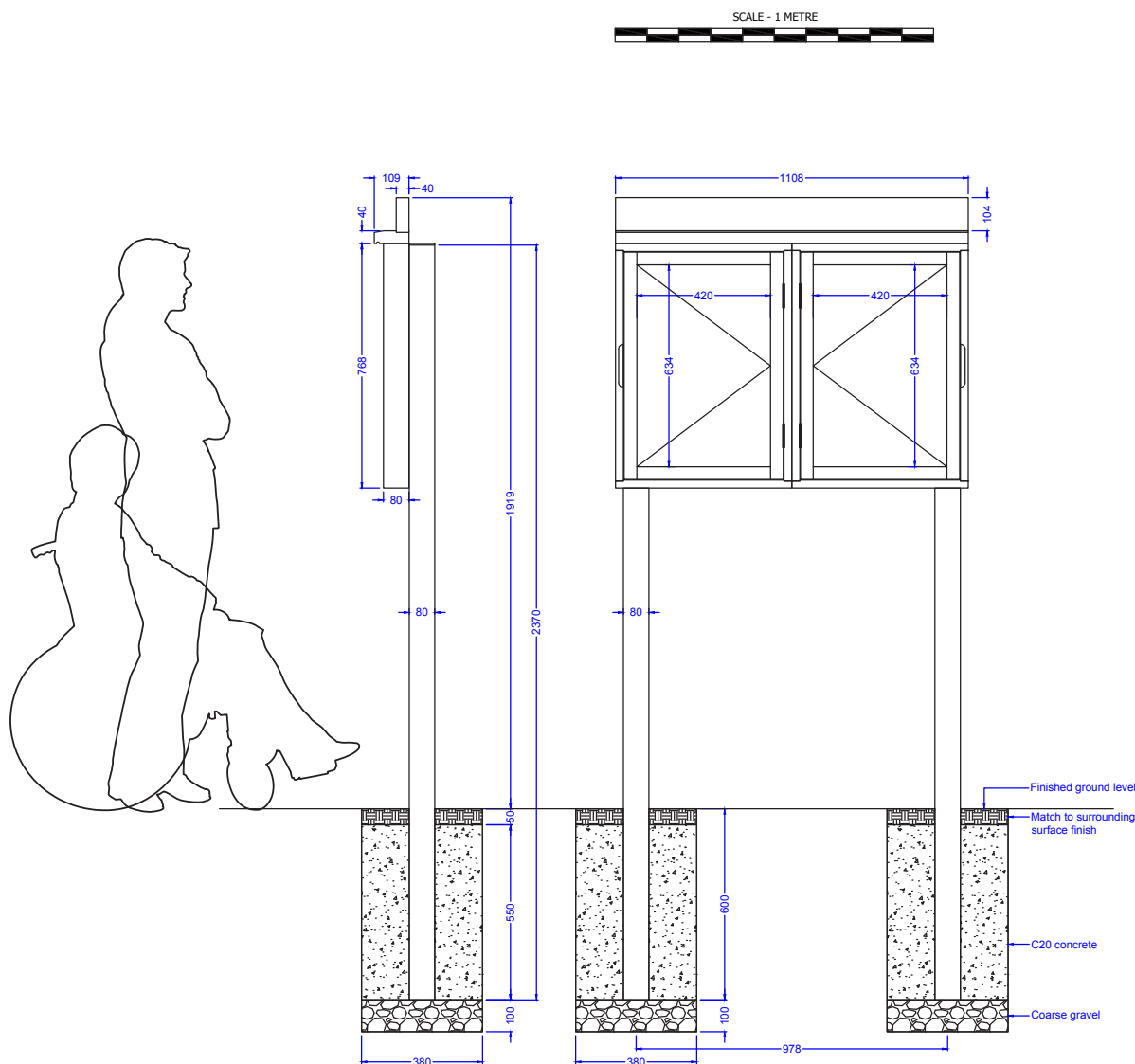
Colour: RAL 9005 Black

Weight: 60kg

Installation: Posts extend 600mm below ground level

Guarantee: One year manufacturer's warranty

Note:
All dimensions are indicative only.
Footing details are subject to
soil conditions and structural
engineers recommendations.



Specification applies to the standard product.
Our range of options usually allow us to accommodate any differences you may require.
Please contact us and we will be happy to support you in developing this specification to meet your requirements.

Option delete/ update as appropriate

Manufacturer: Fitzpatrick Woolmer,
Unit 7 Lakeside Park, Neptune Close,
Rochester, Kent, ME2 4LT.
Tel: 01634 711 771
Email: info@fwdp.co.uk

Material: Polystyrene foam

Origin: UK

Certification: 100% recycled plastic waste

Finish: Cedar effect

Metal: Stainless steel

Grade: 304

Finish: Powdercoat to BS EN 12206:2021 Part 1

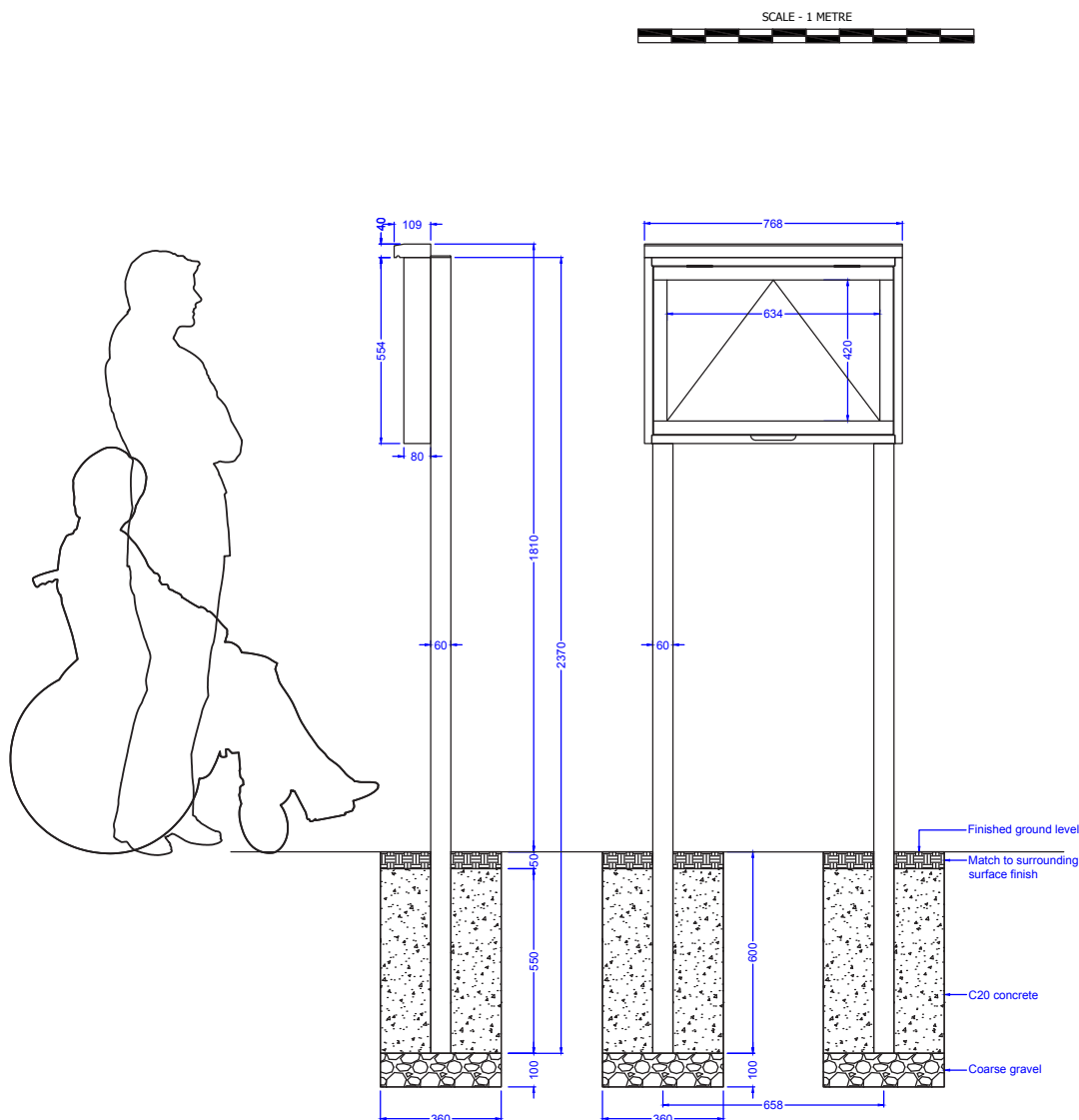
Colour: RAL 9005 Black

Weight: 42kg

Installation: Posts extend 600mm below ground level

Guarantee: One year manufacturer's warranty

Note:
All dimensions are indicative only.
Footing details are subject to
soil conditions and structural
engineers recommendations.



Specification applies to the standard product. Our range of options usually allow us to accommodate any differences you may require. Please contact us and we will be happy to support you in developing this specification to meet your requirements.

Option delete/ update as appropriate

Manufacturer: Fitzpatrick Woolmer,
Unit 7 Lakeside Park, Neptune Close,
Rochester, Kent, ME2 4LT.
Tel: 01634 711 771
Email: info@fwdp.co.uk

Material: Polystyrene foam

Origin: UK

Certification: 100% recycled plastic waste

Finish: Cedar effect

Metal: Stainless steel

Grade: 304

Finish: Powdercoat to BS EN 12206:2021 Part 1

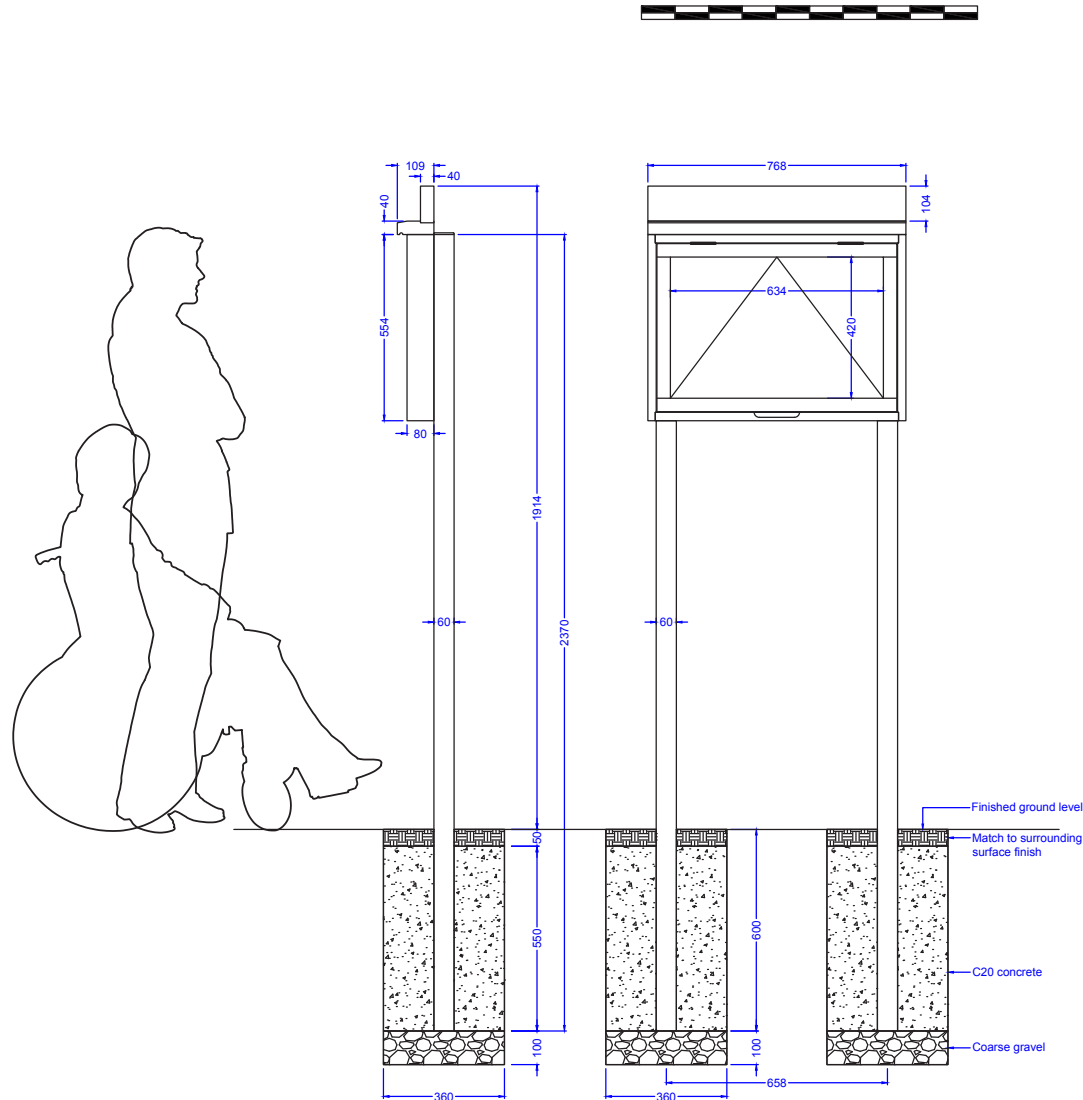
Colour: RAL 9005 Black

Weight: 44kg

Installation: Posts extend 600mm below ground level

Guarantee: One year manufacturer's warranty

SCALE - 1 METRE



Note:
All dimensions are indicative only.
Footing details are subject to
soil conditions and structural
engineers recommendations.