

climbing trunk Juda



Age indication



Fitness



Balance



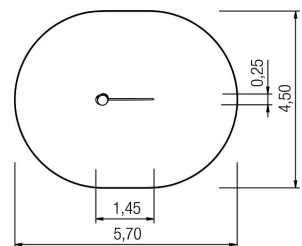
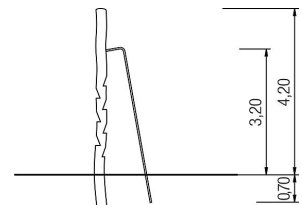
Social skills



Speed

Scope of delivery


- 1x climbing trunk with notched footsteps
- 1x stainless steel fireman's pole





climbing trunk Juda



Technical data

	Material	Robinia natural
	Minimum space	5,70x4,50x4,20 m
	Impact protection net	22,0 m ²
	Free falling height	230 cm
	Ground constitution GE/NL/B	at least sand
	Ground constitution all except GE/NL/B	at least sand
	Size	145x25x420 cm

Installation information

	Foundations	2x CF
	Fundamentlevel	ET 700