



Age indication



Fitness



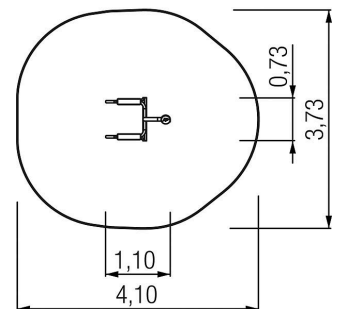
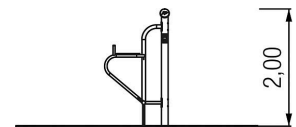
Fine motor skills



Balance









Scope of delivery

1x active-station: stainless steel, HDPE





Technical data

	Material	Stainless steel, HDPE
	Minimum space	4,10x3,73x3,40 m
	Impact protection net	2,5 m ²
	Free falling height	120 cm
	Ground constitution GE/NL/B	impact-attenuating tiles
	Ground constitution all except GE/NL/B	impact-attenuating tiles
	Size	1,10x0,73x2,00 m, backrest height 120 cm
	mx. number of users	1

Installation information

	Foundations	1x CF
	Fundamentlevel	ET 0
	Assembly	2 persons/2 h