

GREEN FACED REINFORCED SOIL SLOPE SYSTEM

Green Terramesh® is a unique and simple to install soil reinforcement system with a sloping vegetative face finish. It is ideal for use where a natural, environment enhancing aesthetic is preferred.

Green Terramesh® can be used either alone or in conjunction with our ParaGrid® or ParaDrain® geogrids depending on the height of the reinforced soil structure.



Green Terramesh® is an environmentally friendly modular system. When used with ParaGrid® or ParaDrain®, suitable site-won materials can often be used as structural backfill to the reinforced soil slope.

This has a triple environmental benefit to the client:

1. No need for expensive quarried granular materials to be imported for structural backfill
2. Reduction of the disposal of site-won soils into landfill
3. Fewer truck movements on roads around the project site



Features and benefits

- M Rapid assembly:** Preassembled unit with components factory-fitted ready for erection on site
- M PoliMac® coated:** 120 year design life plus
- M No external formwork:** Welded mesh panel and bracing struts hold the face at the correct angle during construction
- M Simple installation:** No bodkin or connection is required between geogrid and Green Terramesh® unit
- M Green finish:** Gives lush green finish
- M Certified:** BBA HAPAS certified & UKCA marked

Uses of Green Terramesh®

- M Terraces on development sites**
- M Wing walls**
- M Whenever level changes on a site need retention**
- M Acoustic and safety bunds**
- M Reinforced soil slopes where differential settlement could be an issue**



GREEN TERRAMESH®

GREEN FACED REINFORCED SOIL SLOPE SYSTEM

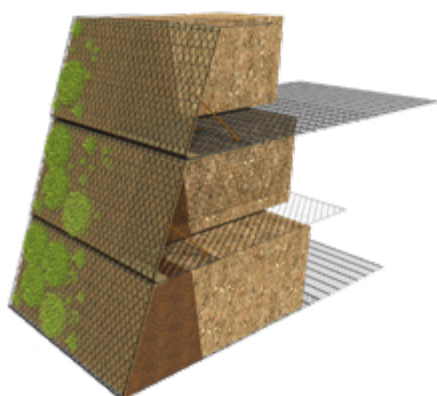
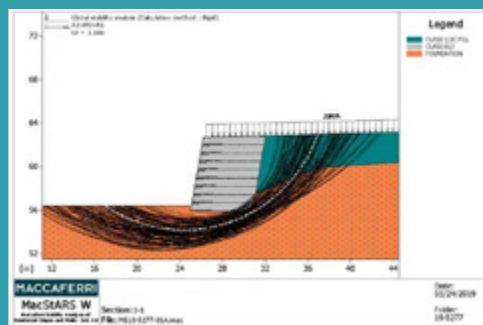


Environmental Product Declaration (EPD) in accordance with ISO 14025 and EN 15804:A1
 EPD reg no: EPD-Kiwa-EE-00384-EN
 www.kiwa.com

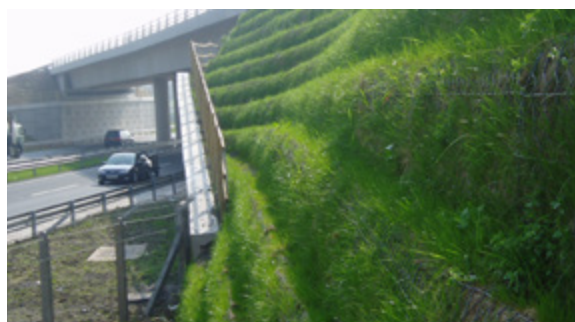
We believe in limiting the impact construction has on our environment. **Green Terramesh®** has an Environmental Product Declaration providing transparent information on the environmental impact of manufacturing the product. This enables clients to compare alternative solutions for use within their projects

Design

- MacSTARs – for designing geogrid reinforced walls and slopes
- Use ParaGrid®/ParaDrain® for taller slopes and/or accommodating higher loads
- Design life: Heavily GalMac® galvanised wire with additional PoliMac® coating offers a system design life of >120 years plus



Vegetative front face



Vegetating face detail

Simple installation steps

- Unit is erected on site
- Bracing struts hold face at correct angle
- Place ParaGrid®/ParaDrain® geogrid if required
- Place and compact structural backfill onto geogrid tails
- Place quality topsoil and suitable seed mix for 300mm immediately behind face of unit to enable vegetation establishment
- Repeat with next unit



Slopes of magnitude

Maccaferri Ltd

T: +(44) 01865 770 555

E: info.uk@maccaferri.com

www.maccaferri.com/uk

Republic of Ireland Maccaferri Partner - Geostrong

T: +(353) 01885 1662

E: Sales@geostrong.net

www.geostrong.net