

What Type of LED Handrailing Is Best

Well-designed illuminated handrails can provide dark sky and ecologically-sensitive lighting for pathways, steps and footbridges. LED lighting can be specified as individual luminaires or linear strip lights. What are the benefits of each approach?

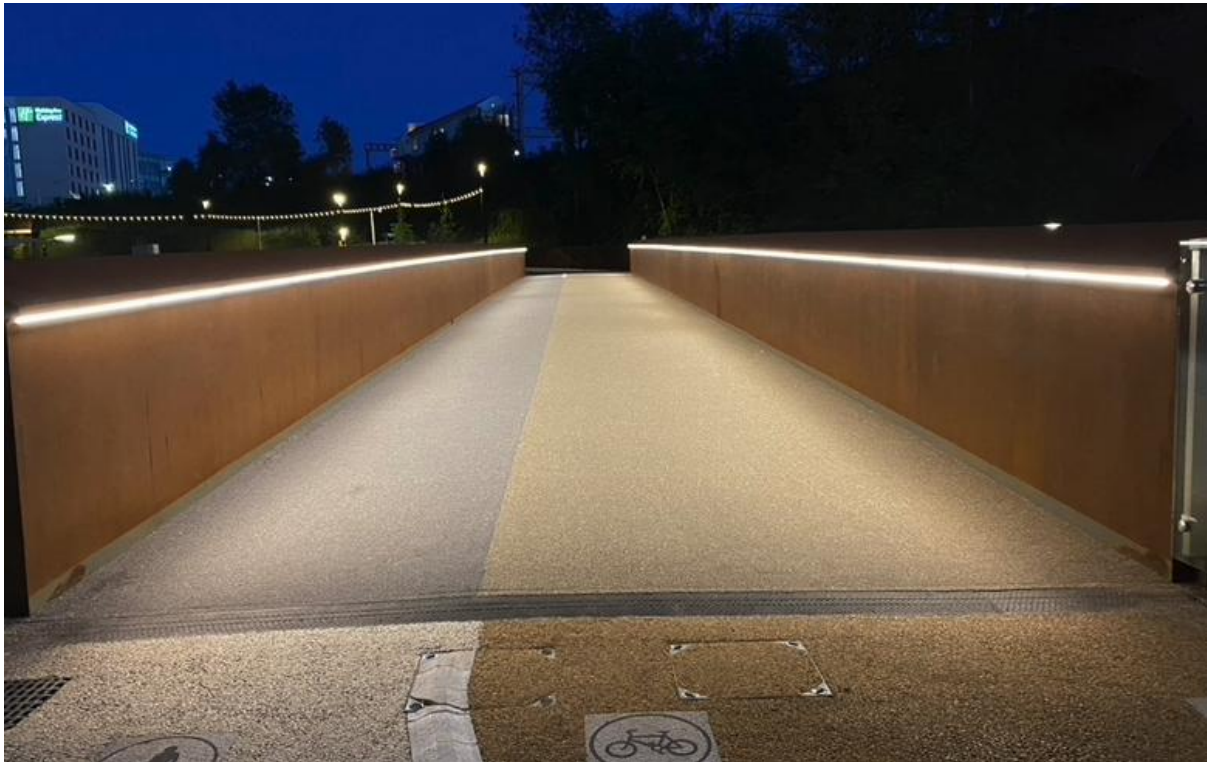


Benefits of modular LED luminaires (projectors - spotlights / gangs)

- Eco-friendly and specifically tailored light dispersion and performance
- Fully controllable lighting temperatures and levels
- More flexible application for use in curved rail or bespoke top rail designs
- Extremely robust, tougher and more durable than other options
- Easier and practical to maintain
- Lower failure risk
- Lower impact on the lighting scheme - if one projector fails the remaining lights remain working
- Lower cost / better value for money, more cost effective

Benefits of LED linear strip lights

- Continuous lighting dispersion up to 120 degrees, ideal for centrally located handrails
- Provides a continuous lighting 'feature'
- Can follow gentle curves
- Uses 'off-the-shelf' slotted handrail
- Can be tailored to fit any handrail gap between post uprights



Conclusion

For high-quality private or commercial LED handrail schemes, using modular and modular arrays (gangs) offers more flexibility and control than linear LED. It is also more robust, easier to maintain and provides better value for money.

ASF illuminated handrail solutions

ASF manufactures high-quality stainless steel handrails, balustrades and pedestrian barrier systems. Most ASF standard products can be fitted with LED modules (spotlights) or LED linear luminaire strip lights. And if a bespoke solution is required, ASF has the manufacturing capability and expertise to deliver.

If you have an illuminated handrail project you'd like to discuss, call 01484 401414 or SEND ENQUIRY via email