

Traversing Wall: CP - TVW

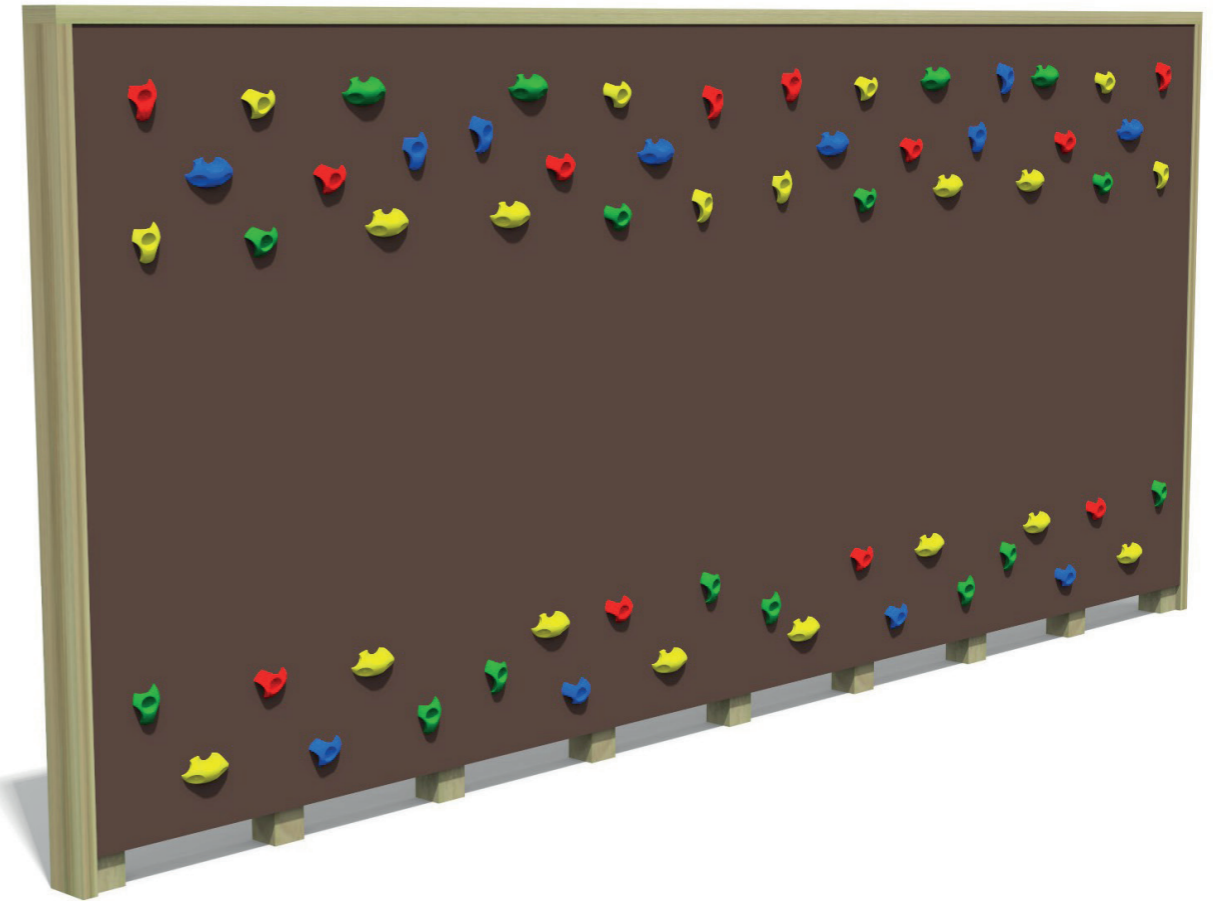
The Traversing Wall offers the physical challenge of moving along the wall without touching the ground and is constructed from a timber frame and tough dark brown slip-resistant birch plywood boards with large wire mesh pattern. It is concreted into the ground with bitumen heat sealed sleeves fitted at ground level in order to keep the cause of ground rot out and the preservative in.

The specially designed coloured rock-climbing holds are suitable for both hands and feet to use and are placed in such a way that it is not possible to gain much height.

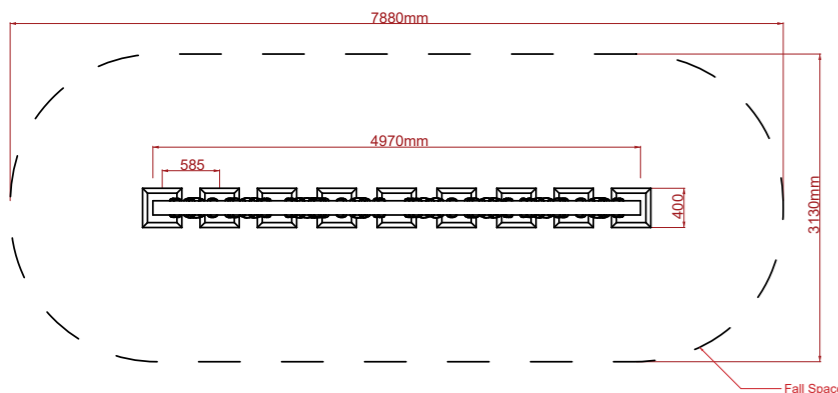
Due to the height of the foot holds safety surfacing is not required however installed on grass we would suggest the use of Grass Safety Mats around the product to prevent ground erosion.

Where installed on tarmac, a 20mm rubber wet pour surfacing can be laid 1.5m around the product. The size can be made to suit in 1.2m multiples.

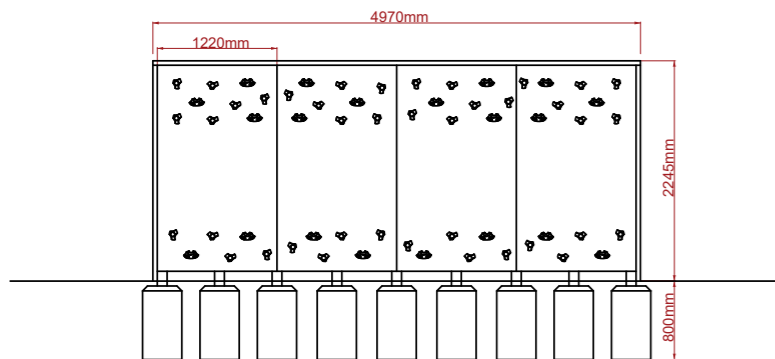
Traversing Wall



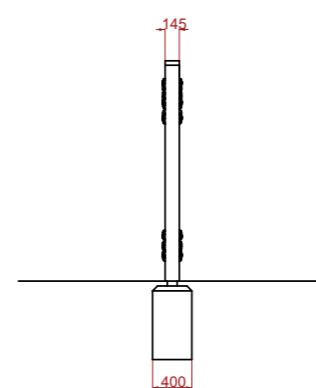
Plan View



Front View



Side View



Specification:

18mm external plywood with a black ware surface supported by a timber frame concreted into the grounds or attached to existing fence line

Timber frame is constructed of 10 x 10cm posts with heat sealed post saver sleeves

Poly resin rock climbing holds in red, green, yellow and blue colour with metal washer inserted

Product Specification:

Dimensions: L: 4.97m W: 0.14m H: 2.30m
Age Range: 5+ years
Play Type: Active
Free Fall Height: 0.60m
Free Space Required: L: 7.88m W: 3.13m

Safety Surfacing Area: 22.8m²
Assembly: Installation Required
Mass of Heaviest Part: kg
Dimensions of Largest Part: L: 2.30m W: 1.20m
Conformity to EN1176: Yes