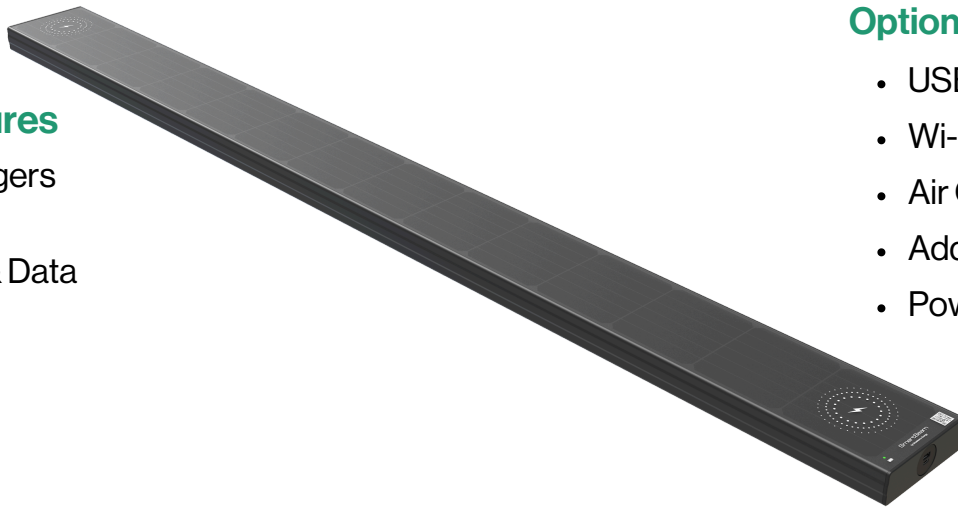


SmartBeam is a groundbreaking solution that effortlessly upgrades regular benches into smart, sustainable, and connected urban seating. It generates 100% clean solar energy, stored in a battery, allowing you to power your portable devices and LED lights day and night—even on cloudy days or in off-grid locations.

## Standard Features

- Wireless chargers
- LED Light
- Connectivity & Data
- GPS
- Solar Panel
- Battery
- Coolers



## Optional Add-ons:

- USB Chargers (A+C)
- Wi-Fi
- Air Quality Sensors
- Additional Battery
- PowerBeam

Each SmartBeam is assigned a unique QR code, which when scanned, reveals the exact amount of CO2 emissions that specific SmartBeam has saved.

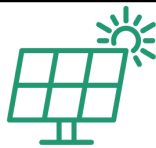


Scan this code for a real-time example!



### Weather Resistant

Designed for all weather including rain, snow and hot weather.



### Fully Solar Powered

Contributes to green initiatives and reduces CO2 emissions.



### Cost-Effective

Create a modern and high-tech solution at a fraction of the cost.



### Eco-friendly design

Adds a smart and eco-friendly addition to any outdoor set up.

## How does SmartBeam work?

SmartBeam incorporates wireless chargers, LED lighting, connectivity & data and a GPS, all powered by a smart solar panel. Solar energy is stored on onboard batteries to provide electronic charging ports and it generates 100% clean solar energy.



## Which products is SmartBeam compatible with?

The SmartBeam can be seamlessly integrated into the seating slats of our Willenhall, Brompton and Belvedere ranges. It is also available separately and can be added to appropriate existing seating, enhancing current benches at a fraction of the cost.