

# PLAY EQUIPMENT

# FUNDING!

YOUR COMPLETE GUIDE TO SECURING FUNDING FOR PLAY SPACES!



BRINGING IMAGINATION INTO PLAY



**SOVEREIGN**  
Bringing Imagination into Play

# INTRODUCTION



## INTRODUCTION

When it comes to developing imaginative play and learning zones for children, there may be times when funds are not readily available. Although you understand the importance of providing outdoor play equipment for children and know which equipment you want to provide, there just isn't enough money in the pot. The above is especially true in today's economic environment. So, if your plans for a new project are hindered by a lack of funds, then applying for funding could be the natural next step.

### WHY CHOOSE FUNDING?

Quite simply, funding can bring you the capital you need to help support your project. Nevertheless, securing financial support is not something you should take lightly. It can be a complicated procedure and the process may be time consuming and daunting. You may not know where to begin or which way to turn for help. However, the important thing is to remember that funding organisations are there to help. They receive thousands of applications every year, and in return, successful requests are granted for play spaces all over the UK.

### WHO IS ELIGIBLE FOR FUNDING?

The good news is that whether you represent an educational body, local authority or not-for-profit organisation, you could be eligible for funding. However, there can be restrictions. Each funding organisation is different, and their preferences as to who can apply may vary. Grants may only be available for schools, or local councils, or there could be an open opportunity for everyone, so it is important to make sure you contact the relevant body and do the research necessary prior to submitting your application.

### WHY IS FUNDING IMPORTANT?

Funding for play spaces is so important because it gives children access to outdoor facilities, opening the door to all facets of development. Outdoor learning - an increasing area of focus within schools and of equal value to indoor learning - is an important asset in every child's development. From simply creating a classroom outdoors or establishing a peaceful storytelling area, to staging outdoor performances or using the outdoor environment to teach children about the outside world - opportunities for learning are endless. Whatever the requirement, investment into play spaces and outdoor classrooms opens a multiplicity of opportunities for growth and can even be integrated into teaching plans.



# PLAY EQUIPMENT

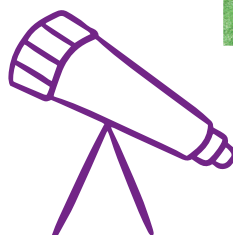
## BENEFITS

FUNDING MAKES IT POSSIBLE FOR THE  
INSTALLATION OF PLAY EQUIPMENT THAT  
GRASPS MANY BENEFITS OF OUTDOOR  
LEARNING BY:

- Encouraging healthy and active lifestyles through giving children the opportunity to engage in physical activity, movement and exercise
- Increasing young people's well-being as well as developing their creativity and resourcefulness
- Helping children develop key abilities such as hand-eye co-ordination
- Encouraging children to interact with one another, make new friends and develop social skills allowing children to experience new challenges, assess risks and manage difficult situations in a safe and supervised environment
- Encouraging psychological growth such as confidence
- Supporting the development of life skills such as problem solving, rule making, trial and error, and exploring new ways of doing things
- Promoting knowledge and a greater involvement in National Curriculum subjects such as Maths and English
- Providing opportunities for imaginative role play, inventiveness and adventure
- Giving children the opportunity to investigate, explore and discover the natural world



  
SOVEREIGN



# SUPPORT WHEN YOU NEED IT



## SOVEREIGN IS TAKING STEPS TO SUPPORT SCHOOLS DURING DIFFICULT TIMES.

Our trained Area Managers are helping customers take the next steps forward by supporting schools when access to financial support is hard. Our management team is experienced in working with schools to put together funding bids and has helped hundreds of customers in their quest to secure funding.



### SUCCESS IN WINNING FUNDING

We have achieved outstanding success in winning funding for customers. We have also worked with hundreds of PTAs to produce detailed designs and budgets for external funding bids. Our experience in this area, along with our innovative design solutions, has also helped to secure the involvement of the wider community in supporting bids.



### HOW WE HELP

Our free, no obligation consultations allow us to talk to you face-to-face and discuss any issues and concerns you have about funding. Our trained Area Managers can talk to you about your play equipment needs, your funding application capabilities and the options available to you. If required, we can assist you in putting together proposals and can even give you the required costings.



### SUPPORT FOR PTAS

We have worked with hundreds of PTAs to produce detailed designs and costings to form external funding bids. These are ideal for use at summer fairs and fundraising events to help encourage other parents to raise even more money after they can see exactly what can be achieved for their children. Once a successful project has been completed, we can help with launch parties and the writing and issuing of local press releases, to bring that extra bit of attention to the hard work PTAs do for schools.

"Now the road to funding has become more difficult, there is a greater need for support. Our team is working hard to support schools in their quest to secure funding and make their outdoor dreams a reality."

Darran Hine, Sales Director



### TO BOOK A CONSULTATION

We have worked with hundreds of PTAs to produce detailed designs and costings to form external funding bids. If you would like to speak to our experienced management team about your funding requirements, or any other outdoor equipment query, contact us today.

# 01702 29 11 29

EMAIL [info@sovereignplayequipment.com](mailto:info@sovereignplayequipment.com)

VISIT [sovereignplayequipment.co.uk](http://sovereignplayequipment.co.uk)



Call Us Today: **01702 29 11 29**

Play Equipment Funding Guide 2023

## SPOTLIGHT

### SHACKLEWELL PRIMARY SCHOOL

Hackney, East London

#### BACKGROUND

Shacklewell Primary School in Hackney is a school of the 21st century. Having recently started the ball rolling in developing and expanding its outdoor offerings to pupils, Sovereign had already met with the school and had installed an adventure trail and fencing. Its new equipment was a success with the pupils; however, with the desire to continue the expansion of its outdoor environment to further promote outdoor learning, the school decided it was time to apply for support for this to become a reality.

#### FIRST STEP

Area Manager, Leigh, who had overseen the school's previous installations, began the process by visiting the school to meet the Business Manager and Nursery Staff. The school's ideas, concerns, thoughts and requirements for further play facilities were discussed – which led to the topic of funding. The school explained that it was applying for Early Years Capital Funding, a grant with the purpose of improving the quality of the delivery of the Early Years Foundation across all sectors. In order to make the school's funding application meet the criteria necessary to be successful, the school was required to supply three quotes.

#### THE PROCESS

Sovereign worked with the school to draw up plans and associated costs for the desired equipment that would be submitted with Shacklewell Primary School's funding application. Equipment included a Play Lodge, Play Hut, Sensory equipment and a Thumper Tower. The Play Lodge and Play Hut are both ideal for children to interact with one another, improve social skills and explore the possibilities of their imagination. They also provide children with shelter from unexpected weather conditions that occur over the course of the year. A Tower unit is perfect for encouraging balance, eye-foot co-ordination and stretching exercises. Finally, sensory equipment provides children with the opportunity to experiment with touch, sounds and other senses, ideal for the early years. A second appointment was booked for a meeting to review the plans which were well received and, with a few small alterations, became the finished article.

#### OUTCOME:

The School was successful with its bid and was granted £25,000 to go towards its chosen equipment.



Bringing Imagination into Play 

## SPOTLIGHT

### ST PAUL'S PRE-SCHOOL

Scunthorpe

#### BACKGROUND

Connected to the local Parish Church of St Paul's, this pre-school is a registered charity and is managed by a voluntary committee. Similar to many other charity-run organisations, resources at the school were very sparse and finances were stretched. With the desire to develop its outdoor environment, the nursery contacted Sovereign for its help in order to apply for a much-needed grant to improve its offerings to children. The Pre-School's outdoor play provisions consists of a small enclosed paved 'back yard' with high surrounding walls of nearby buildings that create a dark and uninviting outdoor space. The existing play equipment was aged and plastic. There was no shade or shelter available to the children and nowhere for children to engage in different sensory experiences or activities.

#### FIRST STEP

Sovereign was asked to produce a plan, in conjunction with the play leader, which would allow the pre-school to apply for a grant from a national funding initiative that was to be run and allocated through the local North Lincolnshire authority.

#### THE PROCESS

After meeting with the authority, Sovereign was able to revise its original ideas to ensure the school's application was compatible with the authority's aims and requirements, which were to allow the children to use their imagination and creative spirit more than ever, and use more 'open ended' products that can be adapted in different ways towards various themes. The use of bright plastics was to be avoided and natural materials used wherever possible. In order to better fulfil the authority's requirements, plans were drawn up to include product features, including: the implementation of a bark area where new smells and textures could be experienced, and a stage with canopy and planters so that the children could dig and grow their own choice of plants. A sand pit would further develop the sensory aspect and also provide for improving interactive play and social skills. The hard and uneven slabs were to be covered with a soft play surface coloured in a neutral brown and beige combination. Finally, a play hut was chosen to encourage more role play.

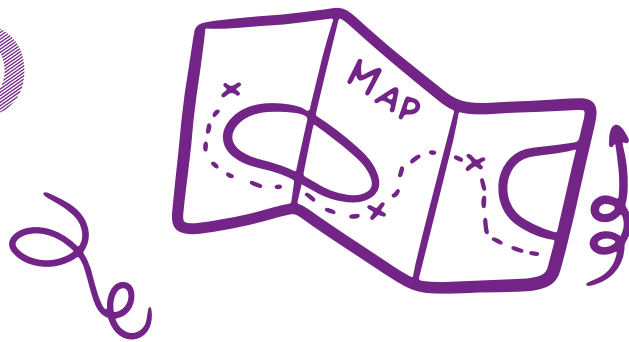
#### OUTCOME:

These plans were subsequently approved, and a grant of just under £9,000 was awarded to the school to allow the pre-school to go ahead with these much needed improvements.

Online: [sovereignplayequipment.co.uk](https://sovereignplayequipment.co.uk)

5

# THE ROAD TO FUNDING



## WHAT DO YOU DO?

You're at the starting post, so where next? Understanding what the funding organisation's requirements are and drawing up an effective project plan is very important for a successful application. So doing sufficient research and planning is essential. Sovereign's simplified steps to securing your funding:



### RESEARCH

### PLANNING



### RESEARCH

Understand the sources of funding. This includes the funding organisation's aims, objectives and most importantly, its eligibility criteria. Doing this research is vital and will maximise your chances of understanding what the funder is looking for, as well as eliminating the risk of missing something vital when writing your funding application. Think of other questions you may need to answer. Do you need to include relevant appendices? If you need to fill out a form, have you completed every applicable field? Is there a deadline? Treat our accompanying funding directory as a 'starter for ten' and use the links to find out more.



### PLANNING

To avoid the shredder, make your project plan stand out. Do this by making sure it covers all of the requirements of the funding organisation. In addition, ensure your project plan is well supported. Make statements that hold up. You want them to help fund your play equipment, but why? What factors support this? Include detail about your organisation, the project, an estimated timeline and a budget. Also, include facts and figures that could work in your favour in securing your application. If you require help drafting your plan or costings together, your local Area Manager will be happy to help.



Call Us Today: **01702 29 11 29**

Play Equipment Funding Guide 2023

# YOUR FUNDING APPLICATION



A funding application may need to be submitted as a form. However, if this is not necessary, then try to aim for your application to fit on no more than two sides of A4.

## WAYS TO AVOID THE DREADED SHREDDER

### 1 THE ISSUE, PROBLEM OR CHALLENGE

Identify the issue, problem or challenge that you are looking to overcome. Explain how this issue will be tackled and what the funds will be used for.

### 2 THE ORGANISATION

Give a summary of your organisation, including aims, objectives, a track record and past success. Explain how you operate, including the activities you carry out.

### 3 THE PROJECT

Describe the project itself and what it will deliver as clearly and concisely as possible. What is unique about this project? What will happen and when?

### 4 BENEFITS AND OUTCOMES

Relate these to the funder's interests. How many children will directly benefit and in what way? Bring out as many tangible impacts as possible – your Sovereign contact can assist you in identifying these benefits whether physical, sensory or cognitive.

### 5 MONITORING AND EVALUATION

What systems are in place to monitor the project? How can you gauge if it will be a success? Monitoring is about measuring – use specific benchmarks. Evaluation is primarily about judgement – did the project have the desired effect?

### 6 IMPLEMENTATION

Set out your timescales and what is involved, e.g., the Sovereign team will install £9000 equipment, in 2 months, over a period of 5 days.

### 7 FUNDING REQUIREMENT

Be clear about why you need the money and what it is intended for. Is it for a specific piece of play equipment or service? How long do you want the grant for? Many funders like to see specific unit cost benefits, e.g., a grant of £x will pay for y people to do z.

### 8 BUDGET

Make this as clear as possible. Is everything included? Remember, you can't go back and ask for more. Sovereign can assist you by supplying you with a detailed breakdown of costs for your desired installations.

### 9 SUMMARY

Finish off by summarising how a grant or donation will make a real difference for children and/or the community.



# WHERE TO GET YOUR FUNDING



THERE ARE VARIOUS WAYS TO APPLY FOR FUNDING OR SEEK FURTHER ADVICE. SOURCES OF FUNDING IN THE UK INCLUDE:



## UK, STATUTORY OR GOVERNMENT FUNDING

Statutory funding is public money distributed by the Government through a variety of channels, usually in the form of grants. Government departments and agencies will fund some of the work of charities and other voluntary organisations. Funding providers usually have very strict criteria and eligibility varies enormously. Your local authority could be an important source for funding, so speaking to them could be a good place to start. Other governmental departments such as the Department for Education also have funding opportunities, although these are becoming extremely limited because of the increasing pressure being placed on restricting public sector spending.

## LOTTERY FUNDING

Since its launch in November 1994, the National Lottery has become a national institution. It is an important development for voluntary organisations, providing a major source for funding. It also helps to contribute to the income charities receive supplementing the more traditional forms of fundraising. 28% of money spent on lottery tickets and scratch cards is transferred by Camelot, the lottery operator, to the National Lottery Distribution Fund. The fund is then split among six distribution bodies which have the responsibility for allocating the funds to 'good causes' i.e., sport, the arts, heritage, community groups / charities, health, education and the environment.

## CHARITABLE TRUSTS

Charitable Trusts come in many shapes and forms - some operate at a very local level, yet others are regional, national and even international. Most cater for one-off specific projects and tend to steer clear of contributing to ongoing running costs. With approximately 9,000 Charitable Trusts in the UK giving out over £1 billion per year, it is no wonder that competition for grants is extremely tough. It is said that on average, less than 10% of applications are successful. Detailed research into the Trust's policies, priorities and procedures is therefore strongly recommended.

DID YOU  
KNOW?



Funding entitlement differs between Local Authorities. If you require further information, please visit [www.direct.gov.uk](http://www.direct.gov.uk)



# WHY NOT START THE BALL ROLLING?



## HERE ARE TEN GREAT FUNDRAISING IDEAS FOR STARTERS:

### SUMMER FÊTES AND FAYRES

A summer fête or fayre can be enjoyed by all and with the right preparation, results can be outstanding. You could even pair up with a local school. Ideas could include book, cake and craft stalls, face painting, hair braiding and other activities such as hook-a-duck and raffles. If you have a budget, why not hire a bouncy castle and entertainers such as magicians or balloon modellers.

### SPONSORED EVENTS

Set up sponsorship events such as a sponsored silence, walk, sleepover or swimming.

### BAG2SCHOOL

Organise a school textile collection with Bag2School. Get teachers and pupils to bring in old clothes, shoes, curtains and any other textiles for donation. These will be weighed by the Bag2School bonus scheme, and a reward will be given per kilo. For more information, go to [www.bag2school.com](http://www.bag2school.com)

### AUCTION NIGHTS AND RAFFLES

Organise a school auction night by asking parents to donate prizes or services. From washing a car or mowing the lawn to a free haircut or a meal for two, anyone can take part, even teachers.

### ART EXHIBITION AND SALE

Turn your library or school hall into a gallery and show off your pupils' artistic flair. Why not let the budding musicians take part to set the mood?

### SCHOOL PERFORMANCES

Bring your school hall to life with school plays, music performances and dance routines for a small entrance fee. A school performance could even be complemented with a drink or snack stall for intervals.

### SCHOOL PARTIES AND DISCOS

Set the scene for after school parties in your school main hall. Parties are not just an ideal way to fundraise, but an excellent way to get pupils to get to know each other. They can even be tailored for parents.

### SECOND-HAND SCHOOL UNIFORM SALE

Run a second-hand school uniform sale by asking parents to donate uniform that has been outgrown by their children. These sales could also be incorporated with school book fairs and cake stalls.

### SCHOOL SPORTS DAYS

Allow parents to join in the fun at school sports days. You could even create your own school Olympics, incorporating all playground and field sports, from football and rounders to running and long jumps.

### NON-UNIFORM DAYS

Other than being a great way to engage with pupils, mufti days can be a great way to fundraise. Create fancy dress themes to fit in with special occasions or National Curriculum subjects. Don't forget to get teachers and dinner ladies involved too. Competitions can also be incorporated.



Bringing Imagination into Play



Online: [sovereignplayequipment.co.uk](http://sovereignplayequipment.co.uk)



# FUNDING

## DIRECTORY



YOUR COMPREHENSIVE A-Z GUIDE OF UK FUNDING BODIES ALONG WITH WEB LINKS.

### GOVERNMENT FUNDING

#### ENGLAND - CENTRAL GOVERNMENT

Gov.uk provides opportunities to apply for community-based funding and grants for projects like activities for young people and development of communal facilities.

[www.gov.uk/apply-funding-community-project](http://www.gov.uk/apply-funding-community-project)

#### SCOTLAND

The Scottish Council for Voluntary Organisations (SCVO) publishes advice on fundraising on its website, which includes details on statutory funding.

[www.scvo.org.uk/funding](http://www.scvo.org.uk/funding)

The Scottish Government website lists the voluntary sector funds it is making available.

[www.scotland.gov.uk/Topics/People/15300/funding](http://www.scotland.gov.uk/Topics/People/15300/funding)



#### WALES

The Welsh Assembly has a number of grant schemes for the voluntary sector. The Welsh Assembly website is [www.wales.gov.uk](http://www.wales.gov.uk) Wales Council for Voluntary Action produces a range of information sheets on funding in Wales. These include funding from the National Assembly, WCVA's schemes and grant-making trusts.

[www.wcva.org.uk](http://www.wcva.org.uk)

#### NORTHERN IRELAND

The Department for Social Development's Voluntary and Community Unit is the main department dealing with the voluntary sector. [www.communities-ni.gov.uk](http://www.communities-ni.gov.uk) Northern Ireland's leading funding toolkit, GrantTracker helps the voluntary and community sectors find funding schemes relevant to their projects and co-ordinate funding applications. GrantTracker was developed by NICVA 15 years ago and is available online for a subscription fee.

[www.grant-tracker.org](http://www.grant-tracker.org)



### AWARDS FOR ALL

This Lottery grant scheme is aimed at funding community-based projects across the UK. Schemes vary for England, Northern Ireland, Scotland and Wales and they are funded by independent organisations. The programme funds not for profit groups, parish and town councils, schools health bodies. Grants of between £500 and £5,000 are awarded for projects that promote education, the environment and the health of the local community.

[www.awardsforall.org.uk](http://www.awardsforall.org.uk)

### THE NATIONAL LOTTERY COMMUNITY FUND

The National Lottery Community Fund distributes over £600million a year to communities across the UK. Funding and Grants go to voluntary and community organisations, that improve health, education and the environment. A full list of funding and grants available can be found at the link provided below.

[www.tnlcommunityfund.org.uk](http://www.tnlcommunityfund.org.uk)

### HERITAGE LOTTERY FUND

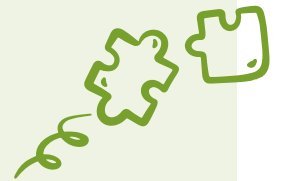
The Heritage Lottery Fund provides a range of different grant programmes with funding from £3,000 to over £5million. In assessing applications, they take account of the outcomes for heritage, people and communities that projects will achieve.

[www.hlf.org.uk](http://www.hlf.org.uk)

### NATIONAL LOTTERY GOOD CAUSES

Gateway to information on how to apply for a National Lottery grant in the UK, and the purposes to which existing grants are being put. Search and find compatible programmes online. National Lottery money is given out by 12 independent organisations, each with specialist knowledge of their sectors.

[www.lotterygoodcauses.org.uk](http://www.lotterygoodcauses.org.uk)



### ANNE FRANK TRUST

The Anne Frank Trust works with young people to help build a society based on acceptance, mutual respect, compassion and responsibility.

[www.annefrank.org.uk](http://www.annefrank.org.uk)

### ASDA FOUNDATION

Charities, schools and community groups have the opportunity to apply for funding for local projects that require financial assistance to the ASDA Foundation. Grants of between £5,000 and £10,000 available for good causes and community groups in local areas.

[www.asdafoundation.org](http://www.asdafoundation.org)

### BBC CHILDREN IN NEED

Children in Need offers a small grants scheme for registered charities and not-for-profit organisations. Small grants of up to £10,000 are available for organisations working with disadvantaged children and young people aged 18 years old and under.

[www.bbc.co.uk/programmes/b008dk4b](http://www.bbc.co.uk/programmes/b008dk4b)

### BIFFA AWARD - ROYAL SOCIETY OF WILDLIFE TRUSTS

Biffa Award was established in 1997 under the Landfill Communities Fund and supports a wide range of community and environmental projects across the UK. Biffa Award currently funding for projects between £10,000 - £75,000 under four different themes, one of which is recreation. The Small Grants Scheme (SGS) offers grants between £250 and £10,000; the Main Grant Scheme (MGS) offers grants between £10,000 and £50,000. This funding has enabled the creation and upgrading of numerous new children's play areas.

[www.biffa-award.org](http://www.biffa-award.org)

### COMIC RELIEF

Comic Relief's vision across England, Scotland, Northern Ireland and Wales is that people should be able to live free from poverty, where their rights and safety are protected, their needs provided for and where they can play a part in the communities in which they live. Its grant strategy allows the voluntary and community sector to apply for grants.

[www.comicrelief.com](http://www.comicrelief.com)





### COMMUNITY FUNDS AND FOUNDATIONS

The Amey Community Fund, managed by the Cambridgeshire Community Foundation, offers grants to organisations and groups within 10 miles of a landfill sit in Cambridgeshire County Council's boundaries.

[www.cambscf.org.uk](http://www.cambscf.org.uk)

### COMMUNITY FOUNDATION NETWORK

The Community Foundation Network represents the movement of charities dedicated to strengthening local communities, creating opportunities and tackling issues of disadvantage and exclusion throughout the UK. Community Foundations have been active in the UK since the 1980s and a rapidly growing network of approximately 55 foundations is now established. You can search for your local community foundation on the website.

[www.ukcommunityfoundations.org/ournetwork](http://www.ukcommunityfoundations.org/ournetwork)

### CORRA FOUNDATION

Corra Foundation is a grant-maker that distributes funding across Scotland. Many of their funding opportunities have a targeted theme or purpose. The Foundation does have programmes that make smaller grants to community groups. Their Boost small grants programme currently provides grants of £500-£3,000 to grassroots organisations and charities with a yearly income of up to £50,000 whose work benefits children and families. It has been created to help groups that find the increase in basic running costs are making their work much more challenging.

[www.corra.scot](http://www.corra.scot)

### ENTRUST - THE LANDFILL COMMUNITY FUND

Entrust is the regulator that oversees the activity of all Environmental Bodies (EBs) across the UK and gives final approval of grants. Landfill operators donate to the Landfill Community Fund which was created to assist local community and environmental projects. The grants available are open to those seeking to improve community playgrounds or to develop sites within a certain proximity to a landfill site.

[www.entrust.org.uk](http://www.entrust.org.uk)

### ERNEST COOK TRUST

The Ernest Cook Trust is an educational charity and one of the UK's foremost providers and funders of Outdoor Learning. Our funding focus is for grants for environmental engagement, nature connection, Outdoor Learning and learning from the land. The Trust's criteria prioritise support for children, young people their families, especially those from underserved communities and residing in areas of high deprivation.

[www.ernestcooktrust.org.uk](http://www.ernestcooktrust.org.uk)

### ESMÉE FAIRBAIRN FOUNDATION

One of the largest independent grant making foundations in the UK, the Esmée Fairbairn Foundation aims to improve the quality of life throughout the UK. It achieves this by funding the charitable activities of organisations that have the ideas and ability to achieve change for the better.

[www.esmeefairbairn.org.uk](http://www.esmeefairbairn.org.uk)

### FOOTBALL FOUNDATION

The Football Foundation is the largest sports charity in the UK funded by the Premier League, The FA and Government (via Sport England). It funds the development of new and refurbished grassroots sports facilities improving the quality and experience of playing sport at the grassroots level to sustain and increase participation and improve general skills levels.

[www.footballfoundation.org.uk/looking-for-funding](http://www.footballfoundation.org.uk/looking-for-funding)

### GARFIELD WESTON FOUNDATION

Garfield Weston Foundation is a grant-giving charity for UK registered charities. The Foundation will also consider applications from a limited number of exempt organisations - churches, educational establishments, hospitals and housing corporations.

[www.garfieldweston.org](http://www.garfieldweston.org)

### GREGGS FOUNDATION

The Greggs Foundation is a grant making trust, distributing over £1million per year to charitable organisations throughout England, Scotland and Wales. The mission of the Greggs Foundation is to 'make a difference to people in need in the heart of our local communities'.

[www.greggsfoundation.org.uk](http://www.greggsfoundation.org.uk)

### LOCAL AIRPORTS GRANTS

Local Airports grant approx. £100,000 annually to causes establishments within their flight paths and surrounding areas - so check with your local Airport for funding opportunities.

### LONDON MARATHON FOUNDATION

Provides funding for projects that inspire physical activity for children, young people and marginalised communities in London - including community play projects. Applications open in early 2024, but please note, projects must be open for all the community to use so school and private access playgrounds are unlikely to be funded.

[www.londonmarathonfoundation.org](http://www.londonmarathonfoundation.org)

## LONDON PLAY

The London Play website lists major funding sources and website links for the London area.  
[www.londonplay.org.uk](http://www.londonplay.org.uk)

### LLOYDS BANK FOUNDATION

We only fund small, registered charities who provide direct frontline services to people experiencing a range of issues. Our funding criteria are very specific, and we have a few different programmes. Please visit the website below for details of our current funding programmes.

[www.lloydsbankfoundation.org.uk/funding](http://www.lloydsbankfoundation.org.uk/funding)

## METROPOLITAN PUBLIC GARDENS ASSOCIATION (MPGA)

The MPGA gives modest grants and practical assistance to community groups across London. They welcome hearing from amenity groups in London looking for modest funding or help with a site or garden which has been neglected or where improvements are proposed.

[www.mpga.org.uk](http://www.mpga.org.uk)

## PEOPLE'S POSTCODE TRUST

Players of People's Postcode Lottery have funded good causes in every postcode area in Britain. There are different funding opportunities available for smaller, local charities and good causes through the community programme trusts. There are six community programme Trusts, each representing a different geographical area of Great Britain

Find out which trust to apply to and to find further information on our funding criteria at <https://www.postcode lottery.info/charities/local-funding-opportunities/>

## SUEZ COMMUNITIES TRUST

SUEZ Trust is an ethical funding organisation dedicated to making lasting improvements to the natural environment and community life. It supports community and environmental improvement projects through the Landfill Communities Fund.

[www.grantscape.org.uk/fund/suez-communities-fund](http://www.grantscape.org.uk/fund/suez-communities-fund)

## SPORT ENGLAND

With national and community funding programmes, Sport England invests funding in organisations and projects that will grow and sustain participation in grassroots sport and create opportunities for people to excel at their chosen sport. It has many funding programmes, from small grants and those that fund the renovation and modernisation of local sports facilities, to funds that boost physical activity in primary play spaces and improve playing fields.

[www.sportengland.org](http://www.sportengland.org)

## TESCO STRONGER STARTS

Schools and children's groups will be able to apply via Groundwork for a grant of up to £1,500. Grants are for activities that focus on providing food to kids such as fruit for breakfast clubs or snacks to enjoy throughout the day, and for equipment for outdoor and indoor activities. Successful applications will go to a customer vote in their local Tesco store. Two out of the three blue token voting boxes by the checkout will be dedicated to local schools with the third given over to local community projects nominated by each store's colleagues. Customers can then choose which of the three projects they'd like to support by voting with a blue token. Every three months the grant scheme will support 1350 schools with £1.35m worth of funding in 675 communities across the UK.

[tescoplc.com/strongerstarts](http://tescoplc.com/strongerstarts)

## THE DIRECTORY OF SOCIAL CHANGE

An independent charity with a vision of an independent voluntary sector at the heart of social change. By providing essential information and training to the voluntary sector they aim to enable charities to achieve their mission.

[www.dsc.org.uk/category/fundraising](http://www.dsc.org.uk/category/fundraising)

## THE FOYLE FOUNDATION

The Foyle Foundation is an independent grant making trust that distributes grants to small UK charities. The Foundation does not support applications from individuals or mainstream schools.

[www.foylefoundation.org.uk](http://www.foylefoundation.org.uk)

## THE JOHNSON FOUNDATION

The Johnson Foundation was established to promote charitable concerns for the Liverpool City Region and whilst we do work with organisations based outside of the area, the project must be of benefit to groups within the Liverpool City Region (LCR). To apply for a grant, an organisation must complete our application form. Completed application forms are then submitted to our board of Trustees for consideration. It can also be downloaded from our website or by emailing: [hello@johnsonfoundation.co.uk](mailto:hello@johnsonfoundation.co.uk) Completed application forms need to be returned to our 'hello' email address.

<https://thejohnsonfoundation.co.uk/>

## THE TUDOR TRUST

Supporting positive change in communities, the Tudor Trust offers an independent grant-making scheme that supports voluntary and community groups working in any part of the UK.

[www.tudortrust.org.uk](http://www.tudortrust.org.uk)

## COMMUNITY FUNDS AND FOUNDATIONS

### VALENCIA COMMUNITIES FUND

Provides funding for a large range of projects, including the provision of maintenance of public amenities and development of play areas. Projects need to be located within 10 miles of one of local steering groups.

[www.valenciacommunitiesfund.org.uk](http://www.valenciacommunitiesfund.org.uk)

### WOODEN SPOON

Aims to improve the quality and prospect of life for children and young people living in the UK and Ireland who are physically, socially or mentally disadvantaged. Grants are available to special needs schools.

[www.woodenspoon.com](http://www.woodenspoon.com)

### FCC COMMUNITIES FOUNDATION

FCC Communities Foundation awards grants to community projects from funds donated by FCC Environment through the Landfill Communities Fund and Scottish Landfill Communities Fund. Previously known as WREN, FCC Communities Foundation was established in 1997 and has provided over £250mm to more than 7500 projects across the UK.

[fcccommunitiesfoundation.org.uk](http://fcccommunitiesfoundation.org.uk)



## FURTHER SOURCES

### PLAY ENGLAND

Their purpose is to ensure that children and young people in England have the space and opportunity to play freely as part of their daily lives, at school, at home and in public spaces. Play England's aim is for all children and young people in England to have regular access and opportunity for free, inclusive, local play provision and play space. Their objectives are to:

- Promote local play strategies
- Build partnerships for play
- Research and demonstrate the benefits of play
- Promote equality and diversity in play provision
- Raise awareness and promote standards

[www.playengland.org.uk](http://www.playengland.org.uk)

### PLAY SCOTLAND

Play Scotland works to promote the importance for all children and young people, and campaigns to create increased play opportunities in the community.

[www.playscotland.org](http://www.playscotland.org)

### PLAY WALES

Play Wales provide advice and guidance to support all those who have an interest in, or responsibility for providing for children's play so that one day Wales will be a place that recognises and provides well for every child's play needs.

[www.playwales.org.uk](http://www.playwales.org.uk)

### PLAYBOARD (NORTHERN IRELAND)

PlayBoard is the leading agency for the development and promotion of children and young people's play in Northern Ireland. The organisation provides a range of innovative services designed to strengthen service delivery through advice, support, training and tailored provision.

[www.playboard.org](http://www.playboard.org)

### REFERENCES

\*National Children's Bureau, 2008 "Fact sheet: How to raise funds for children's play" available at: [www.ncb.org.uk/cpis/resources/factsheets.aspx](http://www.ncb.org.uk/cpis/resources/factsheets.aspx)

[www.institute-of-fundraising.org.uk](http://www.institute-of-fundraising.org.uk)



## IN YOUR LOCAL AREA

Local funds may be available for schools situated near landfill sites, wind-farm areas, nuclear power stations, solar parks or airport flight paths. While these are not specific grants, they can provide possibilities for your project and are worth looking into.



## CROWDFUNDING

### SPACEHIVE

Spacehive is a crowdfunding platform that aims to make it as easy as possible for local people, companies and councils to fund and bring their civic environment to life - whether you want to transform a playground or spruce up a park, or create something completely new.

[www.spacehive.com/](http://www.spacehive.com/)



## OUR ADDITIONAL SUPPORT

### SPREAD THE COSTS

If current budgets are a constraint, have you considered using our spread payment plan? (We show spread payment prices within our quote packs). Many schools are now choosing this option because it can save you thousands as prices rise. Below are three examples of clients who ordered in May 2021 and what their prices would have been at Christmas 2022.

- A job ordered in May 2021 cost the customer £9,235 on a Spread Payment Plan, if they ordered 18 months later, on a Discounted Prompt Payment, the same job would have cost them £10,862
- A job ordered in May 2021 cost the customer £36,066 on a Spread Payment Plan, if they ordered 18 months later, on a Discounted Prompt Payment, the same job would have cost them £43,951
- A job ordered in May 2021 cost the customer £44,400 on a Spread Payment Plan, if they ordered 18 months later, on a Discounted Prompt Payment, the same job would have cost them £54,951

These three examples were just 18 months into a 3-year plan. Imagine being £4,066 short, delaying ordering, saving that up, and then coming to place an order and the job is then £7,885 more expensive. It's a win-win for schools who want to inflation proof their plans.

### BENEFITS INCLUDE:

- Giving you the opportunity to continue to fund raise, while having the use and benefit of the new equipment
- Buying at today's prices, saving you money in the long term
- Paying over three financial years; one payment after delivery/installation, one payment 12 months later and your last payment 24 months after delivery/installation
- A simple, stress free process with full support

In short, if you need to update, extend or upgrade your current outdoor facilities, whatever it may be, our Spread Payment Plan could well be the solution.





01702 29 11 29

EMAIL [info@sovereignplayequipment.com](mailto:info@sovereignplayequipment.com)  
VISIT [sovereignplayequipment.co.uk](http://sovereignplayequipment.co.uk)



BRINGING IMAGINATION  
INTO PLAY

