

thesolar**range**



intelligent  
**solar** lighting  
and street furniture

thesolarrange  
making programmable solar  
lighting and smart street  
furniture for public, private and  
commercial locations.

We like to think of our range as the world's  
most intelligent solar lighting.

thesolarrange

All products are designed assembled and distributed  
at our dedicated premises in the United Kingdom.

The Solar Range Limited are the exclusive global distributor  
in partnership with Adlis smart and Nvidia.



**ADLIS  
SMART**

**bynet**  
*Data Communications Ltd*



**NVIDIA.**  
INCEPTION  
PROGRAM

some of our customers...



THE  
ROYAL  
PARKS



BRITISH AMERICAN  
TOBACCO



wrexham  
COUNTY BOROUGH COUNCIL



Prifysgol Cymru  
Y Drindod Dewi Sant  
University of Wales  
Trinity Saint David



Severnside  
Community Rail  
Partnership



Swansea University  
Prifysgol Abertawe



LORD  
WANDSWORTH  
COLLEGE  
· HAMPSHIRE ·

BOURNEMOUTH  
CHRISTCHURCH  
POOLE COUNCIL

BCP  
COUNCIL



DERBY college



REUNION ISLAND



LYMPSTONE  
HARBOUR



CITY OF  
ATHENS

# Solar lighting with zero energy cost zero carbon emissions

We can design and create customised designs to suit your specific requirement including working prototypes

thesolarrange products combine cutting edge technology with superior quality and design to deliver outstanding performance and reliability.



# Did you know?

## Internal Applications

We can provide all our Smart Benches and tables for inside.

Using mains power instead of solar. Ideal for use in terminals, stations and shopping centres.

## Branding

All our benches are made to order and can be finished in any colour and we can also include your branding on the benches if required. (for multiple units)

## Reducing Carbon Emissions

Our benches have 105 watt solar panels.

Based on average daily UK sunshine hours of between 3-4 hours the solar panels will generate between 315WH and 420WH of electricity per day.

Therefore, just one smart bench can reduce carbon emissions by between 0.25kg and 0.33kg per day.



**Testimonials**  
don't take our  
word for it...

**Penny Snowden** | PS CONSULTING | *on behalf of: Sonning Common Parish Council*

*"I just wanted to say how many positive comments we have already received for the lighting at Memorial Park and to compliment your team on their efficiency and quality of work.*

*We are delighted by the result and I know it took time to get over the final hurdle, it has definitely been worth all the effort! We hope the lighting provides a safe and welcoming Park for many years to come. Thank you for all your patience and tenacity!"*

---

**Alex Bellemare** | Civil Engineer | *City of Saint-Remi, Canada*

*"The addition of solar eyes has made our cycle paths safer and greatly improves the experience of cyclists, encouraging them to adopt an active lifestyle day and night. To date 417 solar eyes have been installed for the benefit of citizens. The project will continue throughout 2022 and 2023."*

---

**Paul Dudley** | President | ID sign systems | USA

*"The solar range has a great design portfolio of well selected products and the company gives great attention to detail on every project. We have worked together for many years and have always appreciated the quality of products and excellence of customer service."*

---

**Matt Rham** | Interim Highway | Improvement Manager | Environment | BCP Council

*"Lighting was required for a new cycle and pedestrian path running through a regeneration site in Hamworthy in Poole to encourage safe, active travel. After carrying out extensive research and reviewing a range of product samples, we chose Solar Range to supply special ground level solar powered lights. The lights not only recharge during the day, but they have been specifically designed to not cause disorientation in bats, which standard overhead lighting can sometimes do."*

---

**Col Wheeler MPhil** | Chairman | *Lympstone Fishery & Harbour Association*

*"The solar eyes are quite spectacular and will offer a much safer pathway across the top of the harbour wall in darkness."*

---

**Heather Cullimore** | Severnside Community Rail Partnership | *Great Western Railway*

*"First class service with a 5 star product at competitive prices. The solar range provided a customised solution to light up our timetables on platforms using their solar powered illuminated poster cases. All delivered and installed on time and on budget."*

---

**Colonel G F Wheeler** | Chief Executive | *Vranch House*

*"The Solar Post Bollards installed at Vranch House illuminate the path between the car park and the Hydrotherapy Pool. Apart from adding a much-noticed touch of high-tech pizzazz these remarkable devices automatically illuminate the space from dusk to dawn with a pool of light that grows larger as you get closer to them. They are easy to install, utterly reliable and require only the most simple maintenance. We recommend them without qualification."*

**therange**

<b>1</b>	1.1	p.12	solar <b>classic bench</b> WITH ARMREST	WYC1809
	1.2	p.15	solar <b>classic bench</b> WITH BACKREST & ARMREST	WYC1809B
<b>2</b>	2.1	p.16	solar <b>sylva bench</b>	WYC1909B
	2.2	p.19	solar <b>sylva bench</b> WITH BACKREST	WYC1909C
<b>3</b>	3.1	p.20	solar <b>sylva picnic table</b>	WYC1909A
	3.2	p.23	solar <b>sylva picnic table</b> WITH BACKREST	WYC1909
<b>4</b>		p.24	solar <b>municipal bench</b>	WYC1908D
<b>5</b>		p.27	solar <b>municipal picnic table</b>	WYC1908B
<b>6</b>	6.1	p.28	solar <b>municipal bench</b> WITH NO SOLAR TECHNOLOGY	WYC1908B
	6.2	p.29	solar <b>sylva bench</b> WITH NO SOLAR TECHNOLOGY	WYC1909G
<b>7</b>		p.30	solar <b>blade bench</b>	WYC1817
<b>8</b>	8.1	p.33	solar <b>post 100</b>	WYL1802
	8.2	p.33	solar <b>post 200</b>	WYL1802A
	8.3	p.33	solar <b>post 300</b>	WYL1802B
<b>9</b>		p.36	solar <b>quad 100/200/300</b>	WYL1801A
<b>10</b>		p.32	solar <b>eye</b>	SEWNS SEWWBH SECWS / SECWBH
<b>11</b>		p.39	solar <b>boom</b>	ELS-04A / ELS-04B / ELS-04C
<b>12</b>		p.40	solar <b>case</b>	SCAW / SCAP / SCA1N / SCA1P / SCA0W / SCA0P
<b>13</b>		p.43	solar <b>shelter</b>	WYS1816
<b>14</b>		p.44	solar <b>canopy</b>	WYC1812
<b>15</b>		p.47	solar <b>wall mars</b>	SWM
<b>16</b>		p.48	solar <b>post mars</b>	SPM
<b>17</b>		p.50	solar <b>downlighter</b>	SWDL
<b>18</b>		p.52	solar <b>hybrid charger</b>	WYL2401

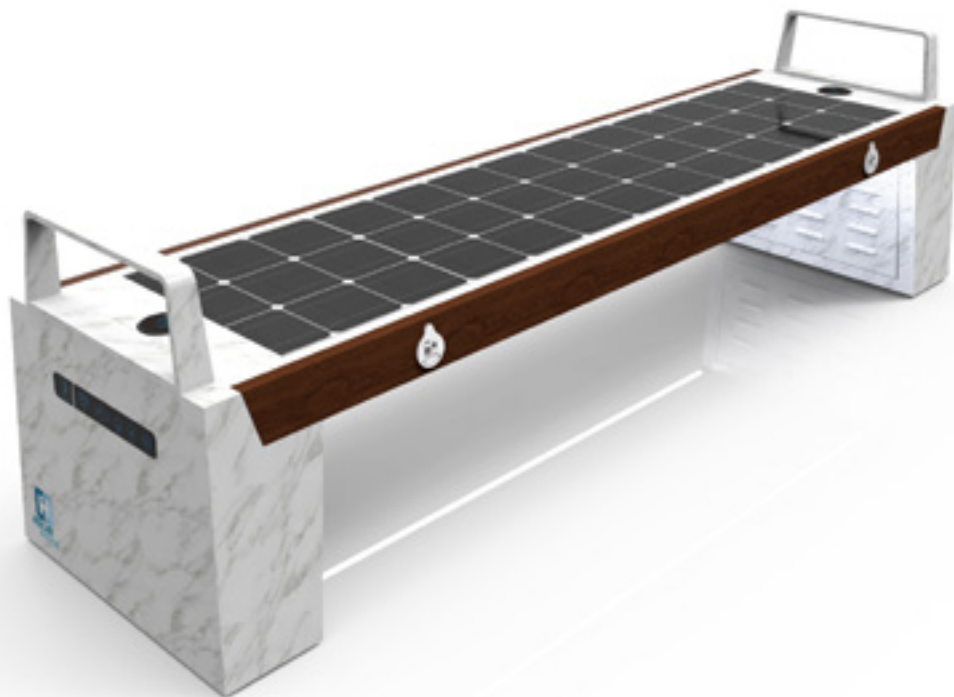
*All prices are in GBP and are exclusive of vat and include delivery*

# solar classic bench

WYC1809 solar bench with armrest

**The classic Solar Smart WIFI Bench offers the very latest cutting edge technology backed up by superb engineering and fabrication.**

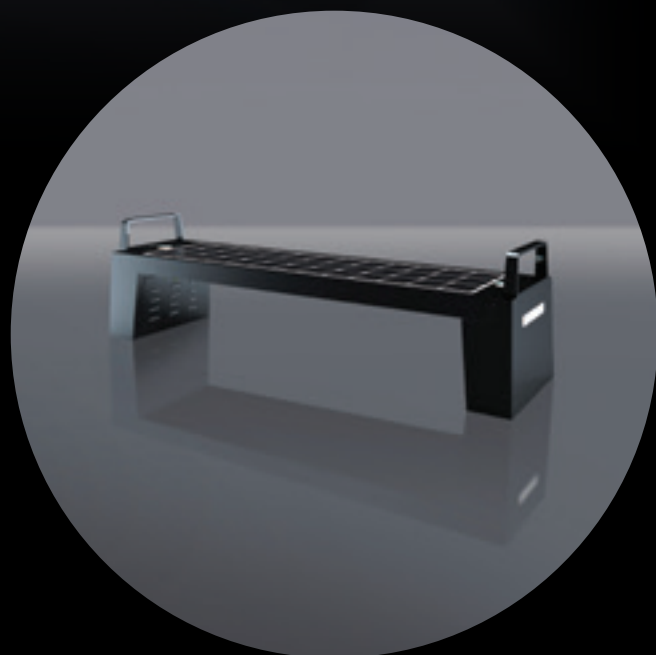
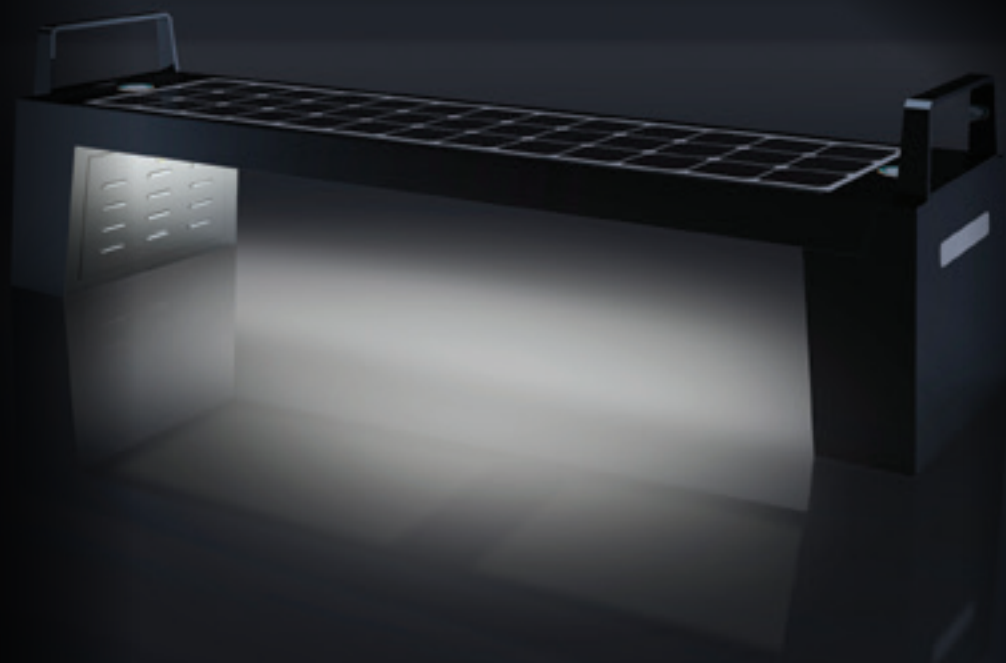
Produced in stainless steel and powder coated to any RAL colour. Standard features include USB and wireless charging, 4G international router, Bluetooth speaker and discreet LED lighting.



## specifications

<b>Material</b>	Stainless steel frame with composite wood panels
<b>Finish</b>	Powder Coated RAL 7012 Basalt Grey
<b>Dimensions</b>	L 195cm w 48cm H 42cm
<b>Solar Panel</b>	105W
<b>Battery</b>	12v 55Ah
<b>Features</b>	<ul style="list-style-type: none"><li>• 2no USB ports</li><li>• 2no wireless charging</li><li>• LED lighting - warm white - sensor</li><li>• Bluetooth speaker 5/12v</li><li>• Wi-fi 4G international router</li><li>• Cooling fans/temperature seat control</li></ul>
<b>Controller</b>	MPPT
<b>Weight</b>	60kg

1.1



1.2



# solar **classic bench**

**WYC1809B** solar bench with armrest and backrest

**The classic Solar Smart WIFI Bench offers the very latest cutting edge technology backed up by superb engineering and fabrication.**

Produced in stainless steel and powder coated to any RAL colour. Standard features include USB and wireless charging, 4G international router, Bluetooth speaker and discreet LED lighting.



## specifications

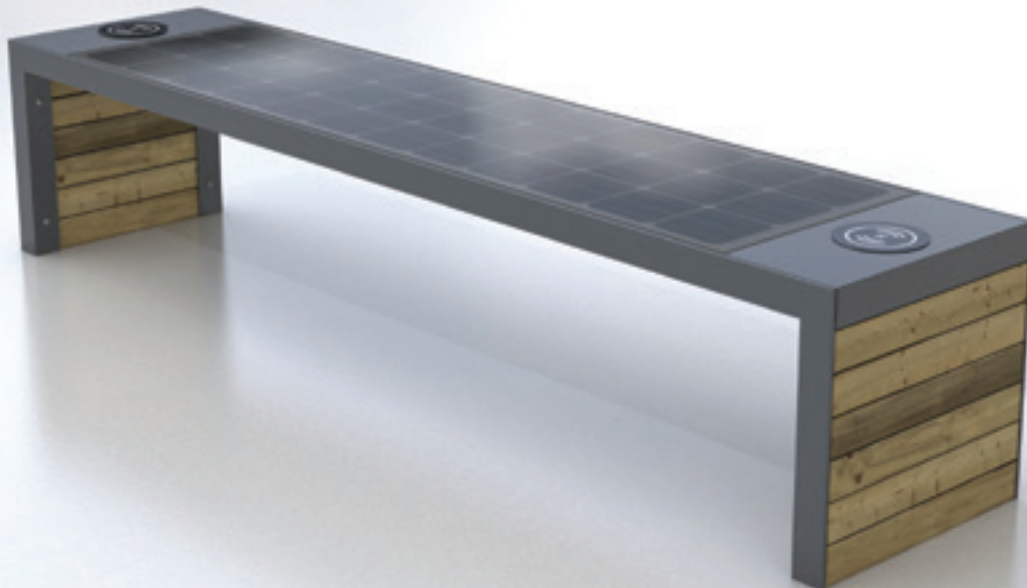
<b>Material</b>	Stainless steel frame with composite wood panels
<b>Finish</b>	Powder Coated RAL 7012 Basalt Grey
<b>Dimensions</b>	L 195cm w 48cm H 42cm
<b>Solar Panel</b>	105W
<b>Battery</b>	12v 55Ah
<b>Features</b>	<ul style="list-style-type: none"><li>• 2no USB ports</li><li>• 2no wireless charging</li><li>• LED lighting - warm white - sensor</li><li>• Bluetooth speaker 5/12v</li><li>• Wi-fi 4G international router</li><li>• Cooling fans/temperature seat control</li></ul>
<b>Controller</b>	MPPT
<b>Weight</b>	70kg

# solar **sylva** bench

WYC1909B solar bench

**The SYLVA Smart Bench offers the very latest cutting edge technology backed up by superb engineering and fabrication.**

Produced in stainless steel and powder coated to any RAL colour with composite wood panel. Standard features include USB and wireless charging, 4G international router, Bluetooth speaker and discreet LED lighting.



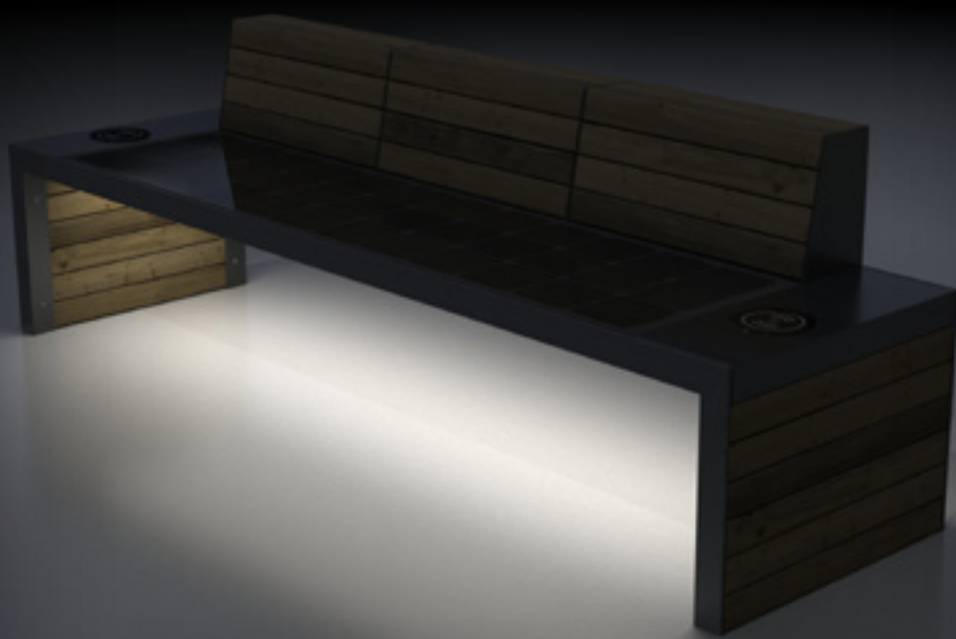
## specifications

<b>Material</b>	Stainless steel frame with composite wood panels
<b>Finish</b>	Powder Coated RAL 7012 Basalt Grey
<b>Dimensions</b>	L 204cm w 43cm H 40cm
<b>Solar Panel</b>	105W
<b>Battery</b>	12v 55Ah
<b>Features</b>	<ul style="list-style-type: none"><li>• 2no USB ports</li><li>• 2no wireless charging</li><li>• LED lighting - warm white - sensor</li><li>• Bluetooth speaker 5/12v</li><li>• Wi-fi 4G international router</li><li>• Cooling fans/temperature seat control</li></ul>
<b>Controller</b>	MPPT
<b>Weight</b>	60kg

# 2.1



## 2.2



# solar **sylva** bench

WYC1909C solar bench with additional back rest

**the SYLVA Smart Bench offers the very latest cutting edge technology backed up by superb engineering and fabrication.**

Produced in stainless steel and powder coated to any RAL colour with composite wood panels. Standard features include USB and wireless charging, 4G international router, Bluetooth speaker and discreet LED lighting.



## specifications

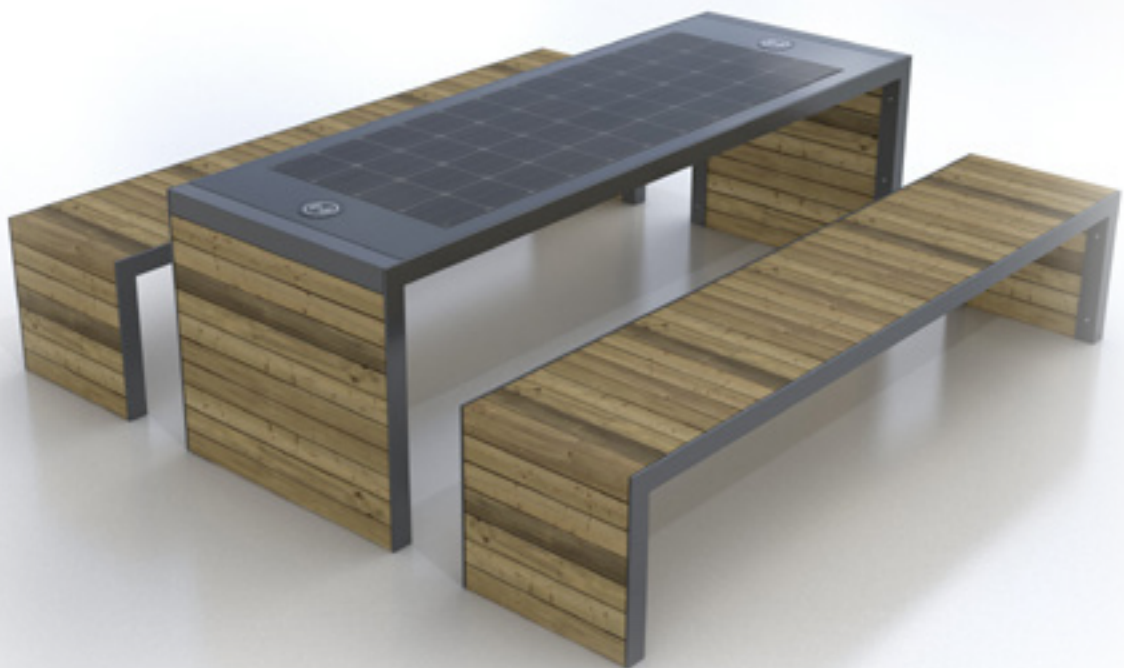
<b>Material</b>	Stainless steel frame with composite wood panels
<b>Finish</b>	Powder Coated RAL 7012 Basalt Grey
<b>Dimensions</b>	L 204cm w 45cm H 40cm (80cm incl. back rest)
<b>Solar Panel</b>	105W
<b>Battery</b>	12v 55Ah
<b>Features</b>	<ul style="list-style-type: none"><li>• 2no USB ports</li><li>• 2no wireless charging</li><li>• LED lighting - warm white - sensor</li><li>• Bluetooth speaker 5/12v</li><li>• Wi-fi 4G international router</li><li>• Cooling fans/temperature seat control</li></ul>
<b>Controller</b>	MPPT
<b>Weight</b>	70kg

# solar **sylva picnic table**

WYC1909A solar smart table and 2 benches

**Brand new to market, the SYLVA Smart Bench offers the very latest cutting edge technology backed up by superb engineering and fabrication.**

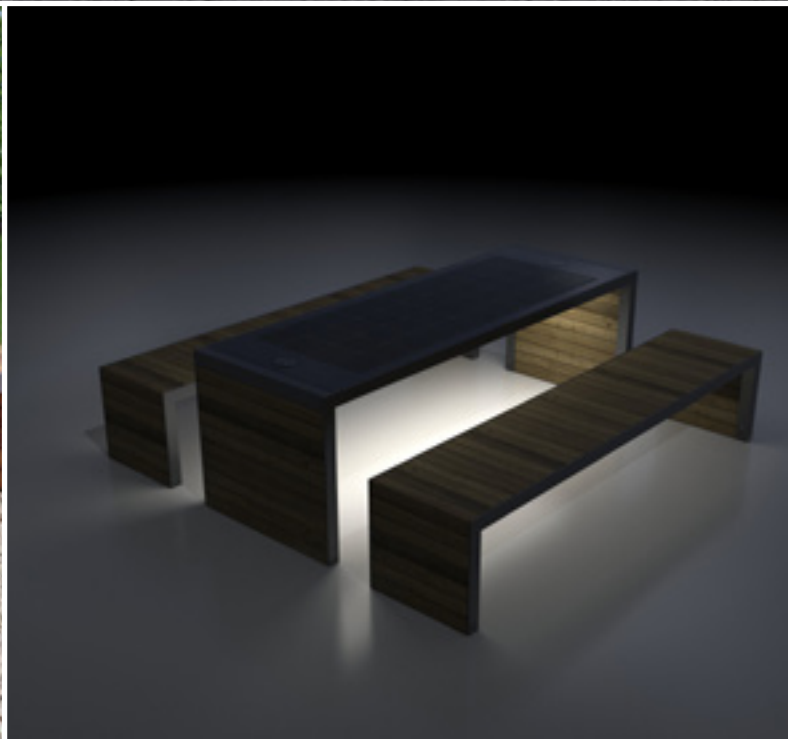
Produced in stainless steel and powder coated to any RAL colour with composite wood panels, the Sylva offers picnic tables as well as benches and standard features include USB and wireless charging, 4G international router, Bluetooth speaker and discreet LED lighting.



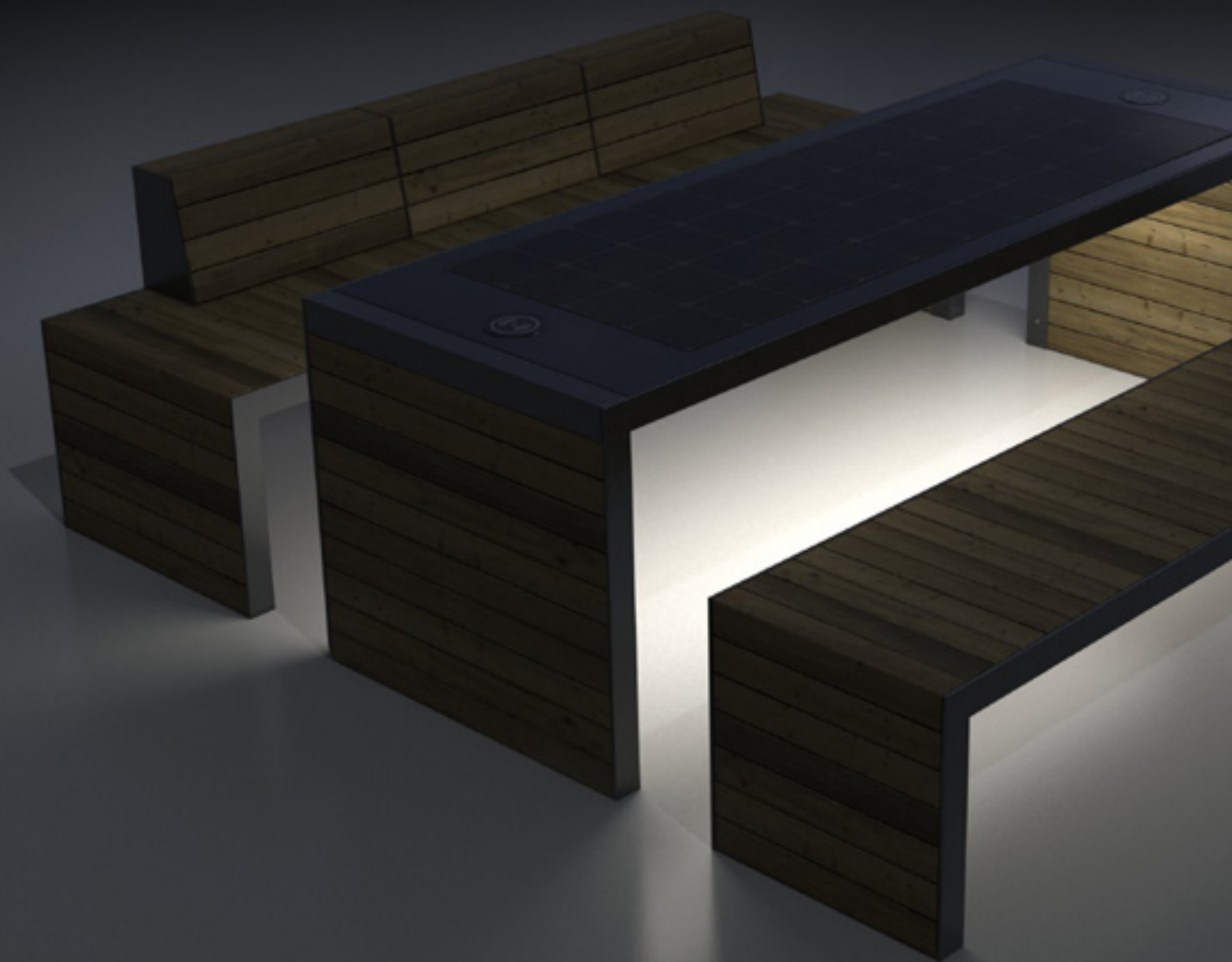
## specifications

<b>Material</b>	Stainless steel frame with composite wood panels
<b>Finish</b>	Powder Coated RAL 7012 Basalt Grey
<b>Dimensions</b>	<b>Bench:</b> L 204cm w 40cm H 45cm <b>Table:</b> L 204cm w 80cm H 80cm
<b>Solar Panel</b>	135W
<b>Battery</b>	12v 55Ah
<b>Features</b>	<ul style="list-style-type: none"><li>• 4no USB ports</li><li>• 2no wireless charging</li><li>• LED lighting - warm white</li><li>• Bluetooth speaker 5/12v</li><li>• Wi-fi 4G international router</li><li>• Cooling fans/temperature seat control</li></ul>
<b>Controller</b>	MPPT
<b>Weight</b>	120kg

3.1



# 3.2



# solar **sylva picnic table**

**WYC1909** smart table + one bench with backrest + one bench without

**Brand new to market, the SYLVA Smart Bench offers the very latest cutting edge technology backed up by superb engineering and fabrication.**

Produced in stainless steel and powder coated to any RAL colour with composite wood panels, the Sylva offers picnic tables as well as benches and standard features include USB and wireless charging, 4G international router, Bluetooth speaker and discreet LED lighting.



## specifications

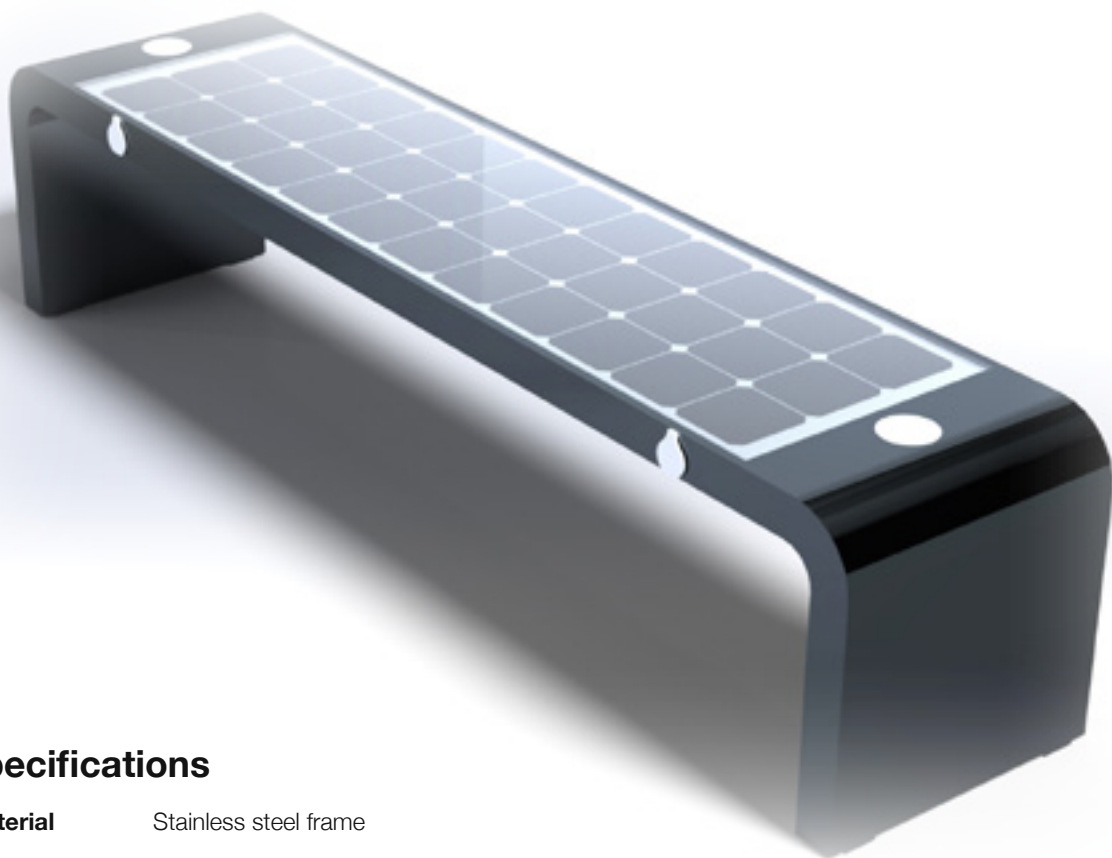
<b>Material</b>	Stainless steel frame with composite wood panels
<b>Finish</b>	Powder Coated RAL 7012 Basalt Grey
<b>Dimensions</b>	<b>Bench:</b> L 204cm w 40cm H 45cm <b>Table:</b> L 204cm w 80cm H 80cm
<b>Solar Panel</b>	90W
<b>Battery</b>	12v 55Ah
<b>Features</b>	<ul style="list-style-type: none"><li>• 4no USB ports</li><li>• 2no wireless charging</li><li>• LED lighting - warm white</li><li>• Bluetooth speaker 5/12v</li><li>• Wi-fi 4G international router</li><li>• Cooling fans/temperature seat control</li></ul>
<b>Controller</b>	MPPT
<b>Weight</b>	130kg

# solar **municipal bench**

WYC1908D Solar Smart Bench

**Brand new to market, the Municipal Smart Bench offers the very latest cutting edge technology backed up by superb engineering and fabrication.**

Produced in stainless steel and powder coated to any RAL colour, the Municipal offers picnic tables as well as benches and standard features include USB and wireless charging, 4G international router, Bluetooth speaker and discreet LED lighting.



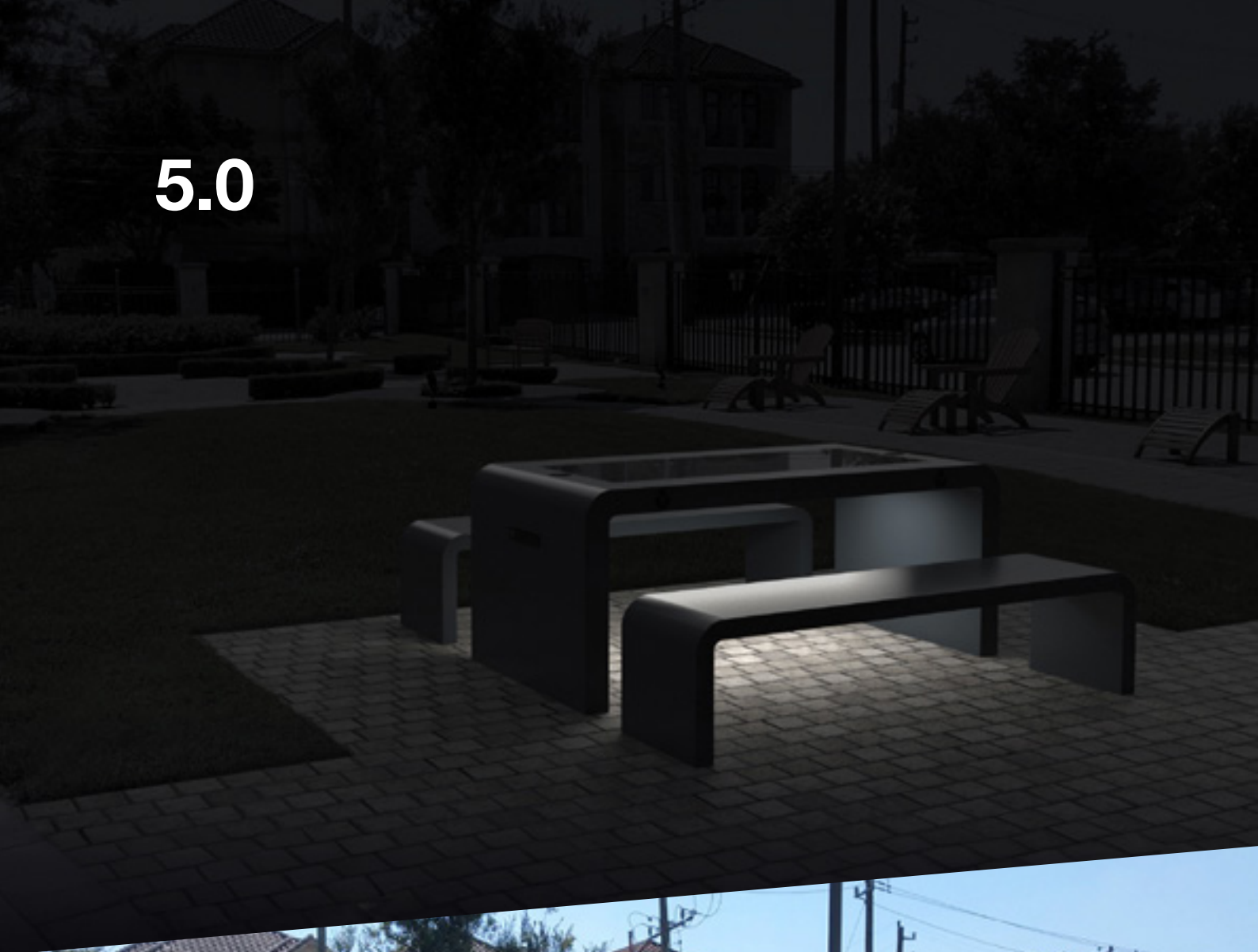
## specifications

<b>Material</b>	Stainless steel frame
<b>Finish</b>	Powder Coated RAL 7012 Basalt Grey
<b>Dimensions</b>	L 204cm W 45cm H 40cm
<b>Solar Panel</b>	105W
<b>Battery</b>	12v 55Ah
<b>Features</b>	<ul style="list-style-type: none"><li>• 2no USB ports</li><li>• 2no wireless charging</li><li>• LED lighting - warm white - sensor</li><li>• Bluetooth speaker 5/12v</li><li>• Wi-fi 4G international router</li><li>• Cooling fans/temperature seat control</li></ul>
<b>Controller</b>	MPPT
<b>Weight</b>	60kg

4.0



5.0

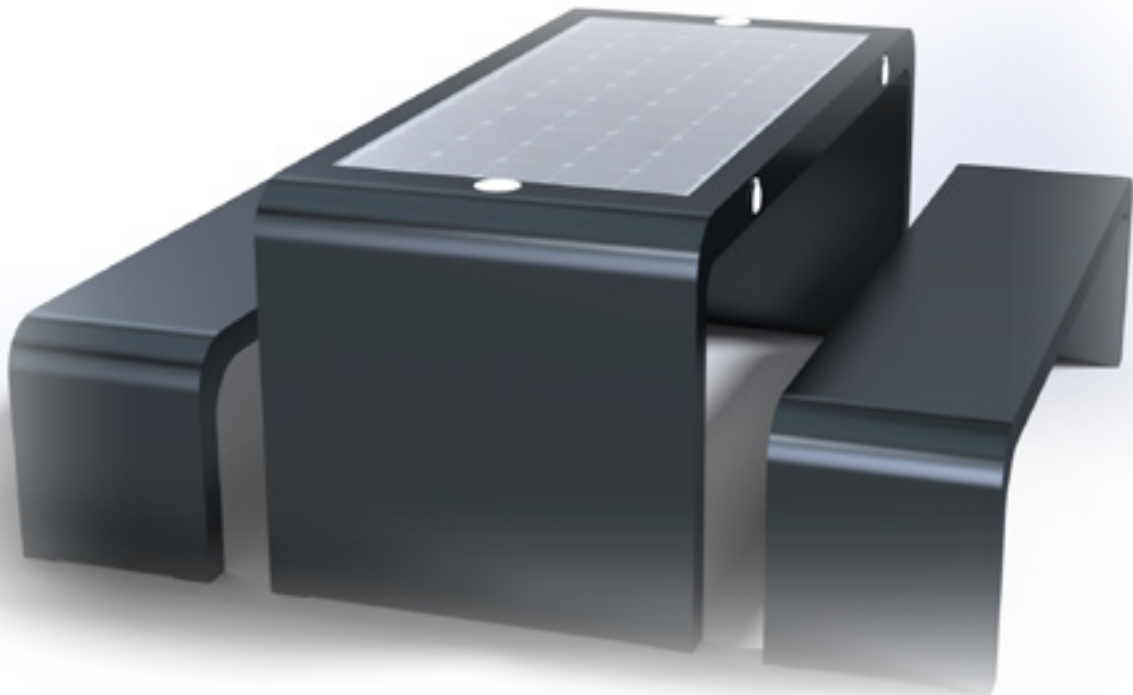


# solar **municipal picnic table**

WYC1908B solar smart table and two benches

**Brand new to market, the Municipal Smart Bench offers the very latest cutting edge technology backed up by superb engineering and fabrication.**

Produced in stainless steel and powder coated to any RAL colour, the Municipal offers picnic tables as well as benches and standard features include USB and wireless charging, 4G international router, Bluetooth speaker and discreet LED lighting.



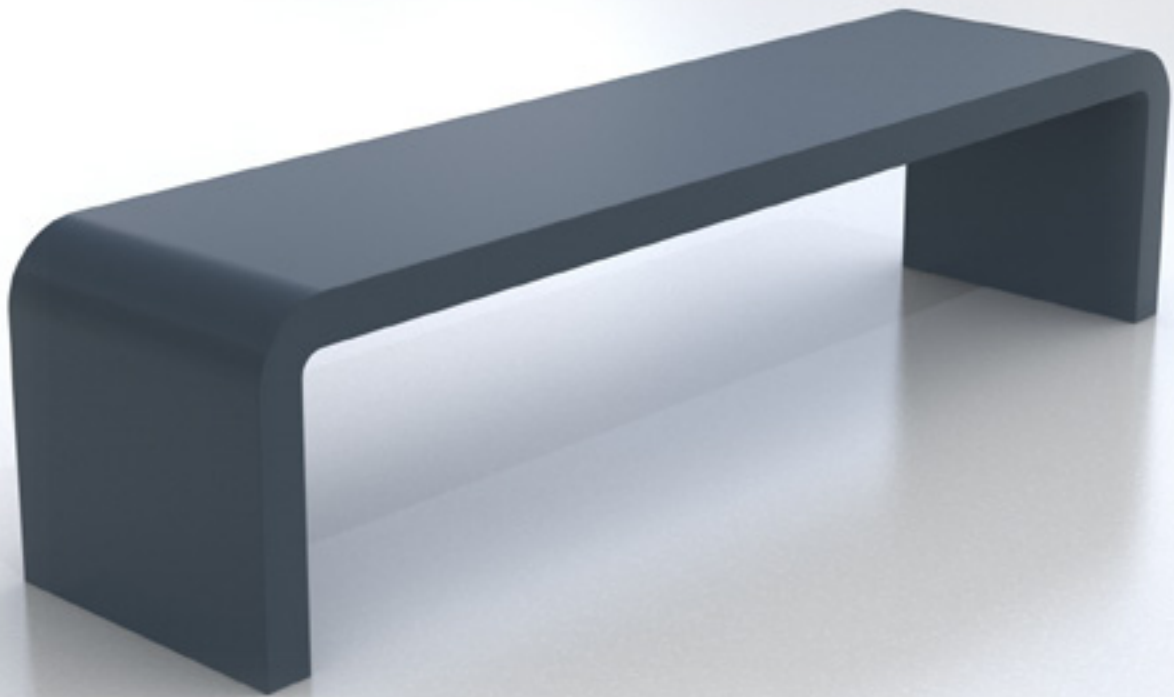
## specifications

<b>Material</b>	Stainless steel frame
<b>Finish</b>	Powder Coated RAL 7012 Basalt Grey
<b>Dimensions</b>	<b>Bench:</b> L 204cm w 45cm H 40cm <b>Table:</b> L 204cm w 80cm H 80cm
<b>Solar Panel</b>	135W
<b>Battery</b>	12v 55Ah
<b>Features</b>	<ul style="list-style-type: none"><li>• 4no USB ports</li><li>• 2no wireless charging</li><li>• LED lighting - warm white</li><li>• Bluetooth speaker 5/12v</li><li>• Wi-fi 4G international router</li><li>• Cooling fans/temperature seat control</li></ul>
<b>Controller</b>	MPPT
<b>Weight</b>	120kg

# no-solar **municipal bench 6.1**

**WYC1908B** municipal bench no solar technology

**Brand new to market, the Municipal Smart Mix up your benches with a combination of solar smart benches and non solar using the same design.**



## **specifications**

<b>Material</b>	Stainless steel
<b>Finish</b>	RAL 7012 basalt grey
<b>Dimensions</b>	L204cm x W45cm x H40cm

# no-solar **sylva bench**

# 6.2

WYC1909G sylva bench no solar technology

**Brand new to market, the Sylva Smart Mix up your benches with a combination of solar smart benches and non solar using the same design.**



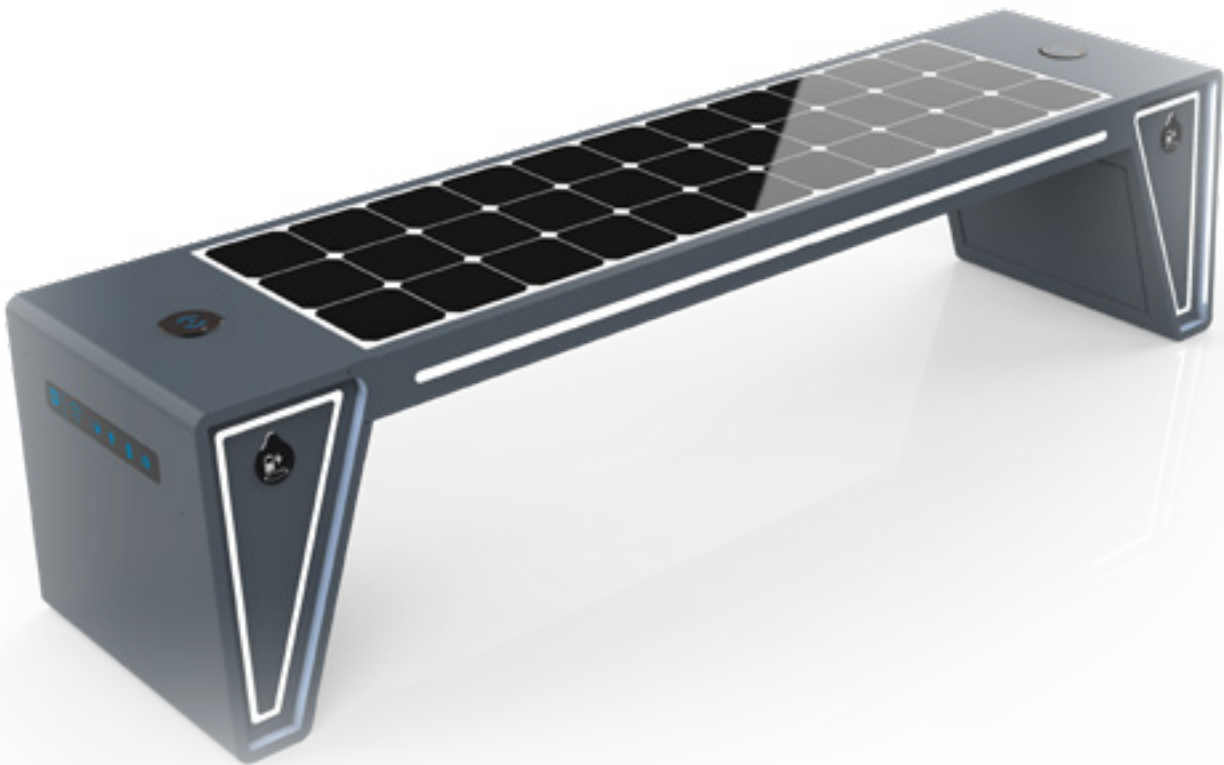
## specifications

<b>Material</b>	Stainless steel with composite wood panels
<b>Finish</b>	RAL 7012 basalt grey
<b>Dimensions</b>	L204cm x W45cm x H40cm

# solar blade bench

WYC1817

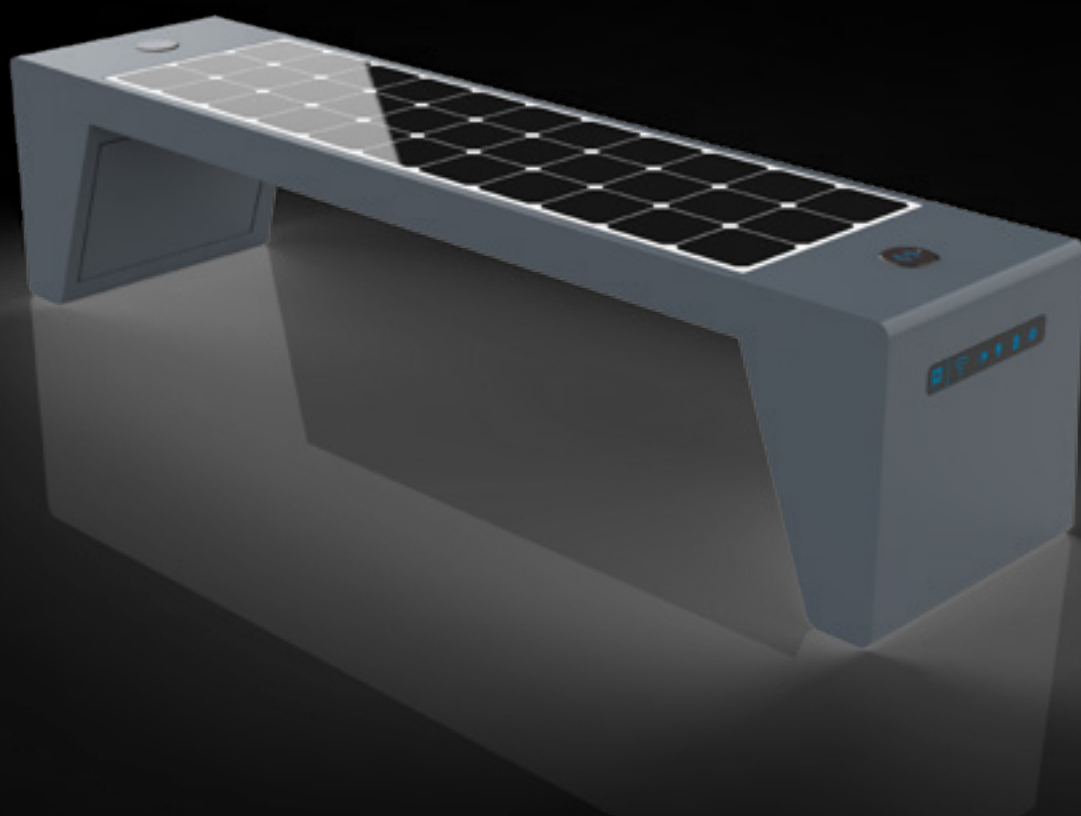
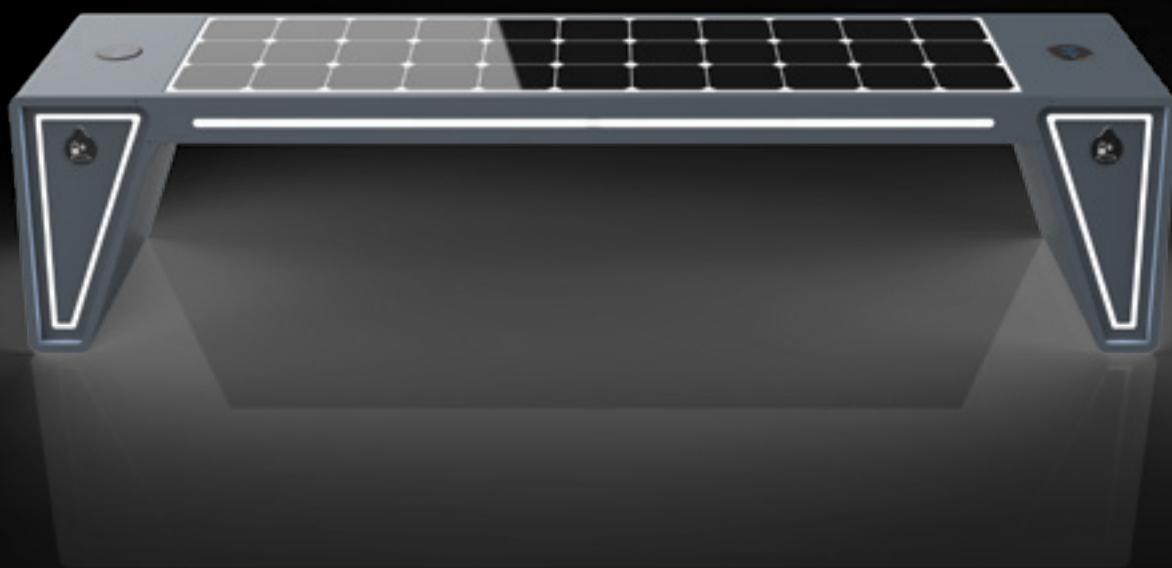
Cutting edge design backed up with the very latest solar technology and engineered to the highest quality. Additional features include customised LED lighting in framework of bench.



## specifications

<b>Material</b>	Stainless steel frame
<b>Finish</b>	Powder Coated RAL 7012 Basalt Grey
<b>Dimensions</b>	L 191cm w 48cm H 45cm
<b>Solar Panel</b>	105W
<b>Battery</b>	12v 55Ah
<b>Features</b>	<ul style="list-style-type: none"><li>• 2no USB ports</li><li>• 2no wireless charging</li><li>• LED lighting - warm white</li><li>• Bluetooth speaker 5/12v</li><li>• Wi-fi 4G international router</li><li>• Cooling fans/temperature seat control option</li></ul>
<b>Controller</b>	MPPT
<b>Weight</b>	80kg

7.0



**The solar post functions from dusk till dawn with the LED light set at 30% brightness with a sensor activating the LED light to 100% Brightness on approach.**

**8.0**



# solar post 100/200/300

WYL1802 solar post single-sided 180° lighting

**The solar post 100/200/300 is a 1metre/2metre/3metre high solar powered post designed for both commercial and residential use, offering the very latest cutting edge solar technology backed up with the highest quality engineering**

The solar posts are ideal for parks, roads, campuses, drives, paths, housing developments and public spaces. Produced in stainless steel and powder coated the PV panels on 3 sides have enough PV wattage for the product to operate in any climate.



<b>Dimensions</b>	L16.6cm W 16.6cm H 100cm/200cm/300cm
<b>Material</b>	Stainless Steel
<b>Finish</b>	Powder Coated RAL 7016
<b>Solar Power</b> sides)	54W/108W/162W, 18W/36W/54W per side (3
<b>Battery</b>	3.7V/12V 10AH
<b>LED</b>	1 Watt
<b>Lumens</b> Brightness	110lm at 100% Brightness and 33lm at 30%
<b>Light Colour</b>	Cool White 6000k or Warm White 3000k IP65
<b>Warranty</b>	2 years

9.0

The solar post functions from dusk till dawn with the LED light set at 30% brightness with a sensor activating the LED light to 100% Brightness on approach.



# solar quad 100/200/300

WY1801A / 1M / 2M / 3M solar quad four-sided 360° lighting

The solar quad post comes in heights of 1m 2m and 3m. produced from stainless steel and finished in any RAL colour the LED light spreads 360 degrees.

- Sensor activated with 100% brightness on approach operating from dusk to dawn.
- Ideal application for parks, roads, campuses, drives, paths, housing developments and public spaces.
- These light settings have been designed for the northern European climate.



## specifications

- **Dimensions** Solar Quad 100: 1 Meter  
Solar Quad 200: 2 Meter  
Solar Quad 300: 3 Meter
- **Material** Stainless Steel
- **Finish** Powder Coated RAL 7016
- **Solar Power** Solar Quad 100: 48w  
Solar Quad 200: 96w  
Solar Quad 300: 144w
- **Battery** Solar Quad 100: 12v 10Ah  
Solar Quad 200: 12v 20Ah  
Solar Quad 300: 12v 30Ah
- **LED** Solar Quad 100: 1 Watt  
Solar Quad 200: 2 Watt  
Solar Quad 300: 3 Watt
- **Lumens** 110lm at 100% Brightness  
33lm at 30% Brightness
- **Light Colour** Cool White 6000k  
or Warm White 3000k  
IP65
- **Warranty** 2 Years

# solar eye

## SECWS / SECWBH

**Solar powered lighting that gently illuminates and outlines cycle paths and footpaths.**

- Reduced installation & operational costs
- Wayfinding light
- Tested and Reliable
- Extremely Tough
- LFP Battery
- Visibility
- CE accreditation
- Conservation Friendly



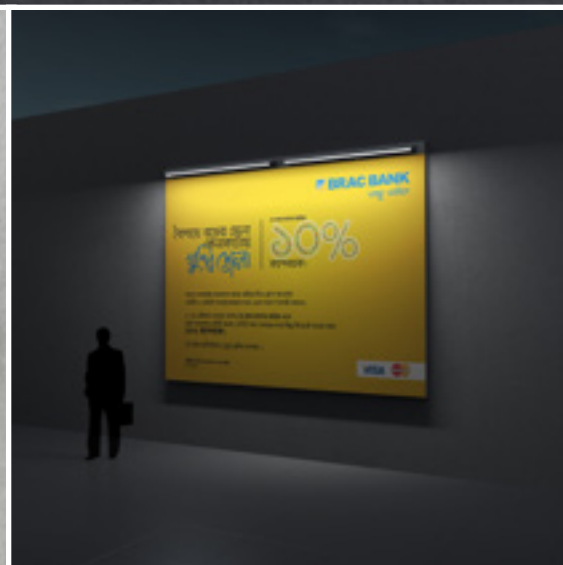
## specifications

<b>Material</b>	High impact durable engineering grade polymer
<b>Light source</b>	LED (100,000 hrs life)
<b>Battery</b>	Long life LFP battery (8 years+ anticipated)
<b>Working temperature</b>	-20°C to +70°C
<b>Body dimensions</b>	100mm (lip) and 80mm body
<b>Installed height</b>	6mm nominal
<b>Milling depth</b>	30mm
<b>Weight</b>	275g
<b>Fixing adhesive</b>	2 component moisture tolerant epoxy
<b>Working time</b>	Full charge Flashing red 300hrs+, white steady 200hrs+
<b>Flash rate</b>	1 sec on, 1 sec off
<b>Waterproof quality</b>	IP68
<b>Impact rating</b>	1K10
<b>Accreditation</b>	CE accredited
<b>Visibility</b>	High - up to 500m
<b>Light sensor</b>	Auto on/off

10.0



# 11.0



# solar boom

ELS-04A / ELS-04B / ELS-04C

## High quality solar powered overhead light unit

Ideal for poster cases, noticeboards, billboards, signage and retrofitting the product comes in 3 different sizes – 300mm 600mm and 1200mm. Dusk to dawn lighting - 5hrs brightness from dusk then dims to 20% brightness to dawn to cope with UK winter climate.



## specifications

<b>Material</b>	Extruded Aluminium Anodized Dark Grey
<b>Lumens Levels</b>	100-120 lumens per watt
<b>LED Life</b>	50000 hours
<b>Battery</b>	3.7v – 3-5yrs life depending on location
<b>Light</b>	Colour Cool White 6000k
<b>Working Temp.</b>	-25 to +65 c
<b>Warranty</b>	3 Years
<b>Standard Sizes</b>	300 / 600 / 1200mm

# solar case

SCA2W / SCA2P / SCA1N / SCA1P / SCA0W / SCA0P

**The Solar Case is a solar powered illuminated LED case.**

Built as an exterior cabinet it provides a stylish, practical and efficient way to display information throughout the day and night in this high grade display cabinet.

Essentially it is an outdoor notice board in a robust case that will last for years.



## specifications

- LED illumination
- Light colour 6000k
- Pv panel wattage
- 300mm 5w
- 600mm 10w
- 1200mm 20w
- Beam angle 20 degrees
- Lumens
- 300mm 500lm | 600mm 1000lm | 1200mm 2000lm
- Lion battery 3.7v all sizes

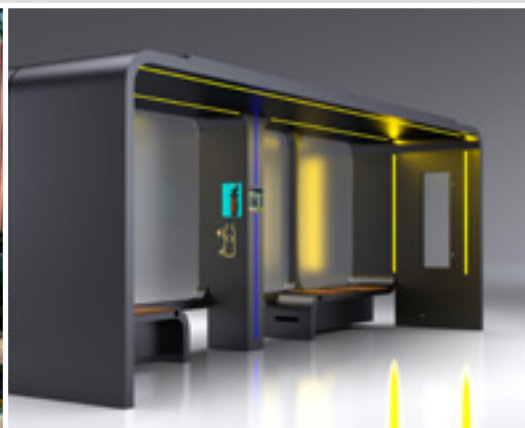
## lighting - solar boom

- 3 Standard sizes 300mm/600mm/1200mm
- Dark grey anodised
- Zero energy costs
- CO2 neutral
- 5 yr battery life
- DC charging option
- Simple installation - (no hard wiring)
- Sensor systems - 25% brightness and 100% brightness on approach
- Remote control activation 4/6/8 hrs then off
- Operating temp -25C to +65C
- Weatherproof IP65

12.0



# 13.0



# solar shelter

WYS1816

**A stunning new design incorporating a solar shelter that can be used at bus stops, train stations, terminals and campuses.**

Fabricated from stainless steel and powder coated to any colour the solar shelter has toughened glass panels and includes LED lighting, LED poster cases and a smart bench to provide wireless and USB charging. The bench also provides a built in 4G international router

*Available in widths of 3 or 4 meters the smart shelter provides the very latest cutting edge technology all powered by a 420 watt solar panel built into the roof.*



## specifications

<b>Dimensions</b>	4000mm H x 1100mm W x 2220mm D
<b>Material</b>	Stainless Steel #201 Tempered Glass + WPC wood
<b>Solar Panel</b>	Monocrystalline Silicon, 420W
<b>Controller</b>	MPPT
<b>Battery Type</b>	Gel battery
<b>Battery Capacity</b>	12V/200AH
<b>USB Charger</b>	2
<b>Led Light</b>	LED Strip light inside, working with sensor
<b>Advertising Display</b>	800mm H x 384mm W Double Sided
<b>Bluetooth speaker</b>	5/12V
<b>WIFI router</b>	4G / International router
<b>LED screen</b>	P6 full colour 480mm H x 320mm W

# solar canopy

WYC1812

A stunning new design incorporating a solar canopy, table and benches.

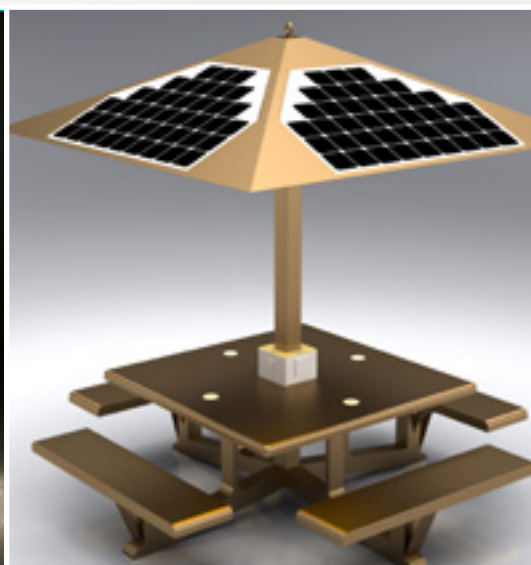
Complete with USB and wireless charging, LED ambient lighting, 4G internet and Bluetooth speakers.



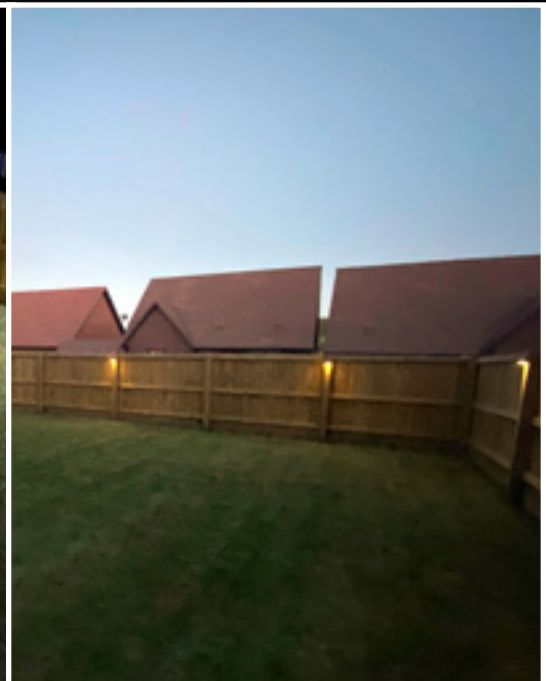
## specifications

<b>Material</b>	Stainless Steel #201 + WPC Wood
<b>Dimensions</b>	Length 230cm Width 140cm Height 237cm
<b>Solar Panel</b>	200W
<b>Battery Capacity</b>	12V, 110AH
<b>Controller Type</b>	MPPT
<b>Weight</b>	Estimated 200kg
<b>DC- AC Converter</b>	Optional
<b>USB Charger</b>	2
<b>Wireless Charger</b>	2
<b>Ambient Light</b>	LED Spot Lights
<b>Bluetooth Speaker</b>	5/12V
<b>Wi-fi</b>	4G / International router

14.0



15.0



# solar **wall mars**

## SWM

**The solar wall mars is an ideal lighting solution for residential and commercial properties.**

Mars has a choice of settings using a sensor system giving the option of all night illumination on low light or just bright up on approach. Easy to install and competitively priced with warranty support.



## **specifications**

- Led 10 w 1000lm ( full brightness)
- Battery 3.6v 2000mAh
- Light colour 4000k
- Pir sensor 5-10m
- IP65 weatherproof
- Warranty 1yr

## **settings**

- 1. 0lm - pir 1000lm 10 secs
- 2. 20lm - pir 1000lm 10 secs
- 3. 20lm dusk to dawn

# solar **post mars**

## SPM

**An elegant solar powered illuminated bollard with sensor system offering 3 different lighting settings depending on the climate of each country.**

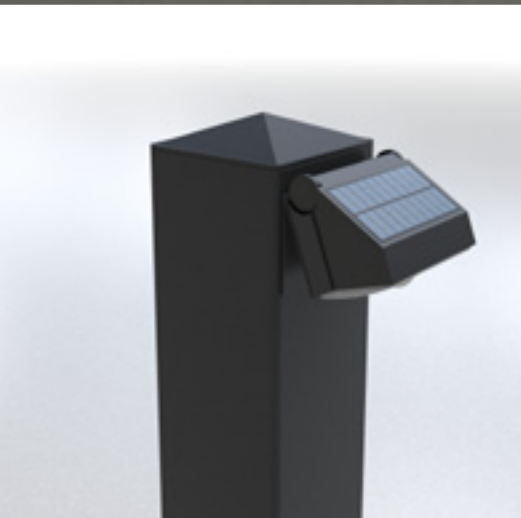
Ideal for parks, paths, campuses, drives and public spaces, the solar mars post offers incredible value for money.



## specifications

- **Material** Zero Energy Costs
- **Colour** Aluminium powder coated black
- **Dimensions** Length 100cm  
Width 10cm  
Height 10cm  
1m Post
- **Custom Light Setting** Time settings to suit each country
- **Lighting** LED 10w 1000lm (Full Brightness)
- **Light Colour** 4000k
- **Sensor** PIR Sensor
- **IP** IP65
- **Warranty** 12 Months

16.0



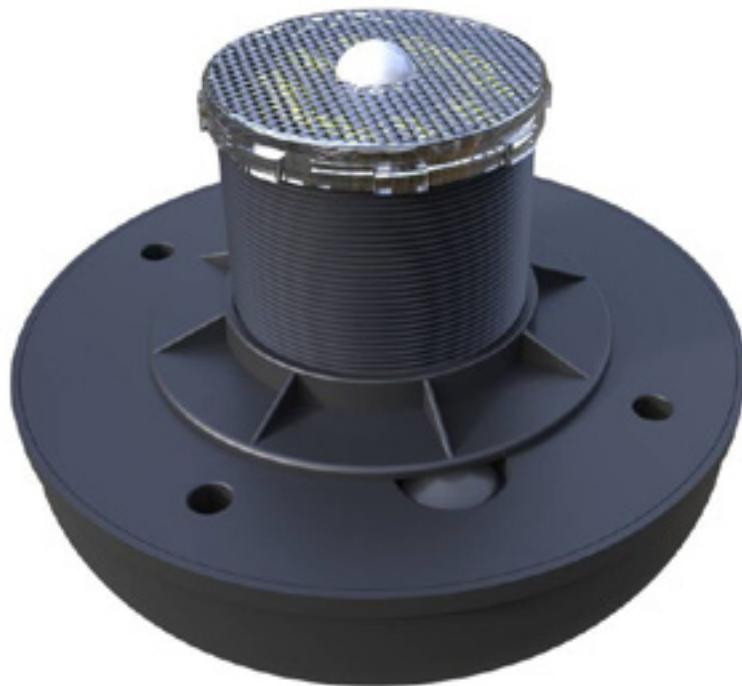
# solar downlighter

## SWDL

illuminate your portable conveniences, outdoor buildings and shelters efficiently with the solar downlighter.

this solar powered roof light is designed with a built-in sensor to provide automatic lighting when needed.

the solar downlighter is the ideal solution for ensuring bright, reliable lighting in outdoor settings without the need for hard wiring or an external power source.



## specifications

Model	SHL-06
Solar panel	5v 1.2w
Lumens	300lm
Battery	2000mAh
Material	ABS
Colour	black
PIR	sensor
Warranty	2 yrs
Working temp	-25 + 60

17.0



# solar hybrid charger

## WYL2401 solar charger

This solar post is an electric vehicle charger station, working on hybrid energy.

The light is at 30% brightness from dawn to dusk and 100% brightness when people are charging cars.

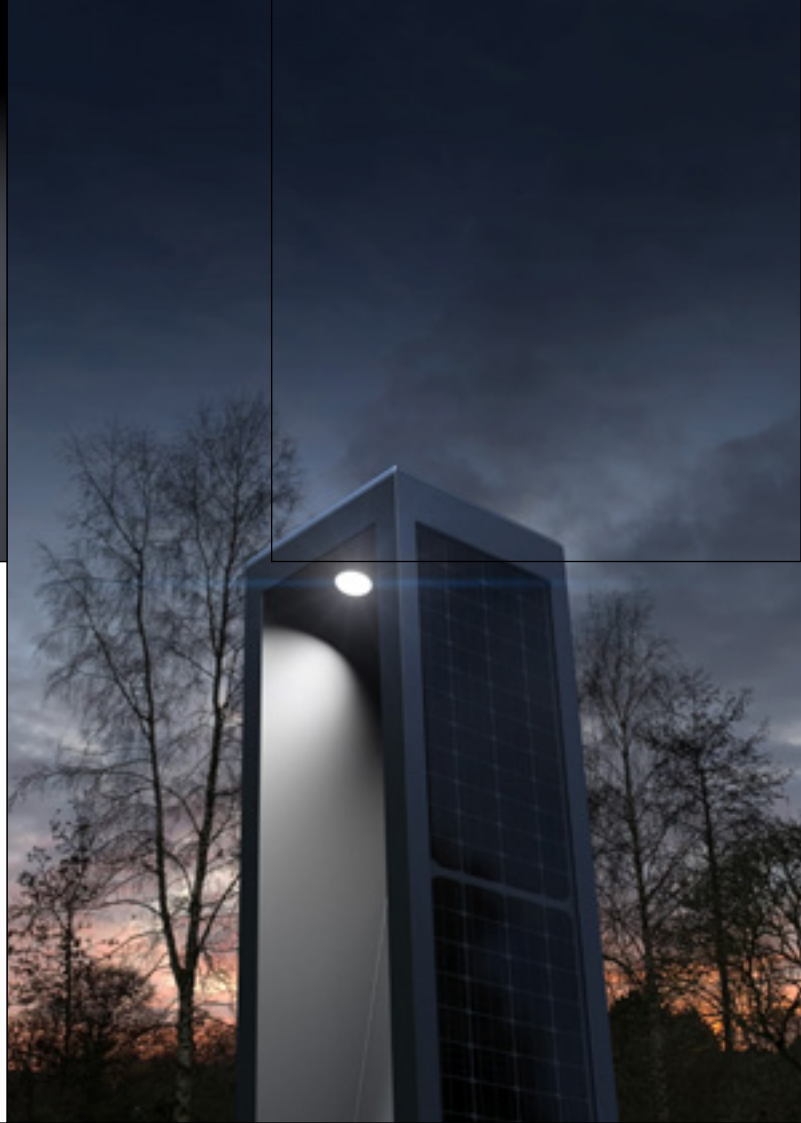
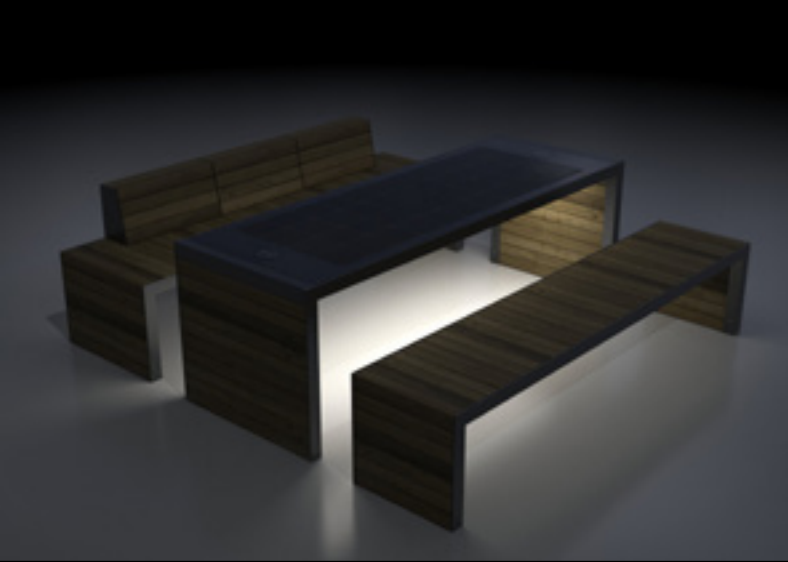


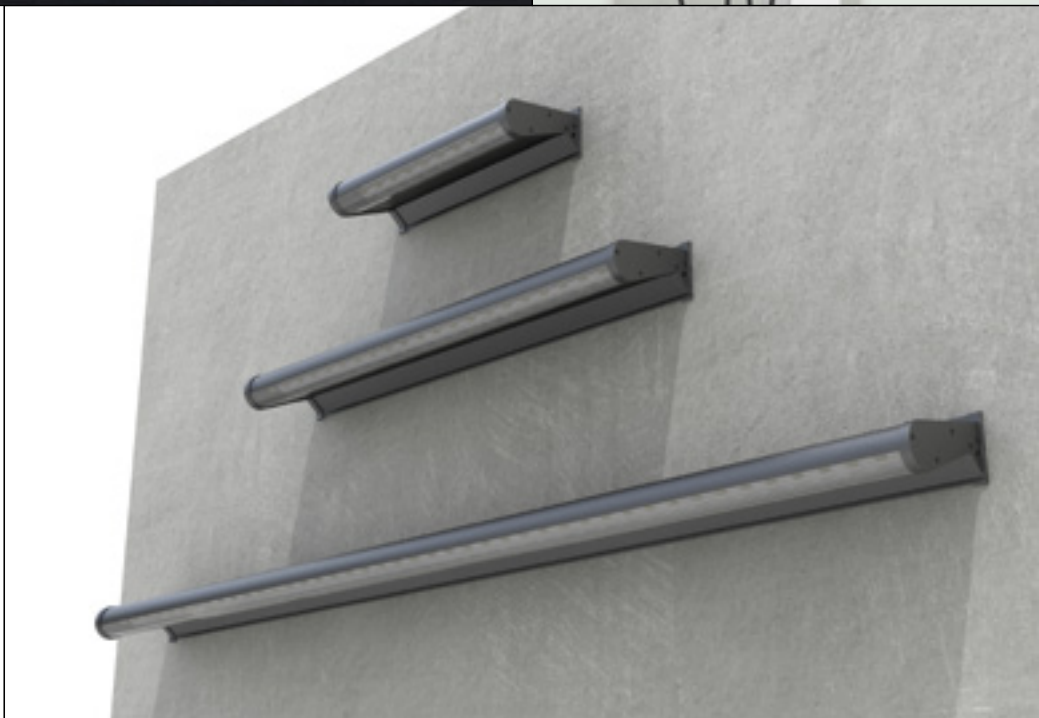
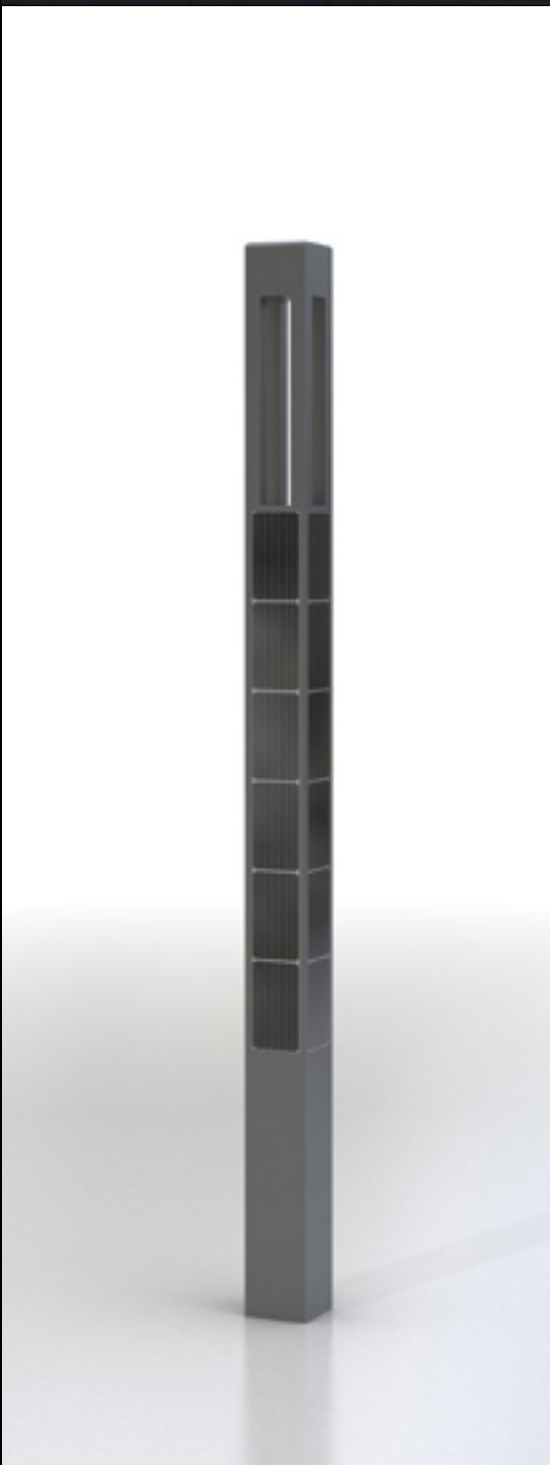
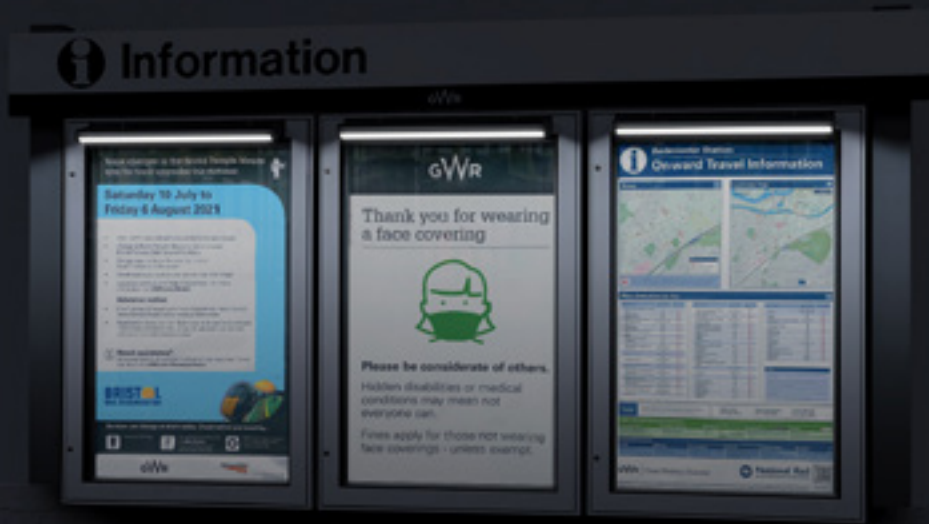
## specifications

<b>Material</b>	Stainless steel frame #201
<b>Dimensions</b>	L 18cm w 18cm H 200cm
<b>Solar Panel</b>	62W
<b>Battery</b>	12v 20Ah
<b>Features</b>	<ul style="list-style-type: none"><li>• LED spot light, warm white, 3w</li><li>• RGB colour change indicates charging status</li><li>• 1pc gun head</li><li>• 3m / 5m cable length</li><li>• 50Hz Operating Frequency</li></ul>
<b>Weight</b>	50kg

18.0









## thesolarrange

All products are designed assembled and distributed at our dedicated premises in the United Kingdom.

The Solar Range Limited are the exclusive global distributor in partnership with Adlis smart and Nvidia.



**ADLIS  
SMART**

**bynet**  
*Data Communications Ltd*



**NVIDIA.**  
INCEPTION  
PROGRAM

---

### contact

[sales@solar-range.com](mailto:sales@solar-range.com)

**01392 247577**

**+44 7969 138 692**

#### Exeter Office

Queensgate House, 48 Queen Street,  
Exeter, Devon, EX4 3SR

#### London Office

124 - 128 City Road, London, EC1V 2NX



[www.solar-range.com](http://www.solar-range.com)

---