

Blox A - Cycle Shelter BXMW/BLOX/A/41/OF-FSC



Standard Unit Dimensions:

Width: 2000mm
+ 500mm cantilever
Height: 2200mm

Length with Capacities:

4100mm (10 cycles)
5000mm (12 cycles)

Timber Colours/Finishes:



European Redwood

Framework Colours/Finishes:

Galvanised Only	RAL 9006 White Aluminium	RAL 7016 Anthracite Grey
BS 4800 10 A 07 Nimbus Grey	RAL 3020 Traffic Red	RAL 9005 Jet Black
BS 4800 14 C 39 Holly Green	RAL 1023 Traffic Yellow	BS 4800 00 A 05 Goose Grey
RAL 5015 Mid Blue	RAL 5013 Dark Blue	RAL 9016 Traffic White
BS 4800 20 C 40 Midnight Blue	BS 4800 18 B 25 Dark Admiralty Grey	RAL 6005 Moss Green

The colours shown are a guide only.
Please check a colour chart to see the actual colour.

Product Information

Cantilevered modular FSC[®] (FSC-C122338) timber clad cycle shelter with galvanized steel frames. The Blox A cycle shelter is a timber and steel framed shelter which is available for 10 or 12 cycles. This shelter can also provide a multi purpose solution for different eventualities inclusive of but not limited to hand washing stations and more.

Features

- Modular galvanized shelter frame with Colorcoat roof
- A variety of hardwood and softwood timbers are available
- Open front entrance

Materials Used

- Framework - Mild steel
- Cladding - European redwood

Finish Options

- Galvanised to BS EN ISO 1461:2022
- Galvanised to BS EN ISO 1461:2022 & Polyester Power Coated

Fire Resistance

Additional treatment available at additional cost

Broxap Limited, Rowhurst Industrial Estate, Chesterton, Newcastle-under-Lyme, Staffordshire, ST5 6BD T: 01782 564411 E: info@broxap.com W: www.broxap.com



Blox A - Cycle Shelter BXMW/BLOX/A/41/OF-FSC

Guarantees, Warranties, Design-Life and Life-Expectancies

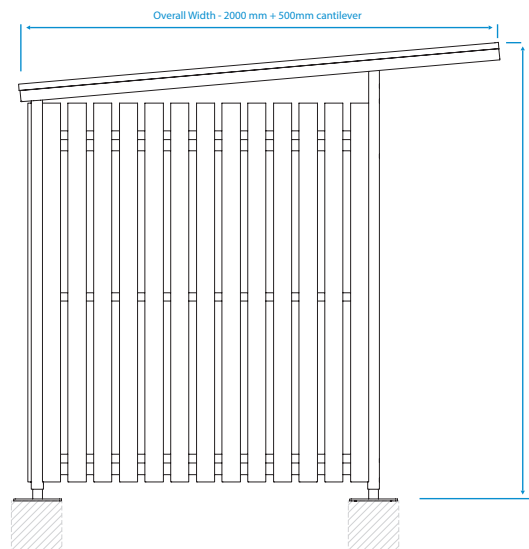
- 25 year structural guarantee*
- 34 year (min) life expectancy for Hot Dip Galvanizing
- 8-10 year life expectancy on standard powder coatings
- 10-15 year life expectancy on Duplex (Zinc Coated) powder coatings
- 10 years' manufacturers guarantees* on cladding material(s)
- 10 years' warranty* on material (only)
- 12 months' warranty* on parts & labour

*Maintenance and other qualifying criteria apply

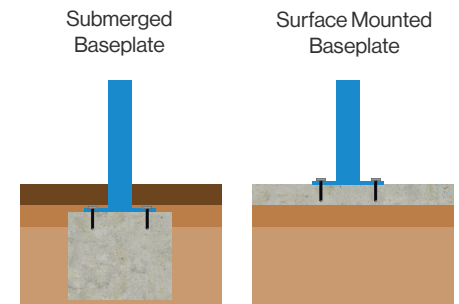
Options

- Varied Range of Cycle Racks
- Varied Range of Cycle Stands
- 5000mm length and 12 cycle capacity available
- Powder coated framework
- Bespoke Blox cycle shelters also available
- Galvanized Sheffield Cycle Rack to suit
- LED lighting or solar lighting
- Full installation service

Diagram



Installation



Standard Unit Dimensions:

Width: 2000mm
+ 500mm cantilever
Height: 2200mm

Length with Capacities:

4100mm (10 cycles)
5000mm (12 cycles)

Timber Colours/Finishes:



Framework Colours/Finishes:

Galvanised Only	RAL 9006 White Aluminium	RAL 7016 Anthracite Grey
BS 4800 10 A 07 Nimbus Grey	RAL 3020 Traffic Red	RAL 9005 Jet Black
BS 4800 14 C 39 Holly Green	RAL 1023 Traffic Yellow	BS 4800 00 A 05 Goose Grey
RAL 5015 Mid Blue	RAL 5013 Dark Blue	RAL 9016 Traffic White
BS 4800 20 C 40 Midnight Blue	BS 4800 18 B 25 Dark Admiralty Grey	RAL 6005 Moss Green

The colours shown are a guide only.
Please check a colour chart to see the actual colour.

Broxap Limited, Rowhurst Industrial Estate, Chesterton, Newcastle-under-Lyme, Staffordshire, ST5 6BD T: 01782 564411 E: info@broxap.com W: www.broxap.com

