



hms

High Friction Surfacing Project

Cycle Network, Oxford

HAPAS BBA-approved cold high friction surfacing, applied to cycle routes in and around Oxford city centre.



Client

Oxford District Services



HMS Decorative Surfacing helping to encourage Oxford drivers out of their cars!

In January 2024, Oxford City Council gave the green light to a new £106,000 walking and cycling project that will provide a network of routes across the city to encourage drivers out of their cars!

This approach aims to separate different modes of transport and minimise interaction by creating distance between cyclists and motorists. This makes the alternative to driving a more attractive option, which in turn decreases the number of drivers on the roads.

Oxford City Council appointed ODS to manage the project who then selected HMS Decorative Surfacing to install the high friction or anti-skid surfacing for the new walking and cycle network.



HAPAS BBA



Anti-skid



Cycle route



RESULTS

BBA HAPAS Type 1

BBA-approved installer laying Type 1 cold-applied high friction surfacing to 600m² of cycle network routes.

Safer for the public

By installing high friction surfacing to the new walking and cycle network, it has created a safer, more attractive network of routes across Oxford

Zero carbon Oxford

The new cycle routes will significantly improve walking and cycling numbers across the city helping Oxford to meet the council's strategic objective of becoming a Zero carbon city

"We were looking for a BBA-approved installer with a proven track record and HMS exceeded our expectations. Their experience, accreditations and portfolio truly speak for themselves,"

Sam Bowler
Contracts Manager

Why high friction surfacing?

The primary goal of the new walking and cycle network is to enhance safety, and therefore, render the scheme more attractive to those who previously avoided cycling due to safety concerns.

High friction surfacing significantly improves road safety. Firstly, it improves control by increasing grip, reducing the risk of accidents caused by sliding or skidding.

Secondly, it reduces stopping distances by allowing cyclists to stop quickly and safely, helping to prevent potential accidents.

Finally, it helps maintain separation between two modes of transport. The colour difference demarcates the walking and cycle lane, ensuring drivers stay out, while alerting them to the change in road surface if they accidentally cross into it.



Why HMS Decorative Surfacing?

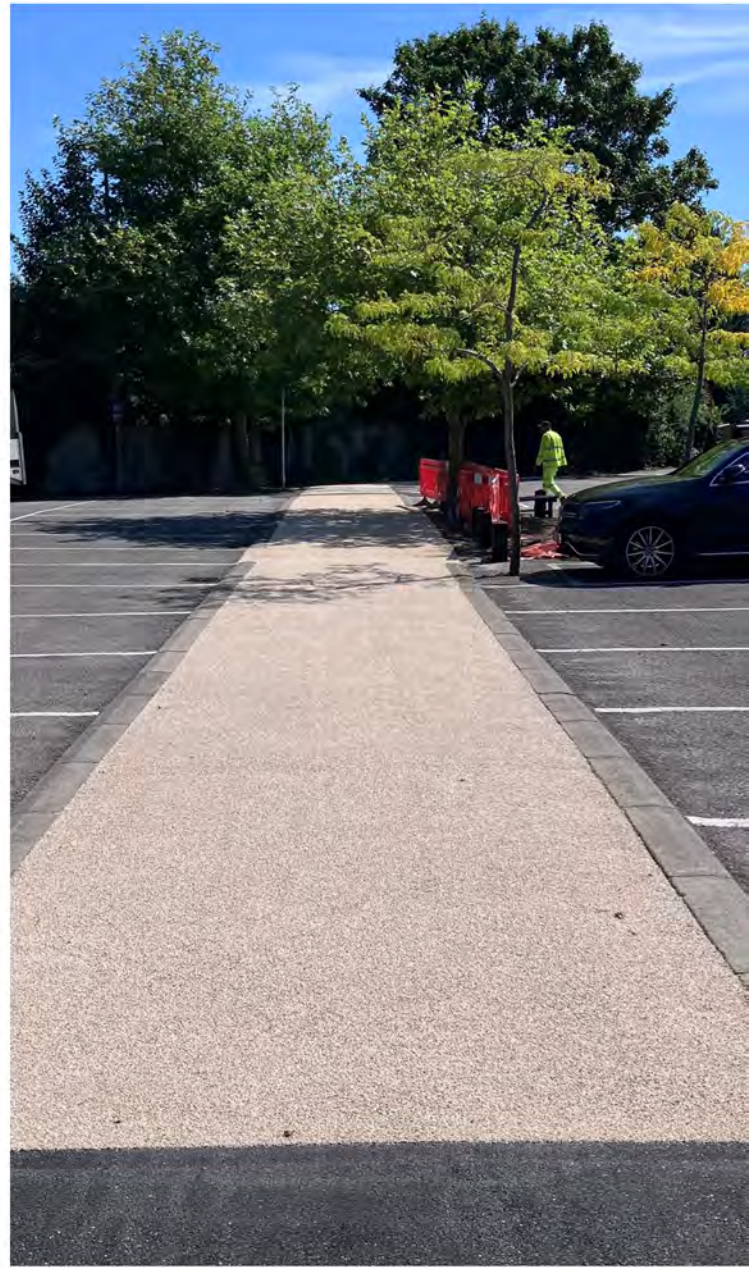
HMS have more than 30 years of experience laying high friction hot and cold-applied surfacing. What's more, we are a BBA-approved installer and use HAPAS BBA Type 1 approved surfacing system for all anti-skid installations.

"HMS Decorative Surfacing has played a crucial role in helping Oxford City Council encourage drivers to leave their cars behind. By installing high friction surfacing to the new walking and cycle network, they have created a safer, more attractive network of routes across Oxford."

"With over 30 years of experience and a track record of excellence, HMS is a BBA-approved installer using only the highest quality HAPAS BBA Type 1 approved bauxite for anti-skid installations. Their impressive portfolio and certifications were key factors in our decision."

"The new network now covers 600m² of Oxford City Centre, including key areas such as the Oxford Leisure Centre and Roger Dudman Way and has significantly improved walking and cycling safety across the city."

Sam Bowler
Contracts Manager



"With over 30 years of experience and a track record of excellence, HMS is a BBA-approved installer where their impressive portfolio and certifications were key factors in our decision."



HMS Decorative Surfacing
www.hmslimited.co.uk
01858 881111

Unit 1, Evergree Field Farm,
Pincet Lane, North Kilworth
Leicestershire, LE17 6NE