



PROJECT CASE STUDY

Luxury Apartments, Ashford

PROJECT

Resin bound paving application for landscaped communal gardens, car Park, and cycle lane.

CLIENT NAME

Victoria Point, Luxury Apartments in Ashford.

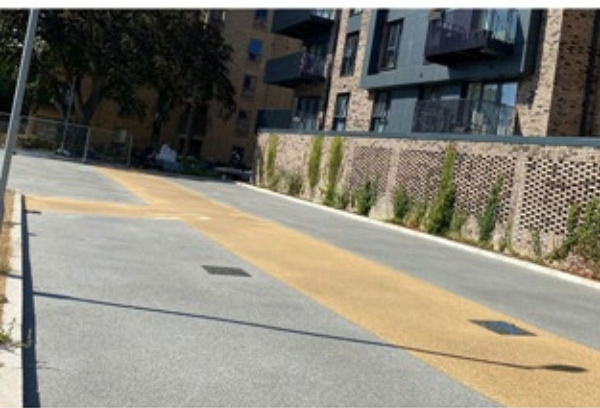


DISCOVER WHY VICTORIA POINT CHOSE HMS AS THEIR PREFERRED RESIN BOUND PAVING INSTALLER

HMS were appointed to lay specialised resin bound paving to the communal gardens, car park, and cycle lane.

PROJECT OVERVIEW

- **Sector:** Housing Developers
- **Location:** Ashford, Kent
- **Product:** Resin Bound Paving
- **Colour:** Steel Grey & Golden Amber
- **Application:** Right-of-way cycle lane, car park demarcation, communal gardens, and footpaths.
- **Area:** Approx. 1,000 m²



RESULTS

36 tonnes of aggregate

In total, we laid 36 tonnes of aggregate and used 340 resin kits to deliver beautiful communal gardens that will continue to look great for years to come.

Visually Appealing

The cycle lane and car park demarcation look stunning with the contrast of the steel grey and golden amber.

What they said

"HMS kept us informed at every stage of the project, which enabled us to communicate with the residents and arrange alternative parking."

"Their efficiency and workmanship ensured the job was completed in a timely manner and the team left the site clean and tidy."

Hayley, Concierge
Victoria Point

THE PROJECT

Prior to installation, the area needed to be fully swept and cleared of any vegetation, leaves and other rubbish to ensure the resin bound paving system didn't fail.

On top of this, there was also the need to complete a small amount of tarmac repairs before the installation could begin.

As the site was no longer in construction, HMS also facilitated the car park closure and traffic management, site cabins and mobilisation equipment, with support from the building management.

We were on-site for two weeks during which time we rearranged resident parking, placed cabin on-site by crane in, and accepted two full artic lorries on a busy residential street.

We communicated with the client throughout the duration of the project, ensuring they were kept up-to-date on progress and the finer day-to-day details were managed between ourselves and the building management.



KEY STEPS



SITE SURVEY

A thorough survey was conducted to ensure a sufficient subbase and drainage.



MATERIAL SELECTION

We helped them to select the most appropriate colour options for the cycle lane demarcation.



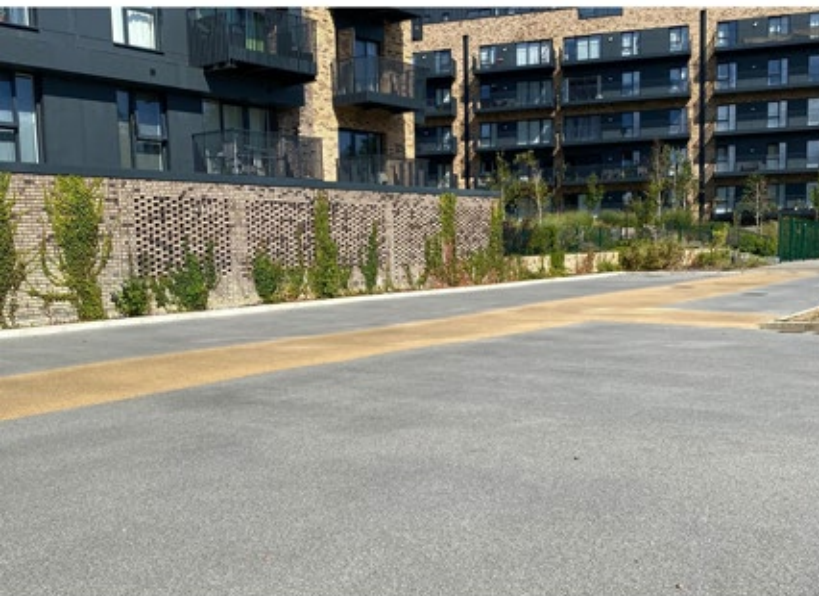
SURFACE PREPARATION

We ensured surfaces were free from dirt, muck, and debris and ready for us to lay.



INSTALLATION

Our team's meticulous attention to detail ensured a flawless finish across all areas of the project.



If you're looking for a stunning surface to complement your project then resin bound is for you!



HMS Decorative Surfacing
www.hmslimited.co.uk
01858 881111

Unit 1, Evergreen Field Farm,
Pincet Lane, North Kilworth
Leicestershire, LE17 6NE