

Francis Crick Institute and Dumfries & Galloway Royal Infirmary Bespoke Designs ~ Grating Fences



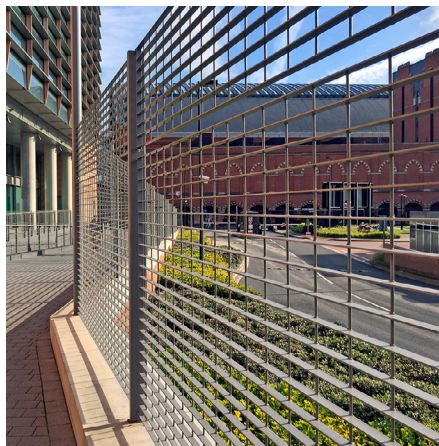
A perimeter fence can provide much more than security and boundary demarcation.

With imagination and thoughtful design the material and form of the fencing can be chosen to complement and enrich the architectural qualities of a building. As the final element of a project, the fencing offers the opportunity to create a striking first impression which completes the overall vision.

Architects: HOK and PLP Architecture
NBBJ and Ryder Architects
Main Contractor: Laing O'Rourke

Categories: Grating Fences
Products: Roma-4 and Palermo
Projects: Francis Crick Institute
Dumfries & Galloway Royal Infirmary





Francis Crick Institute

A Roma-4 fence was specified for this prestigious new building. The fence was customised, setting the grating panels horizontally so that the mesh mirrored the rectangular features of the glazed façade on the south and north elevations. In addition, tubular posts were chosen and extended at intervals to provide street lighting.

Matching Infill panels were also supplied to external balustrades surrounding ventilation and emergency access areas, as well as a similar styled bi-folding stainless steel gate to the West entrance of Dangoor Walk.

Dumfries & Galloway Royal Infirmary

A Lang+Fulton fence was installed to mirror the detailing of the wall cladding. The bespoke Palermo grating fence was supplied with decorative feature posts and framing bars in a contrasting paint finish to replicate the geometry and pattern of the pre-cast concrete panels which were used to clad the building.

Louvred compounds and fencing made from 2200mm-high Italia-100 were also supplied to provide security and visual screening at several areas: to surround the generator plant, to secure two oxygen storage sites, to enclose a service area and to screen the mortuary entrance.

Related Projects

Rokeby School, Newham

Product: Novara-25
High security anti-climb fencing



Rochester Station

Product: Torino-33
Engineered as a barrier fence



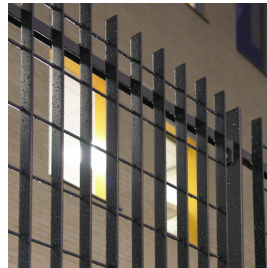
RNLI HQ, Poole

Product: Roma-3
Bowed-top and wave-top fencing



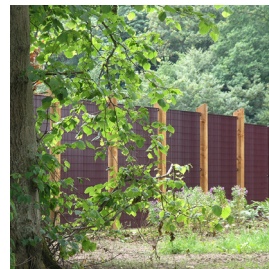
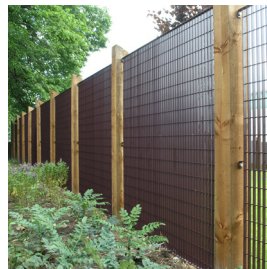
Prendergast Vale College, Lewisham

Product: Roma-4
Customised secure design



Toronto Primary School, Howden

Product: Novara-34
Anti-climb fence with rustic timber posts



Manor Park,

Product: Stereo-3
Radiused panels between brick piers



LANGFULTON

Newbridge Industrial Estate, Newbridge, Edinburgh EH28 8PJ
t: 0131 441 1255 sales@langandfulton.co.uk www.langandfulton.co.uk