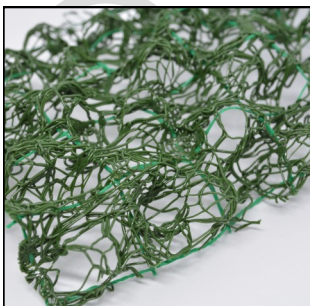


MACMAT[®] R1 020
POLYMERIC REINFORCED GEOMAT

MacMat[®] R is a reinforced geomat made from a polymeric three-dimensional matrix having biconical cusped shape that is extruded onto a woven geogrid consisting of high tenacity polyester yarns with a polymeric protective coating.

MacMat [®] R			R1 020
Geomat properties			
Polymer			Polypropylene
Mass per unit area ⁽¹⁾	EN ISO 9864	g/m ²	400 (± 30)
Melting point ⁽²⁾	ISO 11357-3	°C	160
Density ⁽²⁾	ISO 1183	kg/m ³	900
UV resistance ⁽³⁾			Stabilized
Reinforcement properties			
Type			Woven high tenacity polyester geogrid protected by a polymeric coating
Tensile strength T _{ch} - MD ^(3,4,5)	EN ISO 10319	kN/m	20
Strain at T _{ch} - MD ⁽⁶⁾	EN ISO 10319	%	11.5 (± 3.5)
Mesh opening size - MD ⁽¹⁾		mm	35 (± 15)
Mesh opening size - CMD ⁽¹⁾		mm	30 (± 10)
Composite Physical Properties			
Mass per unit area ⁽¹⁾	EN ISO 9864	g/m ²	480 (± 100)
Voids index ⁽¹⁾		%	> 90
Thickness at 2 kPa ⁽⁷⁾	EN ISO 9863-1	mm	15 (± 2)
Roll width ⁽⁸⁾		m	4.35
Roll length ⁽⁸⁾		m	40
Composite Erosion Control Properties			
Light Penetration (passing)	ASTM D6567	%	35 - 45
Ground Coverage		%	55 - 65
C factor (cover management factor) ⁽⁹⁾ : - rainfall intensity i = 50 mm/h - rainfall intensity i = 100 mm/h - rainfall intensity i = 150 mm/h	ASTM D6459		≤ 0.0155 ≤ 0.032 ≤ 0.043
Durability, Environmental and Sustainability Properties			
Content of SVHC ⁽¹⁰⁾	ISO 14025 EN 15804	%	≤ 0.1
Global Warming Potential Total (GWP) ⁽¹⁰⁾		kg CO ₂ Eq.	≤ 1.26E+00
Acidification potential (AP) ⁽¹⁰⁾		mol H ⁺ Eq.	≤ 3.04E-03
Eutrophication Potential freshwater (EP-fr) ⁽¹⁰⁾		kg P Eq.	≤ 3.42E-06
Eutrophication Potential marine (EP-mar) ⁽¹⁰⁾		kg N Eq.	≤ 1.07E-03
Eutrophication Potential terrestrial (EP-ter) ⁽¹⁰⁾	mol N Eq.	≤ 1.17E-02	
Durability	Annex B - h EN	To be covered within 14 days after installation. Predicted to be durable for a minimum of 100 years in natural soils with 4<pH<9 and soil temperature <25°C	



- (1) Nominal value, where no specific tolerance is indicated a standard of 10% is admissible;
- (2) Informative value given at the best of our knowledge;
- (3) The mechanical performances reported are those of the reinforcement grid of the composite before the assembly process and should not alter the basic properties. Please verify that during the testing operation the geocomposite is properly locked to the testing jaws in order to avoid sliding phenomena or mechanical damage to the reinforcement element itself. Furthermore, check that the geocomposite has been properly pre-tensioned in order to recover any geometrical deformations of the reinforcement grid that may have occurred during the manufacturing process of the composite;
- (4) Short-term tests in accordance with EN ISO 10319:2015. The values given correspond to Minimum Average Value at 95% confidence limit to establish the characteristic short-term tensile strength (T_{ch}) in accordance with EN 13251:2016 and calculated as the mean value of ultimate strength deducting the tolerance;
- (5) Intermediate mechanical resistances of the composite are available on request. All other characteristics of these intermediate geocomposite grades are the same as those reported in the data sheet, with the exception of the weight as this value is directly dependent on the weight of the geogrid reinforcement;
- (6) Typical value;
- (7) Typical value, however the geocomposite thickness can vary according to specific project requirements ranging from 8 to 22 mm approx.;
- (8) Standard dimensions; other dimensions available on request - check feasibility with your local Maccaferri branch. A standard tolerance of 2% is admissible with reference to the declared value;
- (9) Calculated values certified by a CPESC (certified professional soil erosion & sediment control specialist) based on full scale test reports 732 and 734 run according to ASTM D6459 - Standard Test Method for Determination of Erosion Control Blanket (ECB) Performance in Protecting Hillslopes from Rainfall-Induced Erosion;
- (10) Values reported in the EPD certificate KIWA-EE- 000379-EN issued in accordance with EN15804+A2: 2019 and ISO14025 with validity till April 2029. The reported values are selected among the 13 mandatory certified values (EN 15804+A2:2019) and referred to the Product Stage A1-A3. Additional environmental impact indicators and different Product Stages valid for Life Cycle Assessment are reported in the full EPD certificate of the product.



MD: Machine Direction; CMD: Cross Machine Direction



For the optimisation and improvement process of the technical characteristics of the products, the producer reserves the right to modify standards and characteristics of the product without warning. The information contained herein is to the best of our knowledge accurate, but since the circumstances and conditions in which it may be used are beyond our control, we do not accept any liability for any loss or damage, however arising, which results directly or indirectly from the use of such information nor do we offer any warranty or immunity against patent infringement. Specifiers are requested to check the validity of the specification they are using.

Maccaferri Ltd: T: (+44) 1865 770555 www.maccaferri.com/uk	Specialist areas: Sales: E: sales.uk@maccaferri.com Technical: E: technical.uk@maccaferri.com Construction: E: construction.uk@maccaferri.com	
Rep of Ireland: T: (+353) 18851662 www.geostrong.net		