



Product Sheet

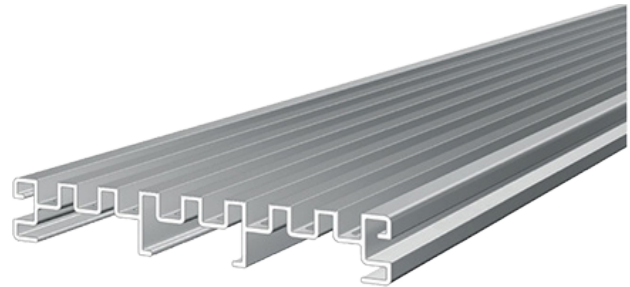
ALUgrate Drainage Grille

ALUgrate is a specialised edging product engineered to direct rainwater down on to your weatherproofing or insulation layer, and away from façade, protecting glazing, masonry and other materials from splash-back.

Made from aluminium, ALUgrate can be used on all external raised floor projects, including those that require maximum fire safety.

CHARACTERISTICS:

Length: 4000mm
Width: 140mm
Height: 21mm
Weight: 6.6kg per length
Fire-rating: Class A1

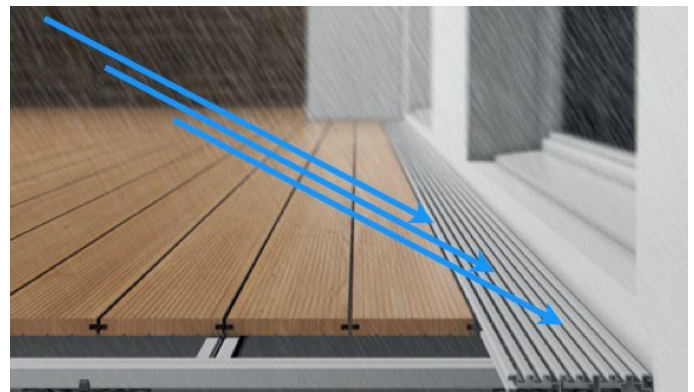
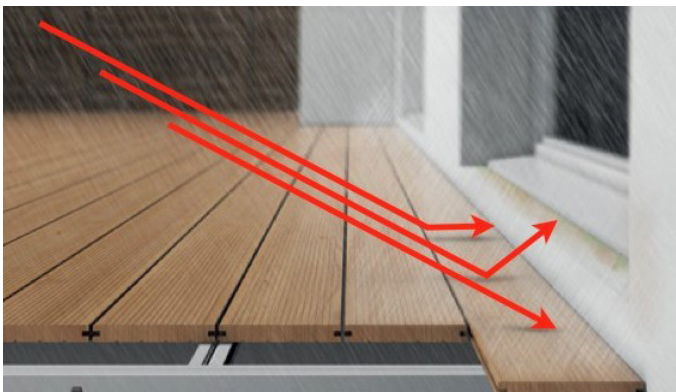


MATERIAL:

Aluminium
Designed and Manufactured in Europe

APPLICATIONS:

ALUgrate can be used for a wide range of outdoor applications and finishes, including 20mm external porcelain and timber decking. The grille connects to rail systems such as ALURail, A-PED-JOISTS or timber joists, either directly or through using a connector.



Contact us if you require further technical support or advice

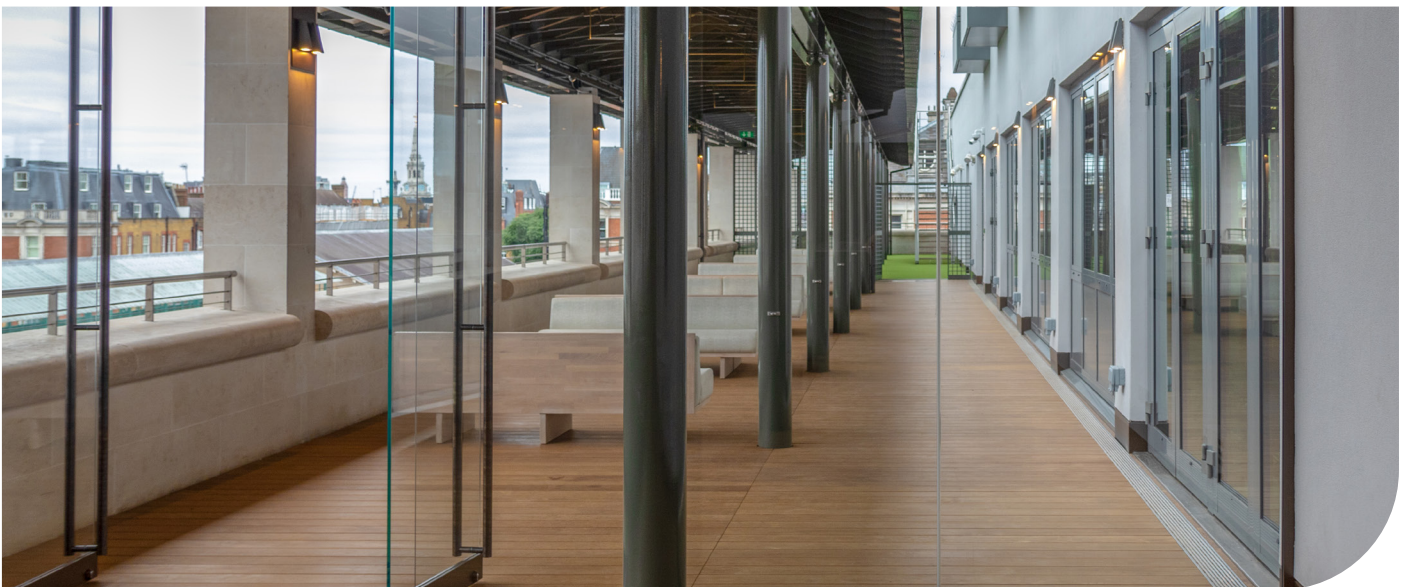
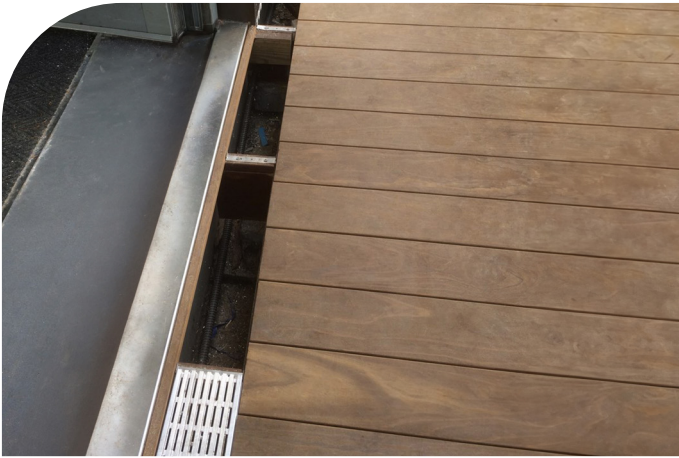
info@buzonuk.com - buzonuk.com - +44 (0)20 8614 0874

The Royal Opera House London

A hidden gem at the top of the Royal Opera House, the Piazza Terrace is a roof top bar with views of Covent Garden.

Originally a rest area for staff, the space was re-imagined in 2018 by Stanton Williams and Buzon UK were contracted to replace the existing deck with a 600 sqm hidden-fix decking system featuring Kebony boards.

The internal space is separated from the deck by a long stretch of glass doors and ALUgrate has been used along its length to reduce splash-back.



Contact us if you require further technical support or advice

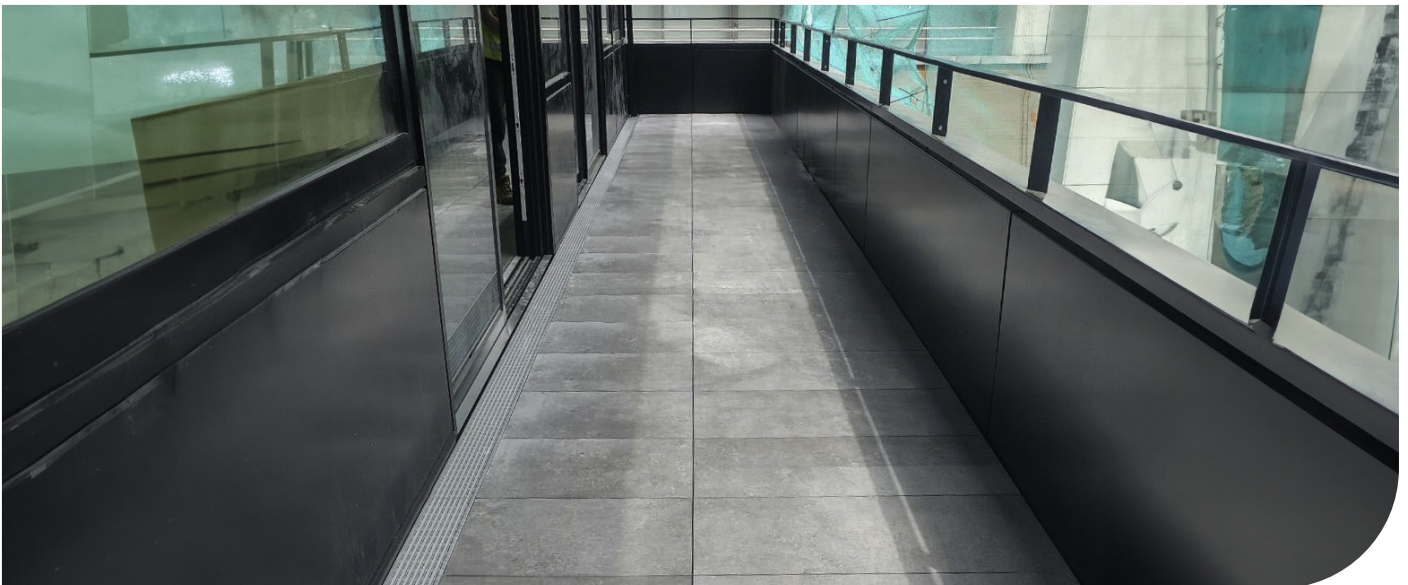
info@buzonuk.com - buzonuk.com - +44 (0)20 8614 0874

One Portwall Square Bristol

Located in the heart of Bristol's commercial district, One Portwall Square is an award-winning new office development.

With staff wellbeing at the heart of the scheme, each floor has a large terrace providing easily accessible outdoor space.

Buzon UK were contracted to install 20mm porcelain tiles on DPH pedestals and the ALUrail system. ALUgrate was used along the length of the terraces to protect the façade from splash-back.



Contact us if you require further technical support or advice

info@buzonuk.com - buzonuk.com - +44 (0)20 8614 0874