

CLD Rampart 50

Multi-threat Security Fence to LPS 1175 A1, B3, C5, D10 (SR1, SR2, SR3 & SR4) Issue 8 and HVM to IWA 14-1:2013



Find out more
Scan for more information

Description

CLD Securus Rampart 50 takes multi-threat protection to a new level for data centres and high risk sites, offering a high security fence system combined with a shallow foundation hostile vehicle mitigation. Securus Rampart 50 has been tested to IWA 14-1:2013 – can stop a 7.5 tonne vehicle moving at 50 miles per hour (80 kilometres per hour). Can be used with either of CLD's LPS 1175 security rated Securus fence panels, meaning the system also offers protection against attack manual attacks or climbing.

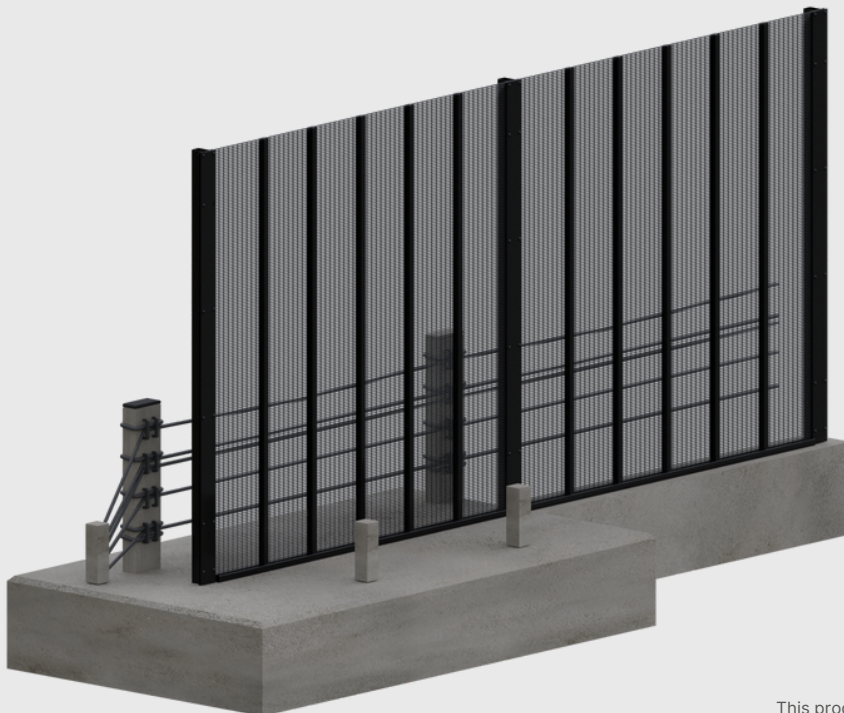
Features

Ideal for: Data Centres,
Police and military,
Government, Nuclear sites

Black high density coating
available

Short and long runs – no special
posts or fitting needed for
corners or direction changes

Only 400mm foundation and
small footprint size.



Exploded view of post and fixing details for the CLD Rampart 50
This product has additional features not demonstrated for security reasons



CLD Rampart 50

Multi-threat Security Fence to LPS 1175 A1, B3, C5, D10 (SR1, SR2, SR3 & SR4) Issue 8 and HVM to IWA 14-1:2013



Product Technical Information

Standard	LPS (1175 SR1, SR2, SR3 or SR4) Issue 8 IWA 14-1:2013 V/7200(N3C)/80/90:8.5 Secured By Design
Fence Type	Shallow foundation hostile vehicle mitigation system for use with CLD Securus S1, S2, S3 or S4 panels. See separate specification sheets for mesh fence panels
Post Height	HVM: 1370mm from finished floor level
Main post width	200mm
Post depth	400mm
Tolerance	+/- 10mm
Concrete specification	C40/50
Slings Length	Rope Slings: 10500mm standard, bespoke available Anchor Slings: 1000mm standard
Rope quantity	5
Rope diameter	22mm galvanised or 22.15mm coated
Rope finish	Galvanised or Black high-density polyethylene (HDPE) coating
Fence finish	Polyester powder-coated to 60-80 microns or 160-200 microns with marine grade and metallics. Any RAL colour available
End foundations	12200mm long x 2000mm wide x 400mm depth
Intermediate foundations	1000mm long x 1000mm wide x 400mm depth
Line Support foundations	200 x 200 x 400mm
Warranty	Minimum of 15 years against manufacturing defects

System Details



Disclaimer

Fencing should be installed in accordance with BS 1722-14. Every care has been taken to ensure that all information provided on this data sheet is accurate. CLD Fencing Systems Ltd reserves the right to change product specification at any time. Please ensure that you have the latest information which can be found on our website or by contacting our team.

Document Reference - CLD_Rampart_50_DS_20230316