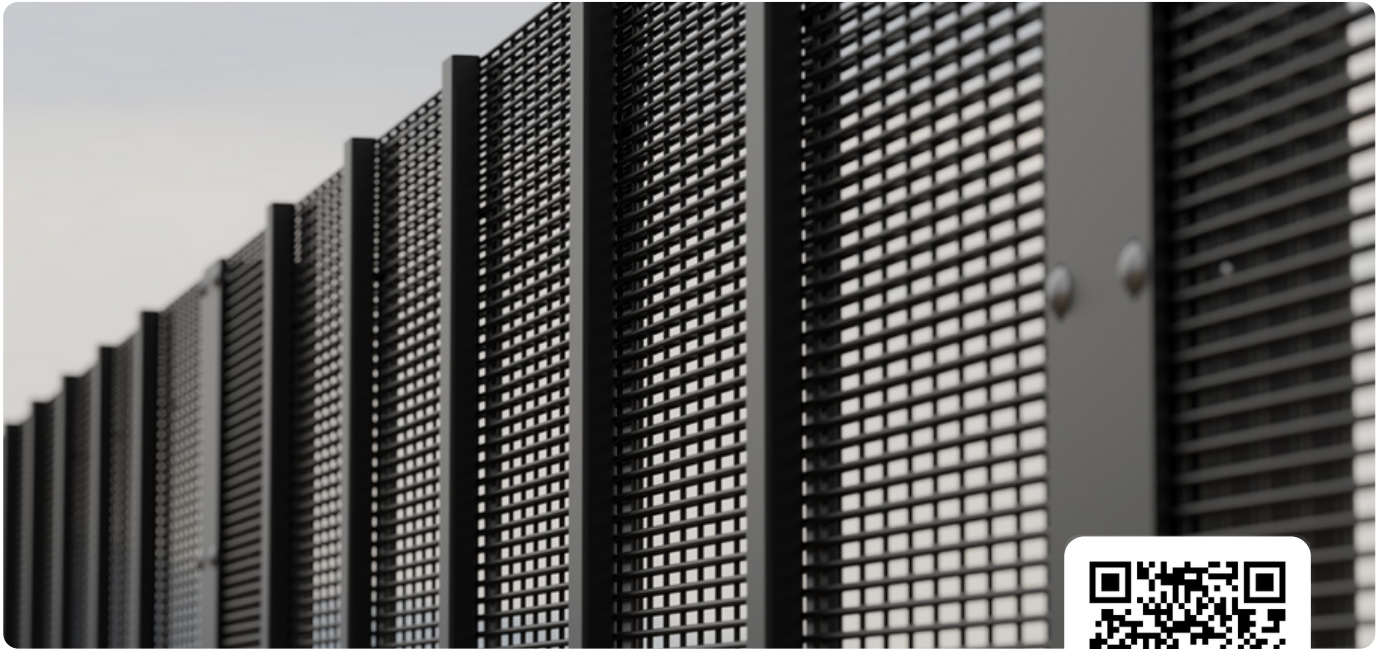


# CLD ModSec Securus S2

Mesh and double wire flat panel system



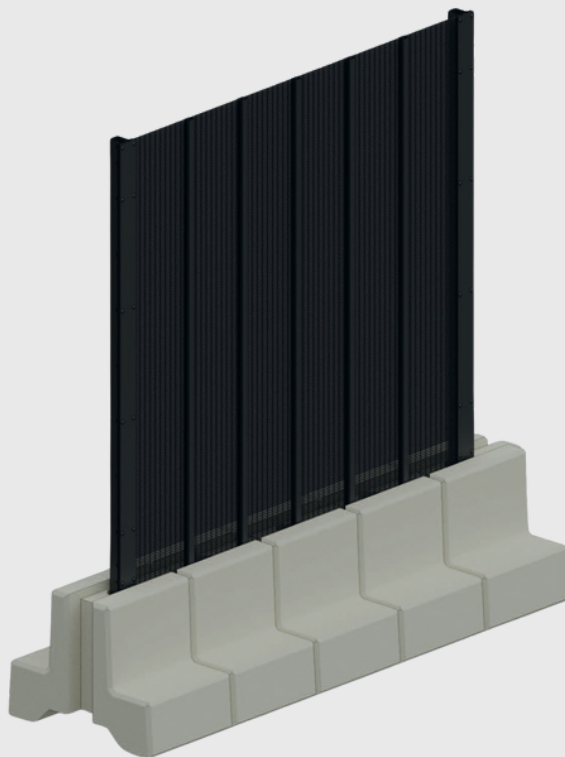
Physical Security Systems



Find out more  
Scan for more information

## Description

CLD ModSec is an innovative installation system which can be installed either at ground level or as a trench system. It features an in-built channel for wires or services enabling easy installation of CCTV, PIDS or other electronic devices. Modsec S2 incorporates CLD Securus S2 fence panels. Tested by the Loss Prevention Certification Board (LPCB), Securus S2 offers a minimum delay against attack of 3 minutes.



## Features

Construction of sensitive, high security sites; Data Centre, Police, Utilities, MoD and Government

Built in services channel

Easily updated as threat level changes

Hire or purchase

Exploded view of post and fixing details for the CLD ModSec Securus S2  
This product has additional features not demonstrated for security reasons



cld-systems.com

# CLD ModSec Securus S2

Mesh and double wire flat panel system



Physical  
Security  
Systems

## Product Technical Information

Standard	LPS 1175 BS1722-14:2017 BS EN ISO 141:2009 BS EN 13438:2013 Secured By Design
Panel Type	Mesh and wire. Double layered mesh cassette system. High aluminium content. (Note: Fence Cassettes are supplied assembled for ease of install, mechanical lifting required – can be supplied unassembled)
Panel Width	2520mm
Wire diameter	4mm
Mesh size	76.2 x 12.5mm
Available heights	2440mm to 5000mm
Nominal Heights	2.4m to 5.0m
Finish	Polyester powder-coated to 60-80 microns or 160-200 microns with marine grade and metallics. Any RAL colour available
Panel Installation	Bottom of panel maximum 50mm above block
Security Topping Options	Barbed and razor wire, cranked and straight
Post Dimensions	80mm x 60mm
Post Centres	2533mm +/-15mm
Posts	Special flanged post, galvanised after manufacture and polyester powder-coated to match fencing
Fixings	120mm x 6mm full length clamp bar. M8 Stainless Steel cup square bolt (min 30mm)
Foundations	Install Modsec foundation on suitable flat ground making sure blocks interlock and posts are installed in every fourth block. Set post into block with suitable compound depending on permanent or temporary installation.
Warranty	Minimum of 15 years against manufacturing defects.

## System Details



## Disclaimer

Fencing should be installed in accordance with BS 1722-14. Every care has been taken to ensure that all information provided on this data sheet is accurate. CLD Fencing Systems Ltd reserves the right to change product specification at any time. Please ensure that you have the latest information which can be found on our website or by contacting our team.

Document Reference - CLD\_ModSec\_Securus\_S2\_DS\_20230223