

CLD FibreFence Railings

GRP fibreglass non conductive railing system



Find out more
Scan for more information

Description

CLD FibreFence GRP railing system is built by using GRP pultruded profiles which are then assembled to create self-standing, modular panels, that offer the best solution to combine high mechanical resistance and efficient protection with radio-transparency and frangibility requirements in compliance with ICAO prescriptions.

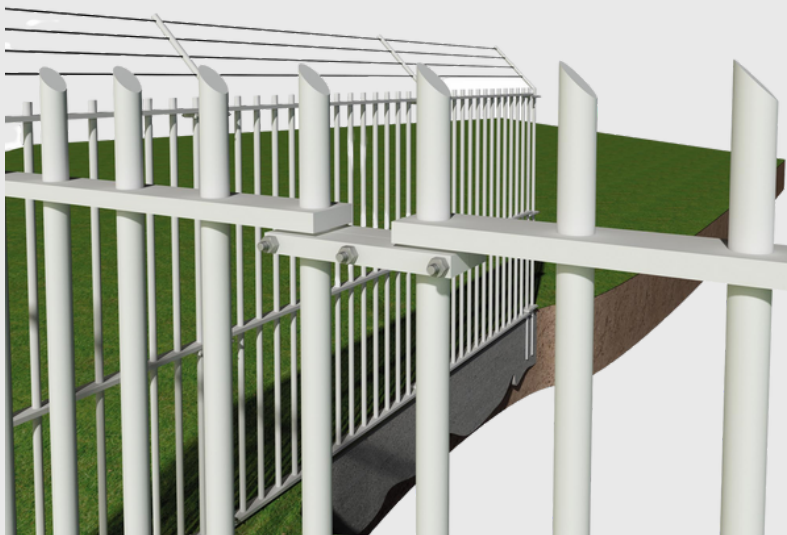
Features

Radio transparent

Frangible

No visual interference

Wildlife intrusion control



Exploded view of post and fixing details for the CLD FibreFence railings.
This product has additional features not demonstrated for security reasons



cld-systems.com

CLD FibreFence Railings

GRP fibreglass non conductive railing system

Product Technical Information

Standard	ICAO Aerodrome Design Manual, Part 6, 1st ed. 2006
Panel type/options	GRP self-standing pultruded modular profiles, designed with radio-transparency, meets frangiibility requirements, clear span ratio to protect jet-bast
Panel width	2300mm
Wire diameter	Vertical bar: 50.8 diameter x 5mm wall thickness
Mesh Size	Bar spacing: approx 150mm between verticals
Height	1000mm to 2500mm
Nominal Height	1.0 to 2.5m
Finish	Green RAL colour 6010
Top Edge projection	Vertical pertrusions
Topping Options	Vertical rods accessorised with arms to support plastic, barbed or concertina wires
Panel Installation	Fast installation, bottom of panel approx 40mm above ground
Posts	CHS GRP Posts
Post Dimensions	50.8 diameter, 5mm wall thickness
Post Centres	2500mm
Fixings	85 x 25 mm connection brackets with stainless steel rivets, bolts and nuts
Foundations	Set posts in holes minimum 300mm diameter x 800mm deep. Note: Contractor/client is responsible for the foundation size suitable for the ground conditions and fence height.
Warranty	Minimum of 12 months against manufacturing defects

System Details



Disclaimer

Fencing should be installed in accordance with BS 1722-14. Every care has been taken to ensure that all information provided on this data sheet is accurate. CLD Fencing Systems Ltd reserves the right to change product specification at any time. Please ensure that you have the latest information which can be found on our website or by contacting our team.

Document Reference - CLD_FibreFence_Railings_DS_20240215