

SWINGPLAY

PENDULUM SWING c/w BASKET SEAT

PROD CODE: Ground fix	6040-060
SIZE:	4050 x 3300 x 3110
AGE RANGE:	8-12 YEARS
FREE FALL HEIGHT:	1700 mm
FREE SPACE:	1000 mm (FROM EDGE OF SAFETY SURFACING)
WEIGHT OF HEAVIEST PART	175 kg
OVERALL WEIGHT OF UNIT	345 kg

DELIVERY LIST

Part No.	Description	Qty
5083-017	Beam Assembly	2
5084-020	Dia. 950 Basket Swing Seat	1
3092-045	Beam Support Leg	2
3200-518	Pendulum Swing Beam Fixing Plate – Top	1
4064-011	Pendulum Swing Beam Fixing Plate – Bottom	1
4200-881	Support Strut	1
4201-199	Universal Joint and Bearing Assembly	1
4061-091	Chain Assembly	4
-	Fixings pack	1

SPECIFICATION

Cantilever Beam: Manufactured from 200 x 100 RHS to BS4848 Part 2
 Support Legs: Manufactured from 50 x 50 RHS to BS4848 Part 2
 Fasteners: Non-standard type (anti vandal) and plated for weather protection.
 Welds: Copper free wire conforming to BS EN 440 (1995).

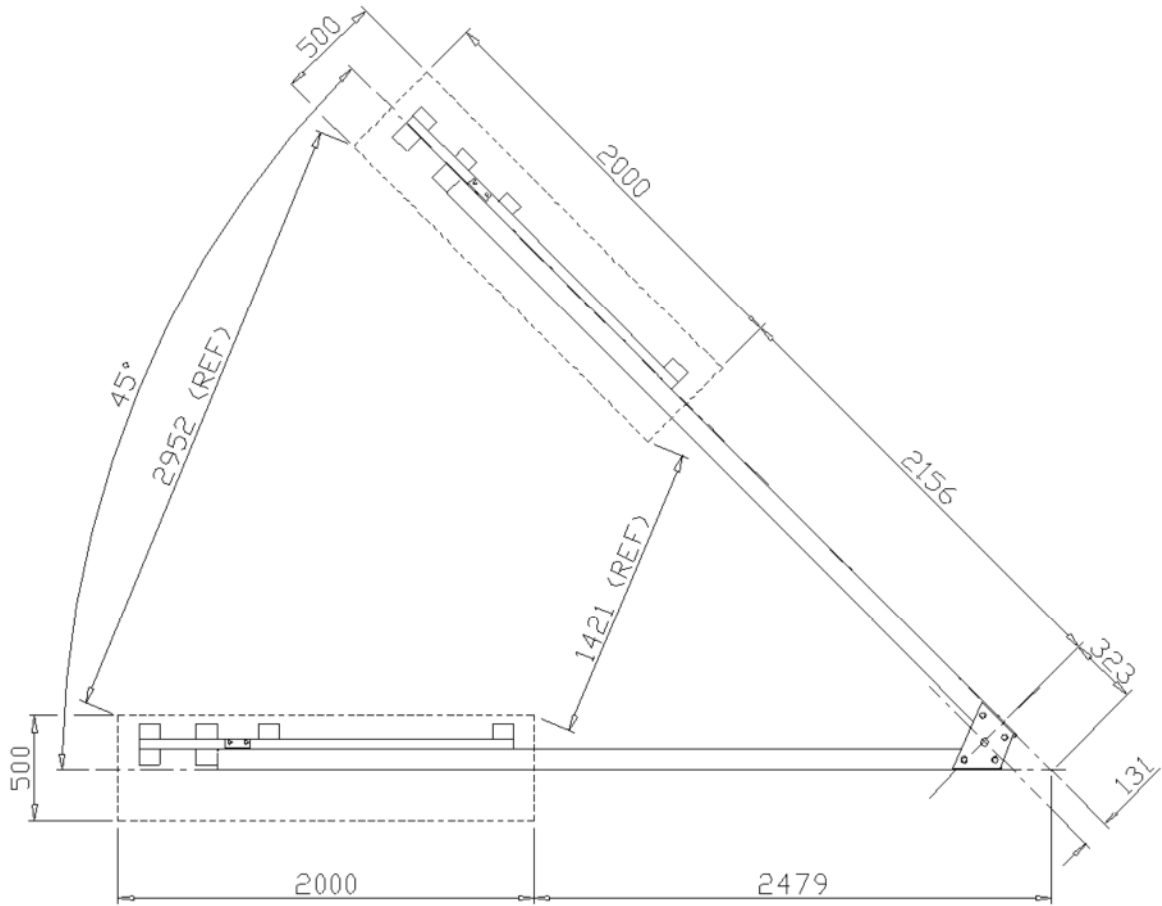
INSTALLATION INSTRUCTIONS

THIS ITEM IS HEAVY AND WILL REQUIRE LIFTING AIDS

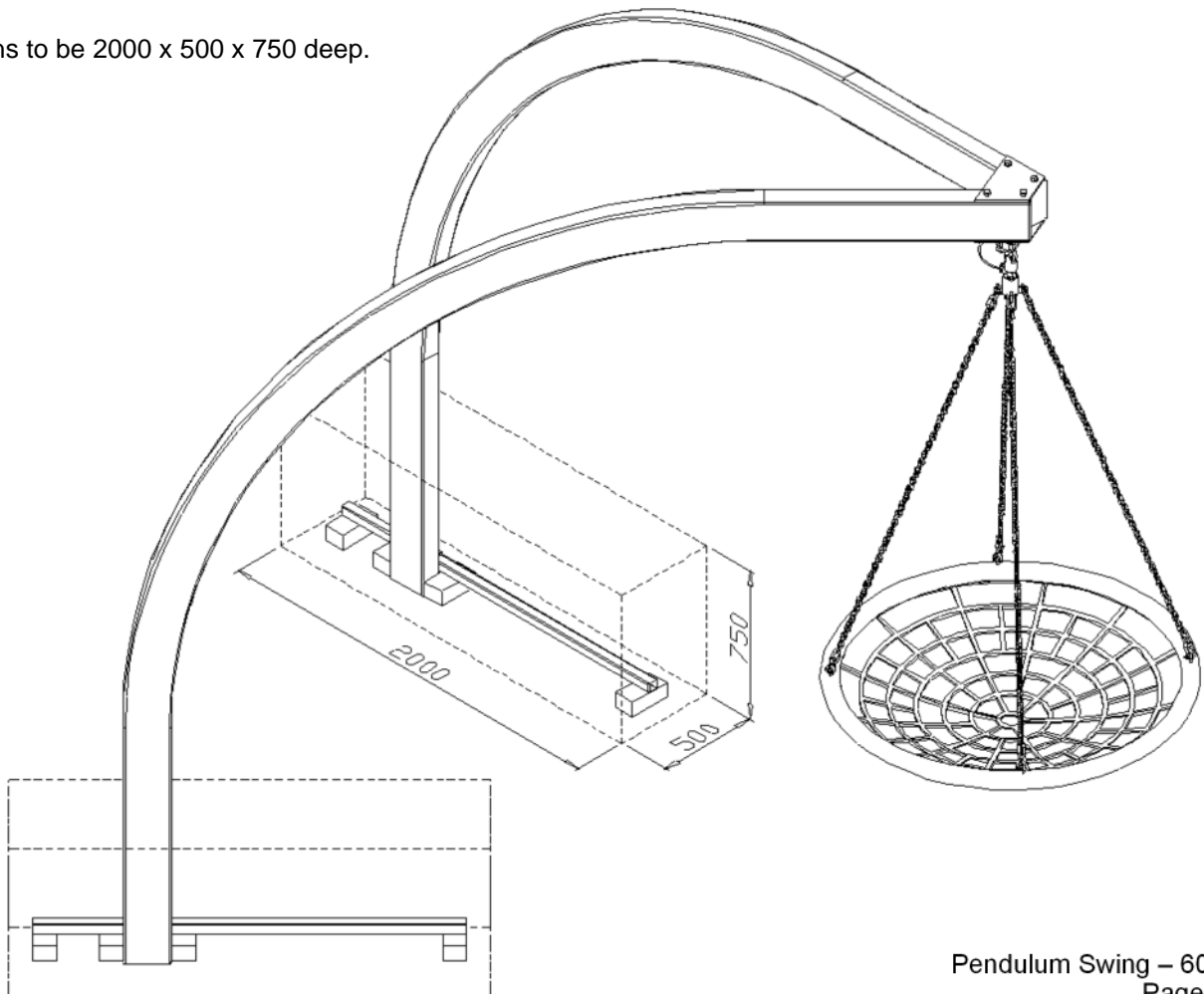
- 1 Read installation instructions thoroughly before erecting the unit.
- 2 Do not attempt to assemble incorrect or damaged components. Contact supplier immediately.
- 3 Do not tighten fastenings until all components are in position, unless otherwise stated.
- 4 Mark out and excavate foundations in accordance with foundation detail.
- 5 Lay both pendulum swing beams (A) into foundations (they are not handed).
- 6 Fix pendulum swing beam top and bottom fixing plates (D & E) to pendulum swing beams using drilled M16 x 250 hex head bolts (F), M16 washers (K) and M16 castle nuts (L). It may prove easiest to bolt the top and bottom fixing plate to one of the swing beams first (not fully tightened) and then to the other swing beam. The pendulum swing beams will require extra support during this process.
- 7 Hoist the pendulum swing beams upright from the apex with a block and tackle. Check pendulum swing beams are plumb and square at top and bottom and that height from ground level to underside of top of pendulum swing beams is 2900mm. Also ensure that pendulum swing beams are correctly sited in the foundations.
- 8 Fix support strut (N) to pendulum swing beam bottom fixing plate with M16 x 40 hex socket cap head screws (H) and M16 single coil washers (J). For further security also rawl bolt support strut to ground if possible.
- 9 Release block and tackle from the apex of pendulum swing beams.
- 10 Make further check that pendulum swing beams are plumb and square at top and bottom and that height from ground level to underside of top of pendulum swing beams is 2900mm. Make any final adjustments if required and check tightness of M16 x 250 bolts.
- 11 Backfill foundations with concrete. Concrete to be 4 parts gravel, 2 parts sand and 1 part cement. If bark fixing, then foundations will require support to raise concrete to desired level. See foundation details.
- 12 Once foundations have set (at least 48hrs) detach and remove support strut (retain bolts). Attach universal joint and bearing assembly (P) to bottom swing beam fixing plate (E) using M16 x 40 hex socket cap head screws (H) and M16 single coil washers (J).
- 13 Drill/ream through plastic bush on basket swing seat (B) with 10mm size drill.
- 14 Attach basket swing seat (B) to four chain assemblies (R) using shackle and pin (S) lock in place with 1/8" x 5/8" spiro pin (T). Attach top end of chains to universal joint in the same way. Do not attach swing assembly until foundations have set, as premature use may cause displacement of beam assembly and subsequent weakening of the foundations.
- 15 Check tightness of all bolts.
- 16 Fit 1/8" x 7/8" sellock pin (M) through turret of castle nut and through drilled hole in M16 x 250 bolt (F).
- 17 Fit M16 nut cover over castle nuts.
- 18 Paint Beam Assemblies
- 19 The unit is ready for use when paint is dry.

FOUNDATION DETAIL

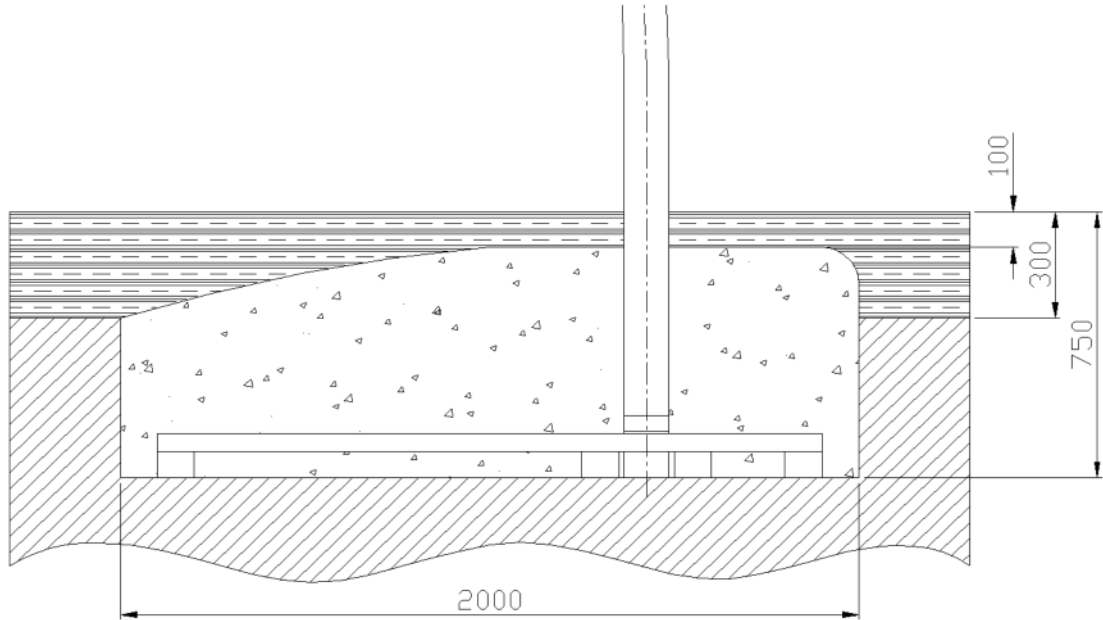
Note: Care must be taken under abnormal conditions to ensure sufficient foundation depth is available



Foundations to be 2000 x 500 x 750 deep.

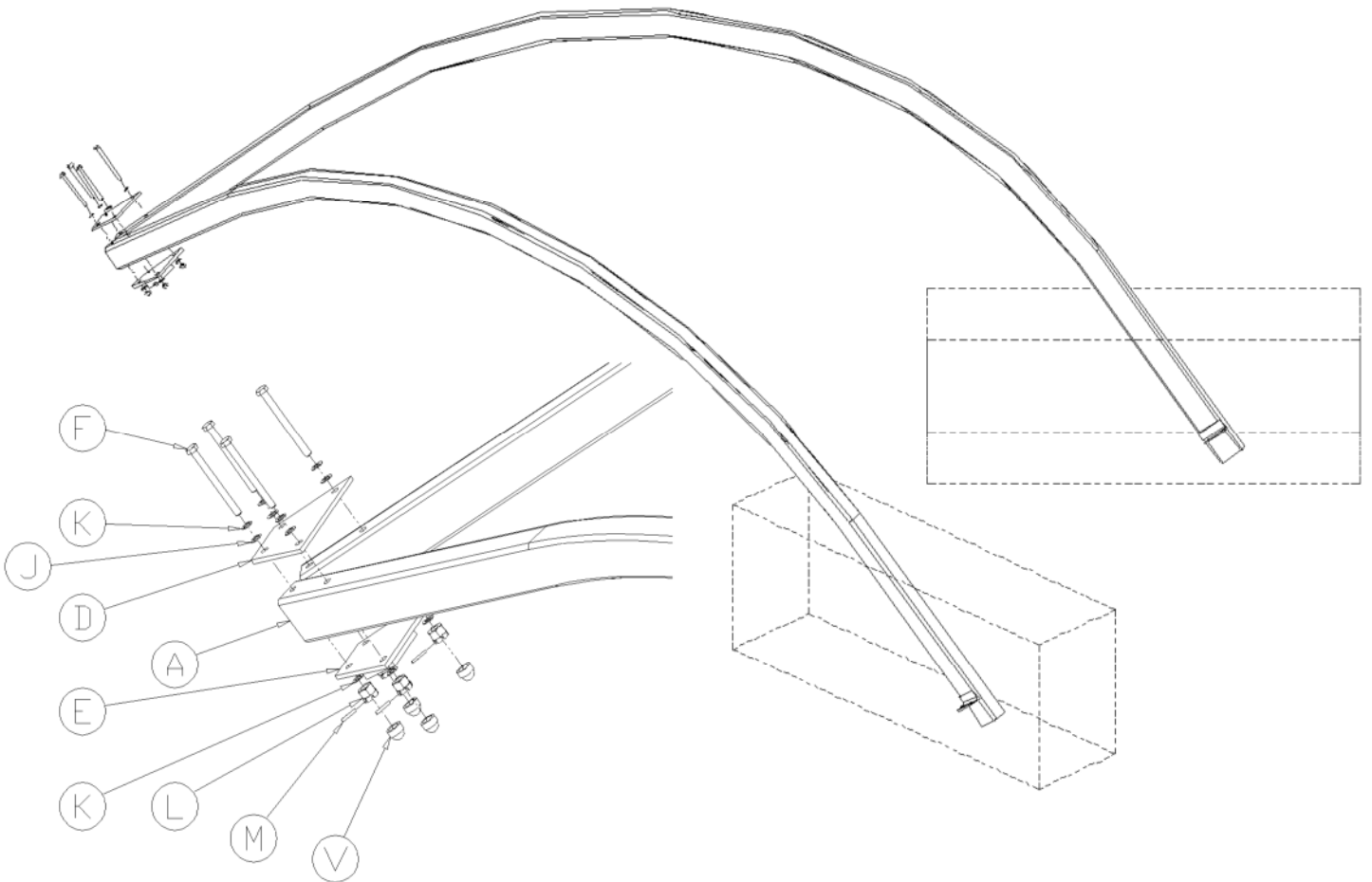


BARK FOUNDATION DETAIL



ASSEMBLY DETAIL

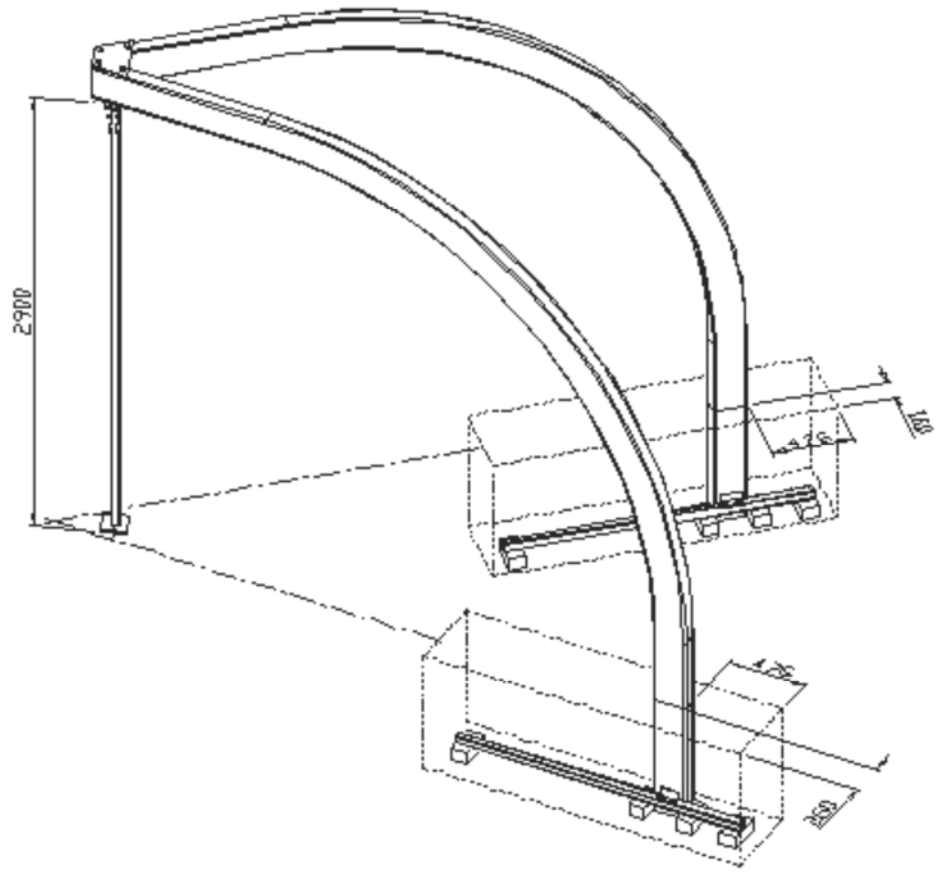
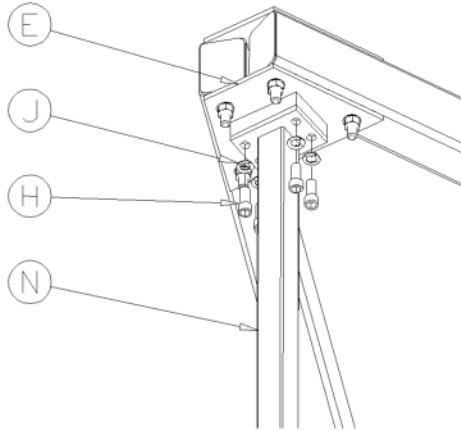
Pendulum Swing Beam to Top and Bottom Fixing Plates



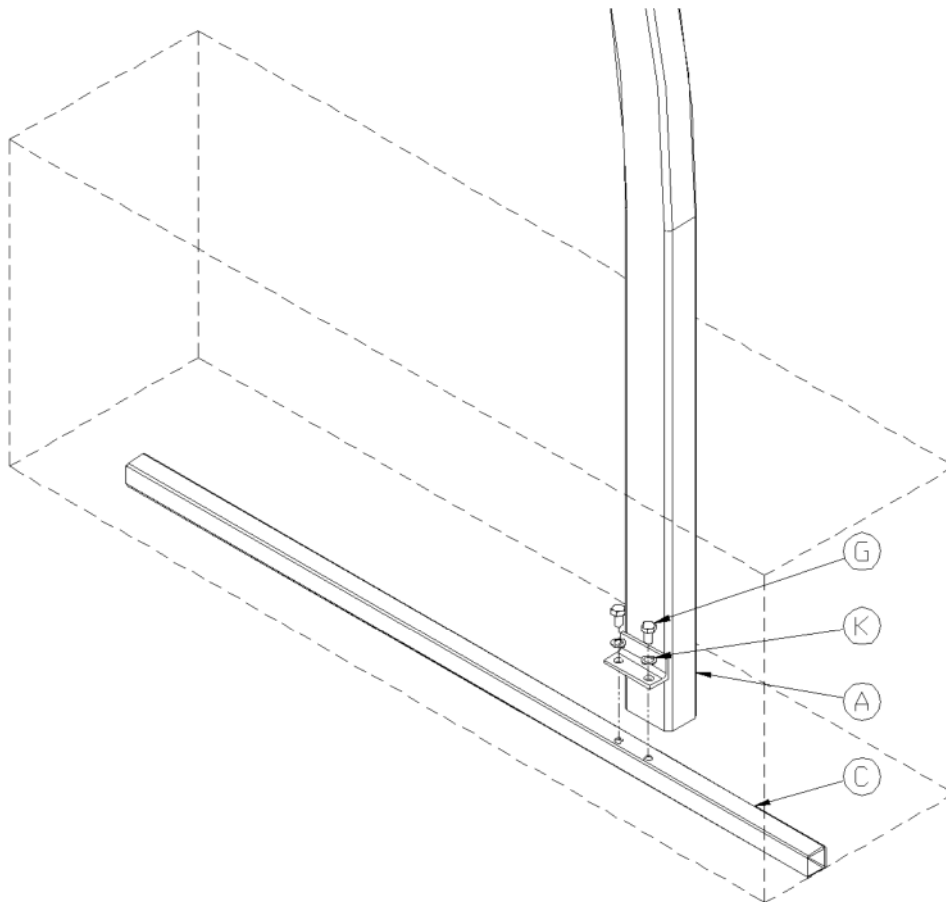
Pendulum Swing Beam Positioning and Height

Note: Cantilever beams are not positioned centrally in foundations

Support Strut Fixing

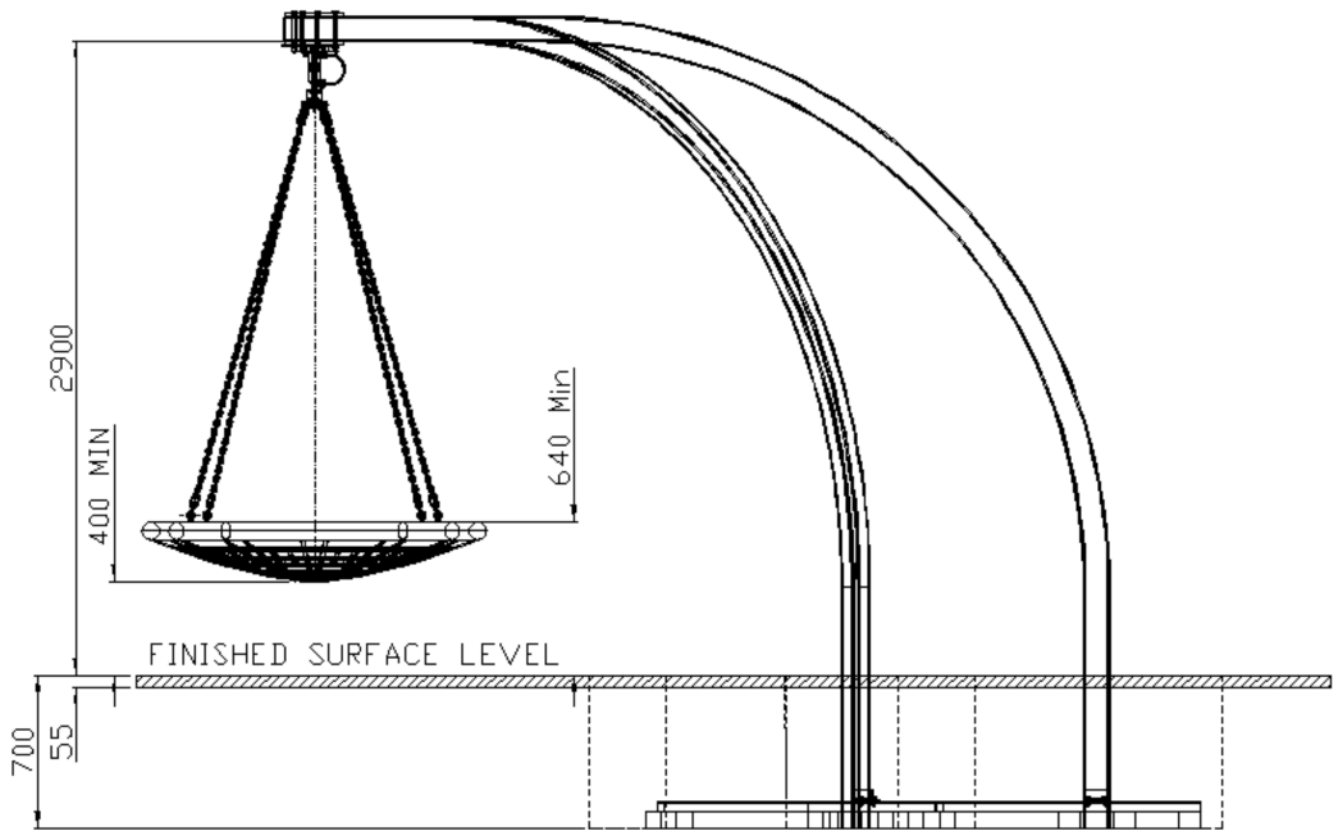


Beam Support Leg to Pendulum Swing Beam Fixing

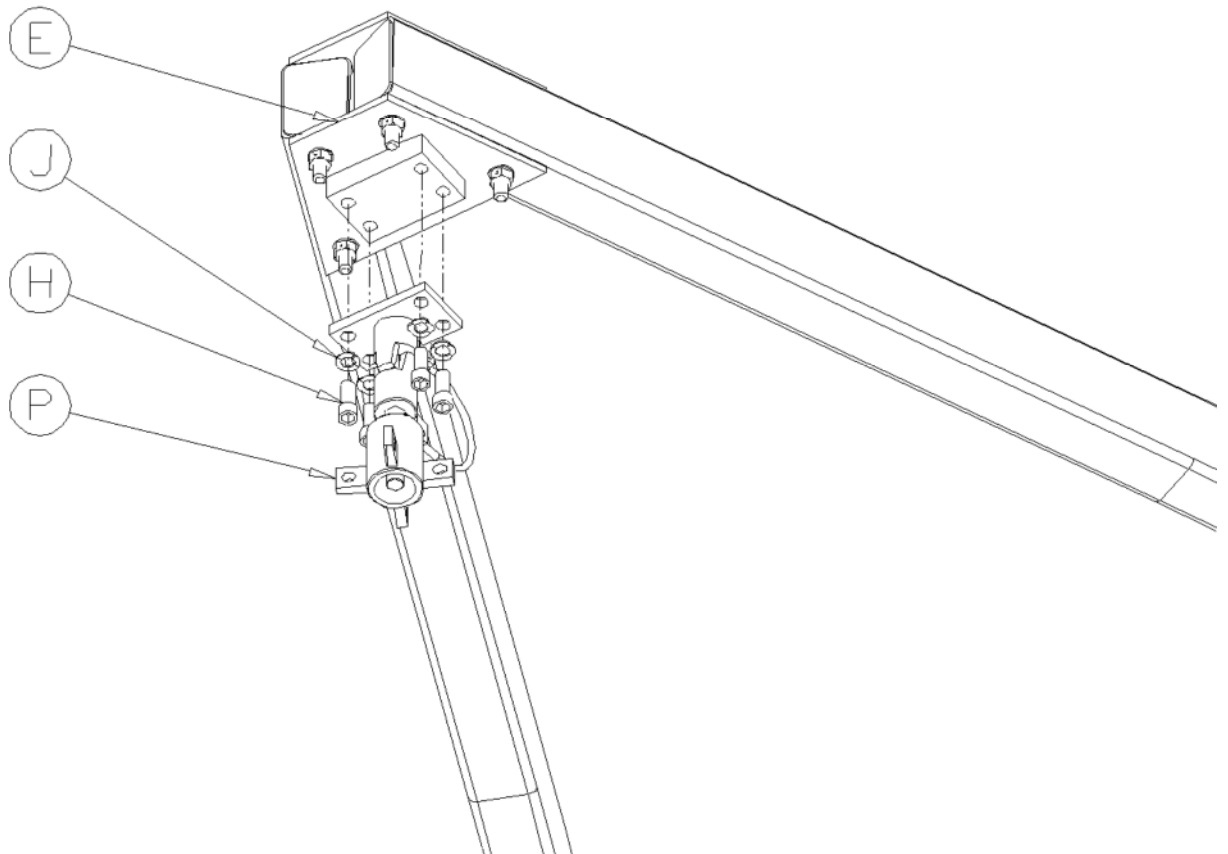


Beam and Seat Height Setting

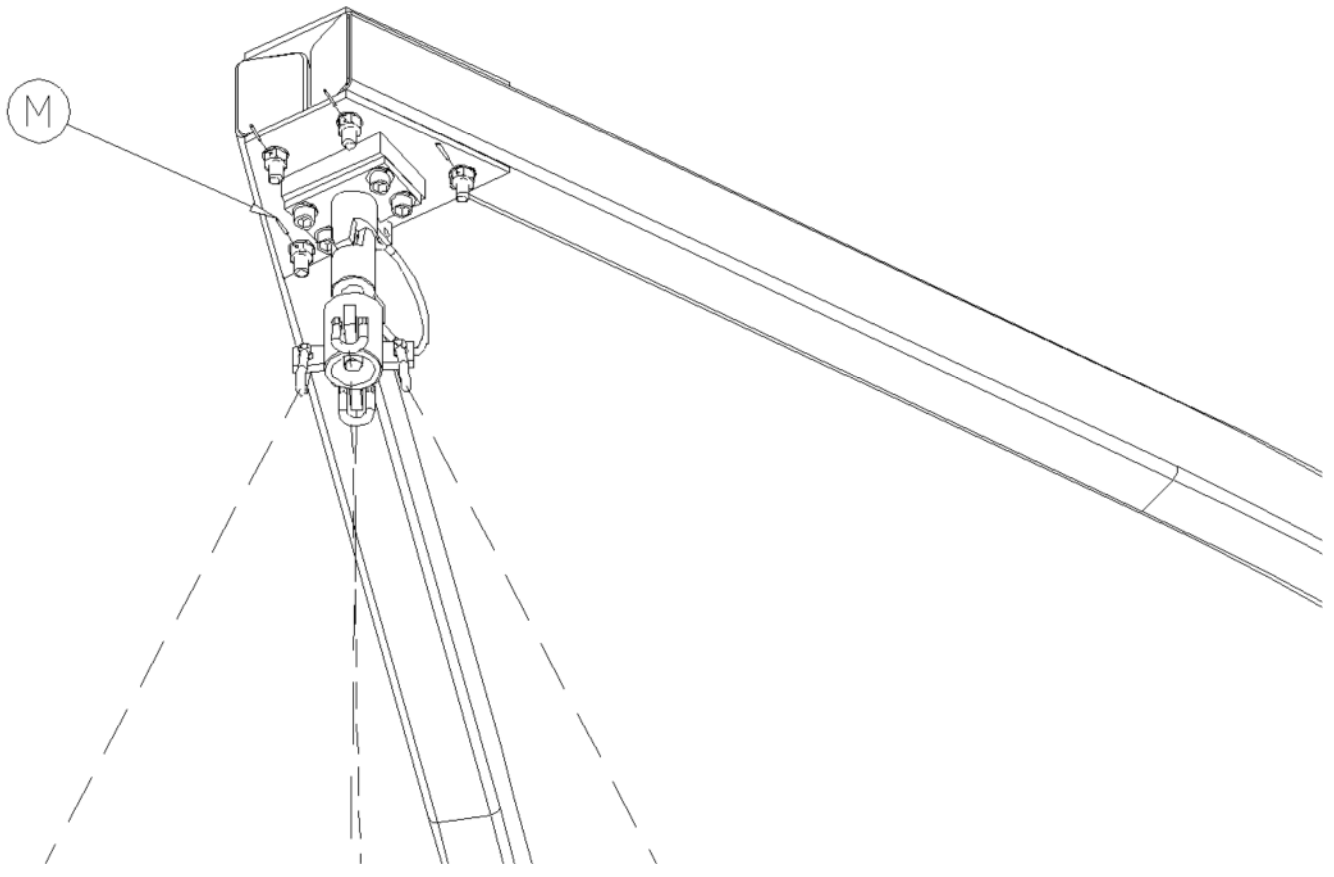
Minimum Dimension For Seat Height Relates To Overall Finished Length Of Safety Surfacing.
If Seat Height Is To Be Set Any Lower Please Contact Wicksted Playscapes



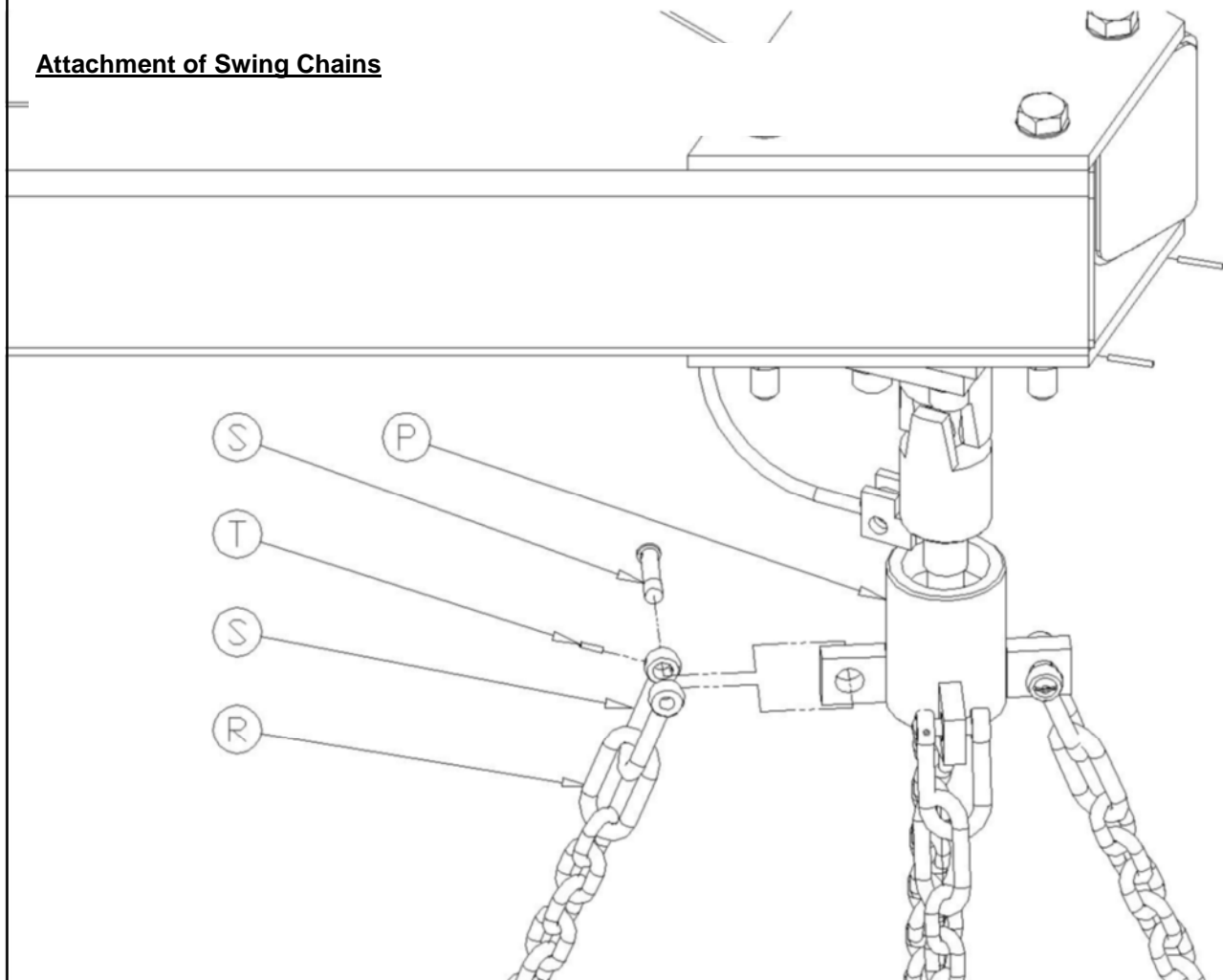
Universal Joint Fixing



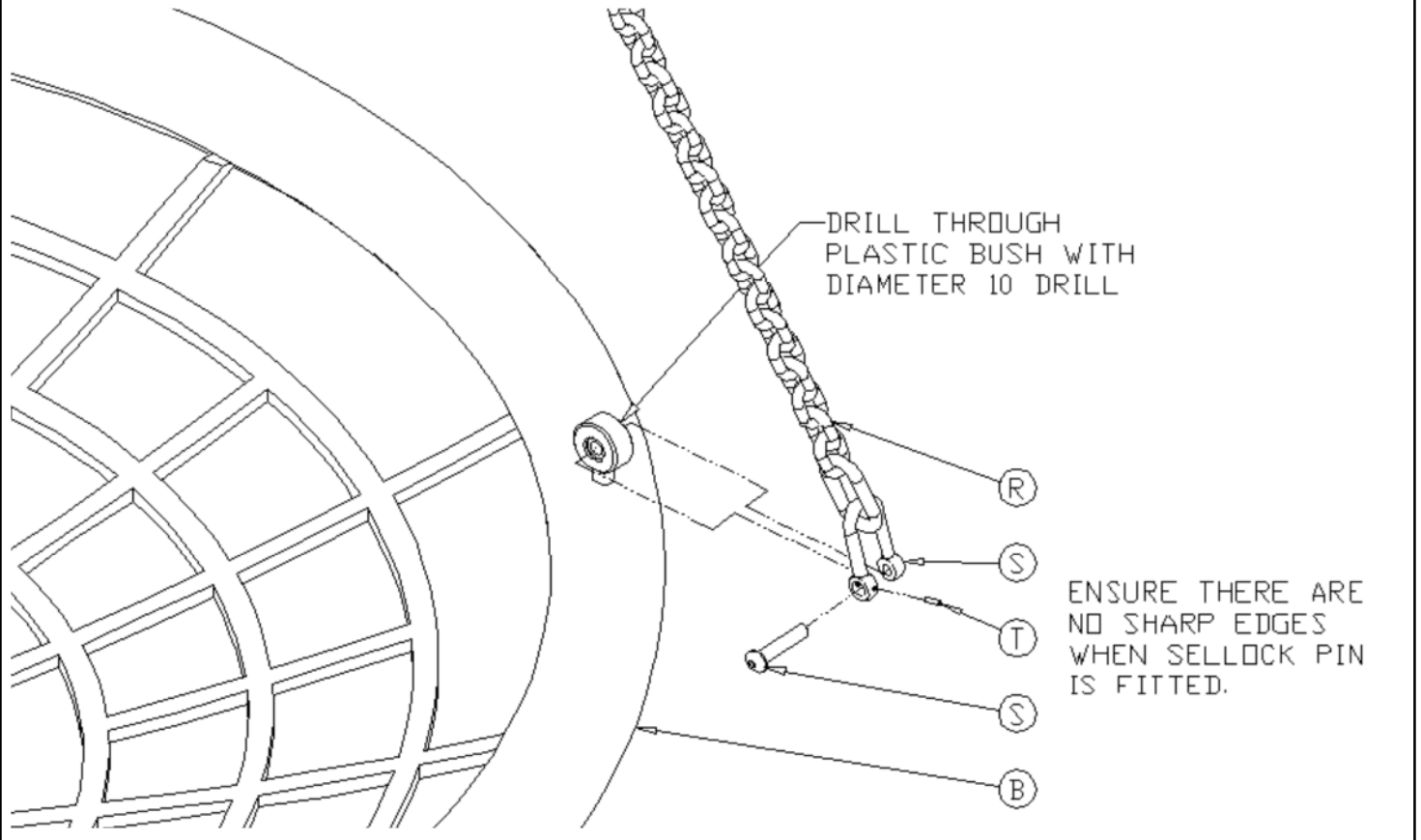
Pinning of M16 x 250 Bolts



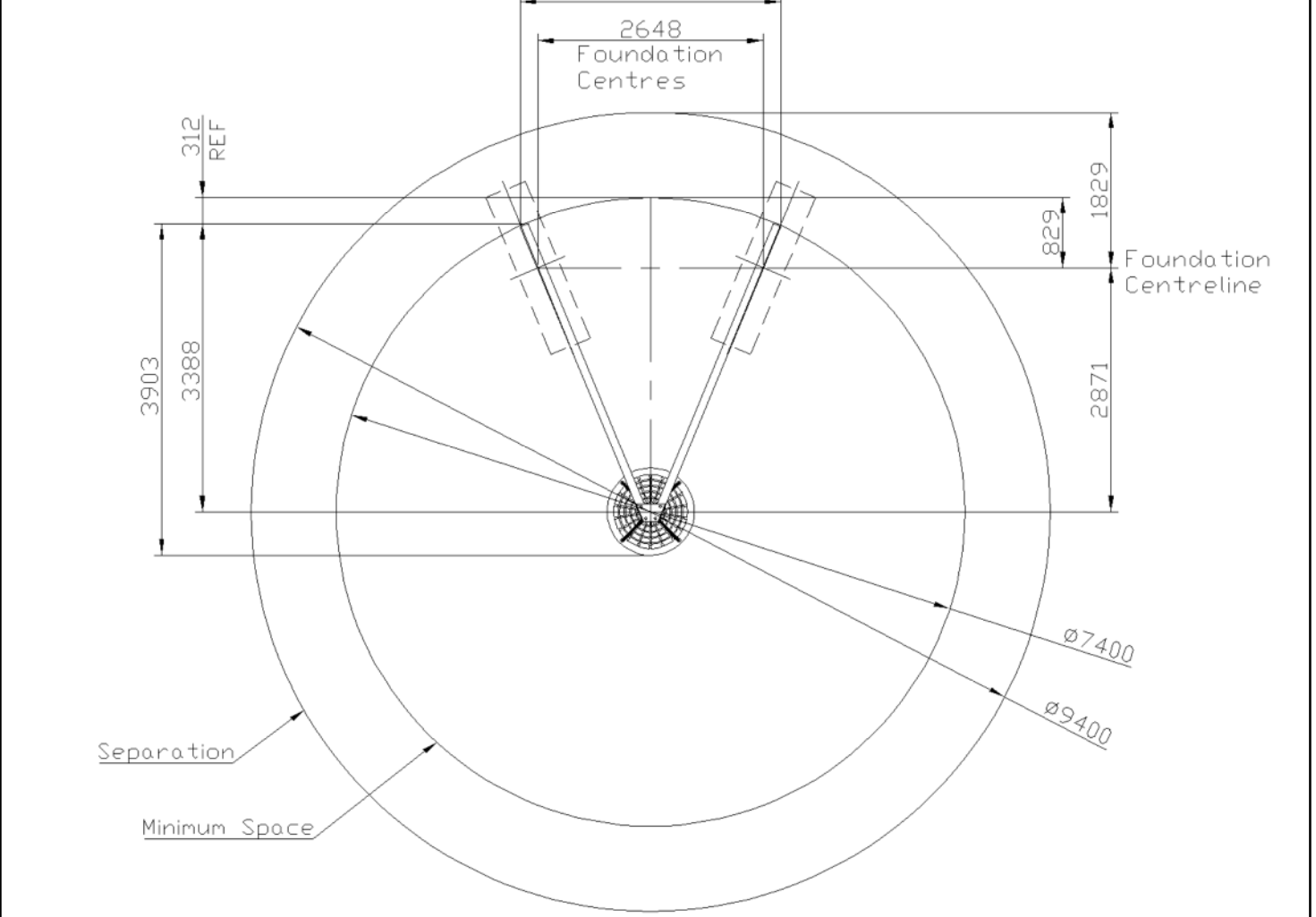
Attachment of Swing Chains



Attachment of Basket Seat



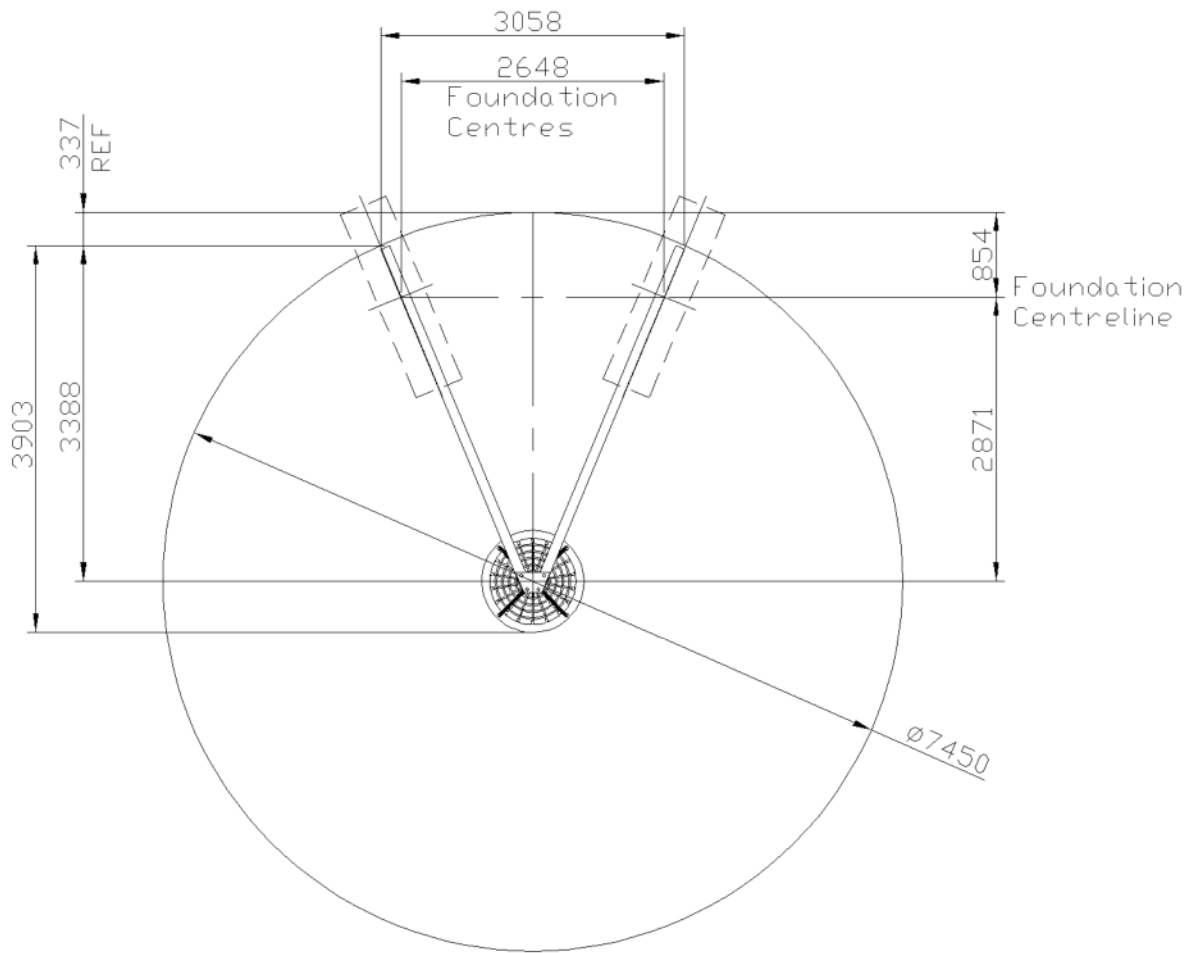
Minimum Space and Separation



Wetpour

44.0 Sq Metres
70mm Wetpour

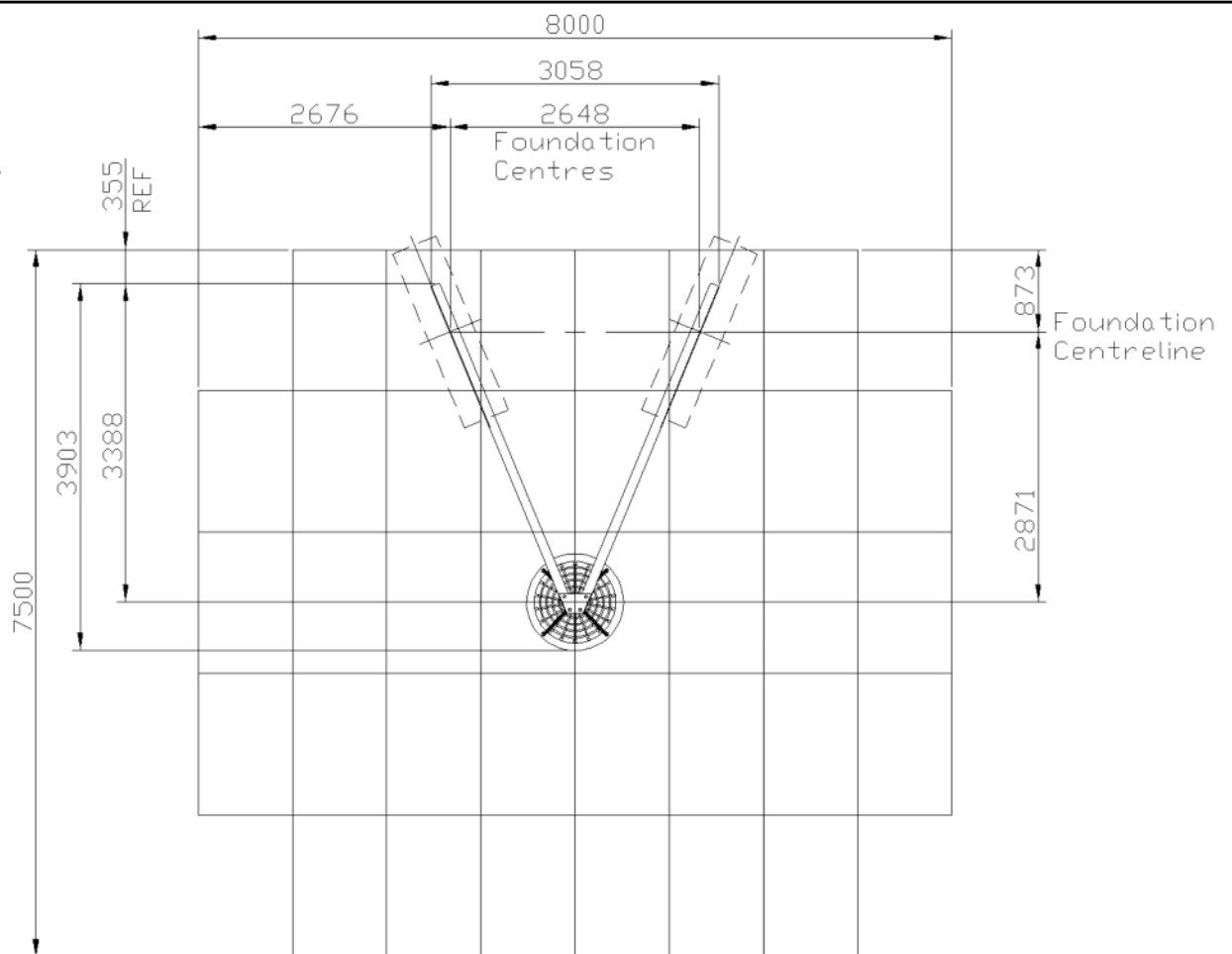
23.5 Linear
Metres Edging



Grass Mats

(1500 x
1000mm)

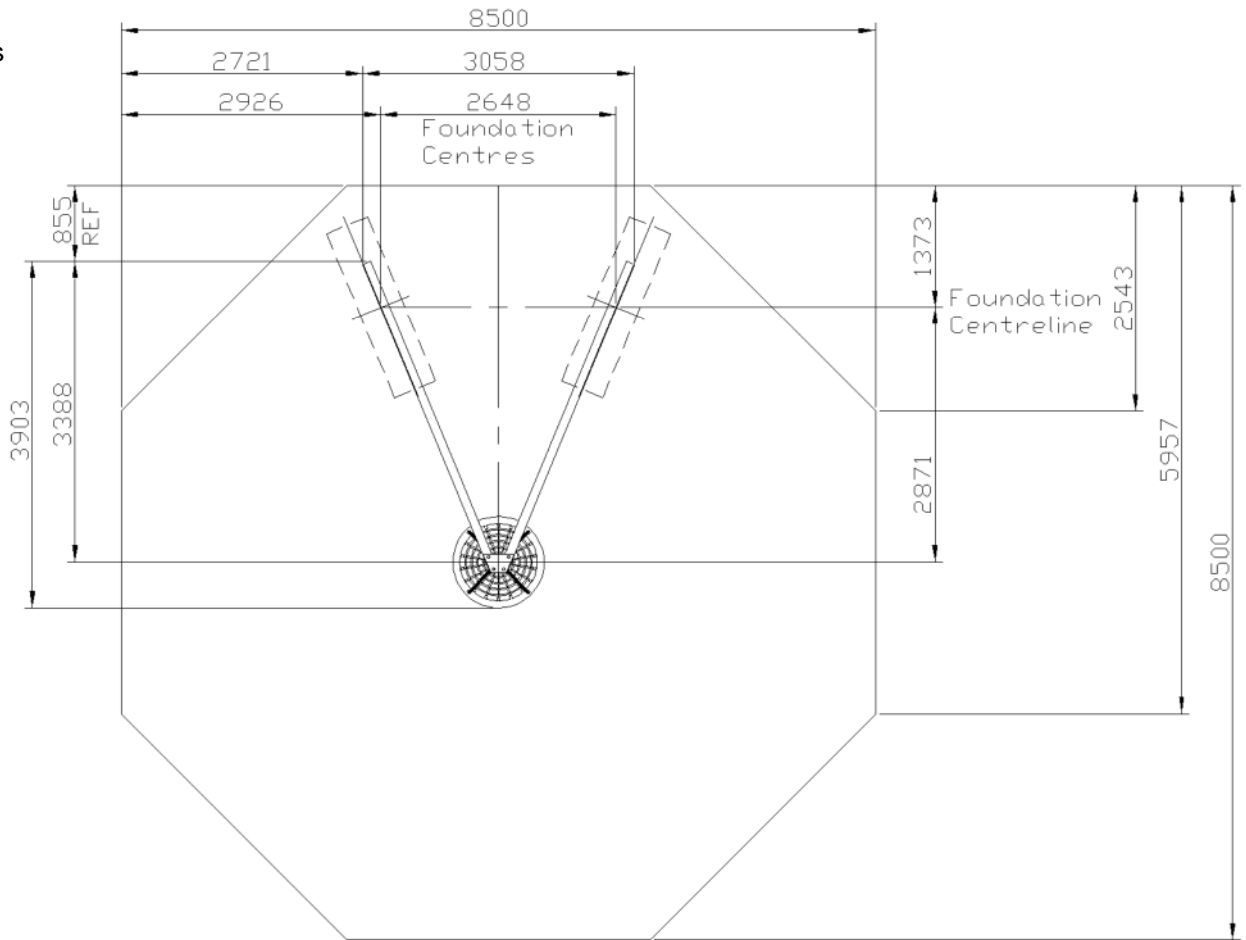
36 Grass Mats



Loose Fill

59.5 Sq Metres

28.0 Linear
Metres Edging



Note:

1. Ensure all installation aids are removed before first use.
2. For maintenance instructions see separate sheet.
3. All spare parts are available from Wicksteed Leisure.
4. All protruding screw threads and pins to be peened over to remove sharp edges.
5. Lifting aids will be required when installing this piece of equipment.
6. Due to weight and size of components in some instances, paintwork may need to be touched up on site before first use.

Note:

Wicksteed Leisure Ltd. recommend that the universal joint/bearing assembly should be checked regularly by lifting the tyre seat to take the weight and rotating the bearing housing, noting any rough movement vertically and horizontally, if any inconsistencies are found the assembly should be replaced immediately.

The universal joint/bearing assembly should be replaced every 5 years.

REF	QTY	DESCRIPTION	PART No
A	2	Pendulum Swing Beam Assembly	5083-017
B	1	Dia. 950 Basket Seat for Pendulum Swing	5084-020
C	2	Beam Support Leg	3092-045
D	1	Pendulum Swing Beam Fixing Plate – Top	3200-518
E	1	Pendulum Swing Beam Fixing Plate – Bottom	4064-011
F	4	M16 x 250 Lg High Tensile Bolt	2185-101
G	4	M16 x 40 Lg Hex Head Bolt	2185-092
H	4	M16 x 40 Socket Cap Head Screw c/w Pin	2171-078
J	8	M16 Single Coil Washer	2212-001
K	12	M16 Washer	2215-511
L	4	M16 Castle Nut	2193-058
M	4	1/8" x 7/8" Sellock Pin	2223-009
N	1	Support Strut	4200-881
P	1	Universal Joint and Bearing Assembly	4201-199
R	4	Chain Assembly	4061-091
S	8	Shackle & Pin	3621-002
T	8	Spirol Pin 1/8" x 5/8"	2223-023
U	3	Dark Blue Paint – 1 Litre	2820-007
V	4	M16 Nut Cover	2613-017

COMPILED BY: S. Bailey	APPROVED BY:	REV	0	1	2	3	4	5	6	7
		ECN	1497	minor	minor	Minor	Minor	1535	minor	minor
DATE: 22/08/05	DATE:	SIG.	SB	PG	SB	TW	TW	PG	TW	TW
		DATE.	14/09/05	6/10/06	17/01/07	20/04/07	04/05/07	24/7/07	25/03/08	15/04/08
		REV	8	9	10	11	12	13	14	15
		ECN	minor	minor	minor	minor	minor	minor	Minor	Minor
		SIG.	SB	TE	TE	MC	TE	PG	MC	MC
		DATE	01/04/09	19/05/09	26/05/09	23/03/10	16/06/10	10/5/12	18/01/16	22/11/18

