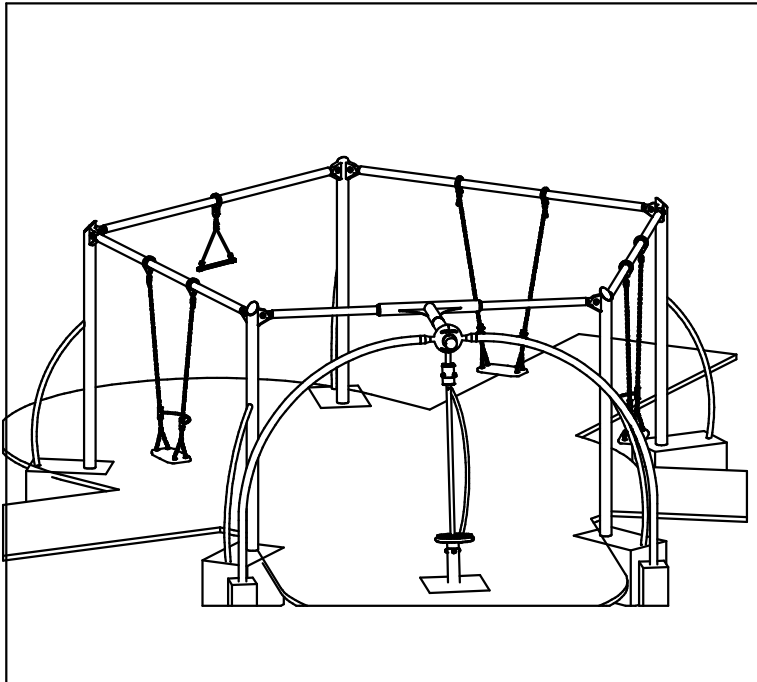


Swings

5 Point Swing
(3 Flat, 1 Trapeze, 1 Spinner)

PROD. CODE	6040-095
SIZE	5800 x 7000 x 2530h
AGE RANGE	5 to 16
F/ FALL HEIGHT	1435mm
HEAVIEST PART	59 Kg Approx
TOTAL WEIGHT	560 Kg Approx



SPECIFICATION

Solid steel components to BS 970 Pt 1
Steel Nominal Bore Tube (medium) to BS 1387
Aluminium extrusion made from 6063A T6
Standard fixings are plated and made to either BS 3692 or BS 4190
Non-standard fixings are anti-vandal and corrosion resistant

Welds are from copper-free wire to BS EN 440
Low lead polyester powder paint to BS 71 Pt 3
Anodising to BS 3987
Flat rubber seatshave an aluminium insert bonded to a synthetic rubber (EPDM) honeycomb construction
Bearings are made from grade T100G Tufcot

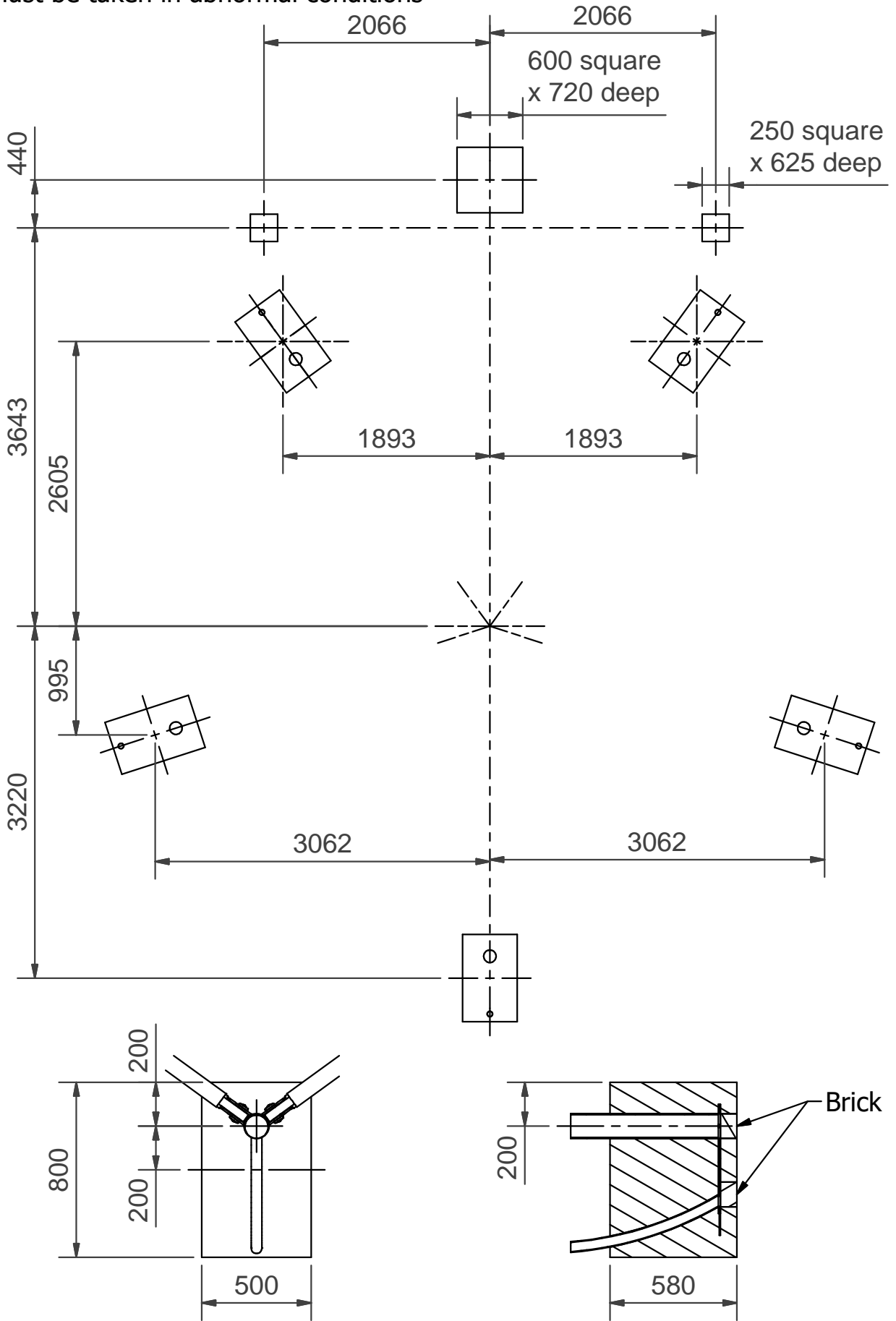
INSTALLATION INSTRUCTIONS

- 1 Read instructions thoroughly before commencing installation of unit
- 2 Excavate foundations as shown in the foundation plan
- 3 Position 2 uprights on bricks in adjacent foundation holes
- 4 Fit top bar as shown using tool provided. Ensure top bar is level and at the correct height. Do not tighten fixings
- 5 Position another upright in the next foundation hole. Fit top bar as previously. Proceed around unit until all top bars are in position. **Ensure top bar for Action Spinner is supported.**
- 6 Check all uprights are vertical and all top bars are horizontal and at the correct height. Tighten fixings.
- 7 Assemble the Action Spinner as shown to the bearing assembly and ground fixing.
- 8 Position in foundation on a brick and attach to the top bar.
- 9 Assemble the support posts to the clamp halves as shown. Place the support posts in foundations on bricks and assemble together to top bar.
- 10 Backfill foundations with approx 1.1m³ concrete (4 parts gravel/2 parts sand/1 part cement)
- 11 Allow concrete to set for 48 hours
- 12 Check all fixings are tight.
- 13 Attach chains to rotating swing bearings as shown.

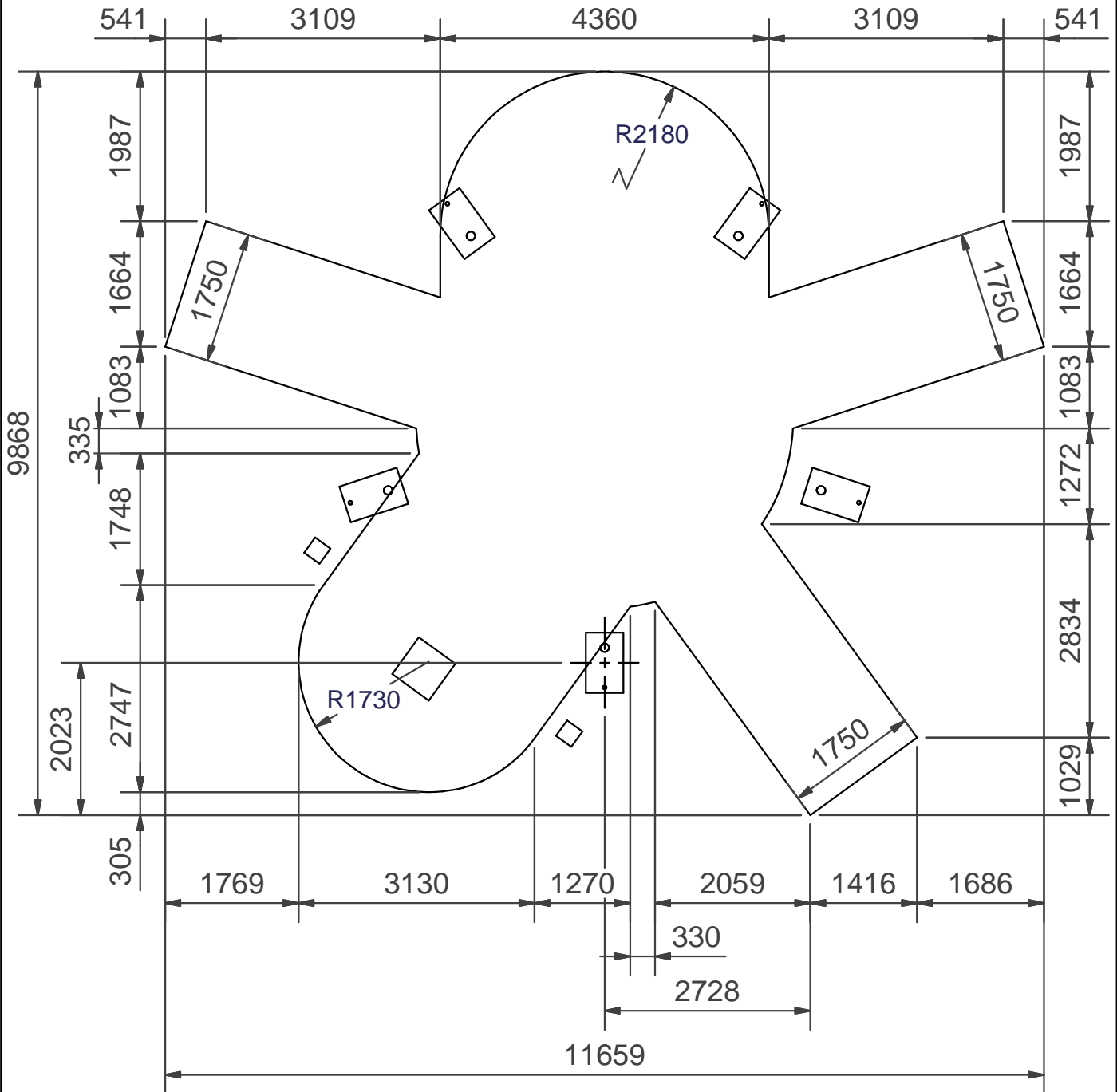
Note ENSURE ALL INSTALLATION AIDS ARE REMOVED BEFORE FIRST USE!

Foundation details

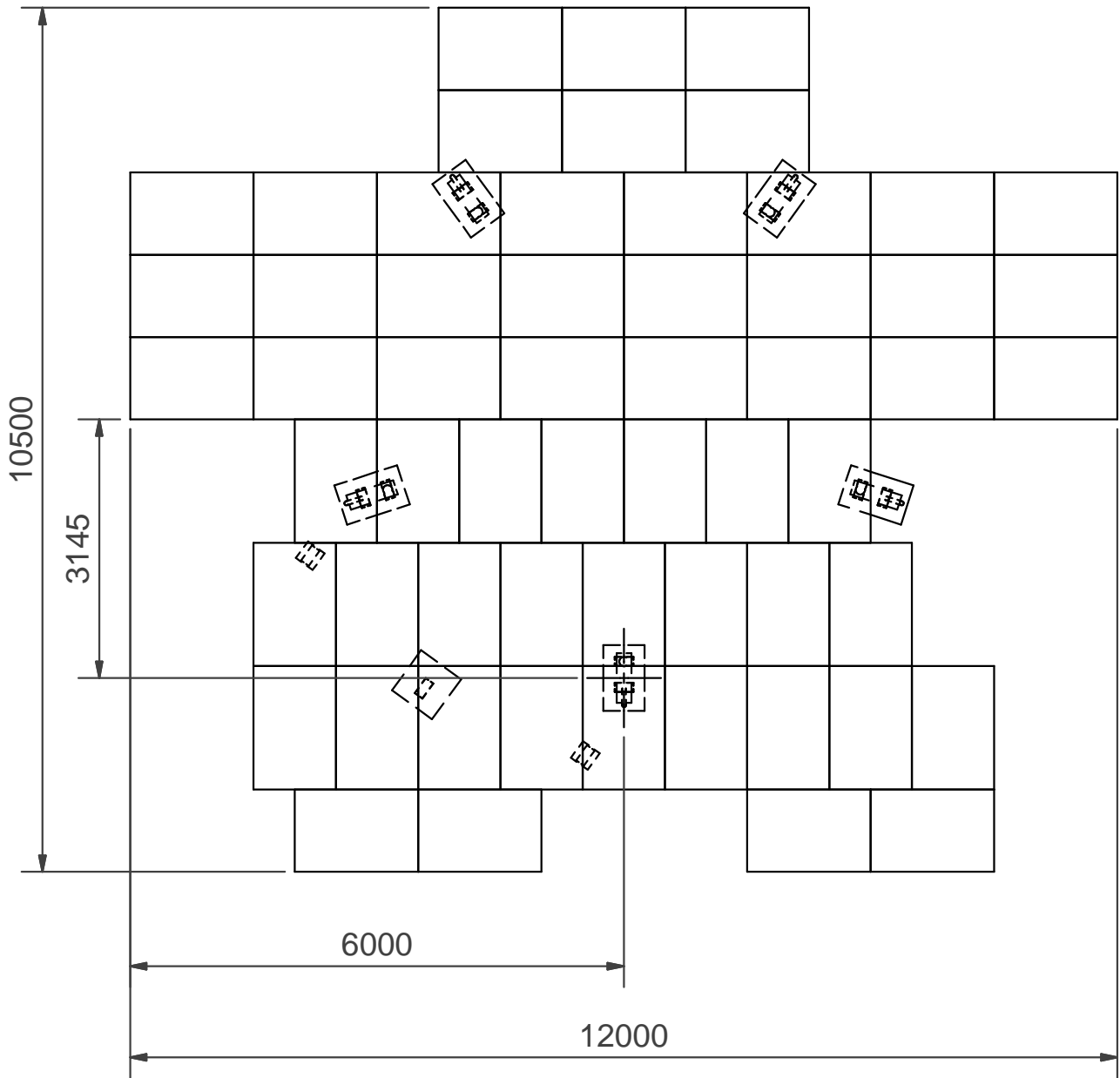
Care must be taken in abnormal conditions

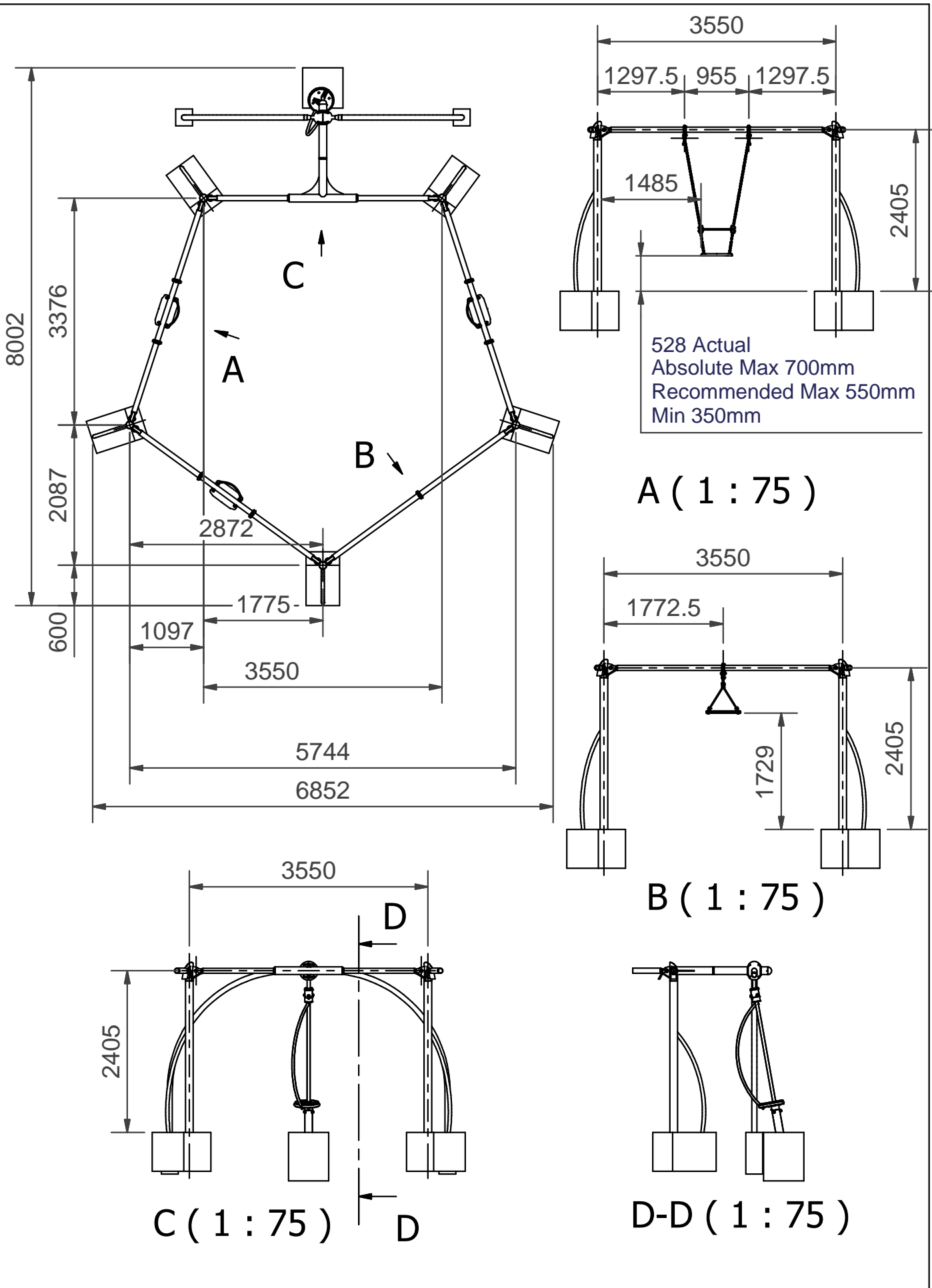


Safety Surfacing - Wetpour
 56.5m² 60mm thick wetpour
 45.5m of wetpour edging



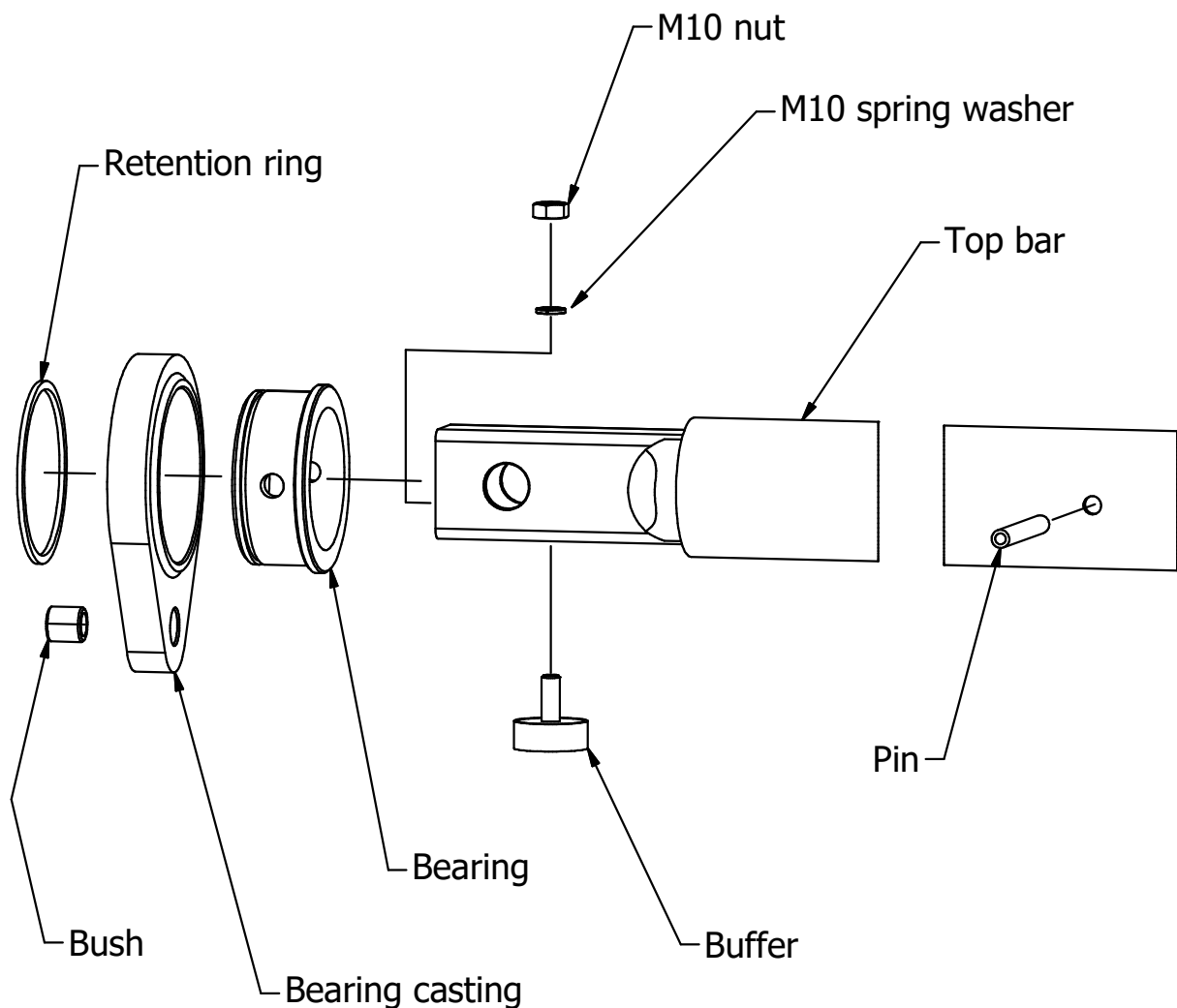
Safety Surfacing - Grass Mats
58 Wicksteed grass mats





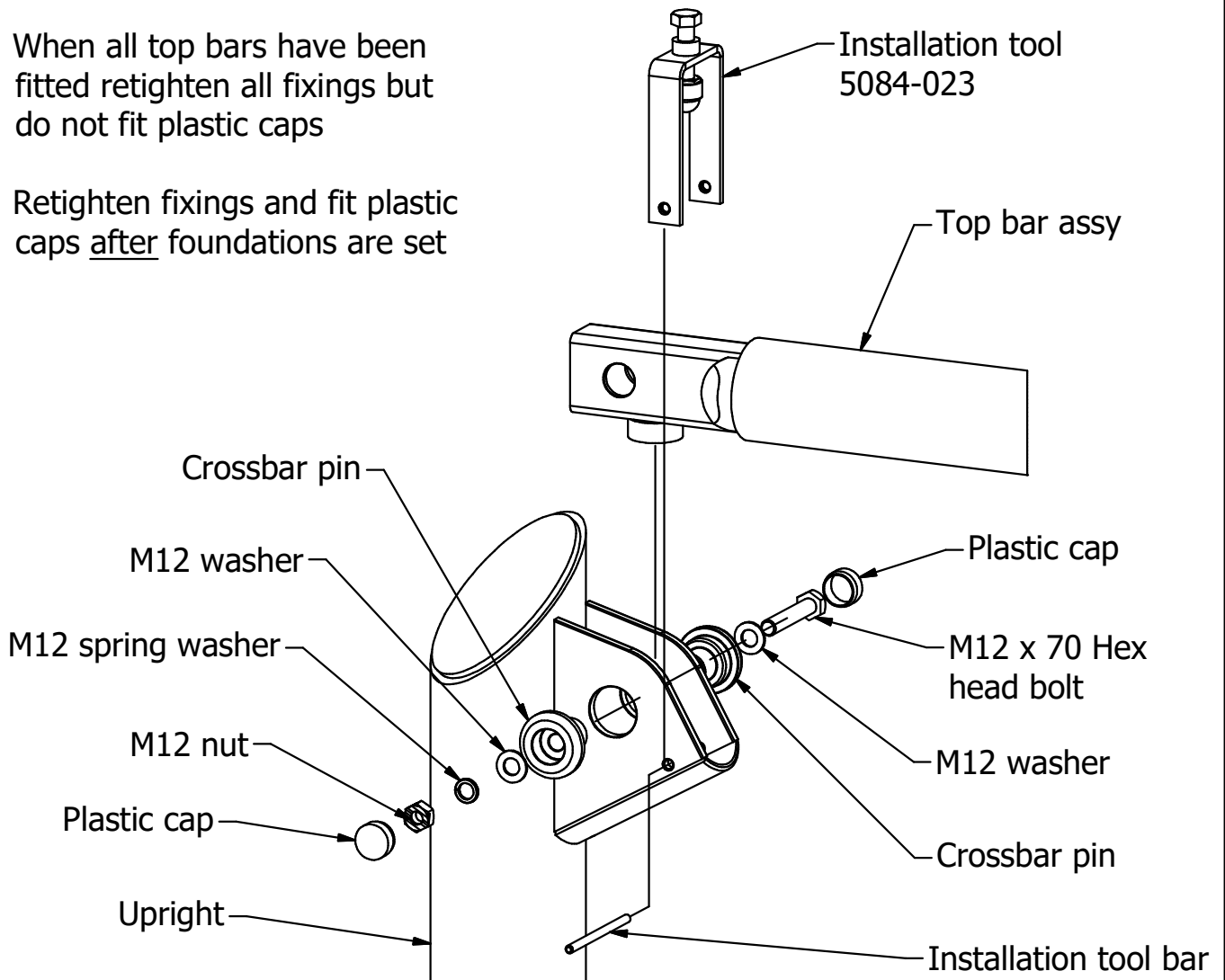
Top bar assembly details

- 1 Split bearing and slide over top bar, ensuring flange on bearing is towards the centre of the top bar
- 2 Fit pin thro' bearing and top bar, ensuring no part of the pin sits proud of the bearing surface
- 3 Locate bush into the swing bearing casting
- 4 Locate bearing casting onto bearing, lubricating the bearing with a general lubricating grease
- 5 Secure bearing casting with retention ring
- 6 Fit buffer into hole and secure with spring washer and nut



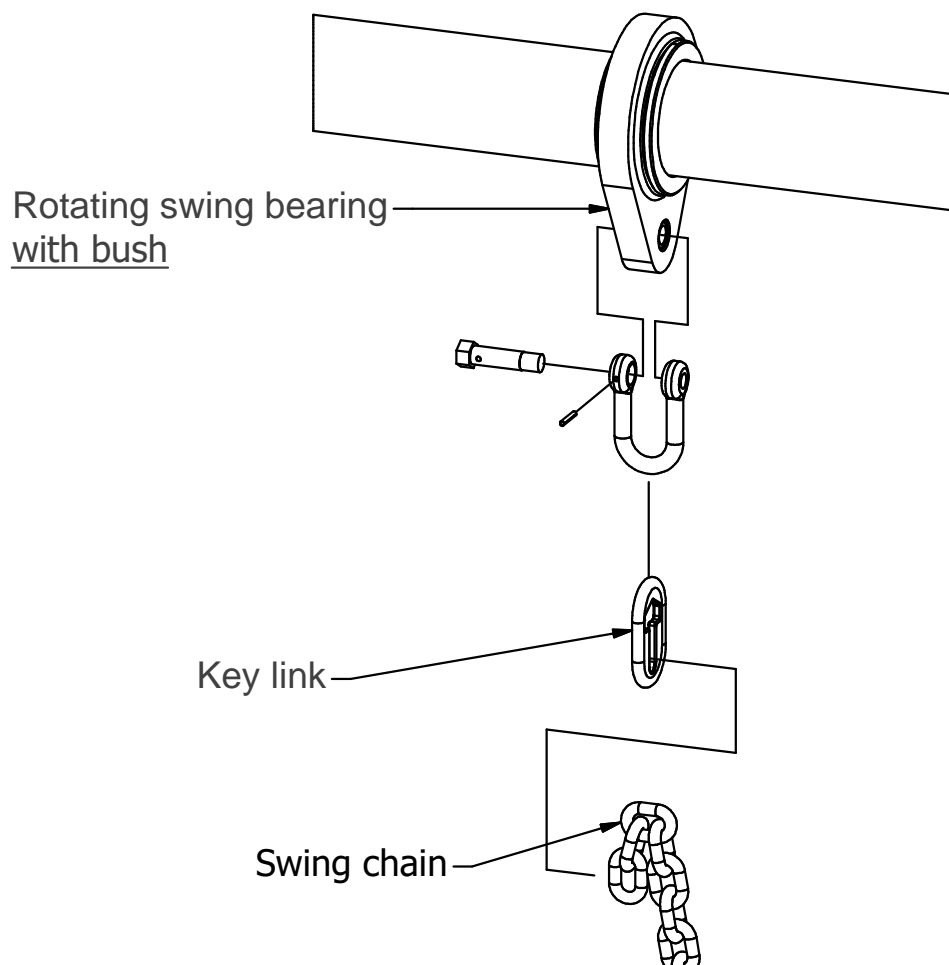
Top bar and Upright assembly

- 1 Position two uprights on bricks in their excavated holes, ensuring they are square, vertical and in the correct orientation
- 2 Raise the top bar assy and position it in the brackets on the uprights
- 3 Remove the tool bar from the installation tool. Position the tool over the top bar such that the small holes in the tool line up with the small holes in the upright bracket and replace the tool bar
- 4 Turning the M12 screw in the installation tool will compress the rubber foot and bring the larger holes in the upright bracket and top bar in line
- 5 Insert the crossbar pins and fit the M12 screw, washers and nut. Do not fully tighten
- 6 Repeat at the opposite end of the cross bar
- 7 When all top bars have been fitted retighten all fixings but do not fit plastic caps
- 8 Retighten fixings and fit plastic caps after foundations are set



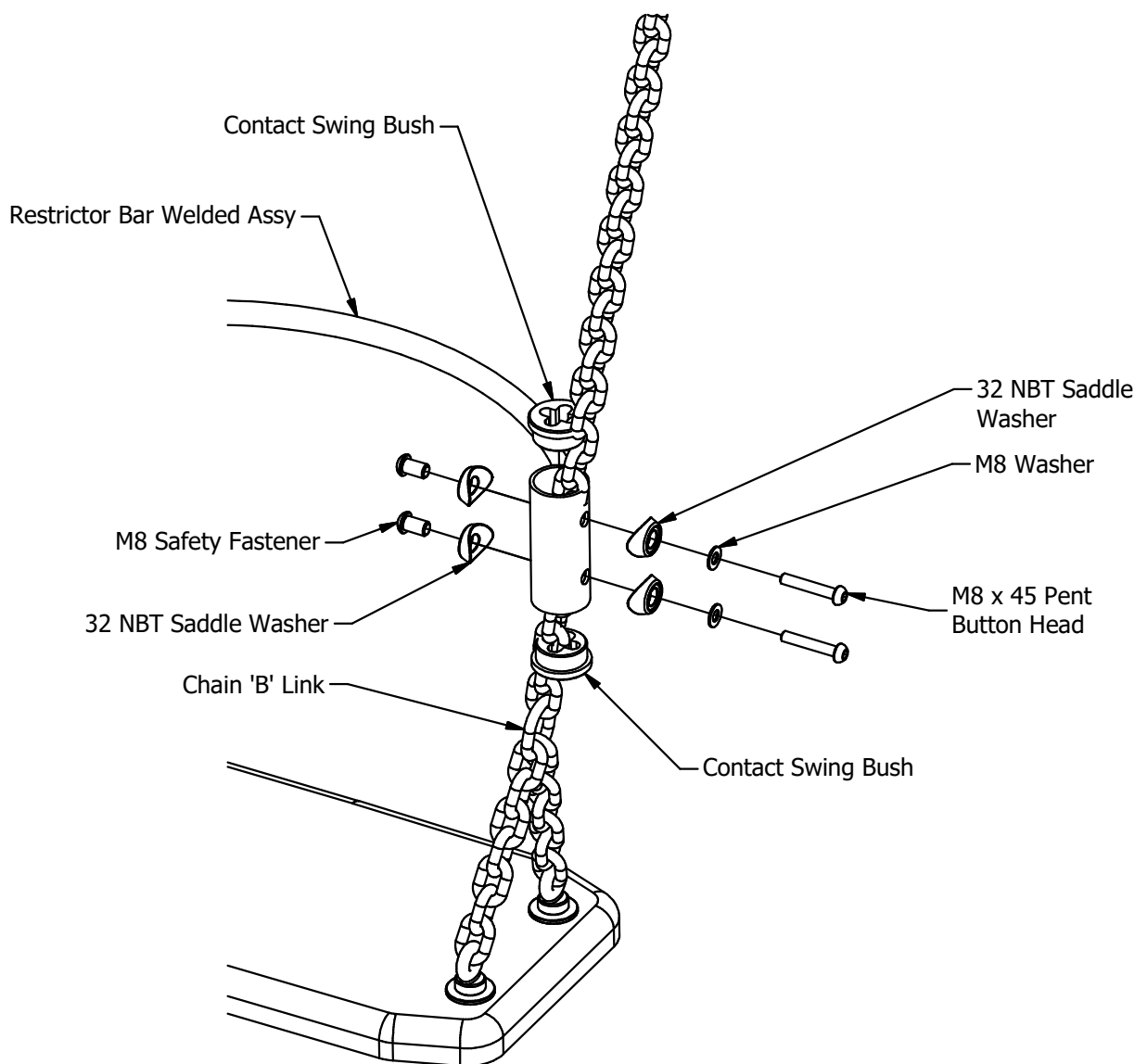
Chain to top bar assembly detail

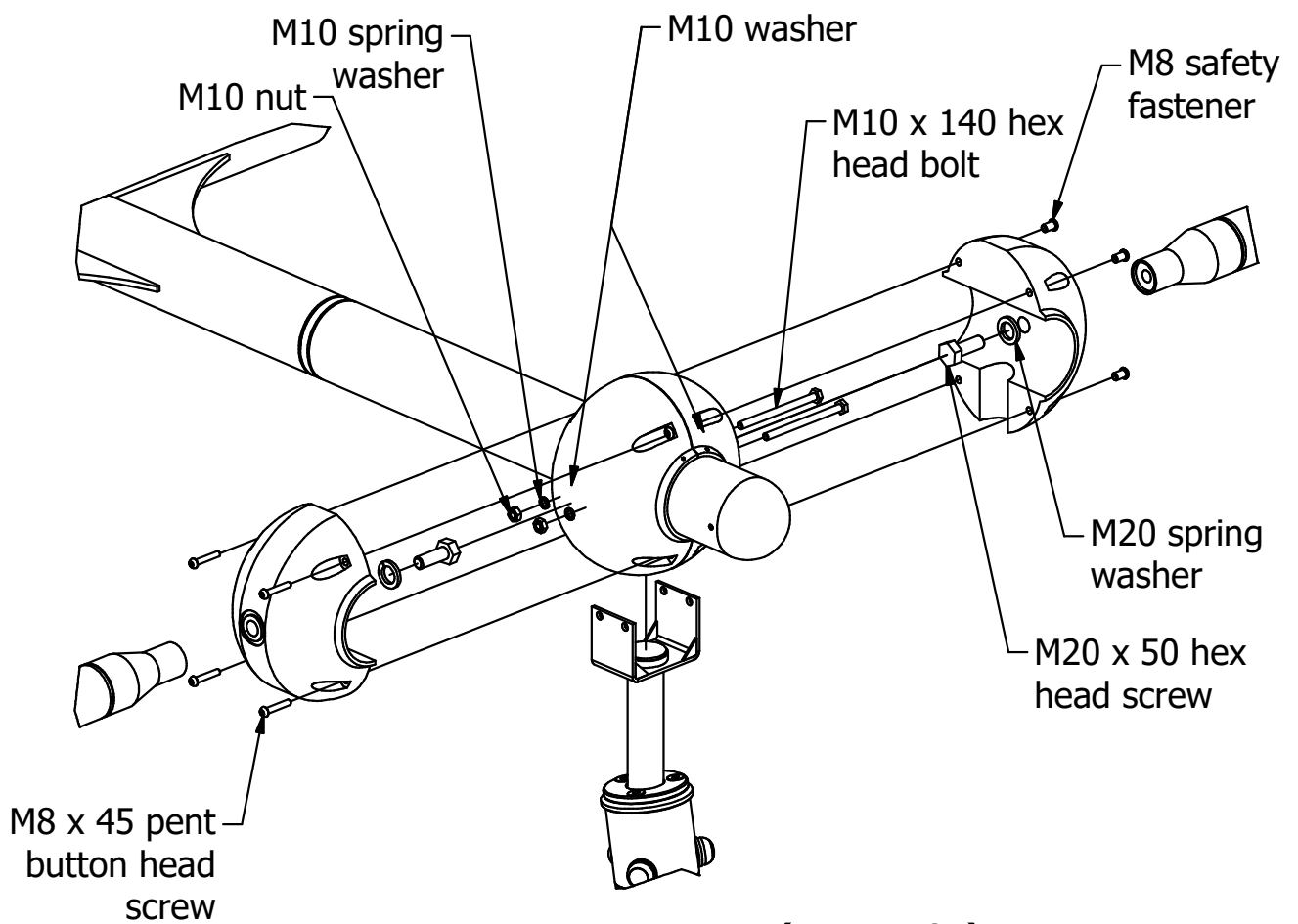
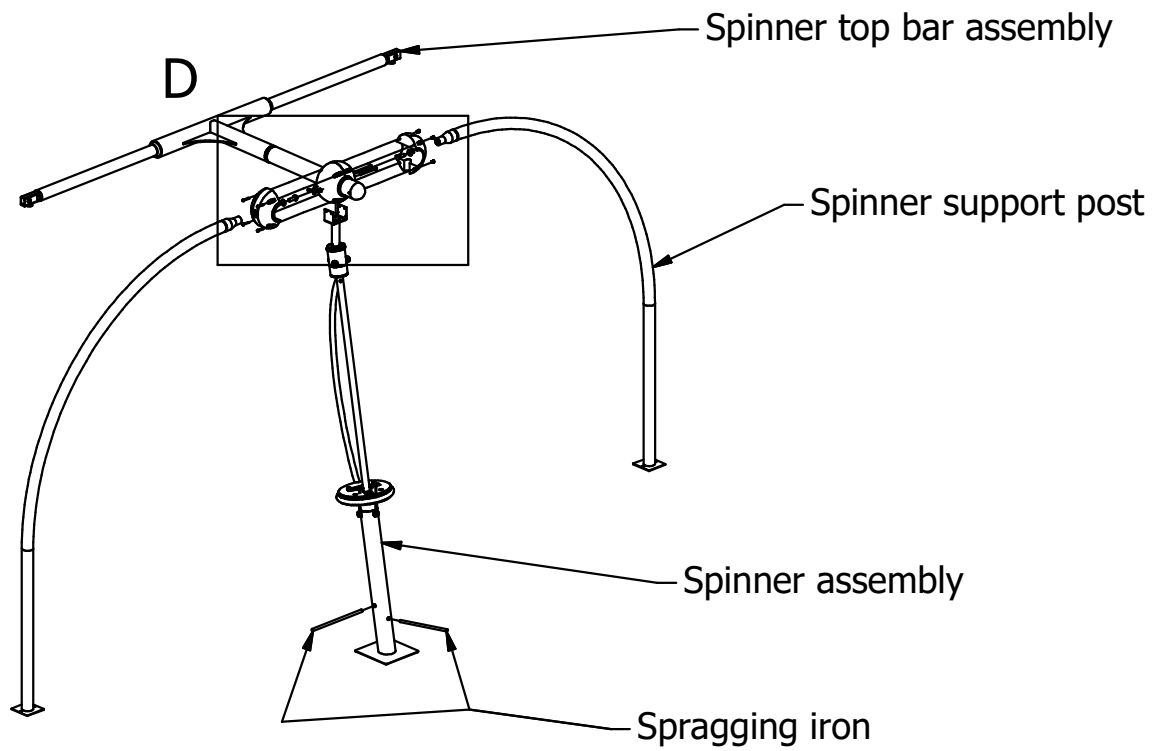
- 1 Pass the end of the chain thro' the key link to achieve the correct seat height, ensuring that 2 links only are passed fully through
- 2 Fit the shackle through the top of the key link.
- 3 Fit the shackle to the rotating swing bearing, securing with the sellok pin



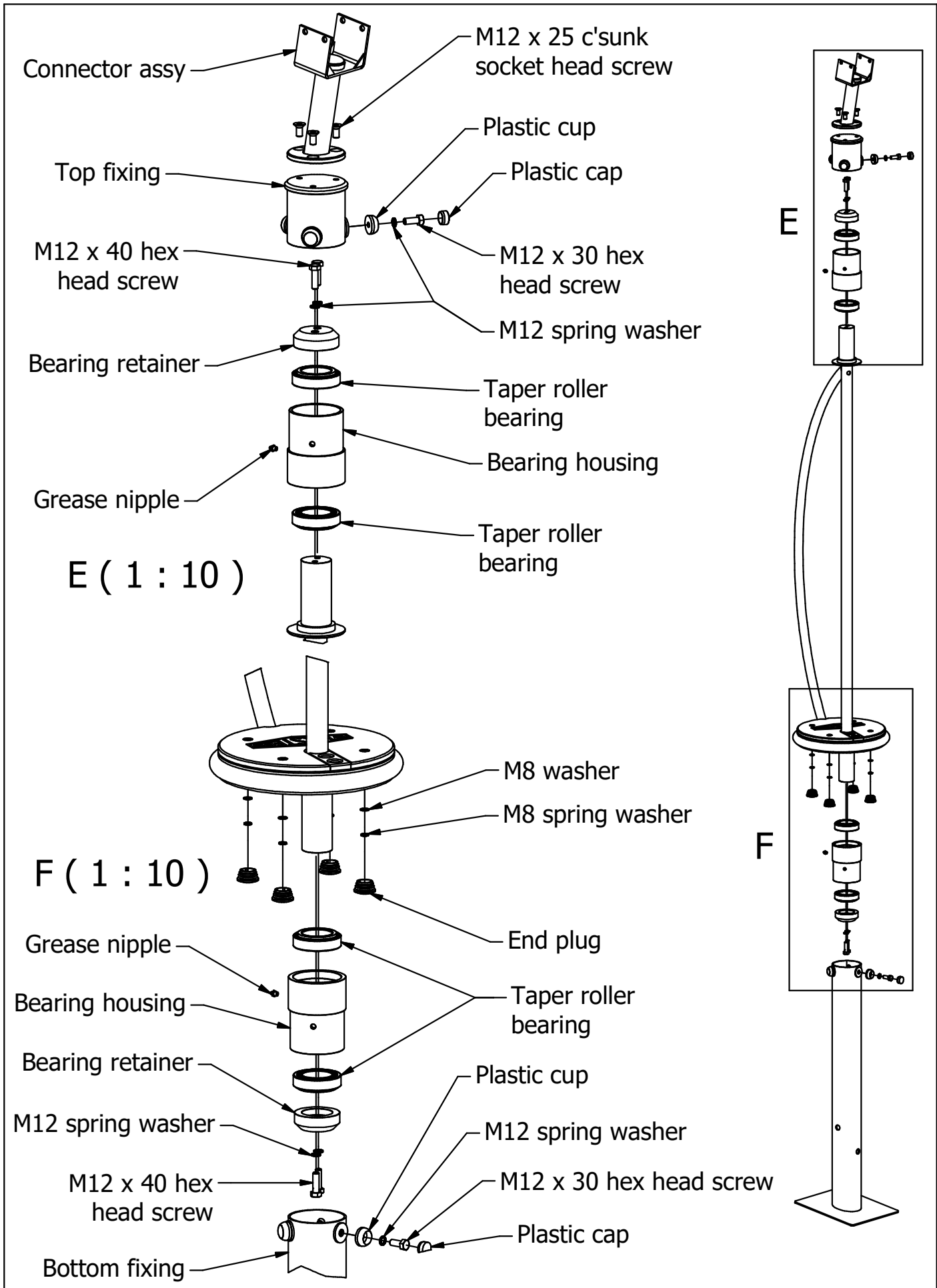
Seat restrictor assembly detail

- 1 Slide the chain through the restrictor bar welded assy with a contact swing bush on each end ensuring that the loop side faces in towards the middle of the swing assembly
- 2 Align the lower fixing hole with the sixth link up from the "B" link in the chain
- 3 Fix the welded assy to the chain by loosely fitting all fittings as shown below
- 4 Once all fittings are in place tighten all pent button screws and safety fasteners





D (1 : 10)



PARTS LIST

ITEM	QTY	PART NUMBER	DESCRIPTION
1.1	1	4201-910	Bottom Fixing W.A
1.2	1	4201-899	Spinner Assembly
1.2.2	1	4201-900	Spinner W.A.
1.2.3	2	3030-345	Bearing Retainer
1.2.4	2	3030-344	Bearing Housing
1.2.5	2	2692-003	5/16 BSW GREASE NIPPLE
1.2.6	4	2611-005	END PLUG (1¼ NB)
1.2.7	4	2546-013	Taper Roller Bearing 33012_Q
1.2.8	4	2215-507	M8 Washer
1.2.9	4	2212-204	M12 Spring Washer
1.2.10	4	2212-202	M8 Spring Washer
1.2.12	4	2175-137	M12 x 40 LG HEX HD SCREW
1.2.13	1	3755-646	Speedo Tread Board
1.2.14	4	2191-009	M8 Binx Nut
1.2.15	4	2176-228	M8 x 30 LG PENT C'SK SCREW
1.3	1	4201-898	Top Fixing W.A.
1.4	1	4201-891	Connector Assembly
1.5	2	3030-009	SPRAGGING IRON
1.6	6	2611-032_Cup	Blue PoeppeImann Cup
1.7	6	2611-032_Cap	Blue PoeppeImann Cap
1.8	4	2215-508	M10 Washer
1.9	6	2212-204	M12 Spring Washer
1.10	2	2212-203	M10 Spring Washer
1.11	2	2193-006	M10 Nut
1.12	2	2185-049	M10x140 Hex Head Bolt
1.13	6	2175-135	M12 x 30 LG HEX HD SCREW
1.14	3	2171-215	M12 x 25 C'SK SKT HD SCREW
1.15	4	2177-001	M8 Safety Fastener
1.16	2	3711-071	BALL CLAMP (SPINNER)
1.17	4	2176-155	M8 x 45 Pent Button Head
1.18	8	2223-026	DIA 6 x 50 LG SELLOK PIN BZP
2	3	5084-029	Seat Restrictor
2.1	1	4201-653	Restrictor Bar Welded Assy
2.2	4	3755-454	Contact Swing Bush
2.3	8	3711-051	32 NBT SADDLE WASHER
2.4	4	3033-138	M8 x 45 Modified Pent Btnn Head
2.5	4	2215-507	M8 Washer
2.6	4	2177-001	M8 Safety Fastener

PARTS LIST

ITEM	QTY	PART NUMBER	DESCRIPTION
3	5	5083-020	SWING 2 WAY LEG
4	3	5082-308	FLAT SEAT WITH AL-C-S
5	1	5081-047	TOP BAR ASSEMBLY
5.1	1	5084-024	Trapeze Swing Bar Assembly
5.2	1	4201-544	TOP BAR FABRICATION
5.3	1	3746-006	SWING BEARING
5.4	1	3712-174	SWING BEARING CASTING
5.5	1	3200-879	TAB WASHER - M10
5.6	1	3030-258	PIVOT BOLT
5.7	2	2550-003	BUFFER 4015/OEOM10
5.8	1	2511-010	OILITE BUSH CT10
5.9	1	2441-004	SPIROL RETENTION RING
5.10	1	2221-044	SELOC PIN M10 x 90mm
5.11	2	2215-515	M12 EXTRA LARGE PLAIN WASHER
5.12	2	2212-203	M10 Spring Washer
5.13	2	2193-006	M10 Nut
5.14	1	2192-006	M10 Nyloc Nut
6	3	5081-042	TOP BAR ASSY
6.1	1	4201-522	TOP BAR FABRICATION
6.2	2	3746-006	SWING BEARING
6.3	2	3712-174	SWING BEARING CASTING
6.4	2	2550-003	BUFFER 4015/OEOM10
6.5	2	2511-010	OILITE BUSH CT10
6.6	2	2441-004	SPIROL RETENTION RING
6.7	2	2221-044	SELOC PIN M10 x 90mm
6.8	2	2212-203	M10 Spring Washer
6.9	2	2193-006	M10 Nut
7	2	4201-938	Spinner Upright Support Post Assy
8	1	4201-937	TOP BAR ASSY
8.1	1	4201-935	TOP BAR FABRICATION
8.2	1	3711-066	Dia. 114mm Aluminium End Cap
8.3	2	2550-003	BUFFER 4015/OEOM10
8.4	2	2212-203	M10 Spring Washer
8.5	2	2193-006	M10 Nut
8.6	2	2171-110	M8x8 Grub Screw

PARTS LIST

ITEM	QTY	PART NUMBER	DESCRIPTION
9	6	4064-007	Swing Shackle Assembly c/w Sellok Pin
10	2	3711-067	Large Ball Clamp (Modified)
11	6	3710-001	KEY LINK
12	20	3030-257	CROSSBAR PIN
13	20	2611-032_Cap	Blue Poeppelmann Cap
14	20	2215-509	M12 Plain Washer
15	2	2212-207	24mm SPRING WASHER
16	10	2212-204	M12 Spring Washer
17	10	2191-011	M12 Binx Nut
18	2	2185-571	M20 x 50mm Hex HD
19	10	2185-074	M12 x 70 HEX HD BOLT
20	4	2177-001	M8 Safety Fastener
21	4	2176-155	M8 x 45 Pent Button Head

COMPILED DB	REV	0	1	2	3	4	5	6		
	ECN	1678	minor	minor	minor	Minor	Minor	Minor		
DATE: 15/04/13	SIG.	DB	PG	MC	AB	DB	MC	MC		
	DATE:	15/04/13	20/6/14	09/10/14	24/03/15	01/07/15	28/11/18	05/08/19		

DESPATCH LIST

Sheet 1 of 2

Product: 6040-095 - 5 Point Swing (3 Flat, 1 Trapeze & 1 Spinner) Date of Issue: 15/04/13

Order No: Issue: A

Item	Unit Qty	Description	Part No.	Checked
Action Spinner:				
1	1	Bottom Fixing W.A. *	4201-910	
2	1	Spinner Assembly *	4201-899	
3	1	Tread Board Assy *	4201-902	
4	1	Speedo Tread Board *	3755-646	
5	1	Spinner W.A. *	4201-900	
6	2	Bearing Retainer *	3030-345	
7	2	Bearing Housing *	3030-344	
8	1	Top Fixing W.A. *	4201-898	
9	1	Connector Assembly *	4201-891	
10	2	Spragging Iron	3030-009	
Trapeze Top Bar Assembly:				
11	1	Swing Bearing *	3746-006	
12	1	Swing Bearing Casting *	3712-174	
13	1	Trapeze Swing Bar Assembly *	5084-024	
14	1	Top Bar Fabrication	4201-544	
Swing Top Bar Assembly:				
15	6	Swing Bearing *	3746-006	
16	6	Swing Bearing Casting *	3712-174	
17	3	Top Bar Fabrication	4201-522	
Items marked * to be fitted before despatch				

Total No. of Items

Picked By: Checked By:

COMPILED BY: DB	REV	0	1	2	3		
	ECN No.	1678	minor	minor	Minor		
DATE: 15/04/13	DATE	15/04/2013	09/10/2014	22/05/2015	01/07/2015		
	SIGN	DB	PG	PG	DB		

FIXINGS LIST

Product: 6040-095 - 5 Point Swing (3 Flat, 1 Trapeze & 1 Spinner) Date of Issue: 15/04/13

Order No: Issue: A

Item	Unit Qty	Description	Part No.	Checked
Seat Restrictor Bar:				
19	12	Contact Swing Bush *	3755-454	
20	24	32 NBT Saddle Washer *	3711-051	
21	12	M8 x 45mm Modified Pent Button Head *	3033-138	
22	12	M8 Washer *	2215-507	
23	12	M8 Safety Fastener *	2177-001	
Trapeze Swing Bar Assembly:				
24	1	Tab Washer M10 *	3200-879	
25	1	Pivot Bolt *	3030-258	
26	2	Buffer 4015/OEOM10 *	2550-003	
27	1	Oilite Bush CT10 *	2511-010	
28	1	Spirol Retention Ring *	2441-004	
29	1	Seloc Pin M10 x 90mm *	2441-004	
30	2	M12 Extra Large Plain Washer *	2215-515	
31	2	M10 Spring Washer *	2212-203	
32	2	M10 Nut *	2193-006	
33	1	M10 Nyloc Nut *	2192-006	
Swing Top Bar Assembly:				
34	6	Buffer 4015/OEOM10 *	2550-003	
35	6	Oilite Bush CT10 *	2511-010	
36	6	Spirol Retention Ring *	2441-004	
37	6	Seloc Pin M10 x 90mm *	2221-044	
Items marked * to be fitted before despatch				

Total No. of Items

Picked By: Checked By:

COMPILED BY: DB	REV	0	1	2			
	ECN No.	1678	minor	Minor			
DATE: 15/04/13	DATE	15/04/2013	20/06/2014	01/07/2015			
	SIGN	DB	PG	DB			

FIXINGS LIST

Product: 6040-095 - 5 Point Swing (3 Flat, 1 Trapeze & 1 Spinner) Date of Issue: 15/04/13

Order No: Issue: A

Item	Unit Qty	Description	Part No.	Checked
Seat Restrictor Bar (Cont):				
38	6	M10 Spring Washer *	2212-203	
39	6	M10 Nut *	2193-006	
Spinner Top Bar:				
40	2	Buffer 4015/OEOM10 *	2550-003	
41	2	M10 Spring Washer *	2212-203	
42	2	M10 Nut *	2193-006	
43	2	M8 x 8mm Grub Screw *	2171-110	
Other Items:				
44	6	Shackle Assy	4064-007	
45	2	Large Ball Clamp (Modified)	3711-067	
46	6	Key Link	3710-001	
47	20	Crossbar Pin	3030-257	
48	20	Blue Poepplemann Cap	2611-032_Cap	
49	20	M12 Plain Washer	2215-509	
50	2	24mm Spring Washer	2212-207	
51	10	M12 Spring Washer	2212-204	
52	10	M12 Binx Nut	2191-011	
53	2	M20 x 50mm Hex HD	2185-571	
54	10	M12 x 70mm Hex HD Bolt	2185-074	
55	4	M8 Safety Fastener	2177-001	
56	4	M8 x 45mm Pent Button Head	2176-155	
Items marked * to be fitted before despatch				

Total No. of Items

Picked By: Checked By:

COMPILED BY: DB	REV	0	1	2		
	ECN No.	1678	minor	Minor		
DATE: 15/04/13	DATE	15/04/2013	20/06/2014	01/07/2015		
	SIGN	DB	PG	DB		