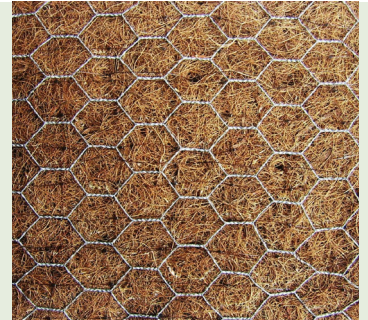


Greenfix Rockmat™ 6DPS Pre-seeded Steel Reinforced Erosion Control Blanket

Application and Benefits

Rockmat 6D combines the benefits of Greenfix Eromat™ with additional steel reinforcement for long term protection to vulnerable slopes. Rockmat 6D is made up of a 100% coir erosion control blanket stitched to a galvanised steel mesh. Due to the steel mesh Rockmat 6D also provides highly effective anti-vermin protection in areas where animals such as rabbits are likely to create slope instability due to burrowing. Rockmat 6D is supplied pre-seeded with one of Greenfix's six standard seed mixes. A wildflower mix can also be added to any of the standard mixes.



Product Characteristics

Fibre	Coir
Fibre Content	100%
Fibre Characteristics	Untreated Natural
Weight / Total g/m ² (+/- 10%)	800
Weight / Fibre g/m ² (+/- 10%)	450
Blanket Thickness	8-10mm
Functional Longevity	24-36 Months
Functional Longevity Wire Mesh	Approx. 12-15 years
Bottom Netting Type / Size / Weight	PP (Polypropylene) / 6 x 6mm / 4.8g/m ²
Inner Netting Type / Size / Weight	PP (Polypropylene) / 12 x 13mm / 7.1 g/m ²
Top Netting Type	Galvanised Steel Mesh
Stitching Thread	PP-thread (brown) UV Degradable
Stitching Thread Tensile Strength	6.5cN/dtex
Slope Recommendation	Up to 70°
Tensile Strength EN ISO 10319	89.5kg-force per 25cm
Wire Thickness DIN 1200	0.8mm
Wire Mesh Size	25 x 25mm / Hexagon
Weight	350g/m ²
Galvanised Coating	+/- 0.075mm
Break Resistance	350-500 N/mm ²
Width	1.2m
Length	25m
Area Per Roll	30m ²
Diameter Per Roll	0.36m
Volume Per Roll	0.16m ³

Greenfix Standard Seed Mixes

The following standard seed mixes are for use within Greenfix Pre-seeded Erosion Control Blankets. Please make Greenfix aware of the seed mix selection when placing an order. A Wildflower Seed Mix can be added to any of the below seed mixes upon request, please note this will incur an extra cost of £0.35m².

Please note clovers and legumes are added where poor soil conditions exist but should not be used in good quality soils as they can dominate. They fix Nitrogen into the soil to improve fertility, which is good for swales and ponds.

Wetland Seed Mix (1A)		
Rapid establishment and hard wearing, good for steep slopes and flood endangered areas. Excellent sod forming and erosion protection, strong root development, salt resistant.		
Mix %	English Name & Advantages	Latin Name
30%	Perennial ryegrass; Quick to establish, wear tolerant and regenerative	Lolium perenne
30%	Creeping red fescue; binds, drought and salt tolerant, good erosion protection	Festuca rubra rubra
30%	Chewings fescue; low maintenance, good for dry low nutrient soil, shade tolerant	Festuca commutata
10%	Smooth stalked meadow grass; binds soil, good wear and regenerative qualities	Poa pratensis

Standard Seed Mix (1C)		
As per 1A and with clover added for poor soils. Most widely used mix. Good for road embankments, swales and coastal applications.		
Mix %	English Name & Advantages	Latin Name
27%	Perennial ryegrass; Quick to establish, wear tolerant and regenerative	Lolium perenne
27%	Creeping red fescue; binds, drought and salt tolerant, good erosion protection	Festuca rubra rubra
27%	Chewings fescue; low maintenance, good for dry low nutrient soil, shade tolerant	Festuca commutata
12%	Smooth stalked meadow grass; binds soil, good wear and regenerative qualities	Poa pratensis
3%	Red Clover; dark pink flower, nitrogen fixing	Trifolium pratensis
2%	White clover, spreads rapidly in moist soil	Trifolium repens
1%	Birdsfoot trefoil; used in dry, sandy soils	Lotus corniculatus
1%	Yellow trefoil; thrives in dry conditions	Medicago lupulina

Low Maintenance Seed Mix (2A)		
Low maintenance, shade tolerant. Use in better quality soils. Strong root development and erosion protection. Salt resistant.		
Mix %	English Name & Advantages	Latin Name
35%	Creeping red fescue; binds, drought and salt tolerant, good erosion protection	Festuca rubra rubra
30%	Chewings fescue; low maintenance, good for dry low nutrient soil, shade tolerant	Festuca commutata
30%	Smooth stalked meadow grass; binds soil, good wear and regenerative qualities	Poa pratensis
5%	Brown top bent; cold tolerant, low maintenance, rhizomous, very dense growth	Agrostis tenuis

Dry and Stony Soil Seed Mix (2B)		
Dry stony soils, strong root development, erosion protection and salt resistant.		
Mix %	English Name & Advantages	Latin Name
25%	Creeping red fescue; binds, drought and salt tolerant, good erosion protection	Festuca rubra rubra
30%	Chewings fescue; low maintenance, good for dry low nutrient soil, shade tolerant	Festuca commutata
20%	Smooth stalked meadow grass; binds soil, good wear and regenerative qualities	Poa pratensis
5%	Brown top bent; cold tolerant, low maintenance, rhizomous, very dense growth	Agrostis tenuis
20%	Sheeps fescue; for poor soils, drought tolerant, densely tufted	Festuca ovina

Poor Soil Seed Mix (2C)		
Low maintenance, shade tolerant. Use in better quality soils. Strong root development and erosion protection. Salt resistant. Added clover for poor soil conditions.		
Mix %	English Name & Advantages	Latin Name
25%	Creeping red fescue; binds, drought and salt tolerant, good erosion protection	Festuca rubra rubra
25%	Chewings fescue; low maintenance, good for dry low nutrient soil, shade tolerant	Festuca commutata
10%	Smooth stalked meadow grass; binds soil, good wear and regenerative qualities	Poa pratensis
5%	Brown top bent; cold tolerant, low maintenance, rhizomous, very dense growth	Agrostis tenuis
28%	Sheeps fescue; for poor soils, drought tolerant, densely tufted	Festuca ovina

2C Seed Mix continued on following page

3%	Red Clover; dark pink flower, nitrogen fixing	Trifolium pratensis
2%	White clover, spreads rapidly in moist soil	Trifolium repens
1%	Birdsfoot trefoil; used in dry, sandy soils	Lotus corniculatus
1%	Yellow trefoil; thrives in dry conditions	Medicago lupulina

Pioneer		
For poor soils with establishment problems. 50 g/m ² Please note: this seed mix will incur an extra cost of £0.20m ² .		
Mix %	English Name & Advantages	Latin Name
25%	Perennial ryegrass; Quick to establish, wear tolerant and regenerative	Lolium perenne
25%	Creeping red fescue; binds, drought and salt tolerant, good erosion protection	Festuca rubra rubra
10%	Brown top bent; cold tolerant, low maintenance, rhizomous, very dense growth	Agrostis tenuis
15%	Sheeps fescue; for poor soils, drought tolerant, densely tufted	Festuca ovina
7%	Red Clover; dark pink flower, nitrogen fixing	Trifolium pratensis
7%	White clover, spreads rapidly in moist soil	Trifolium repens
2%	Birdsfoot trefoil; used in dry, sandy soils	Lotus corniculatus
3%	Yellow trefoil; thrives in dry conditions	Medicago lupulina
2%	Suckling clover (Irish Shamrock)	Trifolium dubium
4%	Alsike clover	Trifolium hybridum